

July 26, 1874, with the Revs. J. B. Mann and Wm. F. Talbot in charge. The name "Zion" was chosen to distinguish it from Union Sound Church east of Williamsville. The church was rebuilt in 1921. The schoolhouse, a short distance south of the church was purchased from the State B. of E. on Nov. 22, 1935. It was rebuilt for use as a church-house and was opened on July 1, 1939. Additional land for the cemetery was purchased on April 8, 1942, from Wilmer S. Evans.

**Roxana Pilgrim Holiness Church** was organized after two series of tent-meetings in a nearby grove. The church was built, in 1928, on a plot of land donated, on Nov. 24, 1928, by J. Frank Lynch, for that purpose only. In 1941, when the road in front of the church was widened, the State allowed them damages and moved the church across the road to a new site purchased on May 26, 1941, from Chas. E. Richards. A new wing, containing a Sunday School room and a new tower were added to the church. The Lynch land was returned to him on Aug. 5, 1941. The church was incorporated on June 30, 1942. A new parsonage was built in 1942.

**Christ's Sanctified Holy Church.** This church was incorporated on Aug. 1, 1896, with Chas. H. Lynch, Wm. S. Hickman, Joshua J. Stephens, Abisha D. Cooper and Chas. F. Hudson as trustees. They held their meetings in different member's homes for nine years. On Mar. 17, 1905, Orlando B. Lynch donated a church site on his farm at Long's Ridge. A frame church was then built and occupied. In 1944, the members decided to seek a new site for their activities. The church and lot then came into the possession of Dory Evans who rented the building out as a warehouse.

Christ's Church then held their meetings in a former schoolhouse at Bayard for about eight months. Late in March, 1945, they rented the former Omar M. E. Church from Louis F. Daisey and they are still meeting there.

**Salem Methodist Church (M.E.)** at Selbyville. A Methodist Society was organized, in 1789, in the home of David James Murray, on his farm, one and one-half miles n. e. of Selbyville. This was the birthplace, at a later date, of the Rev. W. L. S. Murray, D.D., prominent in Methodism. The farm is now owned and operated by Joshua L. Murray.

In the spring of 1790, a basket-meeting was held in the grove at Sandy Branch, opposite the present Red Men's Cemetery, at which time 28 persons were converted. A combined church and day-school was then built in the grove. The inside was unfinished, had a fireplace for heat, used light-wood for illumination at night services and the benches were made of slab wood with holes bored in them for inserting legs. The church was incorporated on Feb. 28, 1833. Fifty-two poles of land, were donated on Nov. 2, 1833, by Milburn Murray.

The second church was built in 1849 near Sandy Branch on the land of Zeno Long. He deeded the site for the church to the trustees on May 3, 1849. Tallow candles were used and some of the old ladies would light their pipes from the candles for a "drag" on the way home. There was a gallery for the negroes who would nearly raise the roof with their shouting. In the meantime, the town of Selbyville had sprung up and, in 1883, a third church was built in town. The old church was sold to Mr. Long who used it as a barn. It was in use until about 1935 when it was burned.

In the new church chandeliers holding oil lamps were used. Land was purchased, on May 5, 1886, from Wm. R. McCabe and on June 19, 1895, from

(Zabry's Churches of Delaware - 1948)

Wm. S. McCabe. In 1912, this building was moved to the opposite end of the lot and used as a school for the younger grades. Title to the half-acre former public school plot adjoining the church property was secured on Feb. 5, 1915. The old church which had been moved to this plot was destroyed by fire in October, 1922. The present stone church was built in 1911. It was dedicated by Bishop Hamilton and Dr. Krantz on Sun., July 14, 1912. A new parsonage was completed at the same time. A reopening service was held in 1934. Four young men have gone out from Salem to become ministers.

Selbyville M. P. Church was the outgrowth of tent-meetings started in the fall of 1909. A church site was purchased on Mar. 10, 1910, from Jacob M. Holloway. Meetings were continued in the tent until 1911 when a large church was built on Duke St. This church was destroyed by fire on Sun. evening, Jan. 28, 1923 and it was not replaced.

Selbyville P. E. Mission. In June, 1946, a group of Episcopalians in Selbyville started to hold regular meetings in Pomeroy's Log Cabin with the intention of establishing an Episcopal Mission and building a house of worship.

Zoar M. E. Church, colored, is located on the outskirts of Selbyville, on the road to Roxana. This church was organized in 1883. They purchased a one-acre church site on May 13, 1884, from James R. Bishop. This church was located on the Selbyville-Head of Sound Road and was named Long's A. M. E. Chapel.

The present one-acre site was purchased, on Oct. 24, 1924, from Philip C. Showell and the church was moved across the fields to the new site. The name "Zoar" was then adopted. On Oct. 5, 1929, the Balto. Trust Co. donated a strip of land 25 ft. wide as an outlet for the property.

Calvary Holy Church, colored, hold their meetings in an old schoolhouse about two miles east of Selbyville.

Williamsville M. P. Church was organized in 1905 and a church was built on the edge of the town. This church was destroyed by fire in August, 1910. A new church was built on the same site. It was closed in 1913. The building was sold to the Mechanic's who moved it into the center of the town where it was put in use as Mechanic's Hall. In 1945, the building was converted into a dwelling.

A Church of the Sanctified was built in Williamsville in the fall of 1892. It was located where Lynch's Hatchery now stands. The building was destroyed by fire on July 10, 1894 and was not rebuilt.

Sound Methodist Church (M.E.) is located a short distance east of Williamsville. The first church was built in 1784 and was located at Johnson's Corner where the Johnson family graveyard is located. The first church was built through the efforts of Freeborn Garretson, the horseback-riding early missionary of Methodism.

Mr. Garretson preached here for the first time on Apr. 3, 1779. He preached again on June 2, 1779 and he mentioned in his Journal that the Baptists were very active in this section.

The church site was donated, for 20 shillings, on Apr. 29, 1784 by John Robinson to Solomon Evans, Arthur Williams, Andrew Williams, Wm. Powell and Ezekiel Williams of Sussex County and James Law, John Aydelott, John Dier and John Coe of Worcester County, Maryland, trustees. The site "stood

The Old Sound M. E. Church is one of the oldest of that denomination in Sussex County. Freeborn Garretson preached in this section for several years, holding services under the branches of a white oak which yet stands about a mile north of the present church, and at the head of Assawoman Bay. Speaking of the meetings held there, he says, in his diary: "The work of the Lord broke out there, the people wept on every side, and after a sermon of three hours seemed fixed to the spot." It is a tradition that he felled the first tree that was used in the erection of the chapel which, with the aid of thirty converts, he built in 1784.

It was of hewed frame, and shingled on sides as well as roof. One acre of ground was purchased, for which twenty shillings were paid. The deed, bearing date of April, 1784, was granted to Trustees James Laws, John Aydelott, Solomon Evans, Arthur Williams, Andrew Williams, Ezekiel William, John Dier, William Powell and John Coe. William Powell was elected clerk. The deed contains the proviso "that the ministers preach no other doctrine than is contained in Rev. John Wesley's notes on the New Testament, and his four volumes of sermons." From the year of its erection until 1806, services were held without interruption. In that year a meeting of the trustees was held, at which it was decided to adjourn *sine die*. This action was taken on account of the lack of money necessary to repair the chapel, which had become wholly unfit for use. In 1807, after ten days' notice, the congregation again convened, when the name was changed to Williams' Chapel. The trustees elected were Arthur Williams, Ezekiel Williams, William Rickards, William Powell, Thomas Evans, Robert Wildgoose and Isaac Rogers. The old church was repaired and again occupied. In 1828 it was again in need of repairs, and an appeal for subscriptions was made to "all charitable and well-meaning persons, friendly to the religion of Christ." A year later it was rebuilt, and services were held until 1876. At that time it was abandoned, and a new church erected about a mile southeast of the original site. It is yet occupied, and services are being held regularly.

Long's Chapel, M. E. (colored), was built in 1883. The land was donated by James Bishop to Trustees James Williams, George Bingle, Haady Selby, Arnold Purnell and John Hutchins. The chapel has now a membership of thirty persons.

**SELBYVILLE.**—This thriving little town lies near the line dividing Delaware from Maryland. While its territory was still under Maryland jurisdiction, one Matthew McCabe was a resident in the vicinity and a blacksmith. His principal business was the forging of plow-shares. He served as a soldier through the Revolution, and died of the small-pox in after years. He lived upon a tract of thirty acres called "Long Lot," which, in 1818, was resurveyed to Arthur McCabe. A year previous to that time Joseph Jena and Isaiah Long erected a saw-mill upon

the Run at the place now known as Selby's Mill-pond, which they conducted for many years and sold to Samuel Selby, who, in 1842, moved a store to the place from over in Maryland. Selby sold his store to William S. McCabe, the present owner, who, in 1850, built another store, which ranks third in the commercial interest of Sussex County.

Other stores were opened from time to time and have been kept respectively by Stephen Long, Jos. Layton, William G. Davis, John D. McCabe, George W. Ivins and John Poole. In 1879 a saw-mill was moved to Selbyville by Messrs. Parker and Garmon from Wicomico County, Maryland, and three years later removed to Williamsville, where it is now operated. The Selbyville "Steam Saw and Planing Mill," with a daily capacity of eight thousand feet, was erected in 1881, by E. J. Long, J. McNeill and H. Campbell.

W. S. McCabe & Son have erected a steam flour-mill, with a capacity of thirty barrels a day. In connection with this there is an elevator to facilitate the shipment of the surplus grain.

The post-office was established in 1845, with Josiah Selby as postmaster. He was succeeded by the following persons: Isaac McCabe, W. S. McCabe, E. M. McCabe, W. G. Davis, John W. Poole and the present official, Miss Annie Dukes.

Salem M. E. Church, at Selbyville, was organized by a congregation which first worshipped in the residence of David Murray. The first church building was erected about 1812 in a pine thicket near Sandy Branch, and was also used as a school-house. It was occupied until 1847, when the second church was built. This gave way in 1884 to the present building, in the corner-stone of which are sealed the histories of its predecessors.

There are two public burial-grounds at the town, in which interments still take place. The oldest is the "Joseph Long," the first interment having taken place over a hundred years ago. The "Hickory Tree Graveyard" derives its name from the fact that the remains of Mary Campbell, oldest daughter of Benjamin, and the first person interred, lie under a hickory tree, which is still standing.

Wissahickon Tribe, *I. O. R. M.*, No. 20, was instituted February 12, 1884, with the following charter members: W. J. Rankin, I. W. Long, W. R. McCabe, W. M. Morris, J. W. McNeill, C. S. Hamblin, C. J. Barker, F. P. Harper, E. D. Davis, J. F. Dukes, J. W. Poole, George W. Ivios, D. J. Long, M. L. Watsoo, Albert Parker, Seth E. Pingler, E. W. Pingler, E. T. Williams, J. W. McCabe, C. W. Murry, W. J. Murry, T. W. B. McNeal, A. W. Murray, A. J. Hudson.

**ROXANNA.**—This hamlet is situated about four miles northwest of Selbyville. It has had three names, "Dog's Ear Corner," "Centreville" and the present. At the head of the Sound, Joseph Wilgus opened a store in 1794, which he continued until 1801. He also operated a brandy still, to which the fruits of the

(Scharf's History of Delaware - 1888)

DELAWARE CHURCH ARCHIVES

Minutes, 1846--, 3 vols.; in possession of George Marsh. Register (baptisms, marriages, probationers, members, class records). 1860--, 5 vols.; in possession of pastor, Rev. Alpha B. Frye. Sunday School, 1936--, 12 vols. (1 vol. for each class); in possession of Mrs. Alpha B. Frye. Typed transcript of Register, 1846-1953, in State Archives. Records of incorporation and deeds: Sussex Co. Recorder's office, Deeds Record: vol. B2, p.3030; vol. AAQ84, p.137; vol.BJ83, p.512; vol.BK84, p.139; vol.BX97, p.103; vol. CCN139, p.69; vol.DDV173, p.38; vol.DDM174, p.210; vol.DPO211, pp.291 and 292; vol.DFK215, p.285; vol.DGE235, p.484.

219. MILFORD NECK METHODIST EPISCOPAL CHURCH, 1790--, Thompsonville.

Organized in 1790. Incorporated 1840 as Sardis Meeting House. First building erected near present site in 1790. It served also as a school-house. Present building was dedicated in 1840. It was rebuilt in 1874. It is a two story frame building with an inscribed stone above the entrance. Church first served by Milford circuit. Now served by Rev. Hugh B. Kelso of Frederica circuit. See: sketch of early history of church, manuscript in possession of H.A. Thompson.

Minutes, 1917--, 1 vol.; in possession of Harry Clifton. Register, 1917--, 1 vol.; Financial, 1917--, 1 vol.; in possession of pastor, Rev. Hugh B. Kelso, Frederica. Sunday School, 1926--, 1 vol.; in possession of H.A. Thompson, Ladies' Aid Society, 1930--, 1 vol.; in possession of Mrs. Mary DeBennett, Milford. Deeds, 1830 and 1840, Constitution, plot, and picture of first church; in possession of H.A. Thompson. Incomplete records, 1858-1917, in parsonages of Frederica, Harrington, Houston, and Milford. Records of incorporation: Kent Co. Recorder's office, Deeds Record; vol. A4, p.66; vol.A12, p.348.

220. SALEM METHODIST EPISCOPAL CHURCH, 1790--, Church St., Selbyville.

Organized and first church erected, at northern edge of town, in 1790. This church was called Sandy Branch and was used until 1834 when a new church was built 50 yards northeast of first site, and the present name was adopted. In 1884 a new church was built on Church St. Each of those was a one story frame structure. Present building was dedicated in 1911. It is a one story granite block structure with a belfry and bell. First settled clergyman, unknown. See: D.J.Long, historical sketch in The History of Selbyville, (Selbyville, privately printed, 1934).

Minutes, 1844--, 1 vol.; in possession of H.Long; Register, 1906--, 5 vols.; in possession of pastor, Rev. Roy T.Thawley. Financial, 1906--, 1 vol.; in possession of Raymond Morris. Sunday School, 1844--, 10 vols.; in possession of L.W.Long, Jr. Records of incorporation and deeds: Sussex Co. Recorder's office, Deeds Record, vol. AU43; vol.AV44, p.163; vol.BBK104, p.464; vol.BBV121, p.538; vol.DMP194, p.504.

221. NEWPORT METHODIST EPISCOPAL CHURCH, 1796--, 116 Main St., Newport.

Organized 1796 as a result of a series of revival services conducted during the preceding ten years under the leadership of Rev. Mr. Caldwell of Wilmington and a local evangelist, a young girl recently arrived from Ireland. Services were held in the schoolhouse until 1809 when a small frame church was built on the present site. This was replaced in 1865, since which time the building has been remodeled twice, in 1890 and again in 1937. Two story brick building with stained glass windows. First settled clergyman, Rev. Ezediel Cooper, who served this congregation in connection with the Asbury

(WPA - Church Records of Delaware - 1940)

## Sussex County, Delaware (continued)

of St. Johnstown Methodist Episcopal Church. The same year they were incorporated, they bought of Samuel Stephens land "on which the Methodist Meeting-house now stands." The second structure erected was in 1822 and on September 19th, 1872, they erected the present building. It was improved in 1896. This church is in Nanticoke Hundred and is one mile east of Greenwood.

St. Paul's Methodist Protestant Church, Little Creek Hundred, one and a half miles southeast of Laurel, was organized by the Rev. T. H. Burgess in the Sharp's schoolhouse in 1866. The church was built in 1870. In 1868, under the pastorate of Rev. Jeremiah Clay, active measures were taken for the erection of a church building, and three years later, the edifice was dedicated by the pastor in charge, Rev. W. D. Litsinger, the cost being \$800.00. The original members were Elizabeth Gordy, Leah Gordy, W. L. Gordy, and John W. D. McGee. The church was improved in 1904 and they built their community house in 1924, at a cost of \$500.00.

St. Thomas Methodist Episcopal Church in Broad Creek Hundred, was at one time called Shortly Methodist Episcopal Church. The land upon which the church was built was given by Levin Hopkins. It was built in 1800 and burned to the ground in 1856. It was again built in 1857, and also in 1887. Repairs have been made on it in 1892 and 1896. The church is closed as an active organization, but once a year they have an annual home coming and anniversary service.

Salem Meeting-house, Methodist Episcopal Church, was organized and built in 1790, near Sandy Branch, outside of Selbyville. Another church was erected in 1846. It ceased to function after the Selbyville church was built in 1885.

Sand Hill Methodist Episcopal Church is a misnomer. Its proper name is Reed's Chapel. See that for details.

Scott's Methodist Episcopal Church is the name of one of the churches in Rehoboth Beach. See Rehoboth for details.

Seaford Methodist Episcopal Church. See St. John's.

Seaford Methodist Protestant Church. See Mt. Olivet.

Selbyville Methodist Protestant Church was organized in 1910 and erected their building in 1912, at a cost of \$6,000.00. When the Milville Methodist Protestant Church was closed, the few members united with the Selbyville society. The Selbyville Protestant group, finding the field pre-occupied, moved building and congregation to Dagsboro in 1924. They sold their lot in Selbyville the following year for \$326.00.

Sharp's Methodist Episcopal Church, stood near Milford. It was active in 1846, closed sometime after that, but it has not been in existence in years.

Shiloh Methodist Protestant Church, Broad Creek Hundred, was built in 1879. The land was donated by W. W. Dashiell of Laurel, and the trustees receiving the land were Levin S. Hitch, and Reuben James. The community house was built in 1943 at a cost of \$1,000.00. The church still stands on the Laurel-Millsboro road.

Shortly Methodist Episcopal Church was the original name of the present St. Thomas Church. For more information see St. Thomas.

Slaughter Neck Zion Meeting-house, Methodist Episcopal Church, in Cedar Creek Hundred, was organized in 1777. They met in the homes of the Stradley's, Rickards and Shockley's, before the church was built. It

Sealed and Delivered  
in the presence of  
Charles S. Hamblin  
Mary A. Murray

Lewin C. Murray *(seal)*  
Bettie W. Murray *(seal)*

State of Delaware } ss: Be it Remembered, That on this  
Sussex County } Eleventh day of October in the  
year of our Lord one thousand nine  
hundred and nine personally came be-  
fore me Charles S. Hamblin a Notary Public  
for the State of Delaware Lewin C. Murray  
and Bettie W. Murray his wife parties  
to this Indenture, known to me personally to be such  
and severally acknowledged this Indenture to be  
their Deed. And the said Bettie W. Murray being  
at the same time privately examined by me,  
apart from her husband acknowledged that  
she executed the said Indenture willingly, with-  
out compulsion or threats, or fear of her husband's  
displeasure. Given under my hand and seal of  
office, the day and year aforesaid.

Charles S. Hamblin.

Received for Record.

Notary Public

February 3rd, A. D. 1910

John W. King, Recorder

Deed John T. Vandenberg et ux to Layton Owens Mfg. Co Inc.

This Indenture made the twentieth day of Janu-  
ary in the year of our Lord one thousand nine hun-  
dred and ten (A. D. 1910) Between John T. Vandenberg and  
Blanche T. Vandenberg his wife of the Town of Bridge-  
ville Sussex County and State of Delaware parties of  
the first part and Layton Owens Manufacturing  
Company Inc a Corporation created by, and exist-  
ing under the laws of the State of Delaware of town  
County and State aforesaid party of the second part  
Witnesseth, that the said parties of the first part,  
for and in consideration of the sum of Eight hun-  
dred dollars current lawful money of the United  
States of America, unto them well and truly paid by  
the said party of the second part, at and before  
the sealing and delivery of these presents, the Receipt  
whereof is hereby acknowledged, have granted, bar-  
guened, sold, aliened, enfeoffed, released, conveyed,  
and confirmed, and by these presents do grant, bar-  
guen, sell, alien, enfeoff, release, convey, and confirm  
unto the said party of the second part its successors

74

running in a Southerly direction 138.77 to the line of lands  
 formerly of the Hrs. of Annuncias Chandler; thence  
 with the same 168 ft. to other lands formerly of John  
 E. Davis; thence with the same in a northerly direc-  
 tion 146 ft. to Street in said Town of Selbyville,  
 thence with the same in an Easterly direction 163  
 ft. home to the place of beginning containing One  
 Half Acre of land be the same more or less, this  
 tract formerly being the school house lot. Together  
 with all and singular the buildings, improve-  
 ments, woods, ways, waters, water courses, rights,  
 liberties, privileges, hereditaments and appurten-  
 ances whatsoever thereunto belonging, or in any  
 wise appertaining, and the reversions and re-  
 mainders, rents, issues, and profits thereof, and  
 all the estate, right, title, interest, property, claim  
 and demand, whatsoever of them the said parties of  
 the first part in law, equity, or otherwise, howso-  
 ever, of in and to the same, and every part and par-  
 cel thereof. To have and to hold the said tenement  
 hereditaments, and premises hereby granted, or  
 mentioned, or intended so to be, with the appurten-  
 ances, unto the said party of the second part Trustee  
 in trust, to and for the only proper use and behoof  
 of the said parties above named being John B. Town-  
 send, William N. McCabe, Caleb L. McCabe, J. Lay-  
 field Long, Sarah J. Brasure, Leander C. Hudson,  
 Edward L. Baker, with full power and auth-  
 ority to sell and convey the same. And the said par-  
 ties of the first part for themselves and their Heirs,  
 Executors and Administrators, Do by these pre-  
 sents, covenant, grant and agree to and with  
 the said party of the second part Trustee and his  
 Heirs and Assigns that they the said parties of  
 the first part and their Heirs all and singular  
 the hereditaments and premises herein above de-  
 scribed and granted, or mentioned, or intended so  
 to be, with the Appurtenances unto the said par-  
 ty of the second part Trustee his Heirs and Assigns  
 against them the said parties of the first part  
 their Heirs and against all and every other Per-  
 son or Persons whatsoever lawfully claiming or  
 to claim the same or any other part thereof they  
 shall and will by these presents Warrant and  
 forever Defend. In Witness Whereof, the said parties  
 of the first part have hereunto set their Hands, and  
 Seals Dated the day and year first above written.

State of Delaware } ss. Be it Remembered, That on this twenty  
 Sussex County } Seventh day of September in the year  
 of our Lord one thousand nine hundred and  
 nine personally came before me Charles  
 S. Hamblin a Notary Public for the State of Del-  
 aware Edward E. Baker, and Leander Hud-  
 son parties to this indenture, known to  
 me personally to be such, and severally acknow-  
 ledged this Indenture to be their Deed. Given under  
 my Hand and Seal of office, the day and year  
 aforesaid

Charles S. Hamblin  
 Notary Public, Sussex  
 Co. Del. Reappointed Apr  
 15, 1908 Term expires  
 Apr. 15, 1912

Charles S. Hamblin,  
 Notary Public:

Received for Record  
 February 3rd A.D. 1910.

John W. King, Recorder.

Deed: Levin C. Murray trust to Jno. G. Townsend Jr. Trustee  
 This Indenture, made the Eleventh (11th) day of  
 October in the year of our Lord one thousand  
 nine hundred and nine (1909) Between Levin C.  
 Murray and Bettie Murray, his wife, of Baltimore  
 Hundred, Sussex County and State of Delaware of  
 the first part and Jno. G. Townsend Jr. of Town-  
 shend, County and State aforesaid Trustee in  
 trust for John G. Townsend Jr., William R. McCabe,  
 Caleb McCabe, Lafayette Long, Isaiah J. Bra-  
 sur, Leander C. Hickson, and Edward E. Baker  
 of the second part. Witnesseth, That the said  
 parties of the first part, for and in considera-  
 tion of the sum of One Thousand Dollars current  
 lawful money of the United States of America  
 unto them well and truly paid by the said par-  
 ty of the second part trustee, at and before the  
 sealing and Delivery of these Presents, the Receipt  
 whereof is hereby acknowledged, have granted,  
 bargained, sold, aliened, enfeoffed, released,  
 conveyed, and confirmed, and by these Pre-  
 sents do grant, bargain, sell, alien, enfeoff, re-  
 lease, convey and confirm unto the said part  
 of the second part trustee his heirs and assigns,  
 in trust for the use and purposes hereinafter  
 named and for the parties above named. All  
 that said piece, parcel or tract of land lying  
 and being situate in the Town of Selbyville, in  
 Baltimore Hundred, Sussex County, and State of  
 Delaware, being bounded and described as  
 follows, to wit: Beginning at the West corner of  
 a lot of land formerly of John E. Davis and now



504

And the said party  
 of the first part we caused our own executor and Ad-  
 ministrator to by their special command, seal and  
 assent to and with the said party of the second part  
 to have and receive that in the said party of the first  
 part we have and assign the said premises and  
 things therein after described and granted, or mentioned, or  
 intended to be, with the appurtenances, unto the said  
 party of the second part, his heirs and assigns, again  
 to have the said party of the first part his heirs, and  
 assigns all and every their heirs or assigns whomsoever  
 lawfully claiming or to claim the same or any  
 part thereof. In witness whereof by these presents  
 Thomas and Robert de Burgh, Justices of the Peace, the said  
 party of the first part has caused at his hand and  
 seal to be the day and year first above written.

Witness my hand  
 within the County of  
 Middlesex

Henry M. Green

15th Feb 15th 15th

And the said party  
 of the first part we caused our own executor and Ad-  
 ministrator to by their special command, seal and  
 assent to and with the said party of the second part  
 to have and receive that in the said party of the first  
 part we have and assign the said premises and  
 things therein after described and granted, or mentioned, or  
 intended to be, with the appurtenances, unto the said  
 party of the second part, his heirs and assigns, again  
 to have the said party of the first part his heirs, and  
 assigns all and every their heirs or assigns whomsoever  
 lawfully claiming or to claim the same or any  
 part thereof. In witness whereof by these presents  
 Thomas and Robert de Burgh, Justices of the Peace, the said  
 party of the first part has caused at his hand and  
 seal to be the day and year first above written.

Witness my hand  
 within the County of  
 Middlesex

Arthur R. Harris  
 Totten Parson

John B. Johnson Recorder

And the said party  
 of the first part we caused our own executor and Ad-  
 ministrator to by their special command, seal and  
 assent to and with the said party of the second part  
 to have and receive that in the said party of the first  
 part we have and assign the said premises and  
 things therein after described and granted, or mentioned, or  
 intended to be, with the appurtenances, unto the said  
 party of the second part, his heirs and assigns, again  
 to have the said party of the first part his heirs, and  
 assigns all and every their heirs or assigns whomsoever  
 lawfully claiming or to claim the same or any  
 part thereof. In witness whereof by these presents  
 Thomas and Robert de Burgh, Justices of the Peace, the said  
 party of the first part has caused at his hand and  
 seal to be the day and year first above written.

parties of the second part; witnesseth, That the said parties of the first part, for and in consideration of the sum of One Thousand Dollars current lawful money of the United States of America, into them well and truly paid by the said parties of the second part, at and upon the reading and hearing of these presents, the receipt whereof is fully acknowledged, have granted, warranted, sold, aliened, conveyed, released, conveyed, and confirmed, and by these presents do grant, bargain, sell, alien, convey, release, convey, and confirm unto the said parties of the second part their successors and assigns,

all that said piece, parcel or tract of land, lying and being situated in the town of Murphy, Barton County, State of Missouri, being bounded and described as follows, to wit: Beginning at the West corner of a lot of land formerly of some estate and running in a westerly direction 138 feet to the line of the lands formerly of the heirs of Thomas Chandler; thence with the same 118 feet to the lands formerly of some estate; thence with the same in a westerly direction 10 feet to what is now known as the said town of Murphy; thence with the same in an easterly direction 163 feet to the place of beginning, containing one half (1/2) acre of land by the same more or less; this tract formerly being the school town lot; and being the same piece of land that was conveyed by deed signed by John C. Murray and Betsey C. Murray, his wife, and dated the 11th day of October, 1864, to John H. Lawrence, Trustee, in trust for Benjamin R. McCabe, Cashier of the Bank of St. Louis, Cassius J. Brazier, Recorder of Lincoln and Edward D. Baker, and recorded in said record Vol. 1, Page 43 on the 3rd day of February 1865. Together with all and singular the tenements, improvements, woods, ways, waters, water courses, rights, liberties, privileges, incidents and appurtenances whatsoever thereto belonging, or in anywise appertaining and the services and burdens, duties, rents, issues and profits thereof, and all the estate, right, title, interest, property, claim and demand whatsoever of them the said parties of the first part in law, equity, or otherwise, howsoever, of, in, and to the same, and every part and parcel thereof. To have and to hold the said tenements, improvements, and premises hereby granted, or mentioned, or intended so to be, with the appurtenances unto the said parties of the second part their successors and assigns, to and for the only proper

and witness of the said parties of the second part  
 their successors and assigns forever and the said parties  
 of the first part do hereby covenant, grant and  
 warrant unto the said parties of the second part their  
 successors and assigns that they the said parties of  
 the first part and their heirs and assigns shall  
 forever and lawfully hold unto the said parties of  
 the second part and their heirs and assigns the  
 premises unto and forever firm above described and  
 granted, contained, or intended so to be, with the  
 understanding with the said parties of the second part  
 their successors and assigns against them the said  
 parties of the first part their heirs and assigns all  
 and every their claims or demands whatsoever  
 claiming to have the same or any other part thereof  
 they shall and will by their parties to arrive and  
 receive due and lawful payment, the said parties of  
 the second part have unto at their land and here,  
 to wit the day and year first above written.

Witness my hand and seal this 11th day  
 of February 1915.  
 \_\_\_\_\_  
 J. C. ...  
 Trustee

John L. Townsend, Jr.  
 Trustee in Trust for  
 William R. Melale, John L.  
 Thomas, Raymond Long, Joseph  
 S. Francis, Alexander C. Hudson  
 & Edward D. Kears.

State of Delaware, ss. In the County of Kent, that on this  
 11th day of February in the year  
 1915, of our Lord one thousand nine hundred  
 and fifteen, at a certain place in the County of Kent  
 in the State of Delaware, to-wit: at the City of Dover  
 in the County of Kent, the said John L. Townsend, Jr.  
 Trustee in Trust for William R. Melale and others  
 known to me personally to be such, and he acknowledged this  
 instrument to me his  
 Notary Public, and he acknowledged this instrument to me his  
 Notary Public, the day and year first above written.

Charles H. Hamilton  
 Notary Public  
 February 11th A. D. 1915  
 John L. Johnson, Recorder

John L. Townsend, Jr. do hereby certify that on this  
 11th day of February in the year  
 1915, of our Lord one thousand nine hundred and fifteen  
 at a certain place in the County of Kent in the State of Delaware,  
 to-wit: at the City of Dover in the County of Kent, the said  
 John L. Townsend, Jr. and his wife Jennie R. Townsend,  
 known to me personally to be such, and they acknowledged this  
 instrument to me their Notary Public, the day and year first above written.

...and appertinances thereto belonging or in any wise appertaining. To  
have and to hold the said parcel of Land and appertinances  
unto him the said James Hickman his heirs and assigns forever to the  
only proper use benefit and behoof of the said James Hickman his  
heirs and assigns forever, and to no other use or purpose whatsoever; and  
the said Eben Long and Sophia his wife doth Covenant and agree to  
and with the said James Hickman, that they have good right and  
lawful authority to sell and convey the said Land premises and  
appertinances thereto belonging unto the said James Hickman his  
heirs and assigns forever and that they the said Eben Long and  
Sophia his wife, the above described Land and premises according to  
the line and limits thereof, does and will forever Warrant and  
 defend the same against the lawful claim or claims of them the  
said Eben Long and Sophia his wife their heirs or assigns by law  
or under them or either of them In Testimony whereof they have  
hereunto set their hands and seals the day and year first above  
written

signed, Sealed and Delivered in the presence of Eben Long  
of Ben. Burston, Stephen Hill, Joseph Long, Sophia Long  
State of Delaware Sussex County. Be it Remembered that on the 2<sup>nd</sup> day  
of December in the year of our Lord One thousand eight hundred  
and thirty three before the Subscribers two of the Justices of the Peace  
for said County Eben Long and Sophia his wife married in the  
Indenture personally appeared and acknowledged said Indenture  
to be their act and deed respectively and desired that it might  
be Recorded and that on the said day the said Sophia wife  
of said Eben Long being privately examined by us apart from  
her husband acknowledged that she executed the said Indenture  
voluntarily without Compulsion or threats or fear of her husband  
displeasure Witness our hands the day and year aforesaid  
Ben. Burston, Stephen Hill  
This Deed was lodged in the Recorder office in and for Sussex  
County on the second day of December Eighteen hundred and thirty  
three S. P. W. Kellock Recorder

Deed: Justices of Salem Meeting House From Milburn Murray's wife  
This Indenture Made this second day of November in the year of our Lord  
One thousand eight hundred and thirty three between Milburn Murray of  
Sussex County and State of Del. and Rebecca his wife of the one part  
and Phillip Short, Leatharia Murray, Matthew McCabe, James Long  
Joseph S. Lynch, James M. Bealchum and Meriel Campbell Ladies  
in Trust for the use and purpose herein after mentioned all of the  
said place aforesaid of the other part, Witnesseth that the said  
Milburn Murray and Rebecca his wife for and in consideration  
of the sum of One Dollar Specie to them in hand paid on or before  
the sealing and delivery of these presents the receipt whereof is hereby  
acknowledged and have given granted bargained and sold released  
conferred and conveyed and by these presents doth give grant  
bargain and sell release confer and convey unto them Meriel  
said Phillip Short, Leatharia Murray, Matthew McCabe, James  
Long, Joseph S. Lynch, James M. Bealchum and Meriel Campbell  
and their Successors Trustees in Trust for the use and purpose herein  
after mentioned and declared all the Estate, Right, Title, Interest  
property claim and demand whatever either in Law or Equity which he  
the said Milburn Murray and Rebecca his wife hath unto or upon all  
and singular or certain piece or Lot of Land Situated lying and being  
in Delaware hundred County of Sussex and State aforesaid bounded  
written as follows, viz, Beginning at a marked pine standing in the  
East of an old field thence running North sixty eight and a half degrees  
East forty four to a post, thence South forty four degrees East forty  
four to a post, thence North forty four degrees West forty four  
to a post, thence to the beginning containing Fifty two  
pole eight Tenths of a pole (be the same more or less) together with  
all and singular the houses woods, Waters, ways, privileges and

Appurtenances therunto belonging or in any wise appurtenanting therunto To Have and to Hold all and singular the above mentioned and described Lot or piece of Land with all and singular the appurtenances therunto belonging to them the said Phillip Threl, Racheliah Murray, Matthew McCabe, James Long, Joseph S. Lynch, James M. Beatchum and Merrill Campbell and their successors in office forever in Trust for the use of the members of the Methodist Episcopal Church in the United States of America according to the rules and discipline which from time to time may be agreed upon and accepted by the ministers and Preachers of the said Church at their General Conferences in the United States of America and in further Trust and Confidence that they shall at all times forever hereafter permit such Ministers and Preachers belonging to said Church as shall from time to time be duly authorized by the General Conference of the Ministers and Preachers of the said Methodist Episcopal Church or by the yearly Conference authorized by the said General Conference and that they shall cause the House now standing on said Lot of Ground with the buildings thereon to be occupied and made use of as a Methodist Meeting House and also as a School House for the neighbourhood around about it and to still continue to use it as a School House and also as a place of Worship for the use of the Methodist Episcopal Church in the United States of America according to the rules and discipline of said Church to preach and expound Gods Holy Word therein and the said Melben Murray and Rebecca his wife doth by their present Warrant and power defend all and singular the premises mentioned and described Lot or piece of Land with the appurtenances therunto belonging unto them the said Phillip Threl, Racheliah Murray, Matthew McCabe, James Long, Joseph S. Lynch, James M. Beatchum and Merrill Campbell and their successors that may be hereafter chosen and appointed according to the rules and discipline of the Methodist Episcopal Church forever from the claim or claims of them the said Melben Murray and Rebecca his wife their heirs and assigns and from all and whatsoever claiming by or under them and from all persons that escape in Sickness or otherwise of the said Melben Murray and Rebecca his wife have hereunto set their hands and affixed their seals the day and year above written

Signed, sealed and delivered in the presence of Melben Murray his wife of us Leadoch Aydelott, Wm Hall & Rebecca Murray his wife State of Delaware. We do Remember that on this second day of Nov 1833 personally appeared before us the Subscriber two of the Sutors of the plea in and for the County of Sussex Melben Murray and Rebecca his wife the grantors named in the above and foregoing Indenture and they the said Melben Murray and Rebecca his wife severally acknowledged the same to be their act and deed respectively and avied it might be recorded as such and we further certify that the said Rebecca Murray being the day and year aforesaid privately examined by us separately from her said husband and each of her hearing she the said Rebecca Murray did declare on a oath that she signed sealed and delivered the said Indenture willingly and freely without the year compulsion or ill usage of her said husband or fear of his displeasure and that we the undersigned we have hereunto set our hands the day and year aforesaid

Leadoch Aydelott, Wm Hall  
 This Deed was lodged in the Records Office in and for Sussex County on the second day of December Eighteen hundred and thirty three  
 J. P. M. Hollocke Recorder

Deeds William Dunning from Betsy Dingle  
 This Indenture was made the third day of December in the year of our Lord One thousand eight hundred and thirty three Between Betsy Dingle of Daysborough Hundred Sussex County and State of Delaware of the one part and William Dunning of the same County and State of Delaware of the other part Witnesseth that for and in consideration of the sum of Thirteen Dollars and Sixty four Cents Current Money of the State of Delaware aforesaid to be the said Betsy Dingle paid

Received the day of the date of this indenture, of the above named John H. Carey full satisfaction for the consideration money mentioned.

State of Delaware, 1886.  
 Sussex County.

William T. Davis  
 Esq. Notary Public  
 Delaware.  
 Appointed Dec. 31, 1885  
 for 1 year.

Be it Remembered, that on the Tenth day of September in the year of our Lord, one thousand eight hundred and Eighty Three personally came before me William T. Davis Notary Public for the State of Delaware Joseph S. Wilson and Mary H. his wife known to me personally to be such, and severally acknowledged this indenture to be their deed; and the said Mary H. Wilson being at the same time present, examined by me, apart from her husband acknowledged that she executed the said indenture willingly without compulsion or threats or fear of her husband's displeasure. Given under my hand and seal of office this ... and year aforesaid, at Georgetown.  
 William T. Davis Notary Public.

Witness my hand and seal of office this ... and year aforesaid, at Georgetown.  
 William T. Davis Notary Public.  
 Witness my hand and seal of office this ... and year aforesaid, at Georgetown.  
 Wm. H. Boyce, Recorder.

Deed William C. McCabe to The Trustees of Salem M. E. Church and their successors in office in trust.

This Indenture, Made the fifth day of May in the year of our Lord one thousand eight hundred and eighty six between William C. McCabe of Selbyville in the county of Sussex and State of Delaware of the one part and Thomas J. Holloway, Isaiah Long, Jonathan S. Baker, Amor McCabe, William L. Hudson, Elisha M. McCabe, Charles S. Hamblin, Lewis M. Murray and William S. McCabe parties of the other part, Trustees of Salem M. E. Church situate in the town, county and State aforesaid. To them as Trustees and their successors in office in trust, for the benefit of said Salem M. E. Church and no other Witnesses, That the said Party of the first part, for and in consideration of the sum of One Hundred Dollars, lawful money of the United States of America, unto him well and truly paid by the said parties of the second part at and before the sealing and delivery of these presents, the receipt whereof is hereby acknowledged, hath granted, bargained, sold, aliened, enfeoffed, released, conveyed and confirmed, and by these presents, doth grant, bargain, sell, alien, enfeoff, release, convey and confirm unto the said parties of the second part and to their successors in office. All of a certain Lot, piece or parcel of land, lying and being situate in Baltimore hundred in the county of Sussex and State of Delaware described as follows to wit:  
 Lying on the north side of the county road leading from State Road near William S. McCabe Store to the Depot at Selbyville station Adjoining lands of Bedford L. Watson and of the District School Nos. 32 and 108 the same being two thirds of the lot purchased by the Grants of the Heirs of Ananias Chandler deceased, containing ninety eight square perches be the same more or less.

"In trust that said premises shall be used, kept, and maintained as a place of Divine worship for the use of the Ministry and Members of the Methodist Episcopal Church in the United States of America, subject to the Discipline, usage, and Ministerial appointments of said Church as from time to time authorized and declared by the General Conference of said Church, and the Annual Conference within whose bounds the said premises are situate. And if the said premises be sold, the proceeds of the same shall be disposed of in accordance with the Discipline of the said Methodist Episcopal Church

Meters and Bounds of Salem M. E. Church lot are as follows - Beginning at the North and East corner of said Church as a Stationary Boundary, Running North eighteen and one half degrees East six and fifteen hundredths perches to a post corner of School House lot No 32 and 108, thence Beginning of said Church lot South twenty seven and three quarters degrees East ten perches to the edge of County Road leading from Wm L. McCabe's Store to the Depot and with the same South sixty three and one quarter degrees, West nine and ninety two hundredths perches to lands of Mr. L. Watson and with the same North twenty eight degrees, West nine and seventy three hundredths perches to a line for the aforesaid School House lot and with the same North sixty two degrees, East ten perches home to the place of beginning, containing ninety eight (98) square perches be the same more or less. Together with all and singular the buildings, improvements, ways, woods, waters, water courses, rights, liberties, privileges, hereditaments and appurtenances, whatsoever therunto belonging, or in any wise appertaining, and the reversions and remainders, rents, issues and profits thereof, and all the estate, right, title, interest, property, claim, and demand whatsoever, of him the said William B. McCabe in law, equity, or otherwise howsoever, of, in and to the same, and every part and parcel thereof; To Have and to Hold the said herein described lands together with the hereditaments and premises hereby granted, or mentioned or intended so to be, with the appurtenances, unto the said parties of the second part and their successors in office in trust to and for the only proper use and behoof of the said parties of the second part and their successors in office forever.

And the said William B. McCabe for himself and his heirs, executors and administrators, does by these presents, covenant, grant, and agree to and with the said parties of the second part and their successors in office in trust, that he the said William B. McCabe and his heirs, all and singular, the hereditaments and premises herein before described and granted, or mentioned or intended so to be, with the appurtenances, unto the said parties of the second part and their successors in office against him the said William B. McCabe and his heirs, and against all and every other person or persons whomsoever lawfully claiming or to claim the same or

any part thereof, through, by, from, or under him shall and will by these presents warrant and forever defend. In witness whereof, the said William C. McCabe has hereunto set his hand and seal dated the day and year herein first above written.

Sealed & delivered in the presence of John Duke, John Duke, William C. McCabe, Seal  
Witness the day of the date of this Indenture, of the above named parties full satisfaction for the consideration money mentioned

John Duke,  
Notary Public, State  
of Del. Appointed  
at Trenton, N.J. June 11  
1884  
since May 1886

State of Delaware, ss. Be it Remembered, that on the fifth day of May in the year of our Lord one thousand eight hundred and eighty six personally came before me John Duke Notary Public for the State of Delaware, William C. McCabe party to this Indenture, known to me personally to be such and does acknowledge this Indenture to be his act and deed. Given under my hand and seal of office, the day and year aforesaid, at

John Duke, Notary Public  
Received in Record May 13<sup>th</sup> A.D. 1886.  
Wm. H. Boyer, Recorder.

Recd. Ella H. Bishop et al to John W. Poole.

This Indenture, made the twelfth day of August in the year of our Lord one thousand eight hundred and eighty five between Ella H. Bishop and James R. Bishop of Robinson hundred in the county of Sussex and State of Delaware in the county of Sussex and State of Delaware of the one part, and John W. Poole of Selbyville in the hundred, County and State aforesaid of the other part Witnesseth, that the said Ella H. Bishop and James R. Bishop for and in consideration of the sum of twenty five Dollars, lawful money of the United States, to them in hand, paid by the said John W. Poole at or before the sealing and delivery of these presents, the receipt whereof is hereby acknowledged, have granted, bargained, sold, aliened, enfeoffed, released, conveyed, and confirmed, and by these presents do grant, bargain, sell, alien, enfeoff, release, convey and confirm unto the said John W. Poole and his heirs and assigns, all of a certain lot piece or parcel of land, lying and being situate in Selbyville, Baltimore hundred in the county of Sussex, and State of Delaware, described as follows, to wit: lying on the south side of the Road leading from John Duke Blacksmith Shop to the Depot adjoining the lands of William G. Davis on the East and South, and the grantors on the West said to contain One fourth of an Acre, Be the same more or less. Together with all and singular, the buildings, improvements, fixtures, ways, woods, waters, water-courses, rights, liberties, privileges, Hereditaments and appurtenances whatsoever therunto belonging, or in any wise appertaining and the reversion and reversions, remainder and remainders, rents,



V104 pg 464

Such and both acknowledged this indenture to be their  
free act and deed and the said Lizzie H Reach being at  
the same time privately examined by me apart from her  
husband acknowledged that she executed the said inden-  
ture willingly without compulsion or threats or fear of  
her husband's displeasure given under my hand and seal  
of office the day and year aforesaid

L. B. Chandler Notary Public

Received for Record  
June 25, A.D. 1875

John J. Morris Recorder

D & E D William S McCabe Esq to Trustees of M. E. Church  
This Indenture Made the Nineteenth day of June in the  
year of our Lord one thousand eight hundred and ninety  
five Between William S McCabe and Martha E McCabe  
his wife of Selbyville Baltimore Hundred in the county  
of Sussex and State of Delaware parties of the first  
part and the trustees of Salem M. E. Church and their  
Successors of Selbyville Baltimore Hundred in the county  
of Sussex and State of Delaware parties of the second  
part witnesseth that the said parties of the first part  
for and in consideration of the sum of one hundred  
dollars \$100. sum of lawful money of the United States  
of America unto them well and truly paid by the said  
parties of the second part at and before the sealing and  
delivery of these presents the receipt whereof is hereby  
acknowledged have granted bargained sold aliened infe-  
ffed released conveyed and confirmed and by these presents  
do grant bargain sell alien infeff release convey and  
confirm unto the said parties of the second part and  
their Successors All of a certain lot piece or parcel of land  
lying and being situate in Selbyville lying on the southern  
side of Main Street leading from old State road to the depot  
and extending from above said Street back to street run-  
ning out between L. J. Holloway and J. J. Brascoe the said  
lot is sixty five feet wide and 250 feet deep more or less  
and adjoining the lands of E. M. McCabe and William  
S McCabe and supposed to contain about a half acre  
of land be the same more or less together with all and  
singular the improvements woods ways waters water courses  
rights liberties privileges hereditaments and appurtenances  
whatsoever thereto belonging or in anywise appertaining  
and the reversion and remainders unto issues and profits  
thereof and all the estate right title interest property  
claim and demand whatsoever of them the said parties  
of the first part in law equity or otherwise howsoever  
of in and to the same and every part and parcel thereof  
to have and to hold the said land hereditaments and

premises hereby granted or mentioned or intended so to be  
 with the appurtenances unto the said parties of the second  
 part and their successors to and for the only proper use  
 and behoof of the said parties of the second part and their  
 successors forever and the said parties of the first part  
 for themselves their heirs executors and administrators  
 do by these presents covenant grant and agree to and with  
 the said parties of the second part their successors that  
 the said parties of the first part their heirs all and singular  
 the heirs and assigns and premises hereinabove described and  
 granted or mentioned or intended so to be with the appu-  
 tenances unto the said parties of the second part their  
 successors against them the said parties of the first part  
 their heirs and against all and every other person or persons  
 whomsoever lawfully claiming or to claim the same or any  
 other part thereof by through from or under them shall  
 and will by these presents warrant and forever defend  
 in witness whereof the said parties of the first part  
 have hereunto set their hands and seals dated the day and  
 year first above written sealed and delivered in the presence  
 of John W Davis  
 John Dukes  
 William S McLeabe Seal  
 Martha E McLeabe Seal

State of Delaware  
 Sussex County ss



Be it Remembered that on this the nine-  
 tenth day of June in the year of our  
 Lord one thousand eight hundred and  
 ninety five personally came before me John  
 Dukes a Notary Public in and for the state  
 of Delaware William S McLeabe and Martha  
 E McLeabe his wife parties to this indenture

known to me personally to be such and acknowledged this  
 indenture to be their act and deed and the said Martha E  
 McLeabe being at the same time privately examined by me  
 apart from her husband acknowledged that she executed  
 the said indenture willingly without compulsion or threats  
 or fear of her husband's displeasure given under my  
 hand and seal of office the day and year aforesaid  
 John Dukes Notary Public

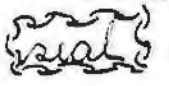
Received for Record  
 June 28 A.D. 1895 John J. Morris Recorder

D & E D John W Manner Etux To Joseph E Betts  
 This Indenture Made the 13<sup>th</sup> day of October in the year  
 of our Lord one thousand eight hundred and ninety four  
 Between John W. Manner and Annie E. Manner his wife  
 of Dagsboro Hundred County of Sussex and state of Del.  
 of the first part and Joseph E Betts of the same  
 County and state of the second part witnesseth that

V. 121 pg 538

part his Heirs and Assigns forever. And the said party of the first part for himself his Heirs Executors and Administrators Do by these presents, covenant, grant and agree to and with the said party of the second part his Heirs and Assigns that he the said party of the first part his Heirs all and singular the hereditaments and premises herein above described and granted, or mentioned, or intended so to be, with the appurtenances, unto the said party of the second part, his Heirs and Assigns, against him the said party of the first part his Heirs, and against all and every other person or persons whomsoever lawfully claiming or to claim the same or any part thereof shall and will by these presents warrant and power defend. In Witness Whereof, the said party of the first part has hereunto set his hand and seal Dated the day and year first above written.

In the Presence of  
Arthur A. Hearn

Henry K. Green 

J. R. S. 2/15/15. A. S. M.  
1.50

State of Delaware, } ss. Be it Remembered, That on this  
Sussex County. } thirteenth day of February in the  
year of our Lord one thousand nine hundred  
and fifteen personally came before me Arthur  
Hearn, Notary Public for the State of Delaware, in and for Sussex County, Henry K. Green, Party to this Indenture, known to me personally to be such, and he acknowledged this Indenture to be his Deed, given under my hand and seal of office, the day and year aforesaid.

Received for Record.

Arthur A. Hearn  
Notary Public.

February 17th A. D. 1915.

John T. Calhoun Recorder.

Deed: John H. Townsend, Jr. Trustee to Trustees of Salem M. E. Church  
Selbyville

This Indenture, made the Fifth day of February in the year of our Lord one thousand nine hundred and fifteen between John H. Townsend, Jr., Trustee in trust for the use of William R. McCabe, Caleb R. McCabe, J. Rayfield Rong, Isaac H. Brasure, Reander C. Hudson and Edward V. Baker as parties of the first part and Edward V. Baker, J. Rayfield Rong, John B. Baker, Reander C. Hudson, James C. McCabe, Elisha B. McCabe, Dan C. Murray, Geo. R. Rong and Olliver Moore, Trustees of Salem M. E. Church of Selbyville, Delaware, and their successors

parties of the second part; Witness, That the said parties of the first part, for and in consideration of the sum of One Thousand Dollars current lawful money of the United States of America, unto them well and truly paid by the said parties of the second part, at and before the sealing and delivery of these Presents, the Receipt whereof is hereby acknowledged, have granted, bargained, sold, aliened, infeoffed, conveyed, confirmed, and confirmed, and by these Presents do grant, bargain, sell, alien, infeoff, release, convey, and confirm unto the said parties of the second part their successors and assigns,

All that said piece, parcel or tract of land, lying and being situate in the town of Selbyville, Baltimore Hundred, county of Sussex, State of Delaware, being bounded and described as follows, to wit: Beginning at the West corner of a lot of land formerly of John C. Davis and running in a southerly direction 138 feet to the line of the lands formerly of the heirs of Unnemas Chandler; thence with the same 168 ft. to other lands formerly of John C. Davis; thence with the same in a northerly direction 146 ft. to what is now Duke Street in said town of Selbyville; thence with the same in an easterly direction 163 ft. home to the place of beginning, containing one half (1/2) acre of land be the same more or less, this tract formerly being the school house lot; and being the same piece of land that was conveyed by deed signed by Edwin C. Murray and Bettie M. Murray, his wife, and dated the 11th day of October 1909 to John H. Townsend, Trustee, in trust for William R. McCabe, Caleb R. McCabe, S. Kayfield Long, Jassiah J. Brasars, Alexander C. Hudson and Edward V. Baker, and recorded in deed record Vol. 1, Page 73 on the 3rd day of February 1910. Together with all and singular the buildings, improvements, woods, ways, waters, water-courses, rights, liberties, privileges, hereditaments and appurtenances whatsoever therunto belonging, or in anywise appertaining and the reversions and remainders, rents, issues and profits thereof, and all the estate, right, title, interest, property, claim and demand whatsoever of them the said parties of the first part in law, equity, or otherwise, howsoever, in, and to the same, and every part and parcel thereof. To have and to hold the said premises, hereditaments, and premises hereby granted, or mentioned, or intended so to be, with the appurtenances unto the said parties of the second part their successors and assigns, to and for the only use

use and behoof of the said parties of the second part their successors and Assigns forever. And the said parties of the first part for themselves their Heirs, Executors and Administrators, Do by these presents, covenant, grant and agree to and with the said parties of the second part their successors and Assigns that they the said parties of the first part and their Heirs all and singular the hereditaments and premises herein above described and granted, or mentioned, or intended so to be, with the Appurtenances unto the said parties of the second part their successors and Assigns against them the said parties of the first part their Heirs and against all and every other Person or Persons whomsoever lawfully claiming or to claim the same or any other part thereof they shall and will by these presents Warrant and forever Defend. In Witness Whereof, the said parties of the first part have hereunto set their Hand and Seal Dated the day and year first above written.

In the Presence of  
S. M. Murray

John L. Townsend, Jr. *Seal*  
Trustee in Trust for  
William R. McCabe, Caleb R. McCabe & Rayfield Long, Issiah J. Brasure, Rander C. Hudson & Edward D. Baker.

L. R. A. 216115. 2. 7. 15.  
\$1.00

State of Delaware } ss. Be it Remembered, That on this  
Sussex County. } Fifth day of February in the year  
of our Lord one thousand nine hundred  
and Fifteen, personally came before me  
Charles A. Stambler a Notary Public for the  
State of Delaware John L. Townsend Jr. Trustee  
in trust for William R. McCabe and others par-  
ty to this Indenture, known to me personally to  
be such, and has acknowledged this Indenture to be his  
Deed. Given under my Hand and Seal of office, the day  
and year aforesaid.

Charles A. Stambler  
Notary Public  
Appointed Apr. 15, 1915  
Term Expires Apr. 15, 1916

Charles A. Stambler  
Notary Public

Record for Record

February 11th A. D. 1915

John V. Calhoun, Recorder.

And John L. Townsend Jr. Trustee to Alfred H. Meier  
Indenture Made the thirtieth day of January  
one thousand nine hundred and fifteen  
between John L. Townsend Jr. Trustee in Trust for William R. McCabe  
and others party to this Indenture and Alfred H. Meier  
party to the first part and Alfred H. Meier

✓ 194 pg. 504



THE WHITE HOUSE  
WASHINGTON

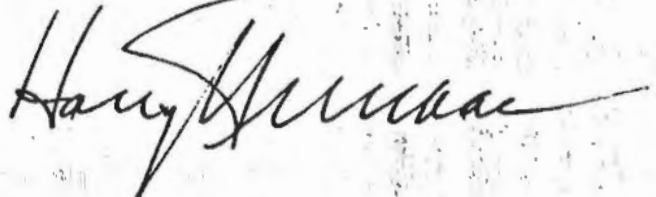
October 14, 1946

Dear Mr. Jarvis:

The fact that Salem Church has carried on its work without interruption for one hundred and fifty-six years bears eloquent witness to its constructive work in the community. Gladly do I send hearty greetings to you and through you to all who participate in the services commemorating so notable a milestone.

My message to the congregation is to be faithful and steadfast in guarding the spiritual tradition which is theirs out of so long a past.

Very sincerely yours,

A handwritten signature in dark ink, appearing to read "Harry Truman". The signature is written in a cursive style with a long, sweeping underline that extends across the width of the signature.

Reverend Charles S. Jarvis,  
Minister,  
Salem Church,  
Selbyville, Delaware.

THE WHITE HOUSE



SAVE THE EASY  
BUY U.S. BONDS  
PAYROLL SAVINGS



Reverend Charles S. Jarvis,  
Minister,  
Salem Church,  
Selbyville, Delaware.



MS 8824 D. H. Papifer

5. Dorothy W. Pepper

Salem Methodist Church  
Sunday School Class  
Mr. Chas. Wesley Coddington Teacher

Top row, L. to Rt.

1. A. Edward Stevens Jr.
2. Harvey S. Williams
3. James B. McCabe
4. C. Wesley Coddington, Teacher

Middle row, L. to Rt.

1. Helena Hall (Mumford)
2. Virginia Richards (Gray)
3. Esther Long
4. Betty<sup>Long</sup> Hudson (Mrs. Leo Hudson)

Bottom row, L. to Rt.

1. Agnes Holland
2. Wm. T. Hudson III (Bill Hunt)
3. Florence Stephens (Bixler)
4. Kathryn McCabe (Tingle)
5. Betty Browne (Lynch)

Wm. B. "Bill" and <sup>wife</sup> Effie McCabe coming out of church.

Around 1938



D. W. Pappas

Salem Methodist Church  
Selbyville, Del.

Salem Sunday School  
Mr. Townsend's Class Last

Pictures taken about  
1945

Top Row, left to right

1. Dollie Williams, John H. Townsend, Stella Magee

Middle Row, Lt. to Rt.

Stella Hudson, Mrs. Walter Wells, Hester Dunn, Mrs. George Walker,  
Mrs. Annie Long, Mrs. Jennie Long, Paula Nations, Vera Hudson  
(Luther) (Ed.) (Armstrong)

Ethie Smith, Mrs. James Lynch.

Bottom Row, Lt. to Rt.

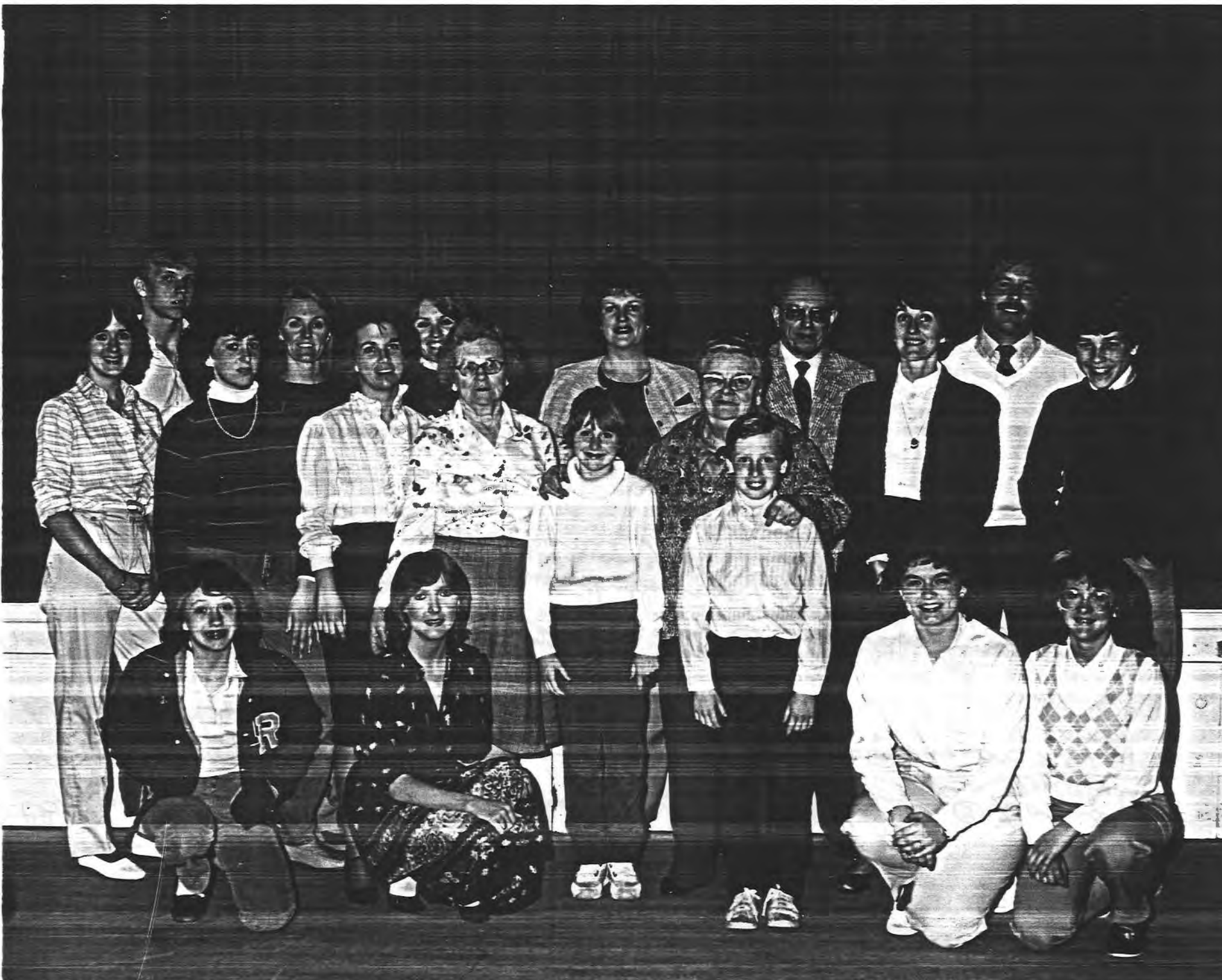
Minerva Pepper, Mama Law, Minnie Murray, Jennie Simpler,  
(Clarence) (Hill) (Lee) (Victor)

→ Mrs. Lizzie Lynch, Miss Clara Holloway, Lillie McCale, Mrs. ~~John~~ <sup>John</sup> Tingle  
School Pupil of Caleb M. Simpler  
Will Law was too.  
Mrs. Edna mother was Mrs. Lizzie Lynch  
Ringle

Nora Flood, Mrs. Mary Eliz. Mitchens, Joyce Ann Hall, Mrs. Annie Downey,  
(John)

Dorothy W. Pepper

Dorothy W. Pepper



D. W. Pepper

Some of Salem U. Methodist Choir Members  
Selbyville, Del.

1984

III Top row - Lt. to Rt.

- ① Clinton Bunting of Geo. Howard + Donna, ② Donna <sup>Crot</sup> Bunting ③ Donna Hudson Mitchell,   
④ Maxine Ungerbuhler, ⑤ Lewis Brumberg Choir Director + Organist  
⑥ David Hudson of Donald + Carolyn

II Middle row - Lt. to Rt.

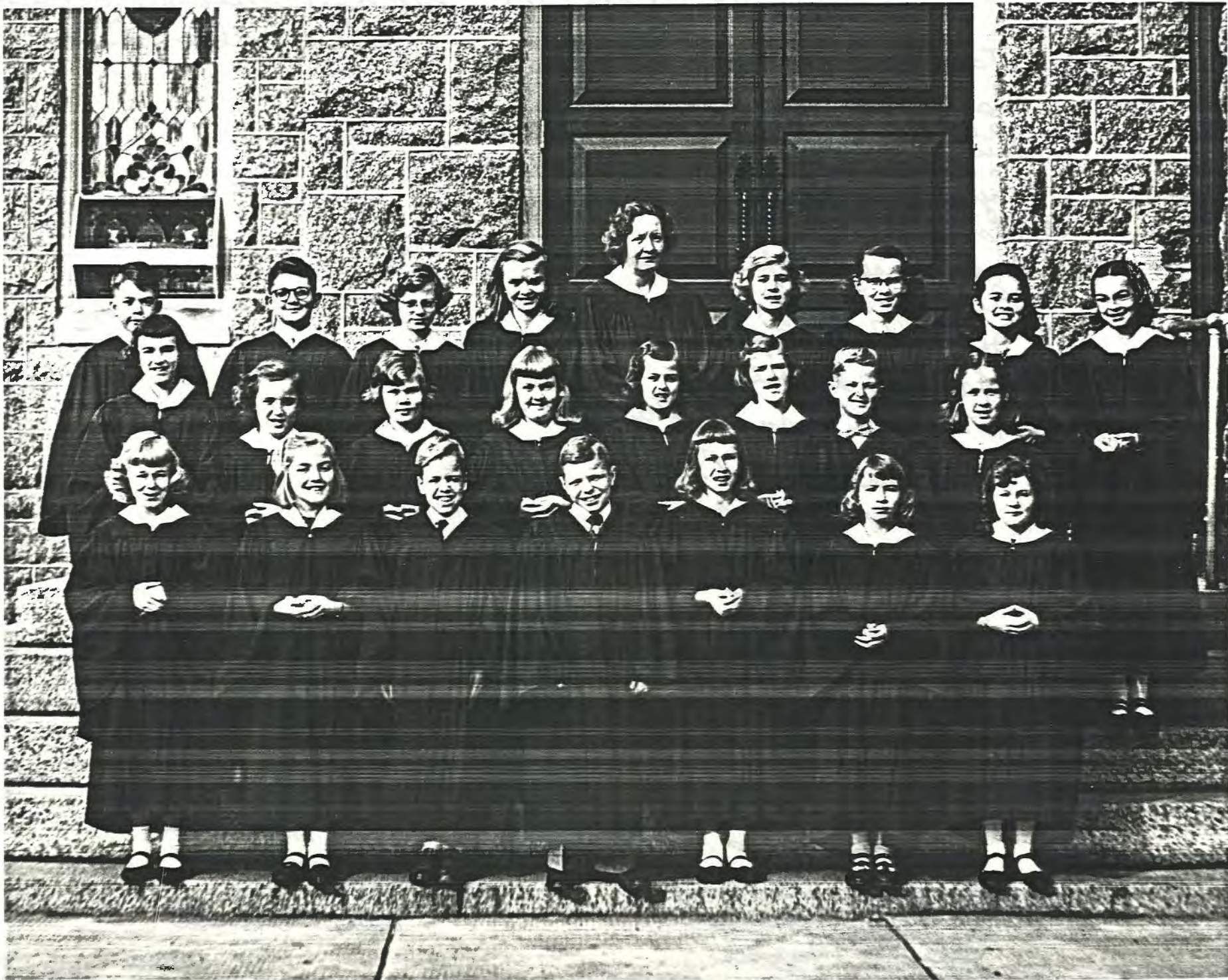
- ① Larrie Law <sup>Gary</sup> ② Mary Beth West of Judy ③ Kathy Tingle  
④ Betty <sup>Stephens</sup> Madara ⑤ Dorothy Williams Pepper (Mrs. Paul),  
⑥ Judy Murray West ⑦ Stuart Megee of Donna <sup>Mrs.</sup> Mitchell,

I Bottom row, Lt. to Rt.

- ① Jennifer West of Judy, ② Angela Long of Norman,  
③ Emily West " " ④ Parris Mitchell of Donna,  
⑤ Celeste Tanner of Norman Jarvis ⑥ Mechelle Law of Gary + Sheryl.

Dorothy H. Pepper \$5.00





D. H. Pepper

# Junior Choir at Salem Meth. Church

Selbyville, Del. 1956

Top Row, Left to Rt.

1. Hayne Jarvis
2. Richard Watson
3. Lynn Murray
4. Ann McCabe
5. Mrs. Louise Pepper, Junior Choir Director
6. Beverly Pepper
7. Julia Ann Pepper
8. Sandra Morris
9. Barbara Jean Hilterson

Middle Row, L. to Rt

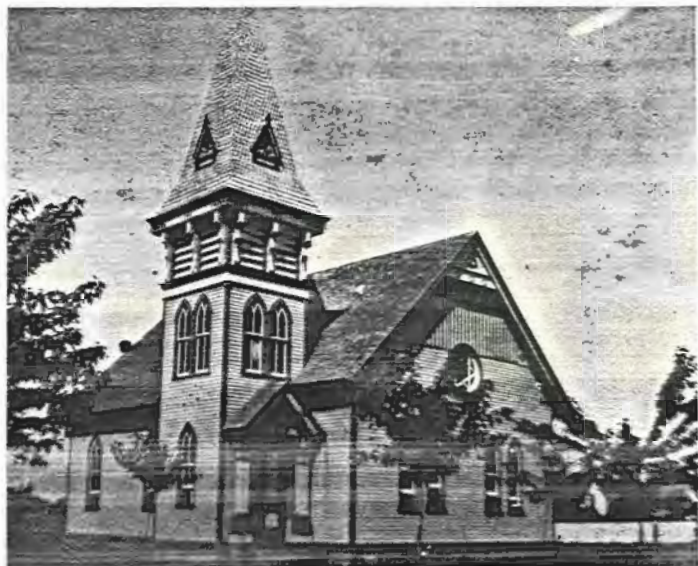
1. Margie Adams
2. Mary Whaley
3. Carolyn Gray
4. Lana Rae Smith
5. Nina Lou Ringle
6. Lanta Taylor
7. Eugene Bunting
8. Nancy McCabe

Bottom Row, L. to Rt.

1. Dianne Bunting
2. Sandra Moore
3. Johnny Jarvis
4. Lewis Brumberg Jr.

5. Betsy Rickards
6. Lana Rae Law
7. Patti Powell

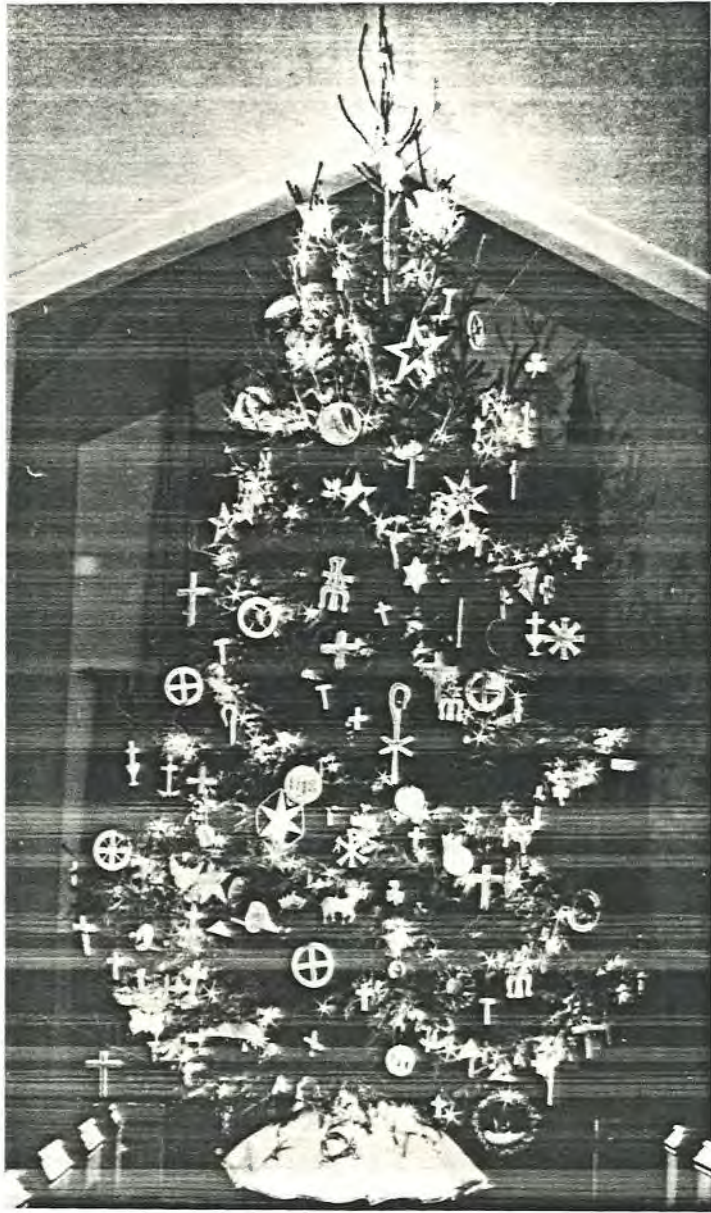
Dorothy W. Pepper



# 3 SALEM BEFORE 1900  
*Built 1883 + 1884*



EDUCATIONAL BUILDING ADDED 1948



Chrismon Tree



Lewis Brumberg--Music Director and Organist



Geraldine Stevens--Asst. Organist

1977

-1975

Salem U. Meth. Church

D. W. Pepper

Beginning of our new Nelson Educational Building  
1948



Mrs. Mame Law (Mrs.)



Howard Pepper



John D. Townsend Jr.

Lorothy H. Pepper

Salem Church  
Mrs. Mame Law

(Mame) Law

Salem Church

Mr. Howard Pepper

Salem Church

U.S.  
Senator John H. Townsend  
& former Gov. of Del.

Delmarva News  
Oct. 24, 1963

Dorothy Lopper  
Selbyville, Del.  
12-5-

63



Photo by Brown Photo Service

## Salem Church Dedicates New Chancel

SELBYVILLE — Sunday, Oct. 20, Salem Methodist Church held a dedication service in its remodeled sanctuary, attended by about 500 persons. The photo shows a portion of the chancel, which was dedicated in honor of John G. Townsend, Jr., and the former ministers of Salem Church. It includes from left to right, Dr. Hartwell Chandler, Dover District superintendent; Bishop Frederick E. Newell, who conducted the dedication and delivered the morning sermon; John G. Townsend, Jr. and the minister of Salem, the Rev. David W. Baker. A Fellowship turkey dinner was served after the morning service by the special projects committee of the Woman's Society of Christian Service. At 7:30 p.m., the new piano was dedicated and a recital presented by Salem students of Mrs. James Adkens. The students presenting the program are; Florence Baker, Dale Bunting, Donna Gray, Bessie Holloway, Gail Lynch, Faye McCabe, Faith McCabe, Linda Lou McCabe, Mary Mumford, Jeffrey Mumford, Judy Murray, Susan Murray and Susan Smith



Rev, Thomas W. Hurley 1977-'81.

Salem Church

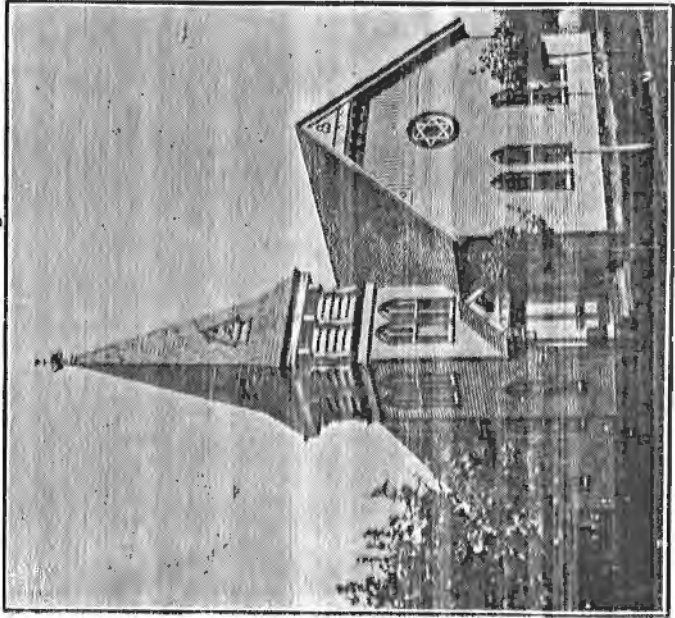




Sellyville Oct 31/1907

Dear Lord

I am at home  
all night. Would have gone back to your  
house but got wet tonight had to come  
home. Your mother was here this  
afternoon to hear from you all she  
is feeling better. Dad & Mrs. get wet  
before she got home. I will write  
more soon. Love to all  
yours.



METHODIST EPISCOPAL CHURCH, SELBYVILLE, DEL

1907



### Greeting:

Dear Friend: Steadily the rising and falling of the tide marks off our days and numbers them into years. Again it creeps over the sands of life's lengthening coast, and soon shall sweep us out to sea upon a New Year's voyage. With all my heart I bid you "Godspeed."

Whatever a brother's fellowship, a friend's comradeship and a pastor's sincere devotion can do, I shall seek to do, to make your voyage rich in blessing.

Sincerely yours,

Rev. Wm. H. Briggs  
1916-1920

Primary Dept. Salem Meth. Church  
1945

Rev. Marlow W. Marine 1925-28



D. H. Pappas

Around 1945

Primary Room, Sunday  
School class of Dorothy  
Pepper (taking picture) Teacher.

Alberta Murching & Betty Madera (helpers)  
& Pauline Timmons

6<sup>th</sup> Top row - Left to RT. of Pupils Gale + Glenn

- |  |                        |
|--|------------------------|
| 1. William Pepper                        | 4. Glenn McCabe (twin) |
| 2. Noel Rogers                           | 5. Billy Stevens       |
| 3. Gail McCabe<br><small>Hickman</small> | 6. Victor Murray       |

5<sup>th</sup> Row - L. to Rt.

- |                                    |                      |
|------------------------------------|----------------------|
| 1. Ronnie Lynch                    | 3. Helen Evans       |
| 2. Beverly Pepper <del>Steco</del> | 4. Lynn Murray Davis |

4<sup>th</sup> row - L. to Rt.

1. Albert Rayne
- 2.
3. Paula Timmons McAuliffe
4. Darrel Brasure - Tolberts son.
5. Erice McCabe

3<sup>rd</sup> row - Lt. to Rt.

1. Ann McCabe Smythe
2. Freddie Stevens
3. Lanta Taylor Conway
4. Julia Ann Pepper Tingle

2<sup>nd</sup> row = 1. Allen Murray of Casey & Eleanor

1<sup>st</sup> row L. to Rt.

1. Wayne Jarvis
2. Margie Adams
3. Mary Whaley
4. Gerald McCabe
5. Kenny Law

9<sup>th</sup>  
Mrs. Marine

Dorothy W. Pepper

Mrs. Marion W. Marines  
Preached 1925-1928 at Salem  
M. E. Church, Selbyville, Del.

Born near Cambridge, Md 1885 &  
died 1944 (Age 59). Buried Lakeside  
Cemetery, <sup>Dover, Del</sup> across, Ind

Mrs. Marines married Paul  
& Dorothy Williams Pepper  
in the Laurel, Del. Methodist  
Church, Jan. 14, 1933. Mrs.  
Marines played the Wedding  
March.



**THE BERGE SISTERS**  
SINGING EVANGELISTS

**Special Songs**  
used by  
**Berge Sisters**  
Singing Evangelists

Address

**Fox Chase, . . . . Phila.**  
or  
**Keansburg, . . . . N.J.**

**Price 5 cents**

1920

*These sisters sang in our Sabon  
when I was young, I enjoyed them  
D.W. Pepper*



VISITS HEBRON. Arnold Miller, right, director of church relations at the Methodist Hospital in Brooklyn, N.Y., visits Dr. and Mrs. Howard B. Warren of Hebron. Warren, a retired methodist minister, gave the hospital approximately \$80,000 in stocks recently.

1982

*D. H. Papaper*

# Against Saloons in Delaware



## No Saloon In Delaware.

MISS MAGGIE S. WILSON

(Tune—"Our Delaware")

On New Castle's granite hill-tops  
And the smiling vales between,  
On her sunlit plains and hillocks,  
And the meadow lands so green,  
Men are rising up in conflict  
With a foe that's everywhere ;  
This their fearless, daring edict—  
No saloon in Delaware.

### CHORUS.

Oh, our Delaware! Our beloved Delaware!  
For a stainless flag is waving  
In beloved Delaware.  
Oh, our Delaware! Our beloved Delaware!  
Here's the loyal son that pledges—  
No saloon in Delaware.

Where the wheatfields wave in beauty  
In the peaceful land of Kent,  
There true men will do their duty,  
Doom the foe to banishment ;  
True-blue sons and fathers loyal,  
Each the victory will share ;  
Each will give his mandate royal—  
No saloon in Delaware.

Where old ocean's waves roll onward  
On a silver-sanded beach,  
And the orchard boughs lift sunward  
Many a rosy-tinted peach,  
Sussex manhood triumph's bringing,  
Hear the shouts that fill the air ;  
They have set the chorus ringing—  
No saloon in Delaware.

# Against Saloons in Delaware



## DELAWARE, AWAKE!

REV. F. C. McSORLEY.

(Tune—"Marching Through Georgia")

Hear ye sons of Delaware,  
The call that comes to you,  
A call to every man who would  
To Home and State be true ;  
A call to rise in righteousness,  
To think, and pray, and do ;  
Smite with the ballot for temperance !

### CHORUS.

Awake ! Awake ! Ye sons of Delaware !  
Awake ! Awake ! Repeat it everywhere  
Arise and smite our common foe,  
The boasting demon rum ;  
Smite with the ballot for temperance !

Long our foe has triumphed o'er us,  
As a licensed wrong ;  
Long has slain our noble sons,  
A great and mighty throng ;  
Now we'll smite him to the dust,  
We'll smite him good and strong,  
Smite with the ballot for temperance !

Many eyes will weep for joy  
When we shall smite our foe ;  
Many homes will be redeemed  
That now are filled with woe ;  
And Diamond State will grow apace  
As rivers seaward flow,  
Smite with the ballot for temperance !

Then sing it out ye brave and true,  
From hill-top to the sea :  
Proclaim the day of victory,  
The year of Jubilee :  
Our noble state so long enthralled  
By rum, shall now be free ;  
Smite with the ballot for temperance !

Page 1  
 School  
 Church  
 m.  
 Simpson  
 Class # 3  
 Colbyville  
 Lab.

(Catch #) G. W. Simpson	2.00
Julia Simpson	1.00
G. H. Long	5.00
Ritta Long	1.00
Elizabeth Long	.50
E. M. McBabe	4.00
Kate McBabe	1.00
Eligah McBabe	4.00
Julia McBabe	1.00
M. J. Murray	2.00
Eliza Murray	1.00
W. H. Hudson	2.00
Hester Hudson	.50
D. J. Murray	4.00
Ara Murray	1.00
Wm. Stephens	3.00
Mary Stephens	1.00
Louise Brittingham	1.00
E. D. Williams	2.00
Dollie Williams	1.00
Peter Shockley	1.00
Alie Shockley	.25
Electa Long	1.00
N. L. Warren	8.00
Addie Warren	5.00
Mary Warren	2.00

D. W. Pepper

Page 2  
 Meeting  
 Report  
 of  
 the  
 Church

Mary Warren	2 00
Nellie Warren	2 00
Addie Warren	50
Thos Hudson	2 00
Katie Simpler	2 00
Peter Murray	1 00
Lara Murray	50
Sarah A Long	1 00
J B Stephens	2 00
Hattie Hackmore	1 00
John Bowden	1 00
Elisabeth Bowden	1 00
Armist Morris	1 00
Alice Morris	50
Bettie Hudson	1 00
R. B. Hill	3 00
Emma Hill	1 00
Jos. Rickards	1 00
Eva Rickards	1 00
F. H. Simpler	3 00
Clifford Simpler	1 00
Walter Long	2 50
E. V. Baker	3 00
Salie Baker	1 00
Hannah Hudson	50
Nat. Warren	50
Lea Hamblin	50
Willis Davis	2 50
Merrimon Hudson	2 50

B. H.  
 Peffer



Page 3  
 Nelson  
 Church  
 1888

Emma Hill	1.00
Geo. Richards	1.00
Eva Richards	1.00
F. H. Simpler	3.00
Clifford Simpler	1.00
Walter Long	25-
E. W. Baker	3.00
Salie Baker	1.00
Hannah Hudson	50
Nat. Warriner	50
Leo Hamblin	50
Wilis Davis	25-
Wesmon Hudson	25-
Eddie Brasner	25-
Willie McCabe	50
W. E. Simpler	3.00
Mary Murray	25-
Warren Winsor	3.00
John McCabe	50
James McCabe	3.00
Geo. L. Murray	25-
Harry McCabe	50
Al Stephens	1.00
	(over)

Leard Baker	1.00
Francis Baker	2.00
Herbert Baker	50
L. H. Long	1.00

D. H. Peffer

Class No. 3 (C. M. Simpler Leader  
Caleb M. )

Class

Baker E. V.	Long Frank	Murray Allie
Baker Sallie	Long Walter	Murray Emma <i>Emma</i>
Baker Carl	Long Electa	Morris Ernest
<del>Baker Herbert</del> <i>Wm. C. C. C.</i>	Long Sarah A.	Morris Alice
Baker Francis	Long Elizabeth	Shockley Peter
Brasure Eddie	Long Heneretta	Shockley Alice
Bowden Jehn	Long C. H.	Simpler C. M.
Bowden Elizabeth	McCabe Catharine	Simpler Julia
Brittingham Louise	McCabe Elijah	Simpler Frank
Davis Willis	McCabe Julia	<i>Victoria</i> Simpler Victor
Derrickson Wilmer	McCabe Jehn	Simpler Jennia
" <i>Mrs B.</i> Hamblin Lee	McCabe James	Simpler Clifford N.
Hudson Stella	McCabe Hattie	Stevens William
Hudson Hester	McCabe Harry	Stevens Mary
Hudson Daisy	" <i>Mills</i> Murray M. J.	Stevens Lee
Hudson Mary E.	Murray Eliza	Stevens Mrs. Lee
Hill Robert	Murray D. J.	Mary Alice Stevens
Hill Emma	Murray Ara B.	Truitt Cora
	Murray Joshua	

*Dorothy H. Pepper*

# Salem M.E. Epworth League

## C A B I N E T

President, Wm A. Law.

1st Vice-Prest Clara Halloway.

2nd Vice-Prest Mrs. Ollie Moore.

3rd Vice-Prest J.G. Townsend Jr.

4th Vice-Prest Katie Stevens.

Secretary Florence Mumford.

Treasurer Wm B. Derrickson.

Organist Almeda Williams.



Salem M.E. Church

Selbyville, Del.

Vinal E. Hills, Pastor.

1910-1915

D. H. Pepper

# Topics And

## Leaders...

Feb. 5. A winning start. Heb.  
12:1, 2 Tom McCabe

Feb. 12. Lincoln Sunday. Gal.  
5:4, Lk 10:29, 37. A.P. Townsend

Feb. 19. Studies in Christian Ex-  
perience. 2Cor. 3:3, Rom. 12:1, 2.  
W.R. Tubbs.

Feb. 26. The Influence of a  
Great Passion. Phil 3:12-14,  
Psa. 42:1. Clara Halloway.

Mar. 5. Missicnary Day.  
Isa. 54:2, 3. Florence Mumford.

Mar. 12. Numerous and Danger-  
ous foes. 1Pet. 2:11, 1John 2:16,  
Rom. 7:23, 1Cor. 9:27, 1Pet. 5:8.  
C. J. Baker.

Mar. 19. The Equipment. Eph. 6:  
14-17, 2Cor. 10:3-5. Mrs. Dr. Evans

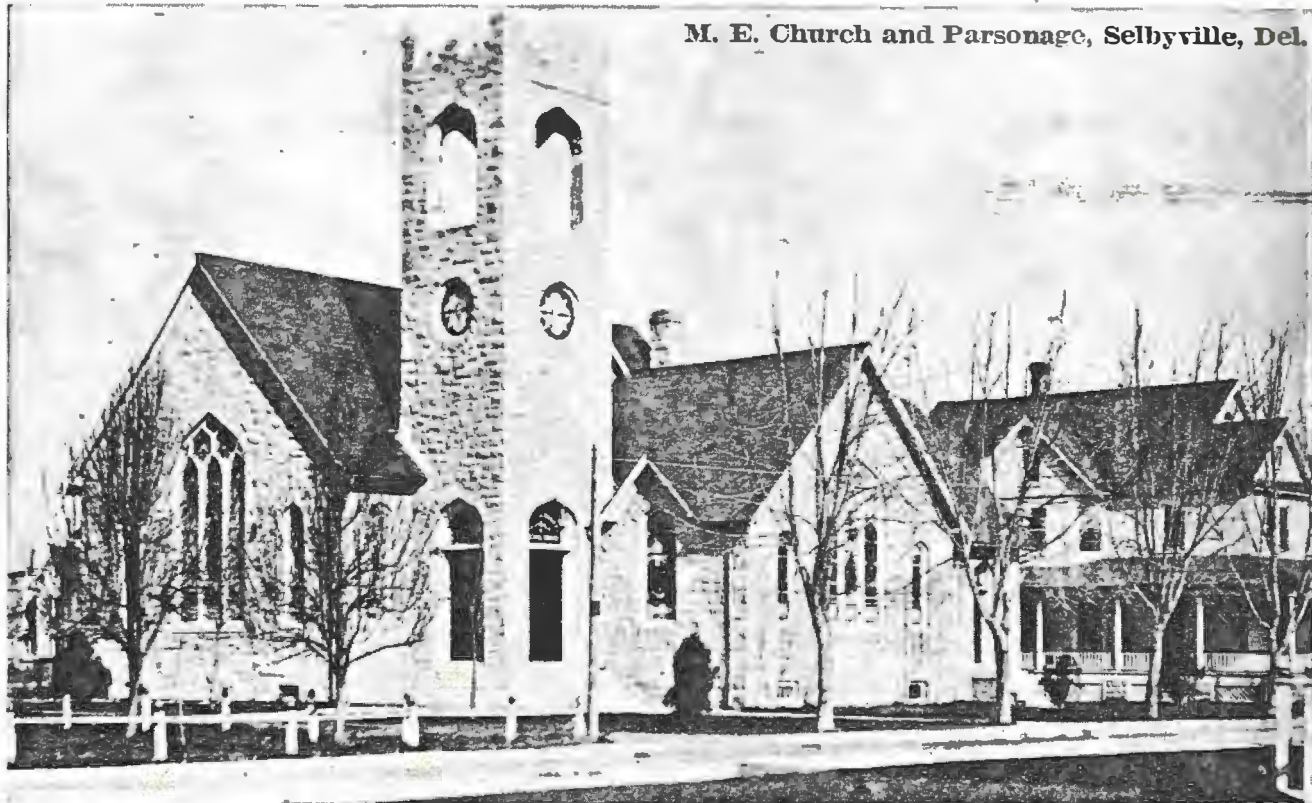
Mar. 26. A Good Soldier—  
2 Tim 2:3; 1 Tim 1:18, 6:12  
Ollie Moore

Apr 2. Temptations jas 1:12-15  
1Pet 5:8, 9, Rom 12:27, Matt 26:41  
John Middleton

Apr 9. A Goob Servant but a  
Bad MASTER 3:5, 6:8-10. col 4:6  
Psa 34:13. Warrie Long

4<sup>th</sup> Salem Church

M. E. Church and Parsonage, Selbyville, Del.



# Salem M.E. Church

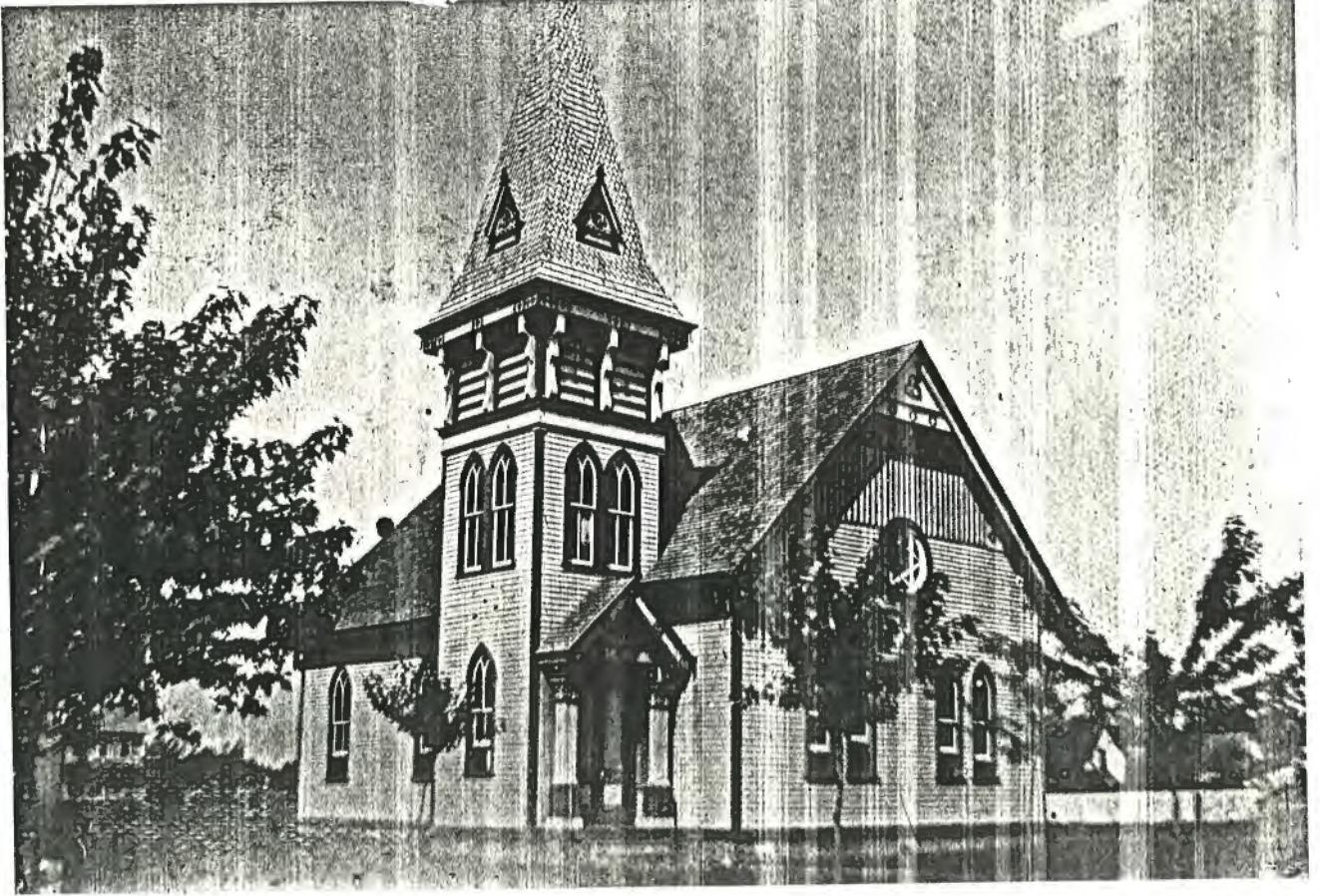
1883 and 1884-1911

3rd Church



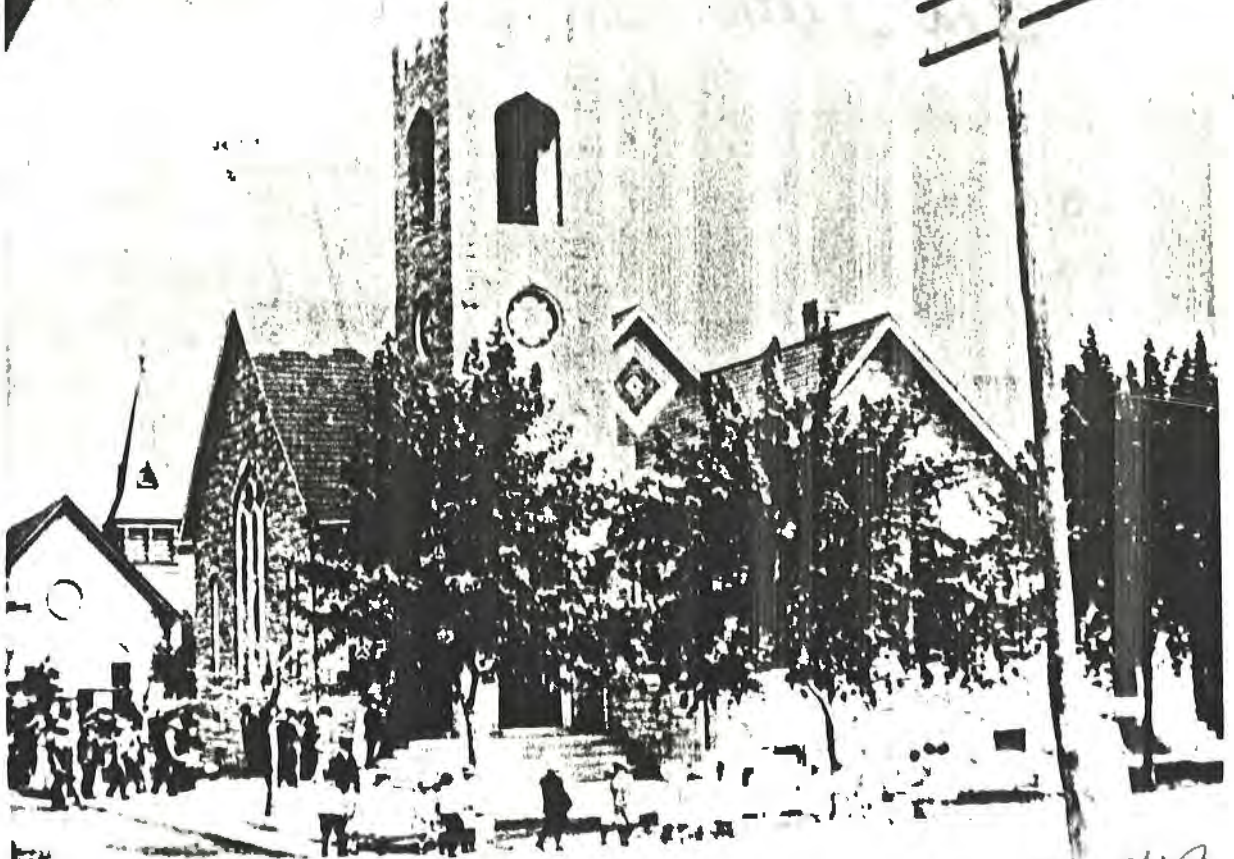
Dorothy H. Pepper

1843 and  
3<sup>rd</sup> Church 1844 Salem, M.E.



Salem M.E. Selbyville

4<sup>th</sup> Church 1911-1912



Dorothy H. Pepper

~~3rd~~ <sup>3rd</sup> Salem Church - Church St. Selbyville, Del.  
Erected + dedicated in 1884, Cost \$7,000.  
Destroyed by fire Oct. 1922.

In 1911 this Bldg. moved to opposite end of lot +  
services here until new Stone Church was built +  
used for school gr. 1 + 2 just before fire.

1884<sup>th</sup> Salem Methodist Episcopal Church

Mrs. Callie Coffins house in back of Church + on Duke St.

D. W. Pepper

Dorothy W. Pepper

3rd + 4th Salem  
Churches, Selbyville.

3rd Salem Church of 1884 moved from  
Church St. to Duke St. in 1911.  
and Salem 4th Church (1911 + 1912) is  
new here - on Church St. People  
are moving from old Salem M.E. to  
new Salem M.E. in 1912.



1849

Selbyville Del. May 28<sup>th</sup> /49

Salem Church Dr  
To Sampson Selby

To sundries for church \$ 597.70

Cr

By Cash received from sundry  
subscribers to church 526.39

Interest from Jan 1<sup>st</sup> 1854 to Aug 9<sup>th</sup> 1854 28.26

\$ 99.57

1849 SELBYVILLE, DEL. MAY 28<sup>TH</sup> /49

SALEM CHURCH DR.

To SAMPSON SELBY  
FOR SUNDRIES FOR CHURCH..... \$ 597.70

CR.

By CASH RECEIVED FROM SUNDAY  
SUBSCRIBERS TO CHURCH..... 526.39

INTEREST FROM JAN. 1<sup>ST</sup> TO AUG. 9, 1854..... 28.26

TOTAL DUE..... \$ 99.57

Dorothy H. Pappas

I have a bill, to the trustees<sup>(3)</sup>  
 of this second Salem Church  
 from Sampson Selby dated  
 May 28<sup>th</sup>, 1849.

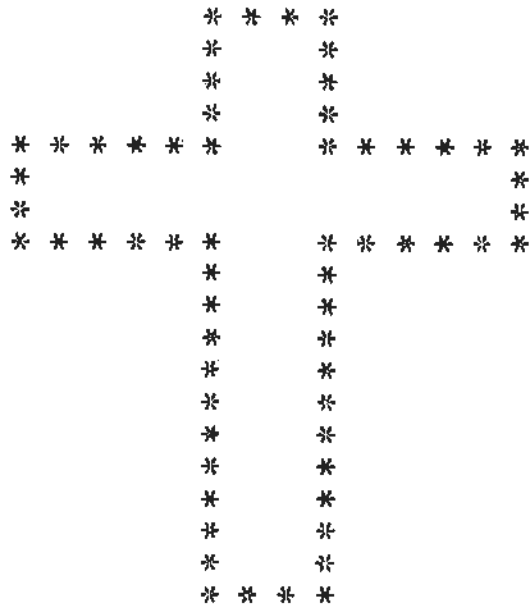
" Sundries for Church \$ 597.70

Credit by cash received  
 from Sunday Subscribers 526.39  
 to Church

Interest from Jan. 1<sup>st</sup> to Aug. 9, 1854 \$ 71.31  
\$ 28.26

Total due \_\_\_\_\_ \$ 99.57

Dorothy H. Pepper



1962

1963

Fourth Quarterly Conference

R E P O R T S

of  
SALEM METHODIST CHURCH  
Selbyville, Delaware

I AM THE CHURCH

I AM THE CHURCH!

All the love of God, the great Architect,  
All the sacrifice of Christ, the great Builder,  
All the dreams of dauntless prophets,  
All the faith of hopeful pioneers,  
All the hope of countless millions  
All the joy of conquering Christians are enclosed  
within my walls!

I AM THE CHURCH!

Without me, civilization must crumble!  
With me is eternity!

David William Baker, Minister

*D. W. Baker*



Harry Hoxier

Born c. 1950 in N.C.



# METHODIST MINUTES

IN CELEBRATION OF THE AMERICAN METHODIST BICENTENNIAL

## Remarkable Black Preachers

One of the extraordinary features in early Methodist annals is their record of the emergence of Negro preachers with unusual talent. This is especially surprising when we consider their limited opportunities to secure an education and develop their talents.

Certainly one of the most remarkable black preachers was Harry Hosier, traveling companion and servant/guide of Francis Asbury. Born in North Carolina about 1750 as a slave, he was freed, converted, and became the first black Methodist local preacher. He could neither read nor write—but he could proclaim dramatically and effectively the unsearchable riches of God's love.

Hosier, or Black Harry as he was called, was popular with whites as well as with his own race. Benjamin Rush, a signer of the Declaration of Independence, declared, "Making all allowances for his illiteracy he was the greatest orator in America." Many whites preferred to hear Hosier rather than Asbury or Coke, and Coke even said that Hosier was the best preacher in the world.

Another effective black preacher was known as Uncle Pompey; in his youth he was a

slave of Nathanael Moore of Tennessee, a brother-in-law of William McKendree. He was converted at a camp meeting and, showing promise as a preacher, was given his freedom so that he might go where he pleased. Uncle Pompey moved to Middle Tennessee, where he was a well-known preacher to whites. During the Christmas holidays in 1832, when he preached at Old Center Church, the congregation was so large that the people adjourned to the campground where they listened for an hour.

One of Uncle Pompey's last sermons was preached on the final night of a camp-meeting in 1836, again at Old Center. His sermon was only twenty minutes long, but it was stirring: "The whole audience seemed to sway to and fro. . . . Cries for mercy, groans of agony, and shouts of praise were so numerous and loud that, strong and loud as his voice was, one could scarcely hear him, and he exclaimed: 'When de Lord preaches, Pompey stops,' and sat down."

A third black preacher who had unusual influence was known as Mark McNice (or McNease), or Uncle Mark. Born a slave in South Carolina, he later lived in Texas

between Austin and Houston. He had an extraordinary mind—he could repeat any sermon he heard, almost word for word. Soon he was employed to preach once each month to a Baptist congregation, even though he was Methodist by choice.

Later McNice was purchased by the Texas Annual Conference, which gave him his freedom to serve his own people as a roving preacher until his death. Commented O. M. Addison, "When the Master shall crown His saints, this Texas negro preacher will not be the least distinguished among them."

Another black leader who stands high as a devoted Christian and a very great scholar was John Wesley Gilbert of Georgia. Recently, E. Clayton Calhoun of The United Methodist Church called Gilbert (who was a minister in the Colored—now Christian—Methodist Episcopal Church) "a Christian gentleman, professor, scholar, linguist, preacher, lecturer, churchman, missionary, writer, editor . . . one of the finest products of and contributors to Methodist higher education."

Gilbert was born of humble parents near Augusta, Georgia, in 1865. He graduated from Paine College, a school for Negroes jointly sponsored by the Colored Methodist Episcopal Church and the Methodist Episcopal Church,

South. He then attended Brown University, won a scholarship to study Greek at the American School of Classics in Athens, Greece, and later became a professor at Paine.

In 1911 he agreed to accompany Bishop Walter R. Lambuth of the southern Methodist Church to Africa to choose a location for a Methodist mission station. The two men shared all aspects of the trip as Christian brothers. They employed 60 carriers and walked more than 1,000 miles. In his diary, Lambuth wrote: "I know John W. Gilbert as few men do. . . . For sincerity of purpose, high character, and noble ideals, he has few equals and surely no superior. . . . He put not only his brain but his conscience into his work. It was masterful. . . . He is diligent, painstaking, and consecrated. He has breadth, culture, and piety. He is a Christian at heart and in his daily life."

Bishop Lambuth tells about their departure from some Africans who thronged around to shake hands. "I told Gilbert that we had gotten into a country of Methodists. . . . A leper came forward and stretched out his hand. I did not have the heart to refuse him the touch of sympathy. . . . O that I might have had the power to heal! But I offered him what was better—Jesus, the Bread of Life, the Balm of Gilead."

Next week: Fighting "Demon Rum"

Methodist Minutes, compiled and written by  
Walter N. Vernon

American Methodist Bicentennial Subscription Service  
© 1984 by Abingdon Press, Nashville, Tennessee. Litho in USA. B5841

*Margaret Barrett*

*Margaret Barrett*

Isaiah "Zax" Brasure



W. M. WILLYES, ST. LOUIS, MO.

Order of

Baltimore Trust Company  
Baltimore, Md. Feb 17 1905 No. 100

Pay or order to the order of

\$ 100

W. M. Willyes

D. H. Pepper

Pay the Selbyville National Bank  
ON ORDER.

Bozonia Castle No. 16, K. G. E.

*P. A. Melson* Treas.

CREDIT  
THE SELBYVILLE NATIONAL BANK  
SELBYVILLE, DEL.  
Call & previous transactions  
P. A. Melson Cashier

This was the  
last writing  
my father did.  
Signed  
Kate Simpson Stevens

Isiah J. Brasure  
B/ Feb. 2, 1857, D Feb. 5, 1911

Eva Brasure Moore's  
Father  
Ethel Melson Long's  
Uncle

Angie <sup>Melson</sup> Brasure wife of Isiah  
"Zare"  
B/ Oct. 31, 1858 - D. Feb. 16, 1932

Selbyville Hotel, D. Casher Williams, Sr.



Aunt Effie Williams

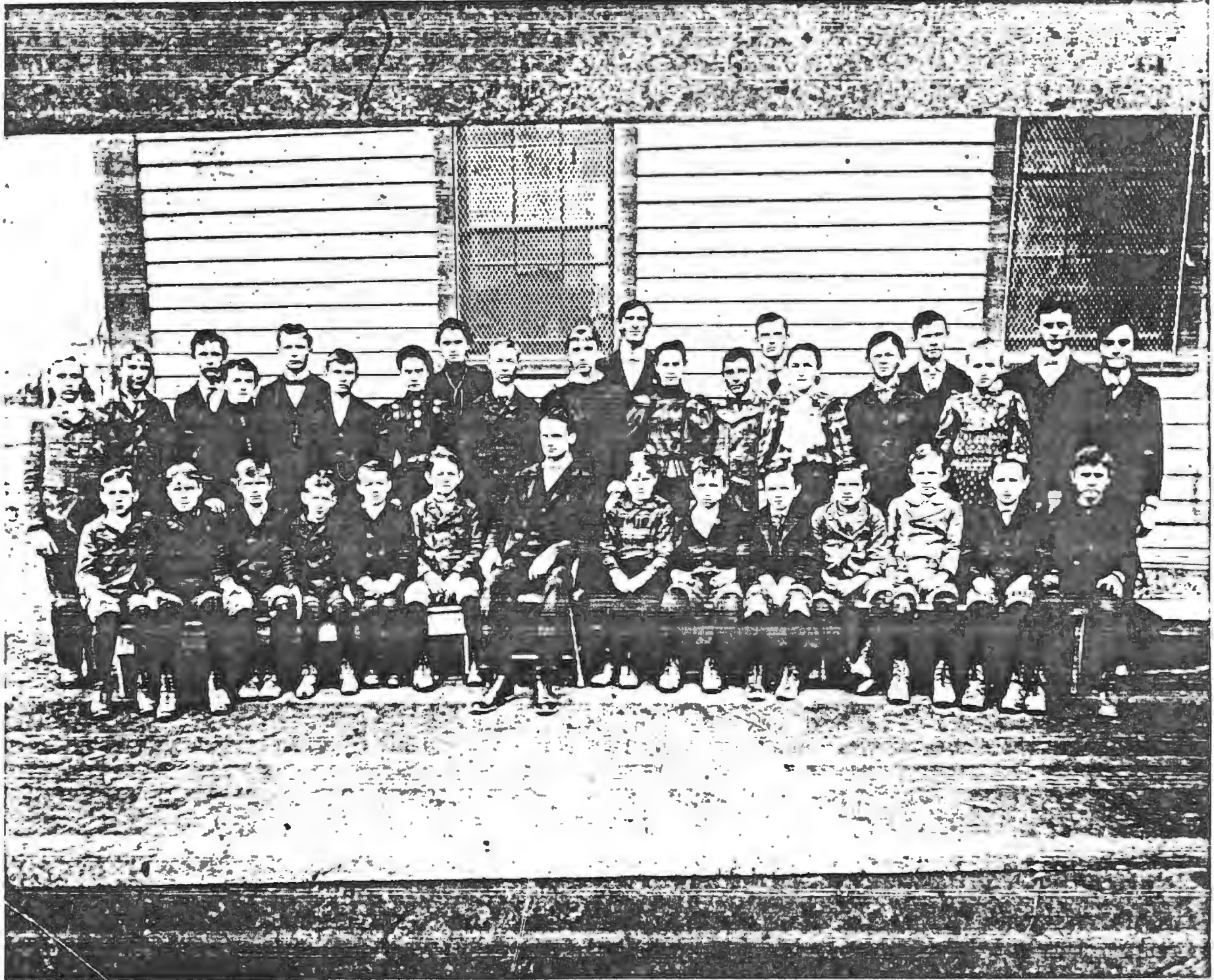
1900

Dorothy M. Pepper



FIRE HOUSE NUMBER ONE, SELBYVILLE, DEL.





Dorothy H. Pepper

First Selbyville Town School  
 { Selbyville School where Salem Center is now 1962  
 also " " present Jim Saw Electric Store (Torn down in 1985)

First row (seated) Left to RT

1. Clifford Simpler # Died
2. George Campbell +
3. Harry McCabe +
4. Wilmer Derrickson +
5. Vernon Hudson "
6. Lee Hamblin # Died
7. Teacher George Williams +
8. Almeda Murray (Williams, & Thompson)
9. Roscoe Murray +
10. Carl Baker +
11. Willie Davis +
12. Willie <sup>Wm</sup> McCabe + Brothers to Thos.
13. Wrah Long +
14. Nat. Warren +  
 Nathaniel L.

In aunt Jennies class.

Ed. McCabe  
 Harb. Esham  
 Addie Warren  
 Bo Williams  
 Ira Hamblin  
 Oscar Morris

Hattie Wickman (McCabe)  
 + Nonnie Murray (Watson)  
 were absent.

Second row standing - L to R.

1. Ed. McCabe # Died
2. <sup>Harb.</sup> Harvey Esham brother to Harry son of <sup>H</sup> Lee
3. L. Kirrie Long - T (1970 died)
4. Katie Simpler (Stevens) +
5. Harry Esham +
6. John McCabe # Died
7. Nettie Warren (~~Wheatley~~) #
8. Sallie McCabe (Fassett, & Rittenhour) +
9. Marvyn Holloway +
10. Jennie Long (Simpler) + Died 1970
11. Call Long (Calvin) + <sup>Paulas</sup> father
12. Addie Warren (Guthrie) #
13. Bow Williams (John D.) +
14. Lem Long (Lemuel) +
15. Myrtle Williams (Torbert) 1968 Died +
16. Ira Hamblin +
17. James Bishop (MD) # Died #
18. Minnie McCabe (Murray) +
19. Allie T. Stevens # +
20. Oscar Morris brother of Raymond +

Picture taken around

+ Died <sup>1968</sup> <sup>1968</sup> # Died by 1968

1<sup>st</sup> Selbyville Town School  
Corner of Main & DuKes St.



Dorothy M. Pepper

1. W.R. TUBBS (TRAINER)
2. URAN LONG
3. BERT CAMPBELL
4. BILL "HOT" HUDSON (WOT.)
5. WILLIE FRANKLIN LONG
6. MYRA HUDSON SMITH
7. DELLA McCABE HOWLAND.
8. CLIFFORD SIMPLER
9. LAURA McCABE HUDSON
10. ANN MELSON WILLIAMS
11. LILA TOWNSEND SAVOY
12. COURTLAND WILLIAMS
13. ETHEL MELSON LONG
14. WILLIAM WILLIAMS
15. HAROLD LONG
16. LIDA WIMBROW
17. GRACE JOHNSON
18. PAULINE REYNOLDS LONG.
19. RAYMOND MARRIS
20. MURRAY
21. MISS EVA DAVIS (TRAINER)
22. MISS CLARA HOLLOWAY (TRAINER)
23. MRS. ANNIE HUDSON (WITH BASKET)
24. JIM CANALL
25. RAYMOND A. LONG.
26. FRANCES ANDREWS
27. LEMMIE HARRISON
28. WIM ANDREWS
29. ROY CAMPBELL
30. ED. STEVENS SR.

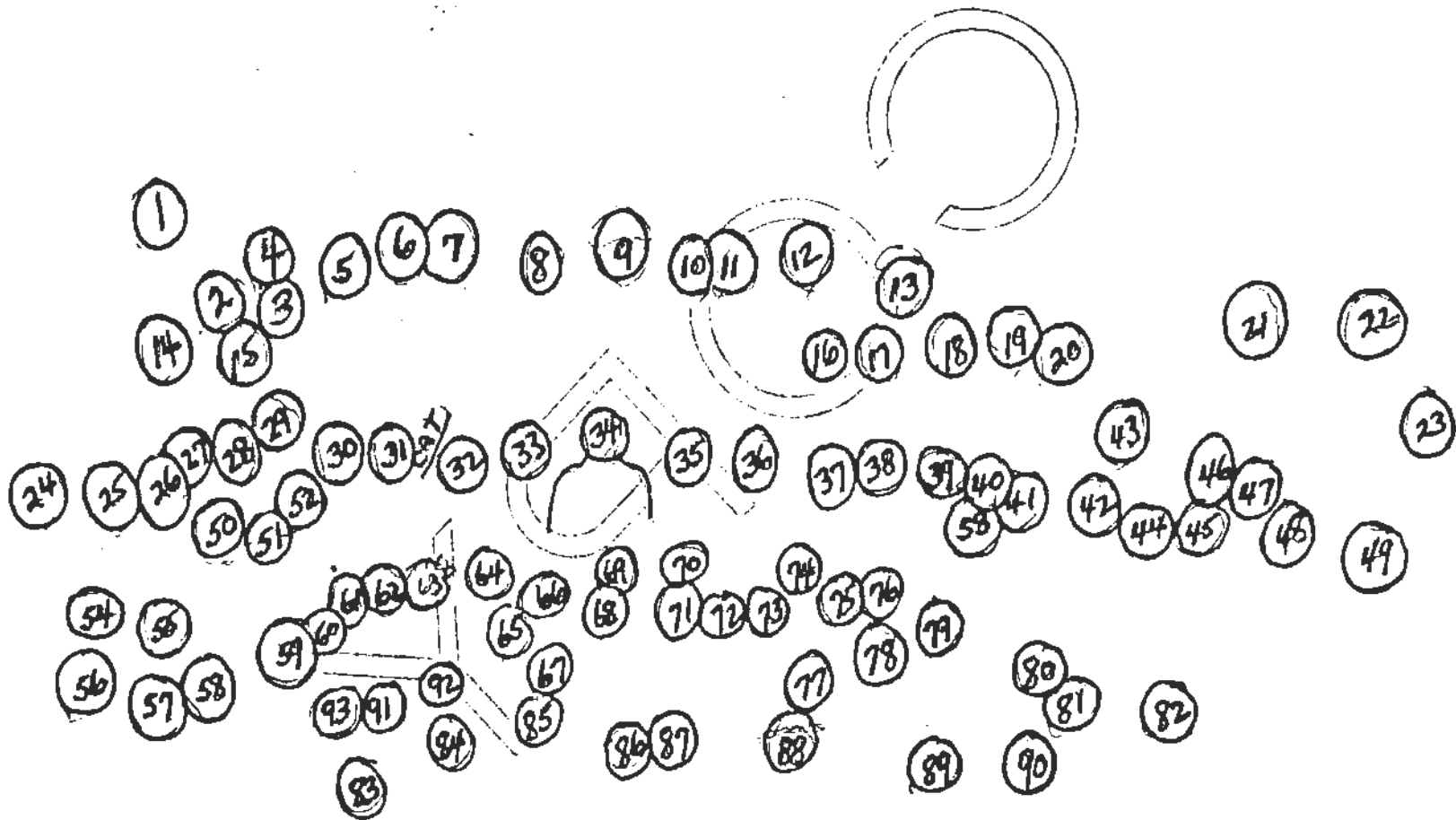
31. GERTRUDE McCABE TRIME  
WITH OFF.
32. ETHEL WARREN BROWN
33. MELLIE EVANS LONG
- 34.
- 35.
36. CORA CANALL HAMLIN
37. GRACE HIGNUTT HUDSON
38. EDNA WILLIAMS SHORT
39. ALICE TINGLE
- 40.
41. MARY HUDSON McCABE
- 42.
43. CHESTER McCABE
44. ELLA McCABE RICHARDS
45. EDNA JOHNSON McCABE
- 46.
- 47.
- 48.
49. MISS MARTHA ROGERS
- 50.
51. JENNIE HUDSON WILGUS
52. PLEORA LONG TAYLOR
- 53.
54. FRANK MUMFORD
55. JOHN McCABE (BUNNY)
56. MCCABE (C.L. JR.)
57. WALTER LONG
58. HORACE JOHNSON
59. FRANCES HUDSON
60. MARGARET HILL WATSON

61. BERNICE CAMPBELL TAYLOR
62. SARA McCABE SCOTT
63. EDNA McCABE HUDSON
64. LULA JOHNSON BEACHAMP
65. PEARL WILLIAMS HABBERTY
- 66.
- 67.
68. FRANK HOLLOWAY
- 69.
- 70.
71. VIRGIL McCABE
- 72.
- 73.
- 74.
- 75.
- 76.
77. WALTER DUKES
78. WIM GUM
79. JOHN GUM
- 80.
- 81.
- 82.
- 83.
- 84.
85. CHESTER EVANS
86. ROEBUCK MARRIS
- 87.
88. RAY HOLLOWAY
- 89.
- 90.
91. EDWARD WILLIAMS
92. VALORUS HUDSON.
93. EVERETTE HILL.

C.L. McCABE JR. }  
 Joe Murray }  
 Patience Long }  
 Anna James }  
 Laura Morris }

Valorus Hudson  
 Werna Hudson  
 Joe Murray  
 Ira Hamblin

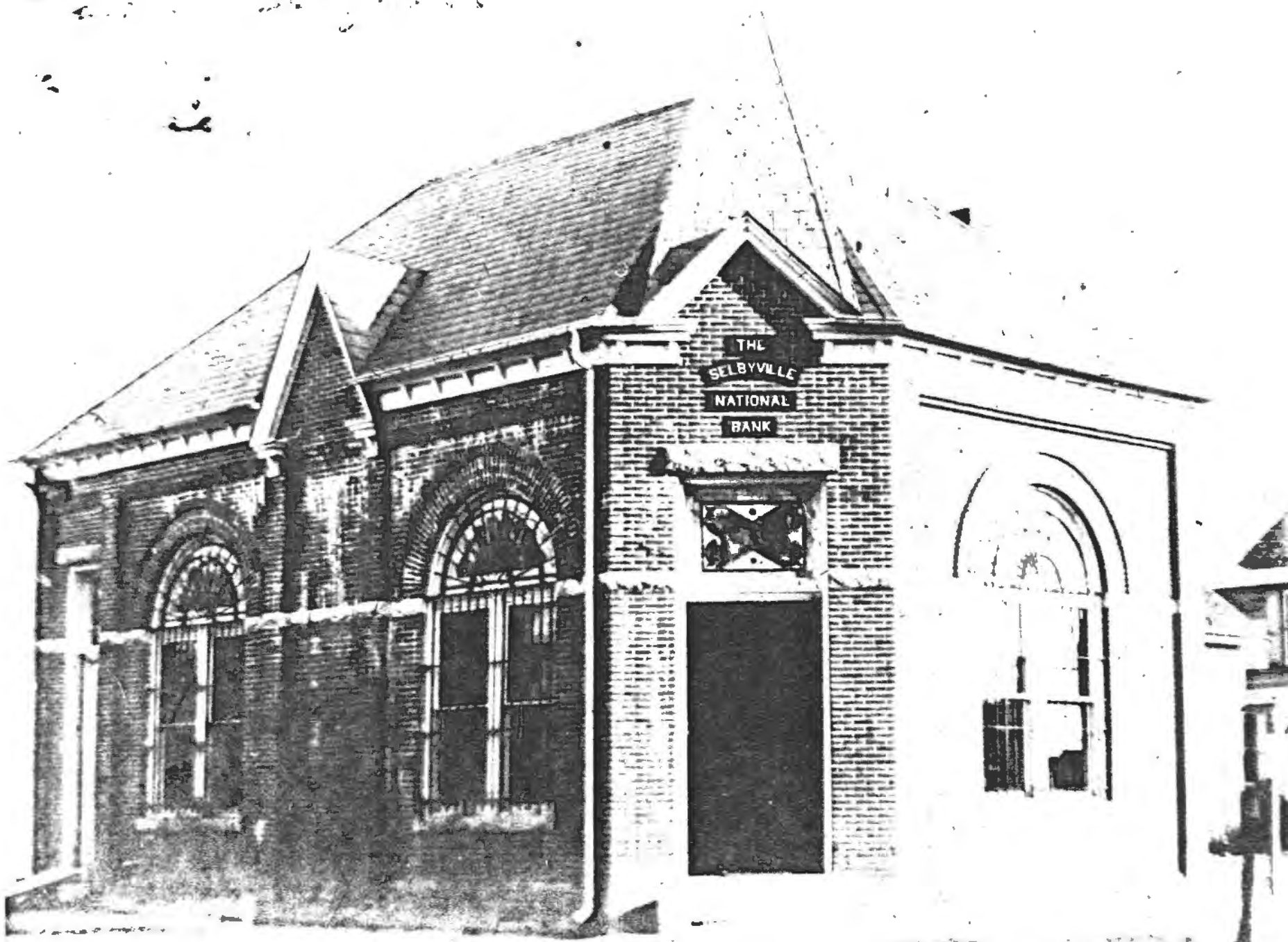
Selbyville School Classes  
1st Town School - Late W.T. Hudson's store.



SELBYVILLE SCHOOL CLASSES (1st TOWN SCHOOL)

(LATE) W.T. HUDSON'S STORE.

W. T. Hudson  
Selbyville, Mo.  
1880-1885



*Dorothy H. Pepper*



FENWICK ISLAND LIGHTHOUSE,  
FENWICK ISLAND, DELAWARE

1878

Dorothea H. Pepper





FENWICK'S ISLAND LIGHTHOUSE, FENWICK'S CITY, DEL.

1898

# Local chapter of small folks' group helps them cope in land of giants

By NANCY E. LYNCH  
Special to Delmarva Crossroads

**SELBYVILLE** — The reunion, pervasive with a sense of well-being, included swapping jokes, ruminating over the past and trading one-liners.

Bill Hutt Hudson, Dick Mowry and Charlie Eyler visited through the afternoon, a comfortable fraternity fueled by their common genetic misfire.

The trio is bound by size — or the lack of it. None is taller than 54 inches. As dwarfs, they have to think big in a world of "giants" but coping is their watchword and stature on a physical plane is secondary.

This get-together was at Hudson's house in Selbyville, but they meet frequently throughout the year with their wives — Hudson is the lone bachelor — and scores of others at chapter and district meetings of Little People of America, a 4,000-member national organization of persons 4-feet, 10 inches tall or less.

"We take life as it is, honey," quips Hudson, 55, the subject of a Morning News interview in 1973. "What else are we gonna do? We have advantages and we have disadvantages."

To an individual of average height, for example, light switches, pay phones and elevators are commonplace conveniences. To a little or small person, as dwarfs and midgets prefer to be called, these "conveniences" are virtually unreachable.

"We don't use the word 'handicapped' but if you're small and you're in an elevator and want to go to the 16th floor, you're not



Staff photo by Susan L. Gregg

Left, Bill Hudson of Selbyville tends his garden from his wheelchair; Pat Mowry of Seaford, at right, hangs clothes on her five-foot clothesline.

going to get there unless someone helps you because you can't reach the button," says Eyler, 56, an articulate and balding Hagerstown, Md., accountant.

He claims a long-term spinal condition has lopped four inches off his one-time height of 4 feet 10 inches. "I've learned to live with certain restrictions," he adds without rancor.

And though his back is stooped, Eyler walks freely. Hudson, two inches shorter, heavier and beset with malady, has been sidelined — but no less active — in recent

years and takes comfort in his wheelchair. "I'm on my sixth set of wheels," he teases. "But if you really want to know what it's like being small, try doing everything on your knees."

Mowry, 42, 50 inches tall, navigates with the help of two canes. He and his wife Pat, an inch shorter, live outside Seaford and will celebrate their first anniversary in September.

Though physically limited, most little people are fully productive and buoyantly positive. Ingenuity, they have discovered, counters

most height disadvantages.

Folding metal extenders that fit in pockets or handbags often assist the little person's limited reach. Hudson carries an old milk crate in his car — fitted with extension pedals — as a handy aid.

"We're as independent as you'll find," says Eyler, once national treasurer of LPA, founded 25 years ago in Reno by Hollywood's pint-size Billy Barty as a social organization for little people.

LPA today, Eyler believes, is more than a bustle of social activ-

See LEARNING, Page 4

D. H. Pepper

7-21-1982

D. M. Pepper



Staff photo by Susan L. Gregg

Charles and Louise Eyer are two active little people who get a lot out of being members of Little People of America.

# Learning to live in a big world

Continued from Page 1

ity. He sees the support group as an emotional backstop for the thousands of Americans who must view the world from their special perspective.

"One of the purposes of LPA is to help the little person adjust to the outside world as opposed to looking for help within the home. So many little people were overprotected as children by their parents," Eyer says.

LPA, he explains, is divided into 12 districts across the country. Districts are farther divided into chapters. "We're in District 3 — North and South Carolina, Virginia, Maryland, Delaware and Washington." Eyer is secretary-treasurer of the Delmarva Chapter — Delaware, Maryland, Washington and parts of Virginia — and his wife Louise is president. Together, they founded the chapter and have rotated offices. The Mowrys recently hosted a chapter meeting in Seaford.

Annual membership in LPA is \$10 for an individual, \$15 for a family and \$7.50 for those 12 and under — "little little people." LPA has a height ceiling of 58 inches for membership. "The average height is about 4 feet," Eyer says.

## Little people get together to give one another support

He and some fellow members were instrumental in 1968 in organizing the LPA Foundation whose purpose, he says, "is to raise funds and solicit money on a tax-free basis. Providing scholarships and money for medical research are the largest part of the foundation's work."

Eyer calls the foundation a "sister" organization to LPA and says it has been of tremendous value to little people. "We also assist married couples who are unable to have children of their own to adopt. Frequently, an average-size person with a little person is not able to cope with the child's handicap so they put it up for adoption. What's more fitting than for little people to adopt a little child?"

LPA and the foundation encompass many dimensions of the little person's life. Many members, including Eyer and Mowry, met their spouses at LPA functions. Surprisingly, for a lot of people, going to their first LPA gathering is difficult.

"I guess I was self-conscious — I

belonged to LPA quite a while before I ever went to the meetings," acknowledges Hudson. "But when I finally went, it was great. Once you go, then you go all the time."

"That first meeting is a great experience — you can look eye to eye when you're talking with someone," agrees Mowry. "And no one calls you shorty," Eyer adds.

"You've got to realize the only way you're going to make a go of things is to sell yourself and you can't sell yourself unless you have something to sell," Eyer continues. "In LPA, we've got lawyers, dental technicians, a judge in North Carolina and in Texas one of our LPA members is running for Congress."

Eyer has logged 28 years with Brethren Mutual Insurance in Hagerstown, is now assistant secretary-treasurer of the company and has seven people working for him. He's also secretary of the Hagerstown Lions Club. His wife has been a civilian employee of the Navy for 29 years.

Mowry has a full-time job rewiring motors for a Seaford electric company. Hudson, the only child of a blacksmith, used to work for the Selbyville weekly newspaper. He's had to ease away from full-time work but tills a garden in his wheelchair and scours the countryside for recyclable aluminum cans.

"For the majority of us, our parents were normal size — there's no pattern, really, to why some of us are small. Johns Hopkins has identified 85-100 different types of dwarfs and they say it's all genetic," Eyer says. "Within our chapter we have a little little person whose father is 6-feet, five inches tall and whose mother is tall. This child is number eight of nine kids and just turned out small. On the other hand, we have two little people who married and have average size children."

LPA in April hosted its first international conference in Washington to extend the sense of community to little people in other countries. "We're proud of LPA," Eyer says, "and of what we're doing. Our ultimate, I guess, is to predict a genetic match before conception and someday put LPA out of business."

7-21-1982

MAIN STREET NORTH AND BRIDGE, SELBYVILLE, DEL.

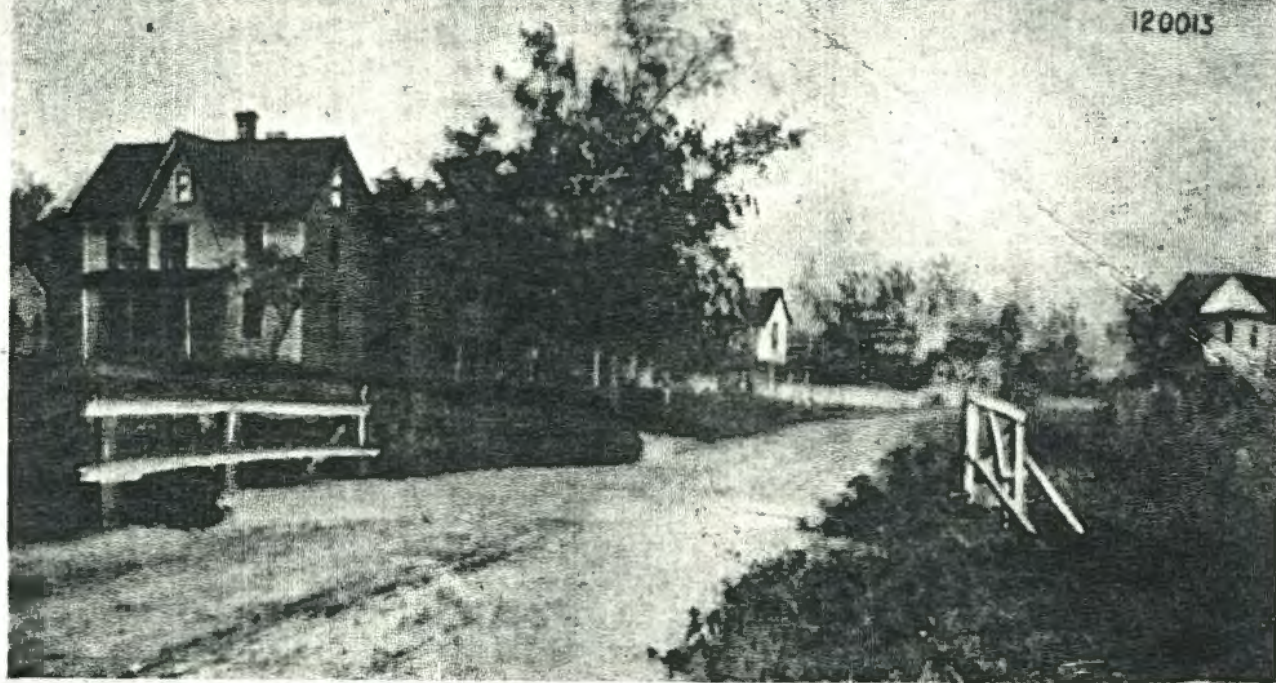
120013



Caleb Murray ~~Stampler~~ & Julia Anne Evans Simpler's  
Home 1890.

MAIN STREET NORTH AND BRIDGE, SELBYVILLE, DEL.

120013

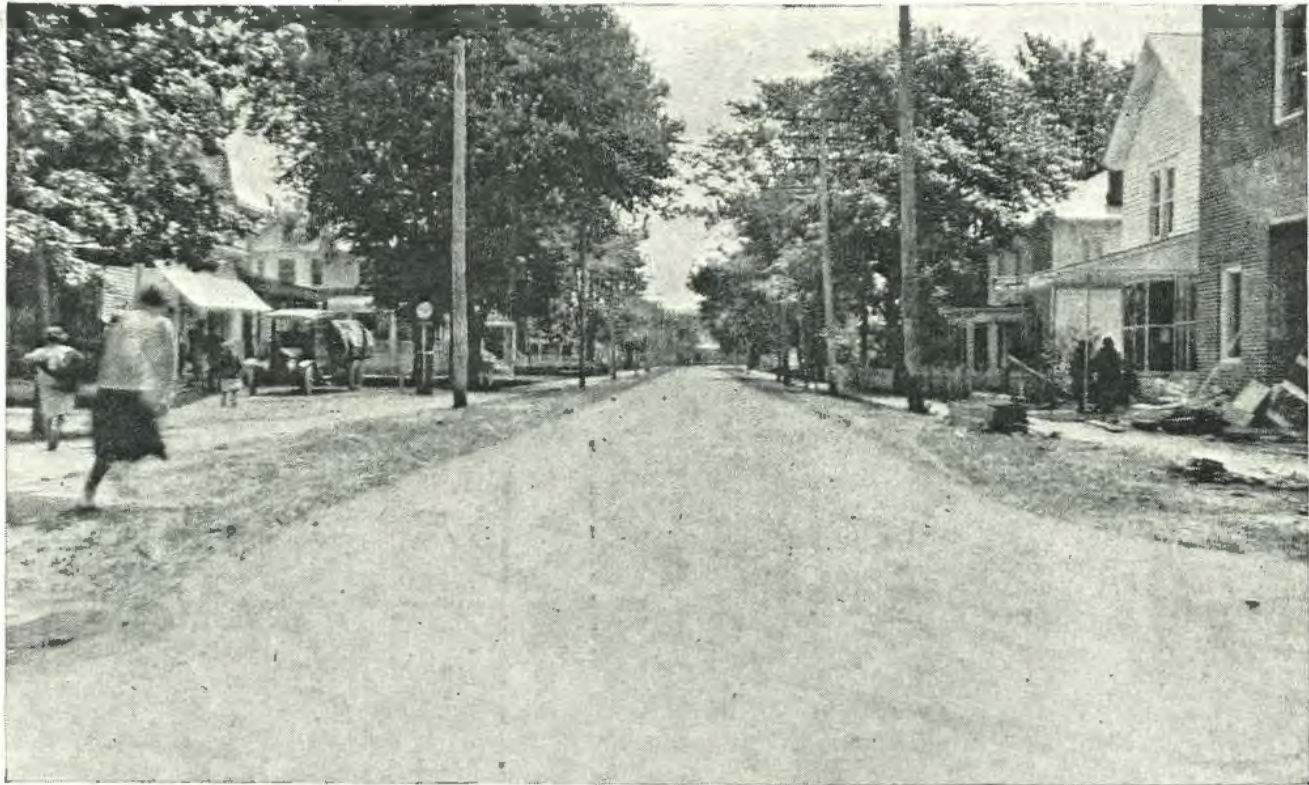


Julia Ann Evans S. & Caleb Murray Simple's home. 1890

Dorothy Williams Lepper

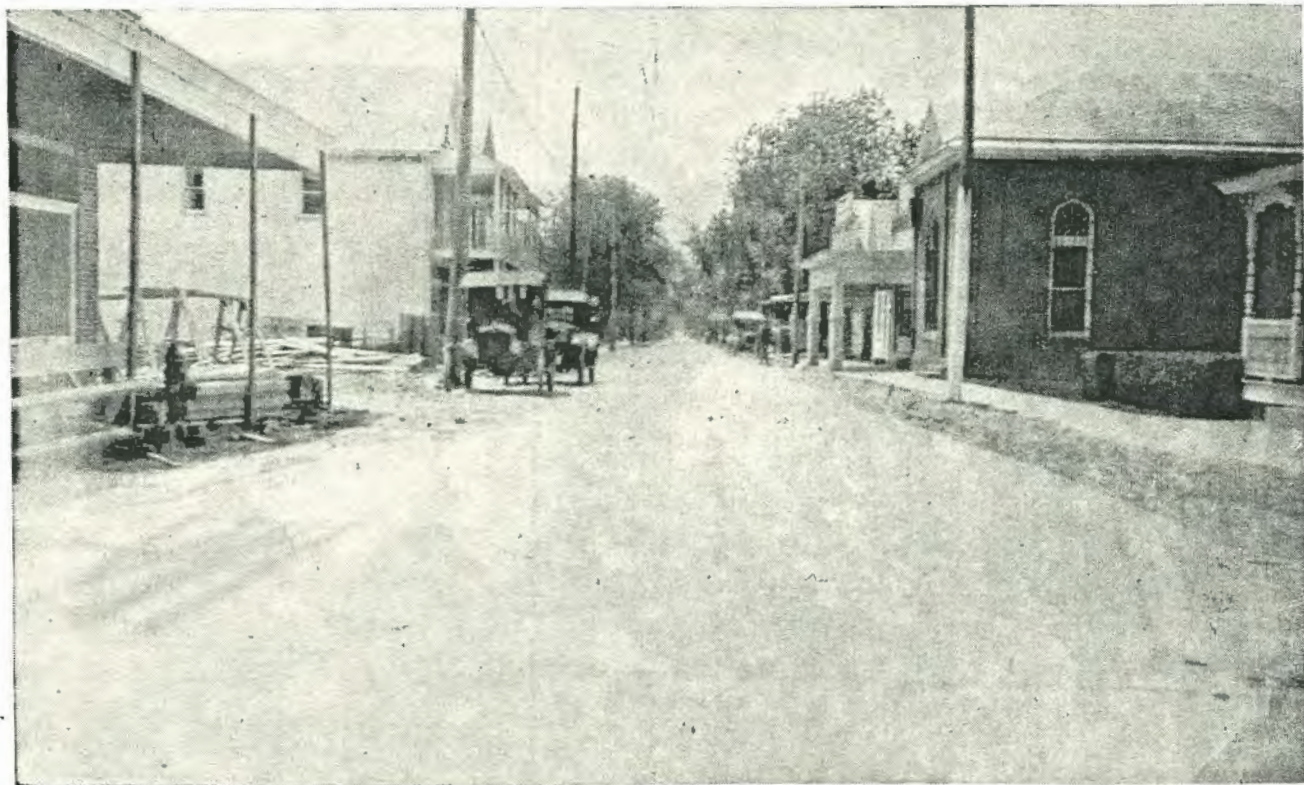
Recent Addition, Walnut St., Selbyville, Del.





Main Street Looking South, Selbyville, Del.

Dorothy H. Peffer



Church Street Looking West, Selbyville, Del.

1924

Dorothy H. Pepper





Church Street and DuPont Road.

1924

Dorothy W. Pepper



Duke Street Looking West, Selbyville, Del.

1924

Dorothy W. Pepper

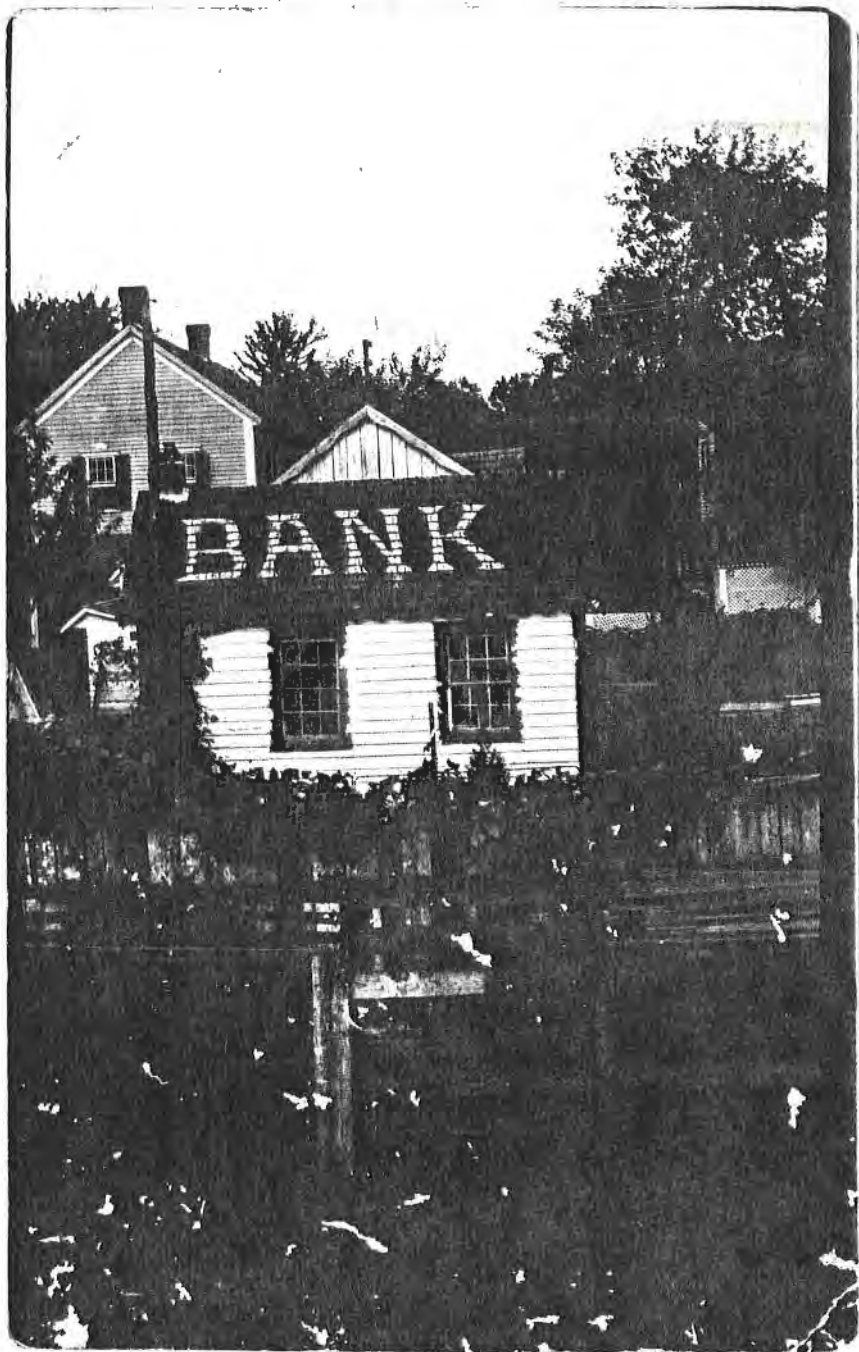


Main Street Looking North, Selbyville Del.

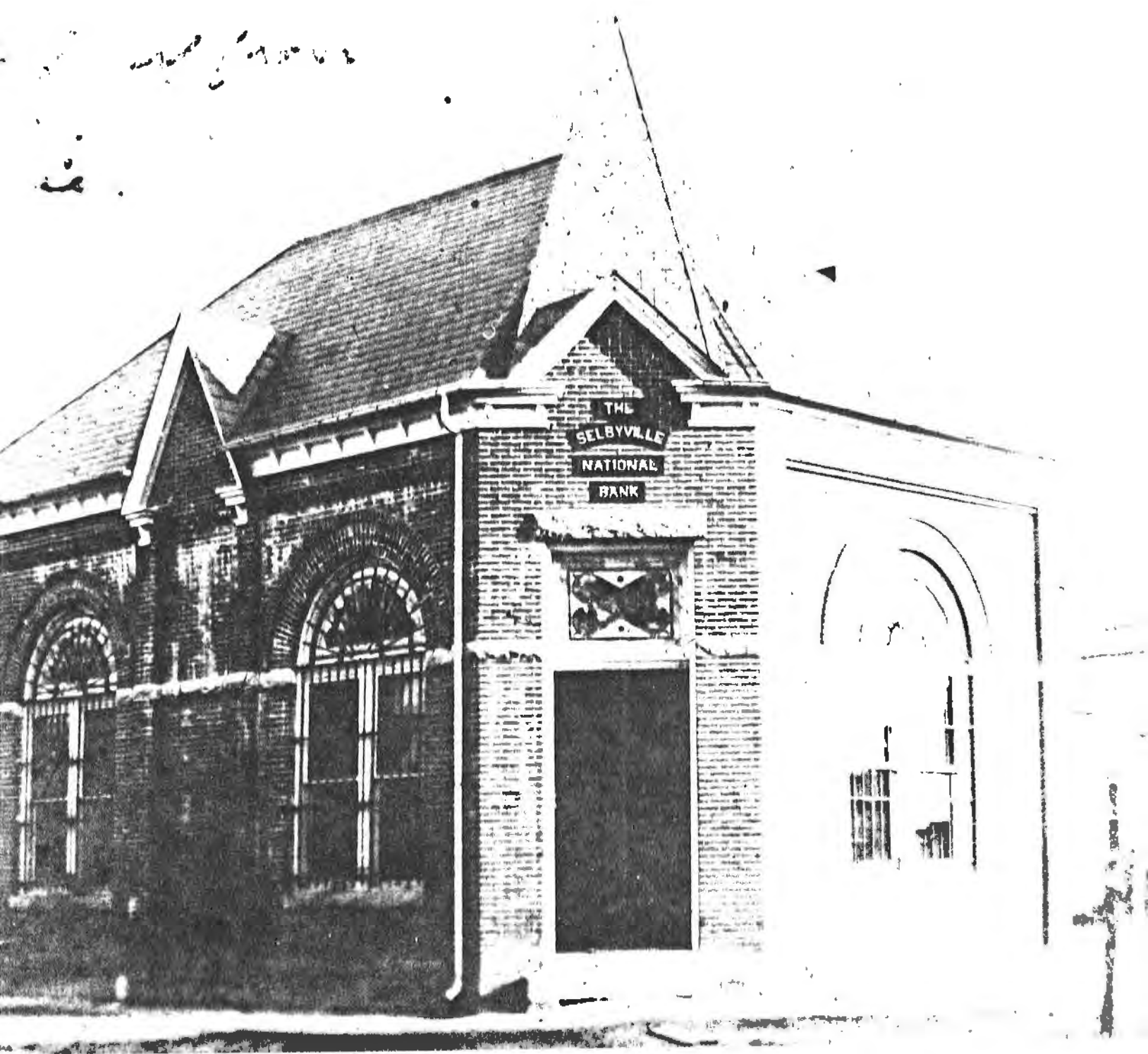
Dorothy H. Pepper

1924

1st Baltimore Trust Co.  
Selbyville, Del. 1903



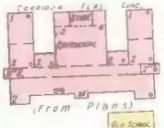
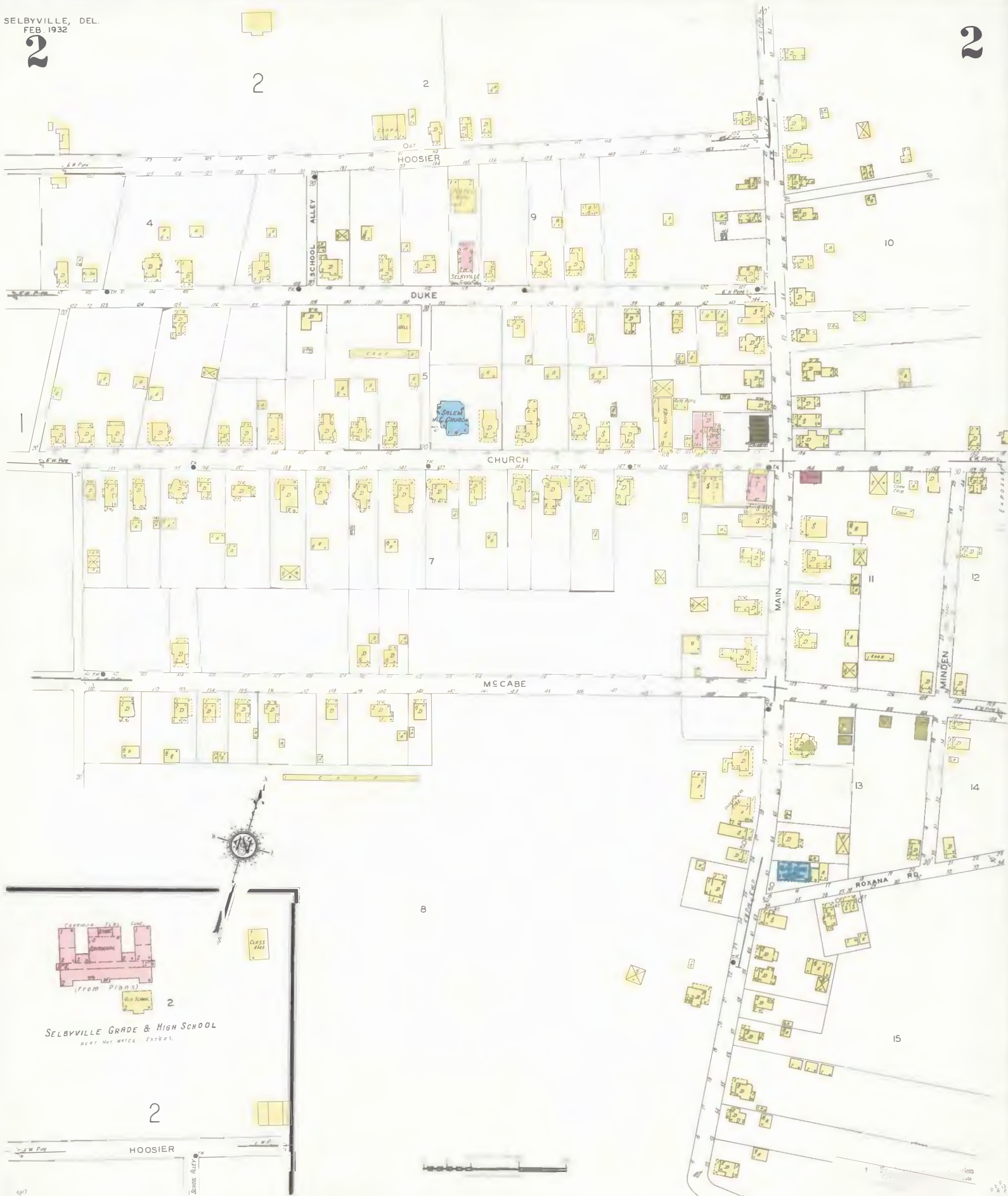
Dorothy H. Pepper



THE  
SELBYVILLE  
NATIONAL  
BANK



*The Building That Has Served The Community Since 1903*

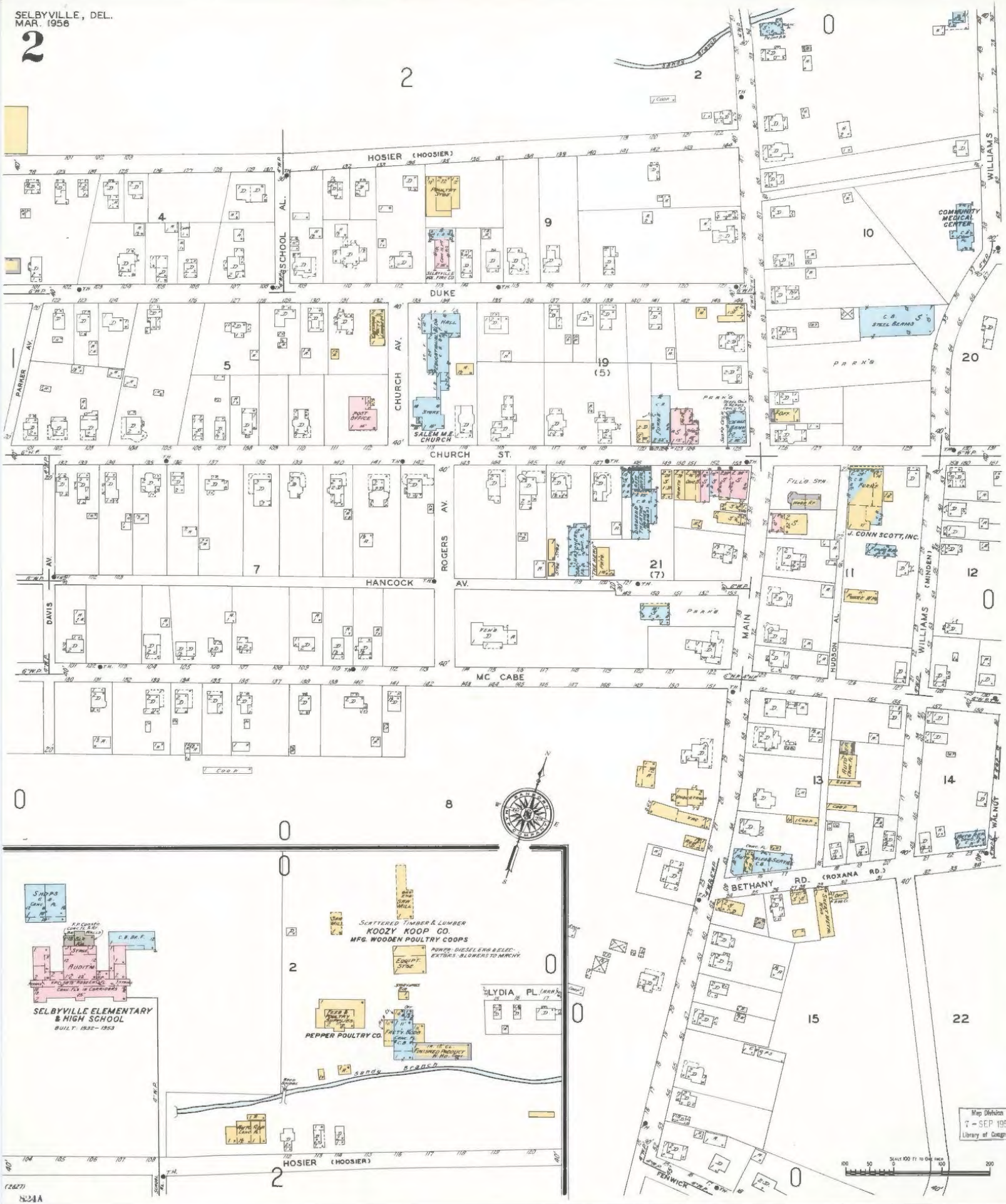


SELBYVILLE GRADE & HIGH SCHOOL  
HEAT HOT WATER EXTERES.

2

2

2



S. J. P. CO.  
 F. J. P. CO.  
 C. B. B. F.  
 AUDITING  
 SELBYVILLE ELEMENTARY & HIGH SCHOOL  
 BUILT 1932-1933

SCATTERED TIMBER & LUMBER  
 KOOZY KOOP CO.  
 MFG. WOODEN POULTRY COOPS  
 PEPPER POULTRY CO.  
 EDW. PT. STONE  
 LYDIA PL. (HOBBS)  
 POWER, DIESEL ENGR & ELEC.  
 EXTENS. BLOWERS TO MACHIN.

Map Division  
7 - SEP 1956  
Library of Congress

00 50 100 150 200  
SCALE 100 FT TO ONE INCH

(2627)  
N231A



Amount received for School  
District 527108.

From State 8000 400

From - 1500

To Bal. due Dist. 2784

13,078 4

To Bal due Dist \$9.80

Audited and Found Correct

ALL 1905

Geo. H. Dick

#80178

#13078.4

Amount paid out for School  
District 527108

Starch. Selgins 11 00

McLair & Wain 10 42

J. J. Thomas 19 46

G. V. Wierwille 4 15

Eric J. Inman 3 9

Sh... Bros. 1 55

R. W. Hill (carpenter) 8 75

L. C. Murray (mason) 50

Dr. Math (doctor)

P. B. Holloway (carpenter) 8 75

G. B. McCloy (plumber)

on report of 1904 75

Telephone 25

Telephone 45

W. S. Beard (carpenter) 8 13

Ira Hamblin (carpenter)

check 2 15

Journalist Bros 76 42

Wood & Timber

R. W. Hill 75

J. H. ... 50

Opus 8 10

D. S. Williams

(wood) 7 50

Commissioner ~~to~~

Ira Hamblin

for affidavit 25

Mary Handy 7 12

for clearing building 3 50

ably with ... 27 53 2

100

17703 2

To Bal due Dist 22 68

wood &c #13078.4



	202 94
✓ Sussex Journal	290 ✓
✓ J. Masur	25 ✓
✓ J. H. & Geo. E. Long	100 ✓
✓ Walter Long	400 ✓
✓ Russell Hill	400 ✓
✓ "	200 ✓
✓ E. M. Baker, Prin.	351 ✓
✓ Effa Bladen	210 ✓
✓ Eva Davis	210 ✓
✓ Flossie D. Hearne	210 ✓
✓ W. A. Gump	50 ✓
Affidavits	9.00 ✓
McCall & Davis fuel & stone	45.52 ✓
Attendance on Aug. 9th.	1.24 ✓
	1296.87

Audited and Found Correct ✓ 59

AUG 21 1906

*Geo. H. Dick*  
AUDITOR.

32.50  
 40.52  
 -----  
 73.02

Selbyville Pub. School in

1916

Oct. 16 To state div. 702 63  
 Sept 19 " Rent. for nov mo. 142 53  
 1907 " " from nov mo. 22  
 from other sources 455 52  
 To tax 400  
1312 68

1312 68



to with C. D. Baker

dr.

Bal. due clerk last settlement 124  
 J. J. Masure ✓ 690  
 G. P. Townsend ✓ 50  
 " ✓ 40  
 " ✓ 25  
 " ✓ 85  
 " ✓ 75  
 " ✓ 90  
 " ✓ 45  
 " ✓ 45  
 " ✓ 55  
 " ✓ 85  
 J. M. Hudson ✓ 30  
 " ✓ 50  
 " ✓ 50  
 " ✓ 25  
 Mary Handy ✓ 200  
 A. Parker ✓ 310  
 " ✓ 60  
 " ✓ 100  
 Julius E. Townsend ✓ 200  
 J. H. Andrews Jr. ✓ 1  
 B. C. Andrews ✓ 3  
 " ✓ 4  
 " ✓ 4  
 " ✓ 4  
 Russell Hill ✓ 4 25  
 " ✓ 4  
 " ✓ 4  
 D. C. Williams ✓ 6  
 Townsend Mrs. ✓ 4 50  
 J. J. Masure ✓ 1 85  
 G. F. Webb (Ins) ✓ 3 74

68 68

	68	68
Mrs. Burton	v	50
J.J. Rogers	v	175
L.C. Murray	v	40
Anna Harrison	v	25
Hattie Handy	v	50
W.R. Long	v	125
Affidavit	v	50
Clara H. Haddaway	v	225
E.T. Davis	v	225
W.A. Gump	v	300
W.T. Pettyman	v	450
Jr. L. Cullum	v	250
McCook Davis	v	1184
"	v	1264
Settlement with Auditor		220
		130301
Balance	-	987
		131268
		130081



Audited June 29<sup>th</sup> 1907  
and found correct.

A. B. B. B.  
J. H. H. H.  
C. F. F. F.

E. V. Baker in of 1871  
1907-08

Dr.

To bal. last A/c 967  
State div. 78770  
Tax 500

1297.37

Audited and Found Correct

AUG 28 1908

Thomas C. Rice  
AUDITOR OF ACCOUNTS

Income Rec. School.

W. P. Williamson	336	✓
Frank Simpson	75	✓
Do.	9	✓
Clifford Simpson	280	✓
Lelara Hallaway	210	✓
Eva Davis	210	✓
Clifford Simpson	50	✓
L. O. Long	30	✓
Lee Stevens	122	✓
Jamieson Bros.	860	✓
Hill & Hallaway	280	✓
A. Parker	150	✓
Jno. Hildesaid	100	✓
A. Parker	275	✓
P. B. Bunting	15	✓
Adms. Ex. Co.	30	✓
	60	✓
	85	✓
	45	✓
	80	✓
	50	✓
	30	✓
	55	✓
	140	✓
	45	✓
	90	✓
	60	✓

Reserve Hill	4	✓
"	525	✓
"	500	✓
"	560	✓
"	500	✓
"	500	✓
"	500	✓

D. Williams	1600	✓
W. P. Long	660	✓
S. Johnson	4	✓
E. V. Baker	1	✓
W. G. Stewart	2	✓
W. G. Williams	3187	✓
A. Parker	25	✓
E. V. Baker	400	✓
Jno. Hildesaid	150	✓
"	300	✓
Irma Cassius	900	✓
School Supply Co.	25	✓
Hess Co. Martins	361	✓
J. A. Cassius	1124	✓
Dittus with Auditor	220	✓
Balance	1648	✓

1297.37

Dr.

E. W. Baker CLK in

Bal forward 11648  
 Rent (School) 2  
 From outside Distos 1537  
 " " " 1908 75  
 To Tax for School 600  
 " " " Building 250  
 " State Dir. 74285

Audited and Found Correct

SEP 1 1909

F. F. Clark  
AUDITOR OF ACCOUNTS

Per Witt School Dist #325708

Cr.  
 4/2/09 Lelief Sumpster 420  
 " W. R. Zusto 315  
 Eva Doucis 290  
 Helen Haverway 295  
 E. W. Murray 345  
 J. J. Janssens 3<sup>rd</sup> 62  
 " " 63  
 J. W. Hudson 100  
 " " 75  
 Lee Stevens 172  
 J. H. Harty 50  
 Lee Stevens 45  
 J. Murray 250  
 J. W. Anderson 325  
 " " 500  
 " " 500  
 A. Parker 75  
 " " 150  
 " " 25  
 " " 25  
 W. F. Long Jr. 375  
 E. W. Baker 475  
 Mary Lewis 200  
 W. R. Zusto 25  
 Linn Zusto 100  
 Wm. Derickson 200  
 C. P. Janssens 29  
 Wm. Hudson 400  
 J. J. Janssens 100  
 J. J. Janssens 1000  
 E. W. Murray 349  
 Cass, Ex Co. 65  
 " " 212  
 " " 55  
 " " 80  
 " " 110  
 P. B. W. R. D. 25  
 Lelief Sumpster 80  
 J. J. Janssens 1022  
 M. C. Baker 1741  
 " " 3745  
 Settling with M. C. Baker 124

Sp. of Bal Due Dist 24876

170170

Audited and Found Correct

SEP 1 1909

F. F. Clark  
AUDITOR OF ACCOUNTS

Sept 14

Del on Dr. [unclear]

248 76

Dr.	706 66 ✓
Tax	600 ✓
Rede Tax	250 ✓
Ins	2585 ✓
Bond	3000 ✓
Note	1200 ✓

6031 x 7

A Parker	✓	1
L W Long	✓	1
McLuk rdw is	✓	29 21
A Parker	✓	3 05
E F Reynolds	✓	9 2
Lucke	✓	75
Jno. H. King	✓	6 00
Touche Co.	✓	1 20
Connex. Dep. Co.	✓	1 65
Dr. W. Co.	✓	90
J. J. Brasier	✓	54
King	✓	2 00
at Johnson	✓	1
A. P. Townsend	✓	47
A. Parker	✓	50
Bee Hive	✓	60
Jno Hudson	✓	3 75
G. L. McCabe	✓	10 62
"	✓	8 50
A Parker	✓	5 08
E. F. Reynolds	✓	8 50
Jno Hudson	✓	2 20
J. J. Brasier	✓	2 18
Hardisty	✓	1 00
C. S. Hamblin	✓	1 00
"	✓	2 00
E. W. Mearns	✓	90
Cy. Reynolds	✓	2 50
"	✓	5 00
"	✓	5 00
"	✓	5 00
"	✓	5 00
"	✓	4 50
"	✓	5 00
"	✓	8 50
"	✓	5 50
"	✓	7 50
"	✓	7 00
"	✓	5 00
"	✓	5 00
"	✓	1 73
Expres.	✓	125 60

125 60



ant fund	125 60	✓
E. F. Reynolds Acct.	385	✓
L. A. Isaacs	228	✓
Ethel Meland	37 50	✓
C. Halloway	245	✓
Eva Davis	245	✓
	<u>1266 10</u>	✓

Outgoing Receipts

McCabe & Davis	31 74	✓
M. G. School & Co.	405 09	✓
L. J. Adams	720 77	✓
J. H. Andrews	120	✓
Mussey	20 26	✓
W. D. McCabe	2 05	✓
Baugh & Co.	26 -	✓
L. C. Hudson	2	✓
Geo. M. Lunnell	10 -	✓
W. S. Ryan	4	✓
L. C. Hudson	350	✓
"	73 50	✓
"	51 00	✓
"	54 37	✓
"	93 46	✓
"	180 37	✓
"	45 93	✓
"	103 60	✓
"	106 89	✓
"	73 40	✓
"	57 00	✓
"	64	✓
W. S. Taylor	62 90	✓
B. Moon & Haw Co.	29 69	✓
fund	<u>3488 82</u>	✓

6001 27

Red Oak Street

2386



6053 13

Audited and Found Correct

*S. F. Clark*

AUDITOR OF ACCOUNTS

Prot fund	2488 82
Mussey	810
W. O. McClain	2328
Jno Webb	250
L. M. Simpson	4950
Jno Hudson	100
Boice Mfg Co.	211 84
Dre Ltr Co.	1200 00
"	300 00
"	502 30
"	55
Fraud Davis	75 00
L. C. Wickman	191 00
Settling with Auditor	124
	<u>6053 13</u>
	<del>6053 89</del>

Audited and Found Correct

AUG 20 1910

*S. F. Clark*

AUDITOR OF ACCOUNTS

324 108  
 Guilford Pub.

Ins. Co Lightning	✓	1240
Sale of cobbles	✓	2798
W. J. Hudson	✓	450
Thos. Traders	✓	400
Dividend	✓	901 36
Tax	✓	1060 00
Law	✓	200 00
		<u>2210 24</u>

AUDITED AND FOUND CORRECT

Aug. 3<sup>rd</sup> 1911

THEO. TOWNSEND,  
 AUDITOR OF ACCOUNTS

Schools, 1911

Bal due Trans.	✓	2386	✓
Jos. Wintz Sch.		650 00	✓
Miss Dickman		320 00	✓
Miss Matthews		280 00	✓
Miss McCabe		240 00	✓
Miss Melson		200 00	✓
Expres		66	✓
		70	✓
		50	✓
		57	✓
		58	✓
		45	✓
		45	✓
		45	✓
		60	✓
		1 00	✓
		45	✓
		60	✓
		1 20	✓
		70	✓
		30	✓
Ampt in cobb		5288	✓
		30	✓
		75	✓
Carl G. Parker			✓
J. R. Hudson		1237	✓
Lee Stephens		70	✓
E. H. Hardisty		4 00	✓
Bill Jansard		75	✓
Geo King		88 13	✓
McCabe v. d. av		150	✓
Chas. Hudson		4 00	✓
Wintz		250	✓
Jos. King		3 00	✓
J. Murray		25	✓
C. L. McCabe		50	✓
"		750	✓
D. H. Campbell		11 53	✓
W. D. McCabe		1 75	✓
D. W. Hill Bank		55 00	✓
Emma H. Barton		150 00	✓
A. Parker		50	✓
"		25	✓
Jos Hudson		18 00	✓
"		12 00	✓
"		12 00	✓
Chas. Collins		11 25	✓
J. J. Bowman		30	✓
J. H. Allen		12 00	✓
Jos Hudson		15 00	✓
affidavit		150	✓
auditor		124	✓
Bal due Dist		76	✓
		<u>2210 24</u>	✓

Settling

2210 24  
 10/10/11

School Public Schools  
in ag. with Ed. Baker for  
the school year ending 7/4/1912

9/8/11	From old Bonds	76 v
	From outside pupils	5460 v
	J.H. Law (pasture)	200 v
	J.B.T. McLah - tuition	900 v
	Dividends	81370 v
	Taxes	170000 v
	F.B. Long -	250 v

AUDITED AND FOUND CORRECT

AUG 8 1912

THEO. TOWNSEND,

AUDITOR OF ACCOUNTS.

To Balance Due 4722

262928

Geo. J. Mnty - bal	✓	65000
Miss Mar Hickman	✓	32000
Miss Helen Muthers	✓	28000
Miss Edith Jamieson	✓	24000
Refund Div.	✓	19600
Wash Mtg Co.	✓	112
Carl Parker	✓	200
C.S. Hamblin	✓	50
Bie Haines	✓	866
E.L. Prussell	✓	275
Wash Mtg Co.	✓	150
"	✓	100
"	✓	850
"	✓	100
Wash Mtg Co.	✓	30
"	✓	150
M.R. Long	✓	1000
"	✓	1000
"	✓	1000
"	✓	1000
"	✓	1000
"	✓	1120
G.L. McLah Sr.	✓	820
"	✓	726
Expres.	✓	1035
Freight	✓	200
"	✓	30
"	✓	30
"	✓	544
"	✓	468
G.L. McLah Coal & C.	✓	9278
Dr. L.P. Co.	✓	2473
Dr. T. S. Co.	✓	900
B. & M. H. Co. Po.	✓	531
Hawley	✓	100
Berlin H. Co. Po.	✓	407
"	✓	650
"	✓	1212
Trickett	✓	90
Expres.	✓	450
Access to Bank Int.	✓	274
"	✓	315
"	✓	135
" Note	✓	20000
"	✓	20000
Int. on Bonds	✓	15000
Expres.	✓	50
Sum to	✓	124

AUDITED AND FOUND CORRECT

AUG 8 1912

THEO. TOWNSEND,

AUDITOR OF ACCOUNTS.

262928

Sept 9/11/12 Non residents (state) 3590  
 " " J.B.J. Mc 900  
 " " Thos. Timm 600  
 Tax 1800 00  
 Dividend 829 79 ✓

268069

**AUDITED**  
 AUG 19 1913  
**W. P. PRETTYMAN,**  
 AUDITOR OF ACCOUNTS.

*Found* 268069

Bulford	✓	49 22
Sh. F. Co.	✓	363
McCabe & Davis	✓	18 55
J.H. Andrews Son	✓	210
Geo. J. Harty	✓	183
W.R. Long	✓	2320
J.M. Long	✓	3
Louis Nat Bk, Int.	✓	25 55
"	✓	25 25
Freight Express	✓	1 00
	✓	25
	✓	30
	✓	30
	✓	55
	✓	75
	✓	124
	✓	35
	✓	60
	✓	45
	✓	55
	✓	85
	✓	80
	✓	70
	✓	80
	✓	35
Sally Lewis	✓	12 00
"	✓	4 50
P. Shawee	✓	5 00
"	✓	4
"	✓	13 20
"	✓	3 00
"	✓	3 00
"	✓	3 00
"	✓	6 00
"	✓	6 00
"	✓	6 00
F.D. Campbell	✓	8 00
Louis Lee Co.	✓	6 00
Mr. Evans	✓	6 60
E.J. Hurdley	✓	1 00
G. Morris	✓	9 00
H.M. Mysel	✓	225
D.H. Campbell	✓	27 25
Berlin Sales Co.	✓	17 80
A. Parker	✓	1
"	✓	1 00
Acct found		305 77

Sept

Amtford 268069

Amtford	305 77
N.S. Ryan	✓ 300 ✓
John Hudson	✓ 1980 ✓
J.H. Long	✓ 420 ✓
Dean Rockwell & Co.	✓ 1512 ✓
Insurance	✓ 808 ✓
"	✓ 700 ✓
Lee Stevens	✓ 491 ✓
Mrs. Burton	✓ 15000 ✓
McLain & Davis	✓ 10613 ✓
Dr. Evans	✓ 500 ✓
J.M. Downs	✓ 2500 ✓
N.S. Taylor	✓ 786 ✓
R. White	✓ 500 ✓
Pl. Shawee	✓ 600 ✓
"	608.65 ✓ 300 ✓
"	✓ 500 ✓
"	✓ 300 ✓
"	✓ 300 ✓
Academy	✓ 357 ✓
Exp	✓ 45 ✓
"	✓ 55 ✓
A.N. Jamney	✓ 800 ✓
L.L. Long	✓ 1200 ✓
S.N. Jamney	600 00
Mar Hickman	✓ 360 ✓
John M. ...	✓ 320 ✓
Gov. Davis	✓ 280 ✓
Edith ...	✓ 280 ✓

**AUG 19 1913**  
**W.P. PRETTYMAN,** 50  
**AUDITOR OF ACCOUNTS.** 124

Amt paid on debt 100 00

265318  
 2751  
 268069

268069

790 S. W. 9th St. W. Okla. Sch. for School Year 1913

Bill, dec dist	27 51
State dividend	868 36
Tax	1800 00
From non-residents -	
Lester Lynch	1.50
Whitcomb	4.12
M. N. Gaf. (1912)	9.00
J. B. J. McClure	13.00
M. N. Gaf. 1913	8.00
Paul Simon	8.00

436  
\$ 2 739 49

739 + 9

\$ 2 739 49

AUDITED

AUG 18 1914

W. P. PRETTYMAN,  
AUDITOR OF ACCOUNTS.

Salaries-

S. N. Jamunny	✓	560 00
Mar Hickman	✓	320 00
Eva Davis	✓	280 00
Edith Jamunny	✓	280 00
Sarah Draperford	✓	280 00
Insurance - C. B. McClure	✓	6 70
"	✓	7 78
Janitor - P. Shawnee	✓	97 85
Fuel - J. L. Long	✓	90 15
Exp - Adams & Co.	✓	12 08
Repairs - Dr. L. W. Co.	✓	16 84
Loam mfg Co.	✓	12 10
W. S. Taylor	✓	48 74
B. Morn H. W. Co.	✓	8 41
Incidental McClure & Davis	✓	5 20
"	✓	55 30
J. A. Dawson	✓	25 00
H. Lewis	✓	50 00
L. Deum	✓	2 00
E. L. Brunel	✓	3 50
E. Williams	✓	3 50
H. Stevens	✓	2 75
Hot Dis. Co.	✓	6 25
Berlin Hard Co.	✓	6 00
R. Murray	✓	4 00
E. D. Burton	✓	1 00

Acct Pd. on debt 400 00

Int  
E. M. H. Burton ✓ 150 00  
Loam Nat Bk [ ✓ 23 00  
[ ✓ 25 15  
Set with auditor ✓ 1 24  
Bal 4 45

2739 49

AUDITED

AUG 18 1914

W. P. PRETTYMAN,  
AUDITOR OF ACCOUNTS.

McC Selbyville Pub. Sch. for School year 1913-14

Bill, due dist 27 51  
 State dividend 868 36  
 Tax 1800 00  
 From non-residents -  
 Luctor Lynch 1.50  
 Whitehurst 4.12  
 W.N. Gray (1912) 9.00  
 L.B. J. McClure 13.00  
 W.N. Gray 1913 8.00  
 Paul Linnam 8.00

436 2

\$ 2 739 49

739 49

\$ 2 739 49

AUDITED

AUG 19 1914

W. P. PRETTYMAN,  
AUDITOR OF ACCOUNTS.

Salaries-

S.N. Jamming ✓ 560 00  
 Mac Hickman ✓ 37 00  
 Eva Davis ✓ 280  
 Edith Jamming ✓ 280  
 Sarah Drifindorf ✓ 280

Insurance C. McClure ✓ 670  
 " " ✓ 778

Janitor - P. Shawnee ✓ 97 85

Fuel - J. Long ✓ 90 15

Exp - B. Linn & Co. ✓ 12 08

Repairs - Dr. L. W. Co. ✓ 16 84

Louis Infy Co. ✓ 12 10

W.S. Taylor ✓ 48 74

B. Morn Hdw Co. ✓ 8 41

Incidental McClure & Davis ✓ 520

" " ✓ 5530

J.A. Deans ✓ 25 00

H. Lewis ✓ 50

L. Deans ✓ 2 00

E.L. Brunel ✓ 350

E.W. Williams ✓ 350

H. Stevens ✓ 275

Hot Dis. Co. ✓ 625

Berlin Hdw Co. ✓ 6 00

P. Murray ✓ 4 00

E. D. Burton ✓ 1 00

Acct Pd. on debt 400 00

mit Eamon H. Burton ✓ 150

Louis Nat Bk { ✓ 23 00

{ ✓ 25 85

Set. with auditor ✓ 1 24

Paul 4 45

2739 49

AUDITED

AUG 19 1914

W. P. PRETTYMAN,  
AUDITOR OF ACCOUNTS.




Mc Selbyville Public School for School year 1914-15.

Bal. fwd 4 45  
 From Non-Residents  
 Walter Bunting (1913-14) \$ 8.00  
 4/27/15 Jan McCabe 1914-15 13.00 21 00

10/10/14 State Dividend 869 34  
 Tax 1800 00

Total Committed 3036  
 AUDITED, 2725 15

AUG 28 1915

  
 AUDITOR OF ACCOUNTS.

Salaries.

M.A. Robinson 650 00  
 Max Heckman 320 00  
 Eva Davis 280 00  
 Estelle Lammend 280 00  
 Helen Matthews 280 00

Insurance C.L. McCabe 630  
 " 760

Fuel Lee Stevens 130 00  
 " 750

A.L. Hudson 11 00

Janitor P. Shavell 121 70

Express P.B. MRR. Co. 769

Repairs Berlin Hdw Co. 68 20  
 " 48

Carson 592

Thompson 2725

Interest Emma Burton 150 00  
 State Nat Bank 2263

" 1278

Incidentals Whitaker 125  
 Robinson 106

W.S. Ryan 25

B. Hill Hdw. Co. 91

R.W. Hill 387

A. Parker 50

Berlin Hdw Co. 200

W.S. Taylor 675

Berlin Hdw Co. 800

C. Hill, murr Co. 640

B.N. Lammend 37

Express 100

McCabe & Davis 1116

S.P. Co. 365

Misc L. Co. 300

M.A. Robinson 335

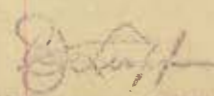
C.S. Hamblin 200

Paid on orbit 300 00

AUDITED, *by [unclear]*

2725 15

AUG 28 1915

  
 AUDITOR OF ACCOUNTS.

of Subville Public School Year 1915-16

10/1915 State Dividend ✓ 789 33  
 Tax " 1800 00  
 Rent " 500  
 Non-residents  
 E.H. Godwin \$25  
 Thos. Simmons 9. 34 00  
 Bal due Treas. 4277

AUDITED,

AUG 30 1916

*Stuff*  
 AUD R OF ACCOUNTS

2671 10

Due Committee 3036 ✓

M.G. Robinson 644 40 ✓

Ev. Hatter 405 ✓

Eva Davis 280 ✓

M. Raymond 315 ✓

L. Long 250 ✓

C.L. McCabe 747 ✓

Ins. " 610 ✓

Lee Stevens 1022 ✓

Wm Long 5 ✓

M.L. Lee Co. 12 ✓

F.B. Long 8 ✓

L.F. Hallaway 8 ✓

P. Shawell 17025 ✓

Exp 567 ✓

Repairs P.H. Hallaway 305 ✓

W.D. Hudson 250 ✓

S. Hill Hdw Co. 817 ✓

M.S. Taylor 3050 ✓

C.S. Heubler 100 ✓

" 50 ✓

" 50 ✓

Lois Mfg Co. 250 ✓

Berlin advance 125 ✓

W Long 2750 ✓

McCah Davis 100 ✓

S. Hill Hdw Co. 805 ✓

W.D. Hudson 103 ✓

Joe Murray 50 ✓

M.G. Robinson 80 ✓

Lois Mfg Co. Pagan 155 ✓

Wm Mizell 700 ✓

Ins. & Co. 691 ✓

A. Book Co. 512 ✓

Ins. Co. 190 ✓

Sp. Hardisty 100 ✓

Int. Interest 1256 ✓

" 510 ✓

" 15000 ✓

Paid on debt 20000 ✓

Settling with auditor 124 ✓

AUDITED,

AUG 30 1916

*Stuff*  
 AUD R OF ACCOUNTS

2671 10

1917-18

	Bal. due Dist.	184 75.
18/10/17	from State - non-residents	66 60.
Oct	State Dividend	796 10.
May	Non-residents	110 00.
	Rent - R.H.H.	4 00.
	Tax	2300 00.

1918  
**AUDITED**  
 J. G. [unclear]

3461 45

	D.A. Peatry	1000 00.
	Sadie Johnson	157 50.
	Mac Hickman	264 00.
	Nellie S. Collins	90 00.
	Leta Willey	150 00.
Delinious	Birda Long	123 75.
	Martha Rogers	400 00.
	Leticia Long	360 00.
Mrs.	G.L. McClain Insurance	5 70.
	" " "	7 06.
	Lee Stearns (fuel)	206 25.
	Q.S. H. Affidavits	1 50.
	Loire Mfg Co.	3 35.
	R. Hill	20 10.
	Loire Hardware	19 60.
	R. Hill	4 65.
Repair	Loire Mfg Co.	38 14.
	G. Lewis	1 00.
	H. Lewis	3 00.
	Ed. Ryan	3 50.
	Richardson Bros.	63 40.
	Express 1st	14 25.
Mkt.	Burton, Mkt	150 00.
	P. Shawnee	97 50.
	J.B. Long	5 50.
	G.L. McClain	38 89.
	L.C. Dunn	15 00.
	W.S.H.	1 00.
	Dr. L. Ice Co.	180.
	L. Conway	75.
	W.C. Long	1 50.
	A. Brook Co.	1 30.
	<u>6249 97</u>	

3461 45

W. P. Co.	175.
F. C. Murray	300.
J. Long	350.
D. A. Petty	3621.
J. H. Hudson	780.
Lois Haw Co.	330.
M. Brady Co.	606.
A. Parker	150.
Auditor	100.

3249 97

Bal	147 36
-----	--------

1918 3461 45  
**AUDITED**  
 H. H. Mac

Bal due Dist	147 36
Tax	4300 00
State Dis.	1646 24
May. Res.	185 00

4279 54

	Dr. Peary	1187 50
	Miss Lord	703 13 ✓
	" Steele	590 63 ✓
	" Long	521 25 ✓
	Mrs. Miller	508 75 ✓
	Miss Mathews	665 00 ✓
	Hickman	14 85 ✓
	Briggs	16 87 ✓
	Long	40 50 ✓
	"	45 00 ✓
	Insurance	550 ✓
	"	676 ✓
	Shawee	124 60 ✓
Coal	Lee Stearns	161 00 ✓
Int	Burton	150 00 ✓
	Dates	200 ✓
	Express	11 94 ✓
	D. Robinson	10 33 ✓
	"	213 90 ✓
	Union Mfg Co.	69 90 ✓
	Black-board	5285 ✓
	Union Hardware Co.	23 64 ✓
	Union Mfg Co.	63 14 ✓
	Richardson	98 49 ✓
	N. Halland	42 65 ✓
	H. Halland	650 ✓
	D. A. Peary	13 68 ✓
	"	45 ✓
	Books	764 ✓
	L. C. Murray	5 ✓
	R. W. Hill	250 ✓
	A. Hudson	50 ✓
	Dr. Peary	251 ✓
	"	3500 ✓
	Jewel	5371 61

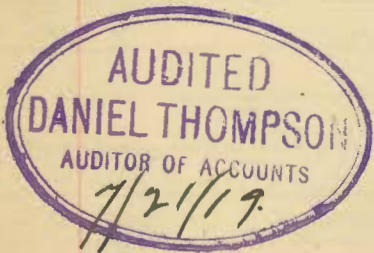
Land

4278.58

Bull Hill Treas.

1171.09

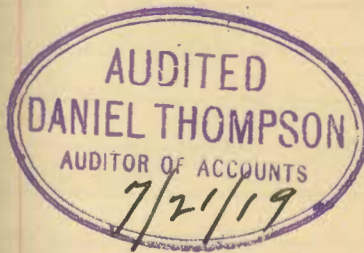
544967



5397.68

Boots	4.50 ✓
Shoes	1.70 ✓
Trunks	1.19 ✓
H. trousers	3.50 ✓
H. overcoat	1.00 ✓
Trk	5.20 ✓
Trunks	1.56 ✓
Postage	1.03 ✓
auditors	3.80 ✓
H. Lewis	1.00 ✓
La. Party	4.90 ✓
M. F. Co.	13.80 ✓
Sm. H. Co.	15.80 ✓
Int. Auditor	1.00 ✓
C. L. McCabe	22.69 ✓

544967



HISTORY  
DELAWARE.

1609—1888.

BY

J. THOMAS SCHARE, A. M., LL. D.,

*Author of "History of Maryland," "History of the City of Philadelphia, Pa.," etc., etc.*

ASSISTED BY A STAFF OF ABLE ASSISTANTS.

IN TWO VOLUMES, ILLUSTRATED.

VOL. II.

PHILADELPHIA:  
L. J. RICHARDS & CO.  
1888.

The Old Sound M. E. Church is one of the oldest of that denomination in Sussex County. Freeborn Garrotson preached in this section for several years, holding services under the branches of a white oak which yet stands about a mile north of the present church, and at the head of Assawoman Bay. Speaking of the meetings held there, he says, in his diary: "The work of the Lord broke out there, the people wept on every side, and after a sermon of three hours seemed fixed to the spot." It is a tradition that he felled the first tree that was used in the erection of the chapel which, with the aid of thirty converts, he built in 1784.

It was of hewed frame, and shingled on sides as well as roof. One acre of ground was purchased, for which twenty shillings were paid. The deed, bearing date of April, 1784, was granted to Trustees James Laws, John Aydelott, Solomon Evans, Arthur Williams, Andrew Williams, Ezekiel William, John Dier, William Powell and John Coe. William Powell was elected clerk. The deed contains the proviso "that the ministers preach no other doctrine than is contained in Rev. John Wesley's notes on the New Testament, and his four volumes of sermons." From the year of its erection until 1806, services were held without interruption. In that year a meeting of the trustees was held, at which it was decided to adjourn *sine die*. This action was taken on account of the lack of money necessary to repair the chapel, which had become wholly unfit for use. In 1807, after ten days' notice, the congregation again convened, when the name was changed to Williams' Chapel. The trustees elected were Arthur Williams, Ezekiel Williams, William Rickards, William Powell, Thomas Evans, Robert Wildgoose and Isaac Rogers. The old church was repaired and again occupied. In 1823 it was again in need of repairs, and an appeal for subscriptions was made to "all charitable and well-meaning persons, friendly to the religion of Christ." A year later it was rebuilt, and services were held until 1876. At that time it was abandoned, and a new church erected about a mile southeast of the original site. It is yet occupied, and services are being held regularly.

Long's Chapel, M. E. (colored), was built in 1888. The land was donated by James Bishop to Trustees James Williams, George Bingle, Handy Selby, Arnold Purnell and John Hutchins. The chapel has now a membership of thirty persons.

SELBYVILLE.—This thriving little town lies near the line dividing Delaware from Maryland. While its territory was still under Maryland jurisdiction, one Matthew McCabe was a resident in the vicinity and a blacksmith. His principal business was the forging of plow-shares. He served as a soldier through the Revolution, and died of the small-pox in after years. He lived upon a tract of thirty acres called "Long Lot," which, in 1818, was resurveyed to Arthur McCabe. A year previous to that time Joseph Jena and Isaiah Long erected a saw-mill upon

the Run at the place now known as Selby's Mill-pond, which they conducted for many years and sold to Samuel Selby, who, in 1842, moved a store to the place from over in Maryland. Selby sold his store to William S. McCabe, the present owner, who, in 1850, built another store, which ranks third in the commercial interest of Sussex County.

Other stores were opened from time to time and have been kept respectively by Stephen Long, Jos. Layton, William G. Davis, John D. McCabe, George W. Ivins and John Poole. In 1879 a saw-mill was moved to Selbyville by Messrs. Parker and Garmon from Wicomico County, Maryland, and three years later removed to Williamsville, where it is now operated. The Selbyville "Steam Saw and Planing Mill," with a daily capacity of eight thousand feet, was erected in 1881, by E. J. Long, J. McNeill and H. Campbell.

W. S. McCabe & Son have erected a steam flour-mill, with a capacity of thirty barrels a day. In connection with this there is an elevator to facilitate the shipment of the surplus grain.

The post-office was established in 1845, with Josiah Selby as postmaster. He was succeeded by the following persons: Isaac McCabe, W. S. McCabe, E. M. McCabe, W. G. Davis, John W. Poole and the present official, Miss Annie Dukes.

Salem M. E. Church, at Selbyville, was organized by a congregation which first worshipped in the residence of David Murray. The first church building was erected about 1812 in a pine thicket near Sandy Branch, and was also used as a school house. It was occupied until 1847, when the second church was built. This gave way in 1884 to the present building, in the corner-stone of which are sealed the histories of its predecessors.

There are two public burial-grounds at the town, in which interments still take place. The oldest is the "Joseph Long," the first interment having taken place over a hundred years ago. The "Hickory Tree Graveyard" derives its name from the fact that the remains of Mary Campbell, oldest daughter of Benjamin, and the first person interred, lie under a hickory tree, which is still standing.

*Wissahickon Tribe, I. O. E. M., No. 20*, was instituted February 12, 1884, with the following charter members: W. J. Rankin, I. W. Long, W. R. McCabe, W. M. Morris, J. W. McNeill, C. S. Hamlin, C. J. Barker, F. P. Harper, E. D. Davis, J. F. Dukes, J. W. Poole, George W. Ivins, D. J. Long, M. L. Watson, Albert Parker, Seth E. Pingler, E. W. Pingler, E. T. Williams, J. W. McCabe, C. W. Murry, W. J. Murry, T. W. B. McNeal, A. W. Murray, A. J. Hudson.

ROXANNA.—This hamlet is situated about four miles northwest of Selbyville. It has had three names, "Dog's Ear Corner," "Centerville" and the present. At the head of the Sound, Joseph Wilgus opened a store in 1794, which he continued until 1801. He also operated a brandy still, to which the fruits of the



# THE CHURCHES OF DELAWARE

by

FRANK R. ZEBLEY

Author of "Along the Brandywine"



*A history, in brief, of the nearly 900 churches  
and former churches in Delaware as  
located by the Author.*

1947

July 26, 1874, with the Revs. J. B. Mann and Wm. F. Talbot in charge. The name "Zion" was chosen to distinguish it from Union Sound Church east of Williamsville. The church was rebuilt in 1921. The schoolhouse, a short distance south of the church was purchased from the State B. of E. on Nov. 22, 1935. It was rebuilt for use as a church-house and was opened on July 1, 1939. Additional land for the cemetery was purchased on April 8, 1942, from Wilmer S. Evans.

**Roxana Pilgrim Holiness Church** was organized after two series of tent-meetings in a nearby grove. The church was built, in 1928, on a plot of land donated, on Nov. 24, 1928, by J. Frank Lynch, for that purpose only. In 1941, when the road in front of the church was widened, the State allowed them damages and moved the church across the road to a new site purchased on May 26, 1941, from Chas. E. Richards. A new wing, containing a Sunday School room and a new tower were added to the church. The Lynch land was returned to him on Aug. 5, 1941. The church was incorporated on June 30, 1942. A new parsonage was built in 1942.

**Christ's Sanctified Holy Church.** This church was incorporated on Aug. 1, 1896, with Chas. H. Lynch, Wm. S. Hickman, Joshua J. Stephens, Abisha D. Cooper and Chas. F. Hudson as trustees. They held their meetings in different member's homes for nine years. On Mar. 17, 1905, Orlando B. Lynch donated a church site on his farm at Long's Ridge. A frame church was then built and occupied. In 1944, the members decided to seek a new site for their activities. The church and lot then came into the possession of Dory Evans who rented the building out as a warehouse.

Christ's Church then held their meetings in a former schoolhouse at Bayard for about eight months. Late in March, 1945, they rented the former Omar M. E. Church from Louis F. Daisey and they are still meeting there.

**Salem Methodist Church (M.E.)** at Selbyville. A Methodist Society was organized, in 1789, in the home of David James Murray, on his farm, one and one-half miles n. e. of Selbyville. This was the birthplace, at a later date, of the Rev. W. L. S. Murray, D.D., prominent in Methodism. The farm is now owned and operated by Joshua L. Murray.

In the spring of 1790, a basket-meeting was held in the grove at Sandy Branch, opposite the present Red Men's Cemetery, at which time 28 persons were converted. A combined church and day-school was then built in the grove. The inside was unfinished, had a fireplace for heat, used light-wood for illumination at night services and the benches were made of slab wood with holes bored in them for inserting legs. The church was incorporated on Feb. 28, 1833. Fifty-two poles of land, were donated on Nov. 2, 1833, by Milburn Murray.

The second church was built in 1849 near Sandy Branch on the land of Zeno Long. He deeded the site for the church to the trustees on May 3, 1849. Tallow candles were used and some of the old ladies would light their pipes from the candles for a "drag" on the way home. There was a gallery for the negroes who would nearly raise the roof with their shouting. In the meantime, the town of Selbyville had sprung up and, in 1883, a third church was built in town. The old church was sold to Mr. Long who used it as a barn. It was in use until about 1935 when it was burned.

In the new church chandeliers holding oil lamps were used. Land was purchased, on May 5, 1886, from Wm. R. McCabe and on June 19, 1895, from



SALEM METHODIST CHURCH, SELBYVILLE  
(Page 308)



ROUND METHODIST CHURCH, NR. WILLIAMSVILLE  
(Page 309)