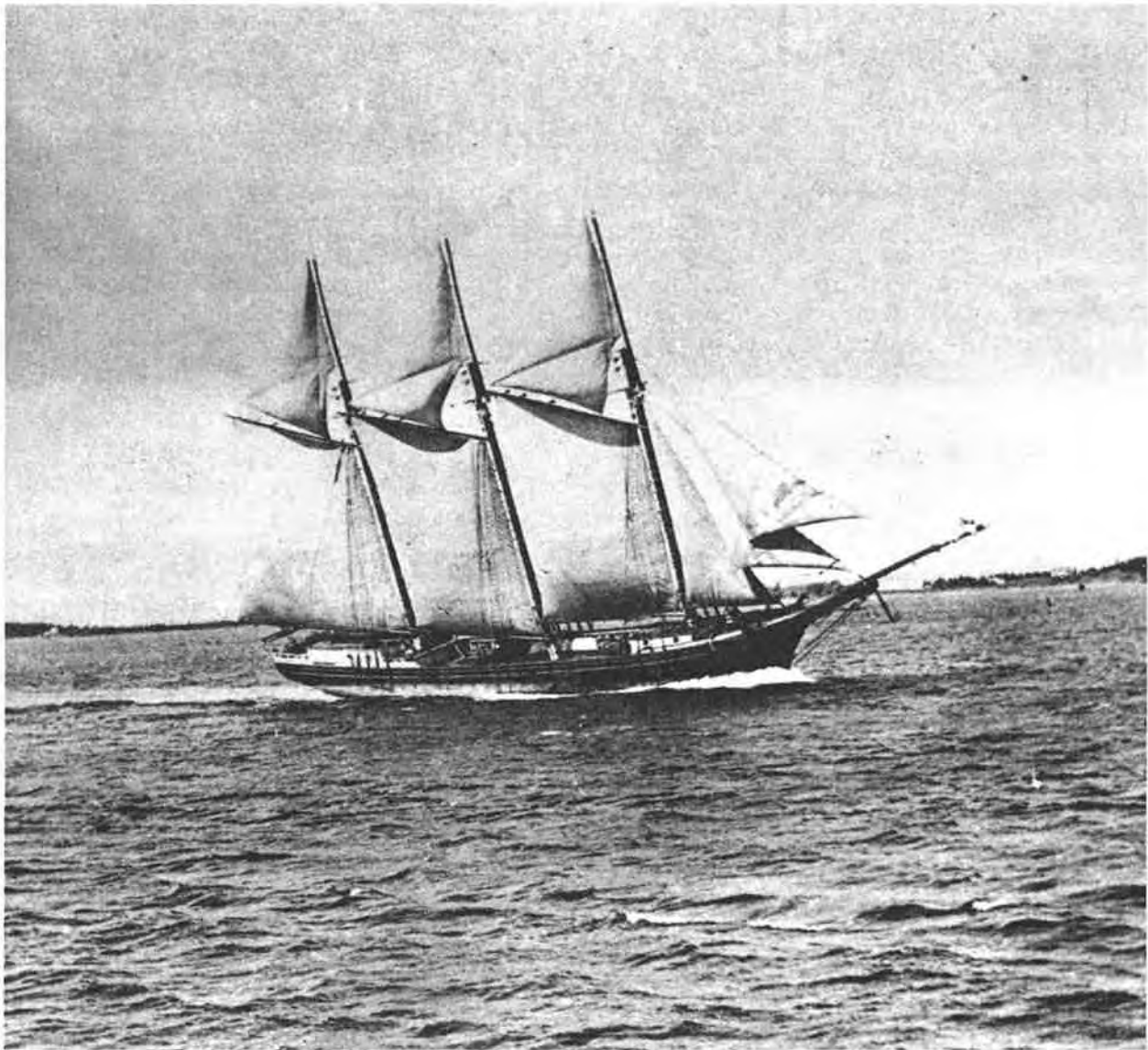


**SHIPS AND MEN
OF THE
BROAD KILL**



The Broad Kill's shipbuilding industry thrived in an era prior to the advanced development of the art of photography. Only a very few of these vessels remained by the time maritime photography became commonplace. The image of some Broad Kill vessels was contained in oil paintings which were photographed and reproduced in this book.

The above photograph has been identified by an authority as the REBECCA M. WALLS, number 220. Reportedly, the photograph was taken about 1910 in Deer Island Thorofare, Maine.

The WALLS was one of 39 three-masted schooners built at Milton. Though positive identification of this vessel cannot be read from the photograph, it does serve to vividly portray such a Milton-built vessel under exhilarating sailing conditions. (Photograph courtesy Captain W. J. Lewis Parker, USCG.)

DELAWARE PUBLIC ARCHIVES

C O N T E N T S

Preface	i - v
The Ships and Men	1 - 354
Supplement	355 + 359
Broad Kill's Captains of Sail	360 - 372
The Writer	373 - 374
Acknowledgments	375 - 376
Index of Ships	377 - 379
Index of People	380 - 390