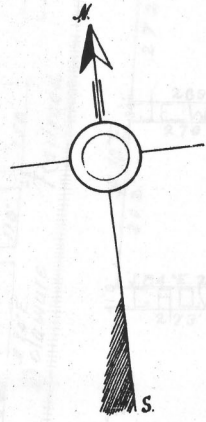
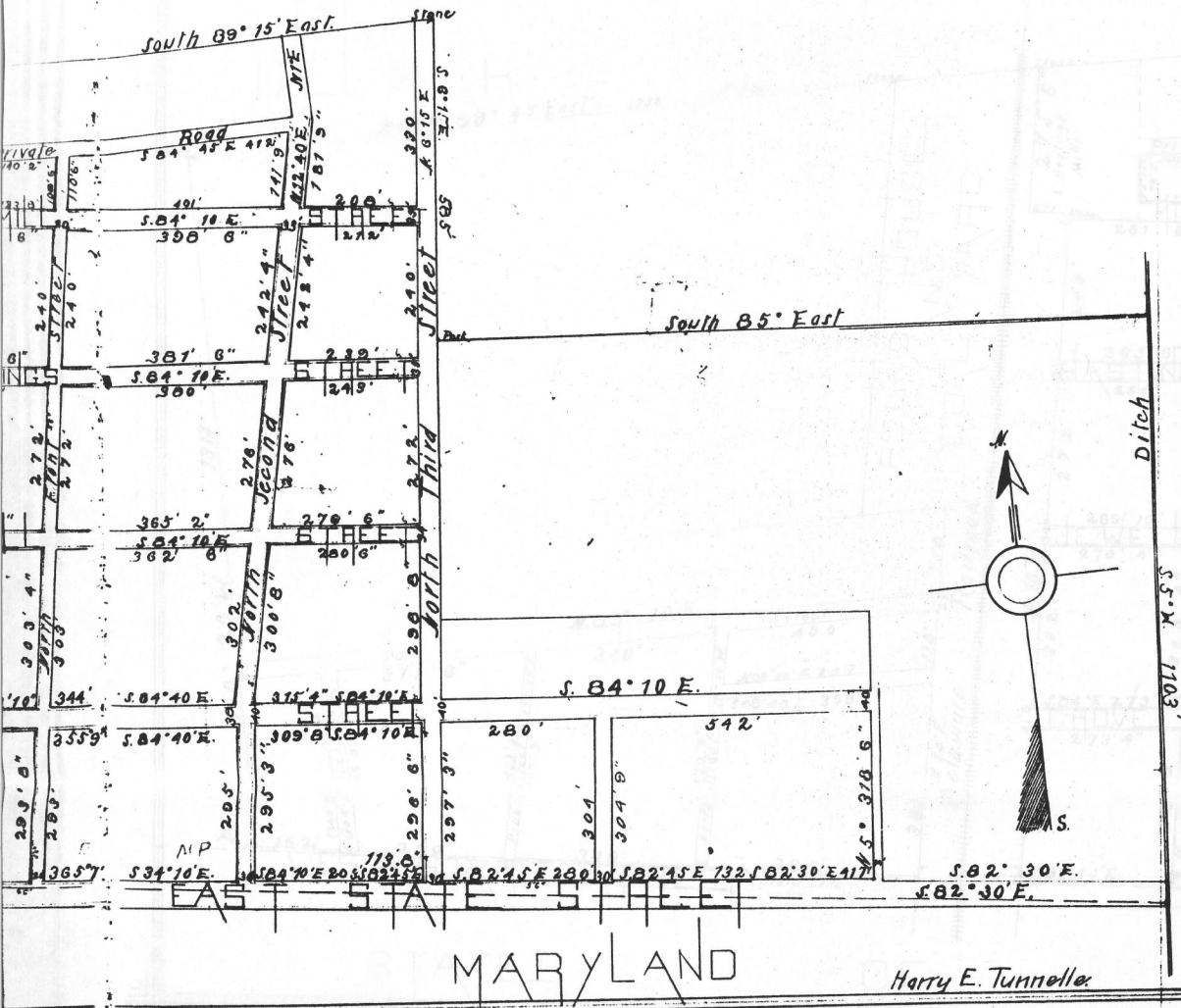


The Benjamin F. Barker Surveyor, Cicco and Jackson L. Ellis Commissioners named in the Act of the General Assembly of the State of Delaware incorporating the Town of Delmar in Sussex County of the State of Delaware passed at Dover, February 28th 1899 after having been duly qualified by taking the oath of office prescribed by said Act and having called to our assistance Samuel E. Foskey a Surveyor who was likewise qualified, did in the months of May and June in the year 1899 proceed to survey said town and establish its limits, streets, alleys, lanes, and side walks and we do hereby certify that this is a correct plot or map of said town.

Witness our hands this 17th day of July A.D. 1899

B. F. Barker
 J. L. Ellis } Commissioners
 J. L. Ellis }
 Samuel E. Foskey, Surveyor



MARYLAND

Harry E. Tunnelle.

Explanation.
 Characters and figures thus 5' 10" denote feet and inches, respectively.
 Black figures thus 35 denote widths of Streets at different places including gutters and
 Red " " 35" " " sidewalks " " fronts or places.
 Drawn by a scale of 200 feet to the inch
 July 6th 1894.

Sam'l. C. Foskey, Surveyor.

Rec'd for Record Sept. 28 at 12 M 1894
 Joseph B. Hearn,
 Recorder.