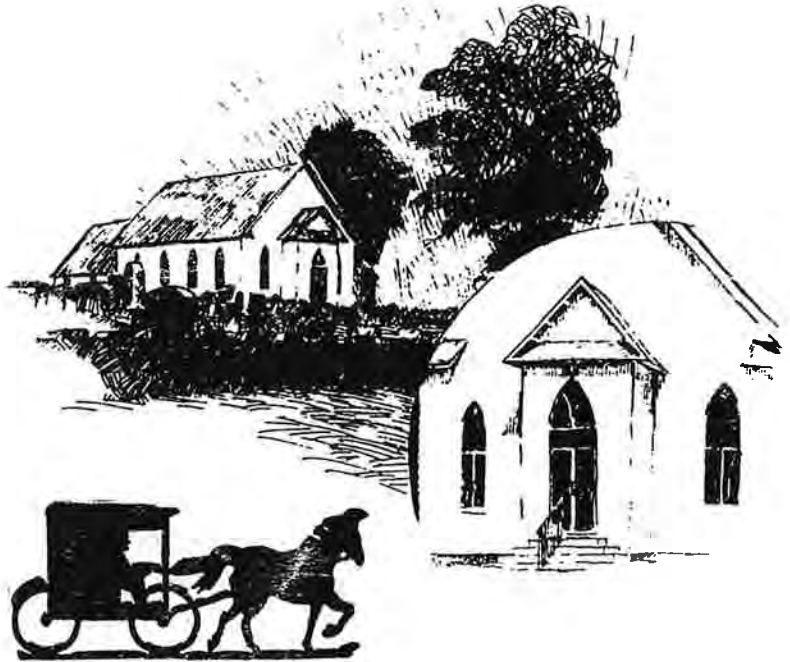


Bethel

Brown's Chapel, where Bethel now stands, was built in 1781 and was one of the first Methodist churches in the state. Methodists were one of the last of the major religious groups to come to the Delmarva Peninsula. The first were the Friends or Quakers, and following in succession were the Episcopalians, the Presbyterians, the Baptists, the Roman Catholics and the Methodists.



Brown's Chapel was named after White Brown, who donated the land for the church. However, the church changed its name when it was incorporated as Bethel in March of 1807. The present church was built in 1894. It has an extensive graveyard with the oldest tombstone bearing the date 1815. A short distance from the church is one of the original Mason-Dixon markers. The farm nearby called Bethel Church Farm is not connected with the church.

Taken from Old Country Churches of
Sussex County
by Robert H. Robinson &
Daniel G. Coston, Jr.