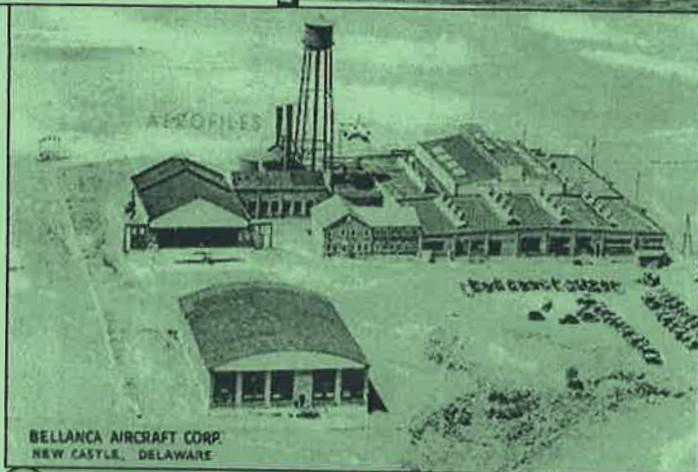


BELLANCA FIELD

75TH ANNIVERSARY
1928 OCTOBER 6 2003



Giuseppe Mario Bellanca



75th Anniversary Celebration
&
Dedication of the State of Delaware
Historical Marker
Thursday, October 9, 2003
New Castle, DE

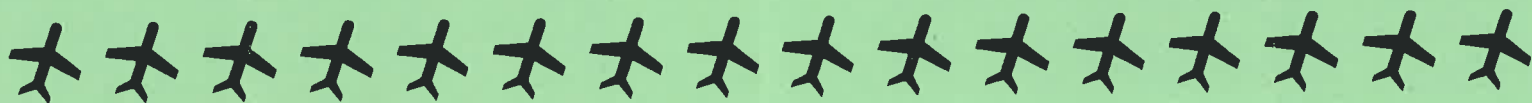
Delaware Public Archives Historic Marker NC-134

SITE OF BELLANCA AIRFIELD

Through the efforts of Henry B. duPont and others, an airfield and aircraft plant were established here in 1928 by Giuseppe Mario Bellanca (1886-1960). An aircraft service hangar was included. A native of Sicily, Bellanca immigrated to the United States in 1912. He was an aeronautical genius and aviation pioneer. His plane *Columbia* was Charles Lindbergh's choice for a Trans-Atlantic crossing, but he was unable to secure its use. It set a record of 51½ hours five weeks before Lindbergh's historic 33½ hour solo flight in 1927. Two weeks later the *Columbia* was flown non-stop to Berlin, a world record of 3,911 miles. His *Miss Veedol* flew the first Trans-Pacific flight from Japan in 1931. Over the years his planes established numerous records for firsts, altitude, endurance, and speed. Between 1928 and 1954, Bellanca produced approximately 3,000 aircraft at this site.

This 75th Anniversary Celebration and
Marker Dedication
is hosted by the
Trustees of New Castle Common
and
Friends of Bellanca

Marker Dedication – 2:30 p.m.
Light Refreshments immediately
following the ceremony.





CHAMBERLIN HOPS OFF FOR EITHER BERLIN OR MOSCOW!

“Clarence Chamberlin is shown above climbing into the cockpit of the Columbia Monoplane, just before he and Charles Levine hopped off from Roosevelt Field in a non-stop flight to the furthest away spot from New York, that their supply of gas will permit them to fly.”



XSOE-1 Seaplane built for the US Navy as an observation scout plane by Bellanca Aircraft, New Castle, DE.

Photos from the Jan Churchill Collection