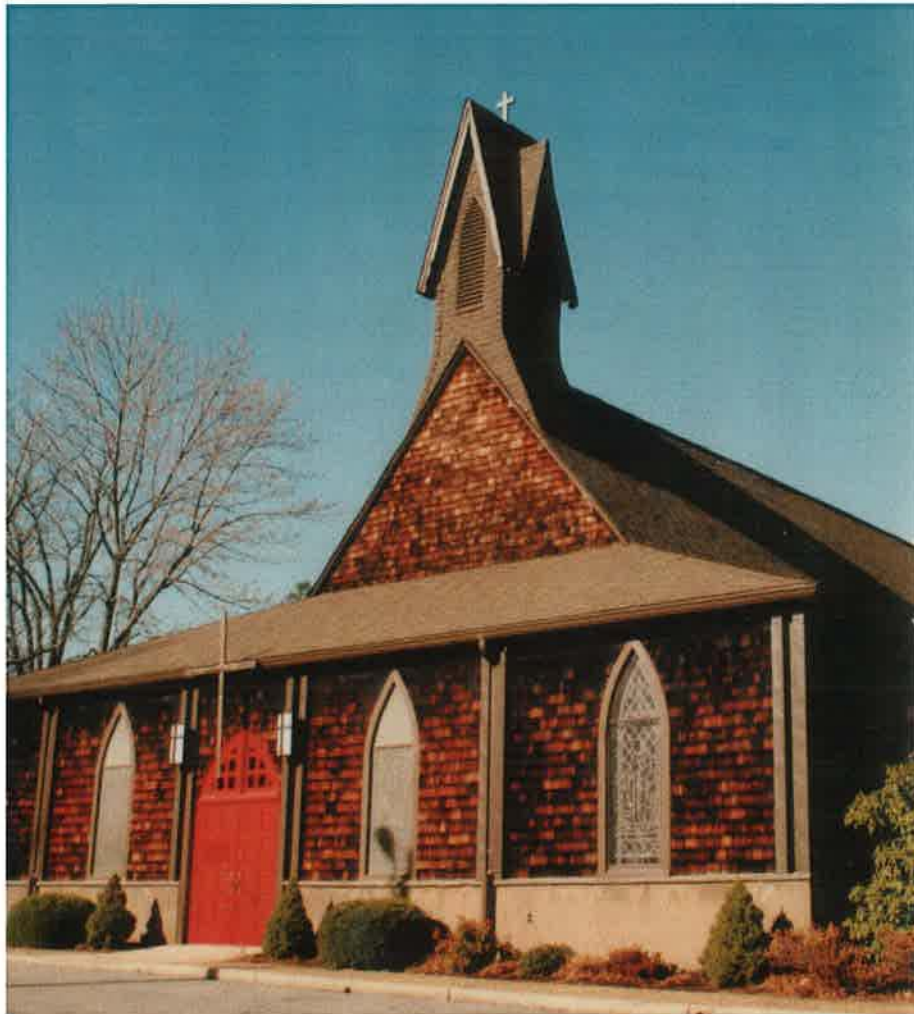


A History of Ascension's First One Hundred Fifty Years

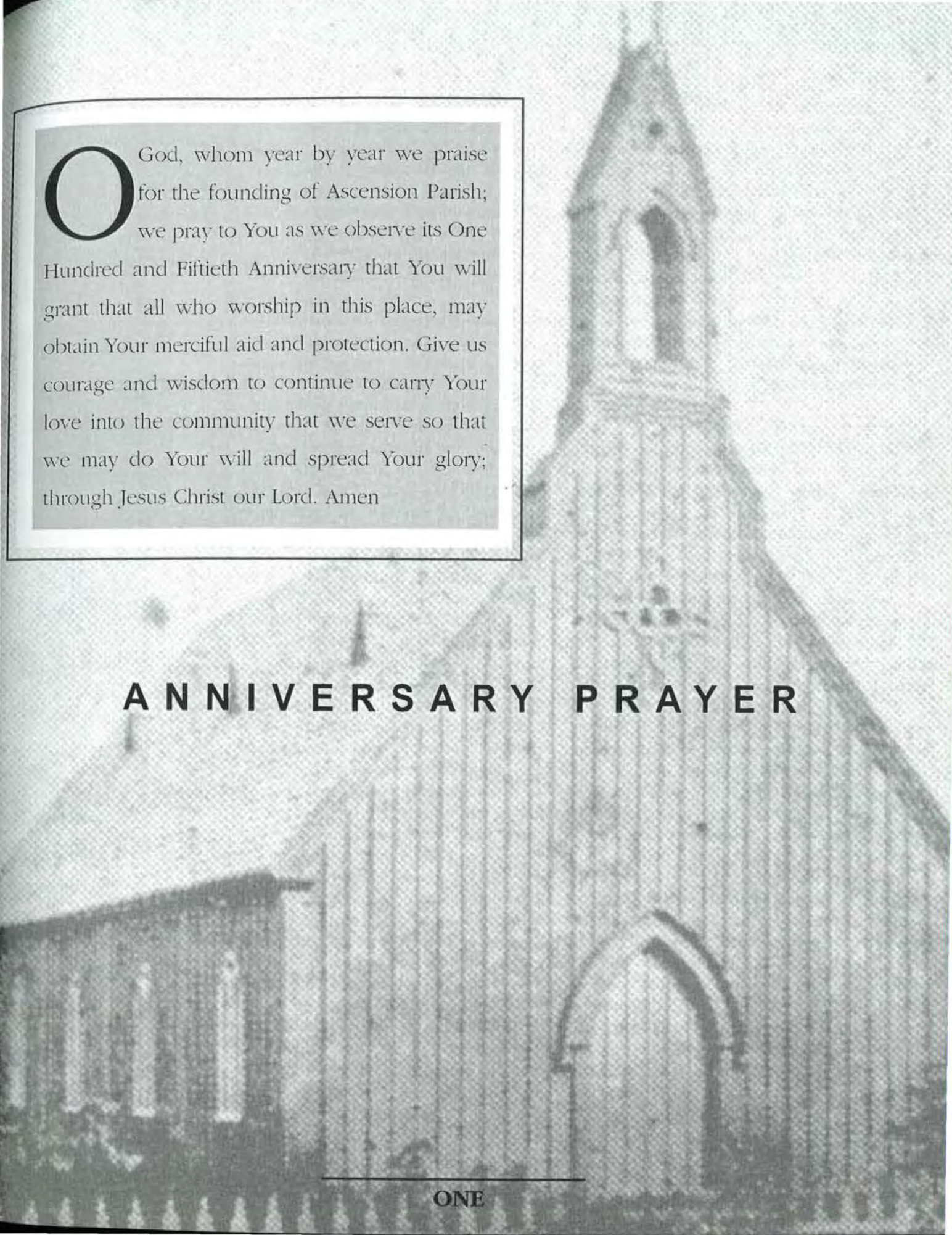


150

YEARS

MAY 28, 1851 – MAY 28, 2001





O God, whom year by year we praise
for the founding of Ascension Parish;
we pray to You as we observe its One
Hundred and Fiftieth Anniversary that You will
grant that all who worship in this place, may
obtain Your merciful aid and protection. Give us
courage and wisdom to continue to carry Your
love into the community that we serve so that
we may do Your will and spread Your glory;
through Jesus Christ our Lord. Amen

ANNIVERSARY PRAYER

ASCENSION'S FIRST 150 YEARS

In 1854, the Rev. Dr. Clemson, then rector, told the convention of the construction of the new church, which he said was "an imposing structure, after the simple gothic occupying a position of much beauty."



Resolved: That the Church of the Ascension, Brandywine Hundred, being a congregation duly organized is entitled to the benefit of the Constitution of the Dioceses and is admitted into the union with this Convention."

With this resolution, carried at the Annual Convention of the Diocese of Delaware on May 28, 1851, the Church of the Ascension, Claymont Delaware, was born.

At this time, however, the church was but a fellowship – an organized band of Christians with a leader, but without a house of worship of its own. It would be three years later before the church building would be completed.

Prior to 1851, Episcopalians in the neighborhood attended services in an adjoining community, which was in another state (Pennsylvania). The Rt. Rev. Mr. Alfred Lee, the first Bishop of Delaware, however, held occasional services, in The Old Stone schoolhouse at Naamans Creek as early as 1843. Currently the Old Stone Schoolhouse has been named as a State of Delaware historic site. It is being renovated at this time.

On October 7, 1850, a meeting was called at the home of George Lodge, at which Bishop Lee was present. Those attending (George Lodge, William C. Lodge, Thomas Clyde, William Gray, George Williamson, and John Lodge) became the founding fathers of the Church of the Ascension. They resolved "to organize a congregation to be under the jurisdiction of Bishop Lee, who according to the order of our church is the diocesan and spiritual head."

The name "Church of the Ascension" was chosen partly as a token of respect for the New York City Parish, of the same name, because "it has long been distinguished for its attachment to the principles of Protestant Episcopacy." Three months later, on January 4, 1851, another meeting was held. Articles of association were adopted. The Rev. G. W. Ridgely, a resident of the neighborhood, was elected rector. Thomas Clyde, George Lodge and William Gray were chosen to represent the new parish at the diocesan

convention, which admitted it into the diocese.

The following year, parish records indicate that it was "resolved that a desirable church building be built, at a cost of not less than \$2000.00." On May 2, 1853, Bishop Lee reported to the convention that "some progress has been made on the subscription for the erection of Ascension church, and I have reason to believe that the commencement of the building will not be much longer delayed."

The Rev. Dr. John B. Clemson, who conducted a private school in the neighborhood, patronized by Wilmingtonians, donated a parcel of land at the corner of the Philadelphia Pike and Church Lane.

In 1854, the Rev. Dr. Clemson, then rector, told the convention of the construction of the new church, which he said was "an imposing structure, after the simple gothic occupying a position of much beauty." Bishop Lee consecrated the church building on September 14, 1854. The bishop described the completion of the debt-free church as being "much to the credit of the vestry and congregation."

The flock, which for years the first rector and his successors cultivated, was small but documents of the parish bears evidence of the fruit of their work. Three young men entered the priesthood during the first 30 years.

During this period, several additions and improvements were made. Horse sheds were built, in 1861. A church bell was purchased in 1863. The church schoolroom was enlarged in 1870. Four years later, a recessed chancel and a bell tower were built. Re-opening services were held on July 4, 1875.

The altar was reconstructed in 1890 as a memorial to the late rector the Rev. William H. Moffett. Improvements made to the church in 1892/93 included re-shingling the roof and shingling the church siding. The Rt. Rev. Frederick J. Kinsman consecrated a new altar rail on July 11, 1915. On April 7, 1918, Bishop Kinsman dedicated a new organ, a memorial to Mrs. Emma Lodge, presented by her daughters, Mrs. George Lodge and Mrs. Annie Parrish.

ASCENSION'S FIRST 150 YEARS

While seven rectors guided the destiny of the Church of the Ascension during its first 33 years, there were six pastorates during the next 33 years, the rest of the first century was shaped by the guiding hand of one man, the Rev. Charles A. Rantz.

When Rev. Rantz came from Philadelphia on October 15, 1919, he was the only Episcopal clergyman in Brandywine Hundred, which covered about 40 square miles. He found Ascension parish with 36 communicants, no church school, and 12 persons including the choir in attendance for his first service. Claymont was a farming community, but World War I industries had given the impetus for suburban growth and the population increased from 300 to 4000, in a short time.

At that time, Ascension Parish was only one of Rev. Rantz's many duties. He also took charge of both Grace and Calvary Hillcrest Episcopal churches, for many years.

In 1926, under the rector's leadership, a lot adjoining the rectory property was purchased. One of Ascension's greatest needs was a parish house. A subscription was started promptly toward the construction of such a building.

As part of the parish house building program, the church was moved across the street adjacent to the new structure. Construction started and the Rt. Rev. Dr. Phillip Cook laid the cornerstone on June 26, 1927. In midsummer while moving the church, many delays and difficulties were encountered. The structure was raised and placed on supports and at this time the contractor defaulted. Approximately one week later, another contractor completed the work. During the actual crossing, which was done around midnight, it was necessary to halt all traffic and suspend all trolley service for several hours.

During the interim, the congregation worshiped at one of the other parishes that Rev. Rantz served. On September 18, 1927, the first service was held at the church in its new location. A little less than two months later, on November 13, 1927, Bishop Cook dedicated the parish house.

The cost of the new development program was \$36,000.00, of which \$12,000.00 was covered by cash and pledges. A mortgage of \$24,500.00 was placed on the property. During the years of the depression, the congregation carried the heavy financial burden; but could do little toward reducing the mortgage.

In the fall of 1941, a campaign was initiated to clear the remaining indebtedness of \$19,200.00. On Sunday morning November 5, 1944, a special service was held for "burning the mortgage." The Rt. Rev. Dr. Arthur R. McKinstry preached the sermon. This date was chosen because it coincided with the 25th anniversary of Rev. Rantz as rector.

The original organ was enlarged and reconstructed in 1940/41. In the 1950's there were many repairs and improvements the property. Among them: a new roof on the church building, repainting the church interior, resurfacing the rear parking lot and installing a new heating system.

Rev. Rantz retired in 1952 and died on September 15, 1961. He was succeeded on September 7, 1952 by the Rev. John Deforest Pettus, the son of episcopal missionaries in China. During his five years at Ascension, several preaching missions featuring outside ministers/teachers were held, and two adjacent properties were purchased. One became the new rectory, with the original rectory converted into an elementary school, which lasted only a few years. Upon his resignation in 1957, Rev. Pettus and his family moved to Louisiana where he died in 1980.

Rev. Pettus was followed in December of 1957 by the Rev. John C. Scobell, a World War I I veteran from Webster, New York.

In 1959, The Women's Board was formed. This was made up of chosen representatives from each of the women's guilds. At that time, there were seven guilds with approximately 90 active members. Mrs. Mabel B. Pierce was elected as its first president. The Board was disbanded in 1999, due to a duplication of effort. At that time, the parish had only one guild, the Ascension Guild.



...the rest of the first century was shaped by the guiding hand of one man, the Rev. Charles A. Rantz. He found Ascension parish with 36 communicants, no church school, and 12 persons including the choir in attendance for his first service.

ASCENSION'S FIRST 150 YEARS

Also in 1965, at the request of the Rev. Scobell, the Northeast Parishes Group was formed. It is a group of local churches, of different denominations, that actively seeks to answer some of the many the problems that face the local area.



The 1960's came in with a bang. The parish needed to build classrooms in the downstairs of the parish house. Through pledges and the sale of concrete blocks for \$1.00 apiece, the parish raised \$100,000 and in less than two years, by the end of 1962, the classrooms were built and totally paid for. It was also during this time period that the Rev. Mr. Edward Cosbey came to us as associate rector. An associate rector was new to most Ascensionites. Rev. Cosbey stayed with us until his death in January 1967.

In December 1963, the parish purchased the property at 926 Parkside Boulevard in Northridge, Claymont, as a rectory. The cost was \$29,500.00. Years later, at the request of the rector, the vestry approved the sale of this property to him for the sum of \$46, 000.00.

In 1965-66, the parish took on the most extensive debt in its history. The congregation had outgrown the little church that was moved across the street, in 1927. We needed to enlarge the building. There was a large fundraising drive to complete this project. With the help of the Diocese, the estate of the Rev. Rantz, and pledges, the rebuilding began. At that time a new Sunday school wing was added to the parish house. On September 10, 1967, Bishop McKinstry, then retired, dedicated the new church buildings.

Also in 1965, at the request of the Rev. Scobell, the Northeast Parishes Group was formed. It is a group of local churches, of different denominations, that actively seeks to answer some of the many the problems that face the local area. It is made up of three Episcopal, three United Methodist, one Roman Catholic, one Baptist, and one Presbyterian parishes as well as many community organizations. It holds monthly breakfast meetings rotating among its members. The group also sponsors Thanksgiving and Good Friday ecumenical services. Members also exchange lectors on Christian Unity Sunday each year.

Records indicate that, in 1968, the Church of the Ascension had approximately 400 contributing members. This is the largest number of contributing members that researchers have

been able to locate. Throughout most of the 1960's and into the mid 1970's, there were at least 300 regular members. In early 1968 the Rev. Dr. Henry N. Herndon joined us as associate rector. He had recently retired after a distinguished career as rector of Calvary Church, Wilmington.

In 1970-71, the youth of Claymont needed a place to meet. Ascension Parish gave the old rectory, next to the church for this purpose. The building was spruced up and repainted inside for that purpose. This project lasted approximately two to three years. This building has been used as an office, Sunday school rooms, and is currently being used as a home for our resident sexton. The refurbishing of the building for its current use, into a home, was largely due to a monetary bequest from a parishioner who had just died (Mrs. Ruth Amis).

Upon the resignation of Rev. Scobell in 1972, the parish called The Rev. Mr. Ronald Nevin to be our spiritual leader. He was born in England, and came to the United States in a pulpit exchange. The Nevin family liked living in this country, so they made arrangements to return and live here permanently. They later became American citizens. He was one of the guiding forces in the establishment of The Delaware Hospice Organization, which was very much needed. That organization is very comforting to many people in Delaware, who have terminally ill family members.

In June of 1976, Ascension Parish entered into a covenant relationship with the Holy Rosary Roman Catholic congregation in Claymont. At that time, we each prayed for each other's congregation each Sunday, One Sunday each year, representatives attended each other's services and spoke to the members present.

In 1978, we saw two retirements at Ascension. One was that of our Associate Rector, the Rev. Dr. Henry N. Herndon. He had been with us for 10 years. The other was that of Mrs. Mabel B. Pierce, our organist for 52 years.

In 1994, with the retirement of The Rev. Nevin, Ascension obtained the services of The Rev. Susan E. Cembalisty.

ASCENSION'S FIRST 150 YEARS

This was the first time in our history that we had a woman as "Priest in Charge:" of our Parish. She brought many innovations to the worship services. During this time, Ascension saw a renewed interest in the weekly adult education classes. We celebrated The Feast of Saint Andrew, "Scottish Heritage Sunday," annually for the first time. Also, in 1995/96 the 9:15am Sunday Family Service was started again, and is continuing in use at this time.

During 1999, two long time parishioners passed away. Each gave a substantial sum of money for the refurbishment of the church organ. This was the first major addition and modernization of the instrument, since its installation in 1940/41. Maintenance work is always an ongoing work in progress, but this modernization was most certainly needed. Another long time parishioner, H. Gregory Stilwell, is very ably heading up this project, assisted by Robert Oberg, Sr.

In November 1999, the parish was introduced to the Rev. Dr. Joseph T. Rivers III as our interim rector, along with his wife Carolyn.

Although Rev. Rivers came to us as a caretaker until a new rector could be selected, he was

quite successful in bringing the Parish back to more traditional forms of worship. Previously, we had been moving toward a more theatrical expression of the gospel. At our service a casket was wheeled down the center aisle, during Easter services, to illustrate a specific point in the sermon, or in another service a live pony processed through the church, in front of the choir, as a symbol of Jesus Christ's entry into Jerusalem on the first Palm Sunday.

In December of 2000, our new rector was chosen. She is the Rev. Rita Nelson from Clearwater, Florida. She and her husband Ralph Peters arrived on January 15, 2001. This is an especially busy time in the life of Ascension. We had the 150th Anniversary of the parish and the Diocesan Convention in April. Rev. Rita's institution as Rector took place on March 23, 2001.

In 1946, Ascension was host to the Annual Diocesan Convention for the first time in its history. Again in 1987 the Diocesan Convention was held at the Church of the Ascension. It was the first convention that the Rt. Rev. C. Cabell Tennis presided over. In 2001, the Diocesan Convention was held at The Church of the Ascension presided over by the Rt. Rev. Wayne P. Wright.

ASCENSION RECTORS



1
REV. GREENBURY
W. RIDGELY

See page #34



2
REV. LEWIS P. W.
BALCH, D. D.

See page #34



3
REV. JOHN B.
CLEMSON, D. D.

See page #34



4
REV. SAMUEL F.
HOTCHKIN

See page #34



5
REV. CHARLES E.
BETTICHER

See page #34



6
REV. PETER B.
LIGHTNER

See page #34

ASCENSION RECTORS



7
REV. CHARLES A.
HAYDEN

See page #34



8
REV. J. HARRY
CHESLEY

See page #34



9
REV. J. GIBSON
GANTT

See page #34



10
REV. CHARLES A.
RANTZ

See page #34



11
REV. JOHN
DEFORREST PETTUS

See page #34



12
REV. JOHN C.
SCOBELL

See page #34



13
REV. EDWARD
COSBEY *

See page #34



14
REV. HENRY N.
HERNDON, SR. *

See page #34



15
REV. RONALD
NEVIN

See page #34

ASCENSION RECTORS

16



REV. SUSAN E.
CEMBALISTY

See page #34

17



REV. JOHN E.
KEENE *

See page #34

18



REV. JOSEPH T.
RIVERS III **

See page #34

19



REV. RITA B.
NELSON

See page #34

RECTORS WITH NO PHOTOGRAPHS AVAILABLE:

- REV. R. HEBER MURPHY - JULY 1, 1879 TO NOVEMBER 30, 1982
 REV. EDWARD OWEN - MAY 30, 1886 TO SEPTEMBER 18, 1889
 REV. WILLIAM H. MOFFETT - JANUARY 10, 1890 TO DECEMBER 26, 1890
 REV. JOHN W. ARESON - JULY 1, 1913 TO DECEMBER 1, 1915

Notes: * = Associate Rector, ** = Interim Rector

Source for dates of institution as Ascension's Rectors, Parish Records.

BISHOPS OF DELAWARE 1841 - 1955

20



RT. REV.
ALFRED
LEE

See page #35

21



RT. REV.
LEIGHTON
COLEMAN, D. D.

See page #35

22



RT. REV.
FREDERICK J.
KINSEMAN, D. D.

See page #35

23



RT. REV. PHILLIP
COOK, D. D.

See page #35

24



RT. REV. ARTHUR R.
MCKINSTRY

See page #35

BISHOPS OF DELAWARE 1955 TO PRESENT



25

RT. REV. J.
BROOKE
MOSLEY, JR.

See page #35



26

RT. REV.
WILLIAM H.
MEAD

See page #35



27

RT. REV.
WILLIAM H.
CLARK

See page #35



28

RT. REV. QUINTIN
E. PRIMO, JR.

See page #35



29

RT. REV.
C. CABEL
TENNIS

See page #35



30

RT. REV.
WAYNE P.
WRIGHT

See page #35

VESTRY MEMBERS (1851 - 2001)

1. George Lodge * (1851 - 1877)
2. William C. Lodge * (1851 - 1880) + (1882 - 1899)
3. Thomas Clyde * (1851 - 1885)
4. William Gray * (1851 - 1854)
5. George Williamson * (1851 - 1867 **)
6. John Lodge * (1851 - 1859)
7. Marshall Hill (1854 - 1863 **)
8. John B. Gray (1854 - 1857)
9. George Thompson (1854 - 1859) + (1870 - 1873)
10. Abner Vernon (1854 - 1859)
11. George W. Lodge (1854 - 1859)
12. James Brown (1857 - 1870)
13. Samuel G. Lodge (1859 - 1873)
14. J. Hilborn Jones (1863 - 1876)
15. Alfred Darley (1863 - 1876)
16. William P. Cresson (1867 - 1876)
17. Del Aoblet (1867 - 1869)
18. Dr. John D. M. Cardeza (1869-1874) + (1876-1914)
19. Alexander Valentine (1873 - 1874)
20. William H. Casey (1873 - 1900)
21. William H. Churchman (1874 - 1877)
22. Isaac V. Lloyd (1874 - 1876)
23. William Cloud (1876 - 1924)
24. Alfred D. Bird (1876 - 1879)
25. D. C. Wharton Smith (1876 - 1884)
26. J. B. Wilson (1877 - 1883) + (1884 - 1886)
27. Frederick J. Addicks (1879 - 1885)
28. George K. Lloyd (1879 - 1882) + (1885 - 1907)
29. Alexander Valentine (1882 or 1887 - 1889 **)
30. Thomas Habbart (1882 or 1884 - 1909 **)
31. Charles J. Graff (1885 - 1890)
32. Geo. Stevens (1899 - 1909)
33. William L. Habbart (1899 - 1916)
34. George Lodge (1894 - 1943)
35. Edward M. Bird (1905 - 1920)
36. John F. Peters (1909 - 1914 **)
37. Edward G. Churchman (1911 - 1913)
38. Frederick W. Baker (1913 - 1932)
39. William J. Strawbridge (1915 - 1922)
40. Dilwyn Parrish (1919 - 1922)
41. Dr. D. T. Davidson (1921 - 1932) + (1936 - 1947)
42. Hon. Herbert L. Rice (1921 - 1932)
43. Robert S. Allen (1921 - 1924)
44. J. Paul Mullin (1921 - 1936)
45. Frank Bechtel, Jr (1922 - 1925) + (1933 - 1934)
46. Otto Lindley (1923 - 1930)
47. William N. Kline (1923 - 1931)
48. George Giles (1924 - 1949)
49. Lester Riggs (1925 - 1950)
50. Brooke W Miller (1930 - 1936)
51. Robert Hearn (1931 - 1933)
52. Edward Billstein (1932 -1953)
53. John G. Bechtel (1933 - 1934)
54. Ralph Shaw, Jr. (1933 - 1935)
55. William H. Talley (1933 - 1941)
56. Raymond T. Zebley (1936 - 1949),
(1950 - 1953)
57. William G. Robelen I I I (1936 -1951)
58. William H. Hickman (1937 - 1943)
59. Charles D. Moore (1942 - 1945)
60. John E. Banks (1943 - 1946)
61. John F. Little (1943 - 1946),
(1948 - 1951)
62. J. E. Laney (1946 - 1947)
63. E. F. Heitmiller (1946 - 1949),
(1950 through 1953)
64. J. Gordon McMillan, Sr. (1946 - 1949)
65. Phillip F. Crosland (1947 -1951),
(1956 through 1958), (1964 through 1969)
(1973 through 1978), & (1985 through 1990)
66. Alfred L. Glaeser (1947 -1950),
(1951 - 1953)
67. James F. Heal (1947 - 1950)
68. Fred J. Forsyth (1948 - 1951)
69. Ralph B. Cole, Jr. (1949 - 1951)
70. Robert C. McElhinney, Jr. (1949 - 1952)
(1955 through 1957), and (1964 - 1968)
71. E. Edward Rowles (1950 - 1953)
72. George G. Davis (1950 - 1951)
73. Albert Buckley (1951 -1953)
74. Harry H. Meyr, Jr. (1951 - 1953), (1955)
(1958 through 1963)
75. Earl Hughes (1951 - 1953)
76. James Smith (1951) & (1954 through 1956)
77. W. Newlin Keen (1952 through 1956)
78. G. Donald Knapp (1952 through 1955)
and (1957 through 1962)
79. John Pyne (1952 through 1955)
80. H Miller (1952 Through 1956)
81. Henry L. Maxwell, Sr. (1953),
(1962 through 1964) & (1970 through 1972)
82. Richard E. Cornwell (1954 through 1956),
(1958 through 1963), (1969 through 1971),
and (1975 through 1980)
83. Albert Jackson (1953 through 1957)
84. Donald Shackelford (1954 through 1956)
85. Rodney Gregg (1956 Through 1958)
86. Clyde Erwin (1954)
87. William P. Markland (1955 - 1956)
88. O. Victor Caille, Sr. (1955 through 1957)

VESTRY MEMBERS (1851 - 2001)

89. J. Ferguson (1955 through 1957)
90. Preston Leighton (1956 through 1959)
91. Christopher Egan (1955 through 1957)
92. David Hartzel (1955 through 1957) and (1961 through 1962)
93. Clifton Harvey (1957)
94. Richard Palmer (1957 through 1959)
95. Ralph P. Marden (1957 through 1959)
96. Malcolm MacKendrick (1957 through 1958)
97. Walter Phillips (1958 through 1962)
98. Charles Proud, Sr. (1957) and (1960 through 1962)
99. George Hendrix (1957)
100. Richard A. Boyer (1959 through 1964)
101. H. Chandler Davies (1959 through 1961)
102. I. Bruce Forrest (1959 through 1961)
103. Joseph Middleton (1959 through 1961)
104. G. Eber Brown (1959), (1962), (1965 through 1967), (1970 through 1974)
105. Mabel Bard Pierce (1960 through 1962) and (1966 through 1971)
106. Ruth Gillis (1960 through 1962)
107. John R. Greene (1961 through 1963)
108. Robert H. Thomas (1961 through 1966)
109. Raymond Peters (1963) and (1964)
110. H. Louis Brown (1963 through 1965)
111. Norman Travers (1963 through 1965)
112. William Woodgate (1963 through 1965)
113. John P. Sheets (1964 through 1966) and (1976 through 1978)
114. Ralph Gerrick (1965 through 1970)
115. David McMillan (1965 through 1967)
116. James Mannering (1965 through 1967)
117. Betty Palmer (1966 through 1969, (1971) and (1978 to 1982)
118. Mary L. Spare (1966 through 1968 and (1975 through 1979)
119. H. Gregory Stilwell (1966 through 1971) and (1980 to 1986)
120. Earl A. Pearson (1967 through 1969) and (1975 through 1977)
121. Robert J. Thomas (1968 through 1975) and (1978 to 1981)
122. Donald Diggs (1968 through 1970) and (1975 through 1977)
123. John Martin (1968 through 1973)
124. George D. Allen (1970 through 1972)
125. Ronald Richardson (1968 through 1974) and (1994 to 1997)
126. Phillip V. Hoffman (1970 through 1971)
127. J. Douglas Scott (1971 through 1975)
128. Jack D. Tinkler (1971 through 1973)
129. Donald E. Holcroft (1972 through 1974), (1978 to 1983) and (1989 to 1992)
130. Lois Tyler (1973)
131. Raymond Jacoby (1971 to 1973)
132. Samuel R. Lipscomb (1971 to 1973)
133. James G. McMillan (1972 through 1974), (1983 to 1989), (1991 to 1997) and (1999 to _____)
134. Betty Hoffman (1972 through 1978)
135. Harry A. Burlew, Jr. (1974 through 1978), (1980) and (1983 to 1986)
136. Pleasants Tinkler (1974 through 1977)
137. Dr. Ruth Ann Oartel (1973 through 1979)
138. Steuart Markley (1976 through 1979)
139. Frank J. Jablonski (1976 to 1977)
140. John Sutton (1977 to 1981)
141. Alan H. Tyler (1976 to 1982)
142. Raymond W. Axsom (1977 to 1983) and (1985 to 1991)
143. Sharon Connerly Moore (1978 to 1981) and (1987 to 1990)
144. Richard A. Hoffman (1979 to 1985)
145. Charles W. Proud, Jr. (1978 to 1981)
146. Francisco Navarro (1979 to 1985)
147. Rosalie Sheets (1980 to 1983)
148. Robert Rausch (1982 to 1985) and (1988 to 1994)
149. Carl G. Desmond (1982 to 1988), (1985 to 1991) and (1993 to 2001)
150. Jay Harter (1981 to 1984)
151. Lou Ann Simpson Holcroft (1981 to 1984)
152. Gerard B. Mazzenga (1982 to 1985)
153. Martha Fisher (1982 to 1985)
154. Diane Clark (1984 to 1987)
155. Eugenia M. Thomas (1984 to 1985) and (1989 to 1995)
156. Polly Fabrizio (1985 to 1987)
157. James Maxwell (1984 to 1985) and (1990 to 1993)
158. Thomas Eichler (1985)

VESTRY MEMBERS (1851 - 2001)

- | | |
|---|--|
| <p>159. Frances Whitman (1984)
 160. Ruth P. Allen (1986 to 1989) and (1991 to 1994)
 161. Sallie Rathbone (1985 to 1988)
 162. Everett H. Chapman (1986 to 1989)
 163. Barbara Krieger (1986 to 1989) and (1994 to 1997)
 164. Charles M. Smith (1986 to 1989)
 165. L. Diane Evans (1987 to 1990)
 166. Carol Mazzenga (1988 to 1994)
 167. F. Edward Kates, Jr. (1989 to 1995)
 168. Fred Blair (1989 to 1992)
 169. Thomas Snyder (1989 to 1992)
 170. Cheryl Datillo (1990 to 1993)
 171. Karen S. Sieber (1990 to 1993)
 172. Stella R. Williams (1992 to 1995) and (1996 to 1999)
 173. Alfred Lindh (1992 to 1998)
 174. Sandra Desmond (1993 to 1996)
 175. T. Ronald Seward (1993 to 1996)
 176. Dianne H. Burlew (1993 to 1996) and (1999)
 177. Mary Brown (1995 to 2001)
 178. Brian Finnegan (1995 to 1996)</p> | <p>179. Shirley Axsom (1995 to 2001)
 180. Eric M. Gorman (1996 to 1999)
 181. John Nonomura (1996 to 1997)
 182. William Suiter (1996 to ____)
 183. Patricia C. Chapman (1994 to 2000)
 184. Forrester A. Lee (1997 to 1999)
 185. Barbara Berheide (1997 to 1999)
 186. Colleen McDonald (1997 to 1999)
 187. Rebecca Elder (1998 to 1999)
 188. Nancy Smith (1997 to ____)
 189. Doris Page (1998 to ____)
 190. Michael Berheide (1999 to ____)
 191. Robert Sayre (1999 to ____)
 192. Kevin Klabunde (2000 to ____)
 193. Janet Middleton (2000 to ____)
 194. Steven Stephenson (2000 to ____)
 195. Lucille Jones (2001 to ____)
 196. Lorraine Witkowski (2001 to ____)
 197. Roy Young (2001 to ____)</p> |
|---|--|

* Founders of the Church of the Ascension

** Or before

0000 - 0000 = Listing prior to 1951

0000 through 0000 = Listing 1951 through 1978 (Annual Meeting Date changed from Nov. to May in 1978)

0000 to 0000 = Listing from 1978 to 2001 (Annual meeting date changed from May to January in 2000)

66



WARDENS (1851 - 2001)

1. George Lodge * (1858 – 1877)
2. John Lodge * (1858 – 1859)
3. James Brown (1859 – 1870)
4. George Thompson (1870 – 1874)
5. William P. Cresson (1874 – 1876)
6. William C. Lodge (1877 – 1879) and (1886 – 1899)
7. Alexander Valentine (1877 – 1882 **)
8. J. B. Wilson (1879 – 1882 **) and (1885 – 1885)
9. William Cloud (1882 – 1924)
10. Thomas Habbart (1882 – 1884)
11. Federick Addicks (1884 – 1885)
12. George K. Lloyd (1899 – 1907)
13. George Lodge (1907 – 1943)
14. Hon. Herbert L. Rice (1929 – 1932)
15. Lester Riggs (1933 – 1950)
16. George H. Giles (1943 – 1949)
17. Edward Billstein (1950 – 1953)
18. Raymond T. Zebley (1951 – 1953)
19. James Smith (1953 – 1956)
20. G. Donald Knapp (1953 – 1955)
21. G. Albert Jackson (1955 – 1956)
22. O. Victor Caille, Sr. (1956 – 1956)
23. J. Ferguson (1956 – 1957)
24. David Hartzel (1956 – 1957)
25. Richard E. Cornwell (1957 – 1962) and (1970 – 1971)
26. Rodney Gregg (1957 – 1958)
27. Harry H. Meyr (1959 – 1961)
28. Henry L. Maxwell, Sr. (1961 – 1964)
29. G. Eber Brown (1964 – 1967)
30. Norman L. Travers (1964 – 1965)
31. James L. Mannering (1966 through 1967)
32. Phillip F. Crosland (1968 through 1969)
33. Ralph Gerrick (1967 through 1970)
34. Donald Diggs (1969 through 1970)
35. Ronald D. Richardson (1970 through 1973)
36. Jack D. Tinkler (1971 through 1974)
37. Betty Hoffman (1973 through 1978)
38. Hany A. Burlew, Jr. (1974 through 1976), (1978 – 1981) and (1985 to 1986)
39. Alan Tyler (1976 through 1978)
40. Raymond Axsom (1978 to 1983)
41. Richard A. Hoffman (1981 to 1984)
42. Francisco Navarro (1983 to 1984)
43. James G. McMillan, Jr. (1985 to 1986), (1987 to 1988) and (1991 to 1996)
44. Donald Holcroft (1987 to 1989)
45. Robert Rausch (1988 to 1989)
46. Dianne H. Burlew (1992 to 1993) and (1994 to 1996)
47. Barbara Krieger (1996 to 1997)
48. William Suiter (1996 to 1999)
49. Carl G. Desmond (1997 to 2001)
50. Doris Page (1998 to ____)
51. Michael Berheide (2001 to ____)

* Founders of The Church of the Ascension
* * Or Before

LAY READERS

Sometime in 1956, the Rev. John Pettus started the lay reader training program, with 15 men. This group of dedicated men trained for one night per week for 18 months.

In 1957, after Rev. Pettus resigned, this core group of lay readers conducted the Sunday morning worship services. This was done for the entire time that Ascension was searching for a new rector. Most of these services were Morning Prayer services, because at that time the lay readers could not administer the Eucharistic chalice, as they can at this time. We did have a holy eucharist service at least once per month. A local supply priest would conduct the service at that time, or we would use previously consecrated bread and wine. The first group of lay readers from Ascension is listed below;

G. Donald Knapp (Head Lay Reader)
Richard A. Boyer
C. Donald Crawford, Jr.
Richard E. Cornwell
H. Chandler Davies
George Hendrix
Malcolm MacKendrick
Harry H. Meyr, Jr.
Fred Mitchell
Richard A. Palmer
Charles M. Smith

Mr. G. Donald Knapp was the Head Lay Reader from the beginning until his resignation in May of 1976. At that time, Dr. Donald Diggs assumed those duties. Upon Dr. Diggs' departure, Mrs. Dianne Burlew became Head Lay Reader.

In January of 1968, the duties of the lay readers were expanded. From that time, and to the present, they can administer the chalice during a Holy Eucharist service. The Bishop licensed Ascension's entire group of 13 Lay Readers. The Rector with vestry approval had to request this action.

In 1970/1971, the first woman lay reader in the Diocese of Delaware was being trained, (Mrs. Joy Murray). She was from Ascension.

In the early 1980's, this Diocese started to train, what is called, Communion Assistants.

These persons are licensed to administer the Eucharistic chalice. They are not trained as extensively in the background and history, and canons of the Episcopal Church as are Lay Readers. They do not have all of the rights and responsibilities that accompany the title of lay reader. Ascension has not trained any lay readers recently, although there have been many communion assistants trained during this time.

At this time, there are five licensed lay readers at Ascension. They are listed below.

Dianne H. Burlew
Harry A. Burlew, Jr.
Carl G. Desmond
Barbara Krieger
Sandra L. B. Pierce

During the late 1990's Mrs. Burlew resigned as leader of the Lay Readers/Communion Assistants group. At that time Michael McLain assumed the duties. He continued in that position until Sept of 2000 when Lucille Jones became the person in charge, of the group.

At this time, there are 27 licensed lectors/communion assistants in the parish. They are listed below. These people may serve as lectors and/or communion assistants at a Holy Eucharist or any other service that is held at Ascension.

Michael Berheide	Marjorie McKinley
Mary Brown	Michael McLain
Tony Brown	Lyndie Mozzoni
Dianne H. Burlew	Cindy Oakman
Harry A. Burlew, Jr.	Doris Page
Laura Calzone	Ralph Peters
Carl G. Desmond	Ronald Richardson
Rick Freebery	Sue Sayre
Eric Gorman	Nancy Smith
Lucille Jones	Sharman Stephenson
Amy Kates	William Suiter
Kevin Klabunde	
Barbara Krieger	
Forrester A. Lee	
Jeanne Lee	
Kathi Lichtenstein	

When candles were placed on the altar for the first time, The Rev. Rantz felt a servers group would be a valuable addition to the Parish and suggested the club members take on this assignment.

Established in 1940, the Acolytes' Group was the outgrowth of the four members Young Men's Club founded two years earlier. Group membership numbered four at the outset.

When candles were placed on the altar for the first time, The Rev. Rantz felt a servers group would be a valuable addition to the Parish and suggested the club members take on this assignment. They agreed.

The first group of servers included Theodore Pine, John Pine, Stephen Neff, Phillip Crosland, James McMillan, and Thomas Marshall. As the older boys went away to college and later to serve in the armed forces, newly confirmed boys took their places. The addition of the Processional cross-made it necessary to have two servers at each service at which the choir participated.

The group increased in number until it reached a membership of between 15 and 20, making it one of the largest servers' groups in the state.

Many members served in the armed forces during World War II, and whenever they were home on leave, took their place at the altar. Although all returned safely from the war, Phillip Neff, who served with the Army Air Corps, met his death in a commercial airplane crash in Spain in February 1947.

Special activities included monthly breakfasts, participation in acolytes' festivals, visits and trips to, other churches and baseball games, to which the Bishop would take all acolytes of the Diocese, in Philadelphia.

Although only boys served during the early years, girls were later admitted to the group and often outnumber boys at the altar. As many as six acolytes serve at special services. Adult men and women also serve regularly at the early morning service.

Phillip Crosland served as director of the acolytes for more than thirty years, under four rectors. Several persons have assumed the directorship in recent years. The current acolyte directors are Mrs. Stella Williams and Steve Stephenson. Under their direction the group now has 23 persons:

- | | |
|------------------------|-------------------|
| Megan Gorman | Shannon Suiter |
| Sloane Gregore | Charlie McKinley |
| B. J. Suiter | Julie Mariner |
| James McDaniel | Lela Golgolab |
| Lauren Berheide | Adam Stephenson |
| Jennifer McFarland | Quinton Brown |
| David McKinley | Joey Witkowski |
| Phillip Calzone | Allison Conte |
| Kelly McKinley (T) | Brian Grant (T) |
| Timaree Stephenson (T) | Eddie Kates (T) |
| Katherine Oakman (T) | Josh McDaniel (T) |
| Riley Klabunde (T) | |

(T) = Acolyte in Training

ADULTS:

- | | |
|-----------------|---------------|
| Daniel Krieger | Dianne Burlew |
| Barbara Krieger | Leo Mozzoni |
| Harry Burlew | |

ALTAR GUILD

About 1900, the Rev. J. Harry Chesley asked Mrs. Bertha Pierce to take care of the communion box. Until that time he had been carrying it from the rectory, which was located on Myrtle Avenue.

Mrs. Pierce accepted the request to take care of the box and its contents, and carried them to church and back to her home after every service.

She continued with this work during the rectorships of the Rev. John W. Areson and the Rev. J. Gibson Gantt, and for several years after the Rev. Charles A. Rantz came to Claymont in 1919.

Rev. Rantz suggested that several people could do this work, making the burden lighter for any one person, and the present Altar Guild was formed. Mrs. George Giles became the first directress and held that position for a number of years until she resigned because of poor health.

Mrs. John Little succeeded her and continued in the position until the mid 1950's. Other officers, at that time, were; Mrs. James Fawcett as secretary; Miss Esther White as treasurer; and Mrs. David Davis as Choir Mother.

In the 1950's, the Altar Guild duties were; take care of the necessities and appointments of the altar, to take care of the junior and senior choir. This included the purchase of the altar candles and communion elements.

During that time, the members would sew all linens for the altar, and make all choir vestments. During the autumn of 1950, the members completed 25 vestments for the junior choir. A total of 33 women worked on the project.

During the early 1950's, upon the resignation of Mrs. John Little, Rev. Rantz asked Mrs. J. Gordon McMillan (Miriam) to assume the duties as Directress of the Ascension Altar Guild. She was the mother of the current Vestry member, Jim McMillan. She held this position until 1974. The Rose Window, in the chancel was given in her memory. Mrs. McMillan was succeeded by Mrs. Virginia Cornwell who was only able to continue in the position, until 1976, when illness forced her to resign.

The next person, to direct the Altar Guild was Mrs. Betty Palmer. She continued, until the early 1980's, when she and her husband moved to Florida, upon his retirement.

Marguerite Condie became the next directress, in 1983. She held the position until 1999, when Helena Stilwell assumed the duties. She currently directs the group.

At this time, there are 17 members working in teams of two. The members set up and clean up the altar hangings and equipment, for each of the three services each week. The silver is polished once a month. The linens are washed as necessary, by rotating duties among the members.

The altar linens and paraments are given primarily as memorials, as are the chalices liquid candles, and other items. The flowers and bread and wine are usually given as different memorials, each week. The altar guild also has the responsibility for the necessary items required implementing such special services as weddings and funerals.

Although, no meetings are regularly scheduled, the members get together, as a group, at least once a year for fellowship.

The current membership includes - Mrs. Helena

Stilwell (Director), Mrs. Ann Archer, Mrs. Barbara Berheide, Mrs. Mary Brown, Mrs. Laura Calzone, Ms. Margurite Condie, Mrs. Peggy Groff, Mrs. Ruth Hoffman, Mrs. Carol Mazzena, Ms. Colleen McDonald, Ms. Carol Middleton, Mrs. Janet Richardson, Mrs. Eleanor Rotan, Mrs. Clara Sepcie, Mrs. Nancy Smith, Mrs. Helene Toy, and Mrs. Lorraine Witkowski.

THE CHOIR

The music of the Church of the Ascension had a very simple beginning. In the early years of the church, Miss Emma Tague played the organ, and William Habbart alternated with Willard Whiteman in pumping it by hand. The choir was comprised of Mrs. Emma Lodge and William Cloud.

In 1916, Mrs. Parrish, daughter of Mrs. Lodge, called a group together to augment the choir. In this group were Mrs. Edna Dawson, Miss Marian Whartenby, Mrs. Horace Malin, Mrs. Dorothy Talley, and others. During this period Miss Anne Danzenbaker occasionally relieved Miss Tague at the organ.

In 1919 the regular choir numbered four women, Mrs. Ethel Ellison, Miss Anne Danzenbaker, Mrs. Bertha Pierce, and Mrs. Dorothy Talley. Choir rehearsals consisted of meeting in the back of the church a few minutes before the start of a service, and deciding what to sing. A bonus of \$1.50 was given to anyone desiring to sing a solo.

Meanwhile, the organ was beginning to play tricks, sometimes bellowing forth with much gusto, and then lapsing into utter silence. Mrs. Margaret Riggs Hanby assumed the role of organist on Palm Sunday, 1919, and continued until May of 1924. The organ had been electrified, thus eliminating the hand pumpers, but it still continued its spasmodic playing.

Miss Enola Keen became organist in 1924 and played until 1926. Mr. Oddy became choir director, and there were three paid members of the choir; Mrs. Florence Lea, alto; Tom Davis, tenor; and Mose Roberts, bass. The rest of the choir consisted of volunteers, including Mrs. Talley, Mrs. Dawson, Mrs. Bertha Pierce, and Mrs. Lester Riggs.

The music of the church of the Ascension had a very simple beginning. In the early years of the church, Miss Emma Tague played the organ, and William Habbart alternated with Willard Whiteman in pumping it by hand. The choir was comprised of Mrs. Emma Lodge and William Cloud.

When Rev. Rantz became Rector, in 1919, there was no church school. He immediately organized one. Four teachers and three pupils attended the first session.

In 1926, Mrs. Mabel Bard Pierce became organist. She continued in that capacity for the next 52 years, until her retirement in 1978. Thomas Kilvington succeeded Mr. Oddy as choir director. At that time, the choir was made up entirely of volunteers. After Mr. Kilvington resigned in the early 1930's, Mrs. Pierce took on both jobs. She continued in that capacity until the early 1970's.

Finally with a sad wheeze, the organ gave out entirely, and a new one, plus some of the old parts, was installed and ready for use in September of 1940. It was financed through contributions from the congregation and friends, and has been in use until 2000. When it took on a major refurbishment.

During the 1950's and the 1960's, as the congregation grew so did the size of the choir. In 1961, there were 20 members. Ascension also had a very active Junior Choir. There were 23 members. Around 1970, Ascension had its first two "Folk Mass Services." The choir and a three piece combo; guitar, banjo, drums, plus the church organ supplied the music for these services. The music was of a modern contemporary nature, not necessarily traditional religious hymns. During this time, The Senior Choir would have at least one get-together each year. They would also get together after choir rehearsal each week over coffee. These were great occasions for fellowship.

In 1976, the Parish held a party for Mrs. Mabel B. Pierce, on the occasion of her 50 years of service as Organist and Choir Director. She started as substitute organist in 1924. In 1926, she became the full time organist. In 1978 Mrs. Pierce retired from Ascension after 52 years of service. This was not only as Organist/Choir Director, but also in many volunteer positions. Some of which are listed (Delegate to the Triennial Convention in 1955 and 1964, One of the first two women elected to the vestry, along with Mrs. Ruth Gillis in 1959. Mrs. Pierce also held many other voluntary positions within the parish, too numerous to mention. She died in September 1999, at the age of 93 years.

During the 1980's, the congregation membership decreased, and so did the number of children and youth of the parish. Also at that time the 9:15am family service was eliminated for some time. It was not until about 1995 that the 9:15am service would be revived. At that time, there was not enough children/youth to form a junior choir.

From 1978 to 1996 Ascension has had Evelyn Burnam, Gail Roe, Beverly Krentz, William H. Boyd, Stephen Moore, Harison Walker and Betty Spoelstra as Organist/Choir Director. Sandra L. Pierce, the current organist/choir director has been a member of Ascension choirs since she was a young child.

In 1998, the choir put on, what they called a "Roof Raising Dinner," with music and fellowship. This was done to raise money to help defray the cost of the new church roof. This was a great success.

In 2000, the choir decided to raise some extra money for the organ refurbishment. This time, they put on a spaghetti dinner; and this time they opened it up to the community. They also had entertainment. This was a great success, also. It provided the parish an opportunity to get better acquainted with some members of the community outside our church family.

At the present time, there are (13) members in the Senior Choir. — Sandra L. Pierce — Organist/Director, Stella R. Williams, Doris Pearson, Kathleen Lambert, Rosalie Sheets, Peggy Groff, Martha Fisher, Kristen Young, Sandra O'Tanyi, Sandra Desmond, Carl G. Desmond, H. Gregory Stilwell, and Forrester A. Lee.

CHURCH SCHOOL

In the latter part of the nineteenth century and until about 1914, Mrs. T. C. Parrish and George Lodge were very active in the church school, Mr. Lodge being the superintendent at that time. Among the early families in the church school were the Bird's, the Lodges, and the Habbarts.

When Rev. Rantz became Rector, in 1919, there was no church school. He immediately organized one. Four teachers and three pupils attended the first session. The classes were held in the basement of the church, which was also the furnace room and the choir room. August Ulan was the first superintendent.

When Mr. Ulan moved from the community, Dr. Douglas T. Davidson became superintendent. The membership of the church school soon increased to approximately 100 members. When the new parish house was built in 1927, the membership increased to about 200 members.

For a period during Dr. Davidson's time as superintendent, a special service was held on Friday afternoons during Lent for members of the church school. Games were played and refreshments were served preceding the services.

"Living the Good News" was chosen in 1996. The teaching staff held Sunday school classes from age four to adult, at that time. The Easter Egg Hunt, Stations of the Cross, Christmas Pageants, Services led by the children, Seders, and Missionary Work were included. This entire program is still ongoing.

The junior choir was also organized during Dr. Davidson's term. Robed in the traditional black and white vestments for a quarter of a century, the junior choir next wore red robes and caps with white cottas, made by the altar guild. During that time, they used to sing monthly when the church school met in the church, and annually at the Candlelight Service in December and the early Eucharist service on Easter Sunday.

After 20 years as superintendent, Dr. Davidson resigned. He was succeeded by John E. Banks.

During Mr. Banks' term as superintendent membership rose. He acquired a cash register and put it in the school. Birthday and special collections were rung up on this cash register and it became very popular with children and teachers alike.

Mr. Banks resigned as superintendent after six years, when his company transferred him to Florida. He was succeeded by James E. Heal. Mr. Heal remained in the job until the mid 1950's when Mrs. Marie Cade became superintendent.

Mr. Heal instituted the use of church films once a month in the church school session. A 16-mm projector was also purchased at this time. A wooden altar was added in the senior department to aid in devotions. The primary department had used an altar for a number of years.

For years the church school has materially helped the church meet its missionary assessment, through church school Lenten offerings. These are raised by the children individually through mite boxes and by special class and group projects.

By 1956, confirmation classes were instructed by Mr. Donald Crawford. This program continued into the 1970's. The Brown House/Amis House was used for classrooms until the Rantz Wing was completed in 1967. Lectionary based curriculum was used in the church school prior to the 1970's.

The Colorado Curriculum was chosen in the 1970's. It was used until 1982. This program is based on the lesson and gospel readings. In 1982, the Rev. Ronald Nevin and Mrs. Cheryl Datillo, the Church School Superintendent, incorporated the St. John Curriculum. Although a complete program of instruction, it proved to have little success with the children. The children used videos and headphones. They worked individually.

By 1989, the switch back to the Colorado Curriculum was made. By 1995, Ascension's

population had diminished and there were just a few children left. The children were at the primary age. A new program was initiated, based on the Christian calendar year.

Under the direction of The Rev. Susan Cembalistry and Mrs. Mary Brown, the Episcopal Lectionary based curriculum, "Living the Good News" was chosen in 1996. The teaching staff held Sunday school classes from age four to adult, at that time.

The Easter Egg Hunt, Stations of the Cross, Christmas Pageants, Services led by the children, Seders, and Missionary Work were included. This entire program is still ongoing.

In addition, The Rev. Cembalistry introduced bible education classes, for adults. The first class started with a Study of the book of Acts. These Classes were held on Sunday mornings during the breakfast club, between services.

That group, later became the 7:30pm Wednesday evening group. At about this time, the group had grown so large that it had to be broken into three groups. One was held on Thursday afternoons at 1pm. The 7:30pm Wednesday Evening Group continued as before; and the final group met at 6pm on Thursdays. When the Rev. Cembalistry resigned, these classes continued. They are still in progress and are being led by Mrs. Mary Brown and Mr. Carl Desmond.

Intergenerational Summer Bible School was created in 1997, to serve the Brandywine Parishes. Ascension hosted these seminars for the first two years, and then directed them for the third year. The concept has continued to date; but has been housed in the other churches within the Brandywine Parishes group. There has been a different theme each year.

The strength of the church school at present and in the past has been through the excellent training received in the Primary department. Heads of this department in the past have been Mrs. John Neff, Mrs. James C. Andrews, Mrs. William P. Dawson, Mrs. James W. Fawcett and Mrs. Isabelle I Miller. The recent additions to this list have been the church school superintendents. They are Mrs. Marie Cade, Ms. Nanese Hawthorne, Mrs. Cheryl Datillo and the current superintendent Mrs. Mary Brown.

The list of current church schoolteachers is as follows: Mrs. Mary Brown (Superintendent), Mrs. Kathy Gorman, Mrs. Nancy Freebery, Mrs. Lorraine Witkowski, Ms. Tiffanie Pierce (Nursery), and Mr. James Maxwell.

From the period, 1965 through 1967, Ascension assumed the largest debt in its history. This was to enlarge the Church building and to add a Sunday school wing to the property.

By 1975, Ascensionites determined that they would like to have a Memorial Garden on the property. In 1976, a site was chosen, and dedicated to that purpose. It was on the north side, of the church building near the portico doors, and proceeding west toward the parish hall.

Mrs. Virginia Cornwell was the first person to be interred in this newly dedicated area. Her ashes were interred in 1976, along with the dedication of the new Memorial Garden. The first obelisk was donated in her memory, by the Cornwell Family. Since then, there have been twenty-two more interments. (The List below includes those persons whose ashes have been interred through 2000)

When the first burial took place, the first obelisk was dedicated. By the year 2000, we needed a second Obelisk. At that time, Mrs. Audrey Scott's ashes were interred. A few months later the Scott Family donated a new obelisk in memory of Mrs. Scott.

PERSONS INTERRED IN THE ASCENSION
MEMORIAL GARDEN - 1977 TO 2001

1. Mrs. Virginia Cornwell 1920 - 1976
2. Mr. Bruce L. Wilson 1934 - 1977
3. Mr. Frank J. Jablonski 1913 - 1977
4. Mrs. Roberta E. Holcroft 1938 - 1980
5. Mrs. Madylon K. Heal 1909 - 1981
6. Mrs. Lillian E. Dolan 1908 - 1981
7. Mr. George D. Allen 1918 - 1982
8. Mr. Samuel Hyman 1916 - 1984
9. Martha W. Dawson 1917 - 1984
10. Mr. C. Donald Crawford, Sr. 1899 - 1985
11. Danielle Wilbur (Infant) 1987 - 1987
(Sept 17 - Sept 20)
12. Mr. John E. Lindh 1907 - 1988
13. Mr. Adrian J. R. Batt 1968 - 1990
14. Mr. Earl A. Pearson 1929 - 1992
15. Mr. Walter E. Phillips 1917 - 1992
16. Mrs. Genevieve G. Morrow 1910 - 1994
17. Mrs. Helen M. Dryden 1914 - 1995
18. Mrs. Margaret B. Hyman 1921 - 1997
19. Mr. Harry A. Burlew, Sr. 1923 - 1998
20. Mr. I. Bruce Forrest 1915 - 1998
21. Mrs. Ruth P. Allen 1918 - 1999
22. Mrs. Lucy Semerian 1918 - 1999
23. Mrs. Audrey B. Scott 1923 - 2000

PROPERTY COMMITTEE

In the early 1950's, The Rev. Pettus asked Mr. Edward Billstein to become Property Chairman for Ascension. At that time the Parish had purchased the Hackendorn Property most of which was later sold and is part of the property used to build the Claymont, I-495 exit ramp. This property was used as a rectory, while the adjacent property (Brown House/Amis House) was used as offices and Sunday school classrooms. The parish also paved the Church Parking Lot and set up Classrooms in the Brown House.

During the late 1950's and through the mid 1960's, many repairs and renovations took place. We will just list some of the major items. The old steam heating system was replaced with a more modern hot air system. Screens were designed and installed on the Church building. The Parish, also at this time, built five classrooms, in the lower level of the Parish Hall. The latter, being accomplished through a concentrated fund raising drive and a loan from the diocese. By 1962, this loan was paid in full.

H. Gregory Stilwell was the Chairman from (1965 - 1974), during the time of most change to the property. From the period, 1965 through 1967, Ascension assumed the largest debt in its history. This was to enlarge the Church building and to add a Sunday school wing to the property. In September 1967 the Rt. Rev. Arthur R. McKinstry dedicated the new and renovated buildings. This was the occasion that we had the largest number of people to attend a church service at Ascension. This number exceeded 400 persons.

After 1967, things stayed pretty calm, on the property front, until the kitchen was moved upstairs. At that time we added a gas stove, and a commercial refrigerator/freezer. This is the current location of the kitchen.

During the period from 1985 to 1988, the boiler was replaced with a gas boiler, and the parking lot was repaved. After many persons held the position of property chairman from 1975 to 1993, Mr. Stilwell was again asked to take on the job. This is a position, which he holds at this time.

In 1999/2000, the Church roof need to be replaced. This was done. There were complications that caused the cost to escalate to an enormous amount. This was because there were three roofs on the church, including the original cedar shake shingles.

During the years 2000 and 2001, the organ was renovated and re-furbished with the help of large memorial gifts from two long time parishioners who died during the previous year, plus smaller memorial gifts from other interested persons.

All had to be removed. The parish requested a loan from the diocese to help pay for this project. There was also a fund raising drive specifically to defray the amount that we had to borrow. During this time Ascension also, had to re-point the stone work on the Parish house and reseal the parking lot. These projects were all accomplished.

"The Rappers" (Retired Ascension Painters) came into existence in 1994, quite by accident. During a get-acquainted session with the Rev. Susan Cembalisty, Courtenay and Doris Page, Helena and Greg Stilwell, it was mentioned that there was a lot of painting that needed to be done. Thus, the "Rappers" group was born. The group started with the four members listed above; but soon it grew. These people are hard at work doing many various property chores, regularly on Wednesdays.

During the years 2000 and 2001, the organ was renovated and re-furbished with the help of large memorial gifts from two long time parishioners who died during the previous year, plus smaller memorial gifts from other interested persons. This project is long overdue, as there has not been a major renovation since the organ was installed in 1940-1941.

The current members of the Property committee are: H. Gregory Stilwell, (Chairman), Helena Stilwell Robert J. Thomas, Doris Page, William Suiter, F. Edward Kates, Jr., Patricia C. Chapman, Eleanor Rotan, Colleen McDonald, and Roy Young.

ASCENSION'S STAINED GLASS WINDOWS

All of the stained glass windows, inside the church, have been installed during the years 1979 to 1982 with the exception of one window. The side or aisle windows represent the seasons of the Christian year. Beginning from the rear of the church on the pulpit side, (on the left side as you face the altar), and proceeding to the front, then from the front on the lectern side, (right side), to the rear as shown on the following pages.

The four windows in the narthex entrance, facing the Philadelphia Pike represent the church's continuing work. One is of Archbishop of Canterbury, Thomas Cranmer (1489 - 1556)

representing our English Heritage. Another is of Bishop - William - White, - (1747 - 1836) of Philadelphia. Another one is of Saint Francis of Assisi (1182 - 1226). In March of 2001 the fourth and last front window was installed. It shows Jesus "I am the Good Shepherd."

The windows were donated by parish members, either as a memorial to a family member, or simply as an act of thanksgiving.

The centerpiece of all of this is the rose window, on the west chancel wall above the altar. It was installed in 1982, in memory of Mrs. Miriam F. McMillan, a long time active member of the parish. The window is interesting in design and construction. It is lighted only by artificial light, since the wall where it is installed is not an outside wall. It is made, to an original design, by Mr. Tony Mako of the Ann Willet Stained Glass Atelier Company. Mr. Mako is a native of Hungary. He escaped at the time of the Russian Occupation. One of the images he carries with him is that of looking back over Budapest as he escaped. To see the City burning against the darkened sky. No doubt, some of that memory is included in his use of light, in our window. The idea for the window really matured in his mind, after extensive interest in and reading about the Shroud of Turin. Mr. Mako discovered a theory, which holds as a possible explanation of

The facial imprint in the cloth. The notion of a sharp burst of energy at the resurrection, being captivated by this theory, he expressed his emotions in our window.

The design conveys a sense of explosive energy bursting upon us cleverly and inconspicuously interwoven into that light, is a cross of clear tubular glass. It suggests the proper notion that the cross and resurrection are truly two parts of one event, which is fulfilled in the Ascension. Thus, the artist conveys the major events in the life of our Lord, after the Nativity.

The construction is done by a somewhat rare technique of laminated glass, named farbig, which is found in a few places in the Eastern United States. Although the design is somewhat modern, it also includes traditional elements and blends with the more traditional stained glass windows in the church, which were designed by the same artist and produced by the same craftsmen.

STAIN GLASS WINDOWS



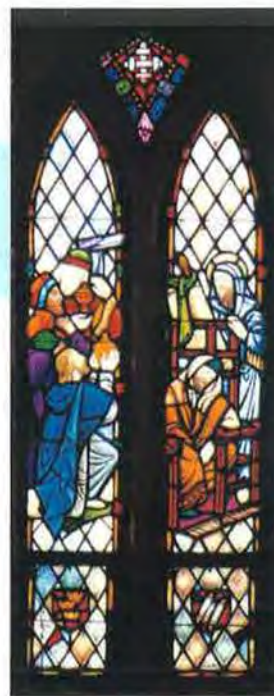
ADVENT*
WINDOW

PHOTO #31,
PAGE 35



CHRISTMAS*
WINDOW

PHOTO #32,
PAGE 35



EPIPHANY*
WINDOW

PHOTO #33,
PAGE 35



LENT*
WINDOW

PHOTO #34,
PAGE 35



EASTER*
WINDOW

PHOTO #35,
PAGE 35



ASCENSION*
WINDOW

PHOTO #36,
PAGE 35

STAIN GLASS WINDOWS



PENTECOST*
WINDOW

PHOTO #37,
PAGE 35



TRINITY*
WINDOW

PHOTO #38,
PAGE 35



**RT. REV.
WILLIAM
WHITE****

PHOTO #39,
PAGE 35



**ARCHBISHOP
THOMAS
CRANMER****

PHOTO #40,
PAGE 35



**ST. FRANCIS
OF ASSISI****

PHOTO #41,
PAGE 35



**I AM THE
GOOD
SHEPHERD****

PHOTO #43,
PAGE 35

*Along the side of the church building.
Along the front of the church building
Photo #42 is shown on the back cover.*

STAIN GLASS WINDOWS

WEST

12 Rose Window - **Miriam F. McMillan**, Altar

S O U T H	4 Lent	5 Easter	N O R T H
	3 Epiphany	6 Ascension	
	2 Christmas	7 Pentecost	
	1 Advent	8 Trinity	

EAST

9 Rt. Rev. William White

10 Arch Bishop Thomas Cranmer

11 St. Francis of Assisi

13 I am the Good Shepherd

*(#1 through #12, Above locations are viewed looking West, from Philadelphia Pike to Altar.
Bold = Memorials / Deceased Members)*

1 ADVENT

Dr. & Mrs. Donald R. Diggs

LANCET - 1
LANCET - 2
LANCET - 3

John the Baptist Preaching
The Annunciation
Heraldic Rose, Symbol of Messiah

2 CHRISTMAS

Mr. & Mrs. Earl Hughes

LANCET - 1
LANCET - 2
SYMBOL -

Shepherds on a Hillside
Holy Family in Stable
Christmas Rose

3 EPIPHANY

Mr. & Mrs. Harry A.
Burlew, Sr. & Jr.

LANCET - 1
LANCET - 2
SYMBOL -

The Wiseman
The Transfiguration
Epiphany Cross

4 LENT

Roberta Holcroft
Mr. & Mrs. Richard A. Hoffman

LANCET - 1
LANCET - 2
SYMBOL -

The Last Supper
The Crucifixion
Sheep & Staff for Good Shepherd

STAIN GLASS WINDOWS

5 EASTER

Frank Sepcie

LANCET - 1
LANCET - 2
LANCET - 3

Mary Magdalene in Garden
Women at Tomb with Angel
Three Empty Crosses

6 ASCENSION

William J. Burns
Mr. & Mrs. Raymond Axsom

LANCET - 1
LANCET - 2
SYMBOL -

Christ Ascending
Christ Seated at Throne
Elijah's Fiery Chariot

7 PENTECOST

Mr. & Mrs. William Gwynn

LANCET - 1
LANCET - 2
SYMBOL -

Choosing Mathias
Descent of The Holy Spirit
Ship of the Church

8 TRINITY

R.A. Palmer Family
Albert Buckley

LANCET - 1
LANCET - 2
SYMBOL -

The Great Commission
Nicodemus
Triangle

Windows #9, #11 and #13 are in back (Narthex) of the church (east end).

9 RT. REV. WILLIAM WHITE - (1747 - 1836)

Left, Looking West

Mr. & Mrs. William Schlittler
Mr. & Mrs. Thomas B. Smith
Clara Paulman

10 THOMAS CRANMER - (1489 - 1556)

Right, Looking West

Earl. Hughes - (1901 - 1981)

11 ST. FRANCIS OF ASSISI - (1182 - 1226)

Extreme Right, Looking West

Mrs. Louise F. Hughes - (1906 - 1995)

12 ROSE WINDOW

Looking West, Above Altar

Mrs. Miriam F. McMillan - (1897 - 1980)

13 I AM THE GOOD SHEPHERD

Extreme Left, Looking West

Mrs. Clara Cepcie
Mrs. Katherine Reed - (1909 - 1999)

During the mid 1960's, the Rev. John Scobell asked William Abrahams to become the head usher for the 11:00am service. This job requires the person in charge to set up a schedule, from a list of volunteers, and to make sure that the schedule is utilized. Mr. Abrahams did an admirable job until 1968, when he decided to switch from attending the 11:00am service to the 7:30am service. He then, became head usher for that service. A position he held until January 2000, when for health reasons, he had to give it up. At that time, Mrs. Patricia C. Chapman assumed the duties of Mr. Abrahams. A position which she holds at this time.

Upon Mr. Abrahams' departure, in 1968, the 11:00am service needed a new Head Usher. Rev. Scobell chose Robert J. Thomas for the position. The rector gave a list of usher's responsibilities to Mr. Thomas for distribution. Although the individual instructions change, somewhat each year, this is the basis for the list of instructions that is sent to each usher, annually. In 1968, the 11:00am service was changed to 10:30am.

During the early 1960's, the first father and son team of ushers was scheduled for the 11:00am service. They were Robert H. Thomas and Robert J. Thomas. They ushered during the 11:00/10:30am service until the death of Robert H. Thomas in 1976. There have been numerous father and son teams that have ushered since then. There have been and are also numerous parent/children teams active today, serving as usher/greeters for the 8:00am and 9:15am family services.

In February 1977, Mr. Thomas received an unusual request. At least, up to that time, it was an unusual request. Miss Patricia Hoffman requested to join the ranks, as an usher. It certainly was a good idea. She stayed with the group for approximately two years, until she went off to college. Currently, we have five woman ushers at the 10:30 service. This comprises approximately 25/30% of the 10:30am usher crew. There are other husband and wife teams ushering at this time, at the 8:00am and 9:15am service.

About 1982, Mr. Thomas left the position of head usher. Charles Fisher was recruited to be

the new Head Usher. He held the job for about three years. At that time, Daniel Krieger was asked to take over the position. He maintained it for about seven years.

Upon Mr. Krieger's departure from the job, in 1992, the Rev. Nevin asked Mr. Thomas to again take over the job as head usher. He holds the job at this time.

During most of the time that the Rev. Nevin was at Ascension, we had only two weekly services. One was at 8:00am and the other was at 10:30am. When the Rev. Cembalistry came, she re-instituted the current 9:15am family service.

In about 1995, the greeter group was a group formed. The primary function of this group is to meet and make welcome people as they arrive for church. Also to have them sign the guest book, and to ask them to join the rest of the congregation at the fellowship session (coffee hour) after the service. In general, to make the newcomers feel especially welcome.

As a general rule, the primary duties of an usher are as follows:

- To greet people as they arrive in Church, with a smile and a handshake.
- To Escort parishioners to their seats when required.
- To help visitors and new people find the correct pages in the prayer book/hymnal during services.
- To take a count of all persons at the service.
- To take up the offering.
- To control the flow of people going up to Communion.
- To check, clean and generally pick up leaflets and books, etc. after each service.

Ushers for the 10:30am Service for 2001

Janet Labree	Rebecca Elder
Doris Page	Nelye Gartor
Raymond Axsom	Paul McFarland
F. Edward Kates, Jr.	Steve Stephenson
Charles Fisher	John P. Sheets
Thomas Smith	Ralph Peters
Robert J. Thomas *	Eugenia M. Thomas
Phillip F. Crosland	

In about 1995, the greeter group was a group formed. The primary function of this group is to meet and make welcome people as they arrive for church.

*The Ascension
Guild was organized
April 15, 1920, at
the home of Mrs.
Estelle Husbands,
Philadelphia Pike
and Darley Road.*

Ushers for the 8:00am Service for 2001

Patricia C. Chapman *	Albert (Buddy) Clark
Ronald D. Richardson	Janet Richardson
James G. McMillan, Jr.	Frank Mariner
Ann Archer	

Ushers/Greeters for the 9:15am Family Service for 2001

Sayre Family Members: Bob* and Sue & Children,
Maxwell Family Members: Jim and Wendy
& Children
Suiter Family Members: Bill and Chrissie
& Children,
Klabunde Family Members: Kevin and Julie
& Children

* = Indicates Head Usher

Greeters for All Services for the year 2001

Shirley Axsom: 10:30
Bettie Chester: 8:00
Patricia Chapman: 8:00
Helena Stilwell: 10:30
Judy DuRoss: 8:00
Barbara & Lauren Berheide: 10:30
Ann Archer: 8:00
Ruth Ann Crawford: 10:30
Ruth Brown: 8:00
Phillip F. Crosland: 10:30
Mary Cherniski: 8:00
Rebecca Elder: 10:30
Henry & Arpie Maxwell: 10:30
Marjorie McKinley: 10:30
Steve and Sharman Stephenson: 10:30

WOMEN'S GUILDS

The Ascension Guild was organized April 15, 1920, at the home of Mrs. Estelle Husbands, Philadelphia Pike and Darley Road. The first officers elected were: Mrs. Charles A. Rantz, president; Mrs. William Robelen, vice president; Mrs. Lester Riggs, secretary; and Mrs. George Hutton, treasurer.

Meetings were held twice monthly for several years. They then changed to once a month. The Guild started with a membership of 54 women from the community, representing all religious faiths.

The Guilds have always been active in

providing financial aid for projects beneficial to the Church. The first requirement for funds was to install a pipeless heater and rebuild the chimney in the basement of the church. This project was completed prior to the move across the Pike in 1927. Choir vestments were needed, and the Ascension Guild made them. As the Church School was in need of a piano, the Guild purchased one.

Several early fundraising projects were: A Festival of Nations held in the fall of 1921 in the Green Lantern Theater under the leadership of Mrs. T. C. Parrish; A circus on the Worth athletic field in 1922; A cabaret and fashion show at the Green Lantern in 1923 and a card party and dance at the Hotel DuPont in 1925. In addition funds were raised by an annual Christmas sale and supper, rummage sales, bake sales, card parties and luncheons. Also spiced apples and curtains were sold at the Naamans TeaHouse (Robinson House).

In June of 1926, there was a "Fruit and Flower Festival," possibly a forerunner of later strawberry festivals; a rummage sale in November and a bazaar in December. All proceeds from these affairs were earmarked for the Parish house building fund.

In 1927 the new parish house required furnishings. Tables, chairs and lighting fixtures were procured from the American Sesquicentennial in Philadelphia by Dr. Douglas T. Davidson. The light fixtures include the four crown lights and the 10 sidelights were from that celebration. They were designed by Stanford White, a noted New York architect.

The kitchen was equipped by the guild with stoves, a sink, dishes, flatware, table linens, and towels.

In 1927, \$4600.00 was contributed to the parish house building program. Additional funds have been offered from time to time to the vestry for various projects.

Other items that the Guild has procured in later years are, the kitchen has been practically rebuilt, new cabinets have been added, a sink and steam tables and a new restaurant gas range installed. Two urns for making coffee were also purchased, as were light folding tables, each seating 10 persons. During this time, the Guild paid half of the sexton's salary, and recently gave 50 prayer books to the parish.

Draperies were provided for the Parish Hall windows, and these have proven to be quite helpful to the Church School for their visual education program.

All attention was not given only to Parish needs. Over the years, there has been involvement in many acts of charity and community service. During World War II a USO canteen and dance was operated on a regular basis. In February 1956 the Guild sent a letter to a local theater complaining about "bad" movies being shown. On many occasions, there have been collections of clothing, books and other supplies to aid residents of Central America, in particular. The guild has been active in our own community also; they prepared sandwiches for the dedication of the Claymont Post Office in 1961.

During the early 1960's there were many active adult women at Ascension. As a result, many Guilds were formed and thrived. They were Ascension Guild (the original), St. Margaret's, St. Martha's, St. Joan's, St. Faith's, and St. Claire's. At its height there were seven Guilds with 90 active members during the mid 1960's.

One interesting entry from the Women's Board minutes: "On Friday July 2, 1976, a man representing Caesar Rodney will arrive in Claymont on horseback at 7 am." He is re-creating Mr. Rodney's ride to be present to represent Delaware at the signing of the Declaration of Independence. The Board has been asked to furnish coffee and doughnuts to the public, gathered to see him. "We were also asked to provide his group with breakfast."

In 1994, the last five Ascension Guild members announced their intention to dissolve, due to loss of membership. At the meeting in May this announcement was formally made. St. Martha's Guild members felt that they did not want the original guild disappear and asked if they could take the name. It was agreed, and thus the current Ascension Guild was formed.

The new Ascension Guild thrived with the addition of its new members. The Women of Ascension Board held monthly meetings, but since there were representatives from only one guild on the Board, the Board was disbanded in 1999. The Ascension Guild activities and Responsibilities continue today under the chairmanship of Mrs. Shirley Axsom.

The women of Ascension are very proud to say that three of their members have served as diocesan Episcopal Church Women organization presidents. They are Mrs. Betty Hoffman (1982 - 1985), Mrs. Dianne Burlew (1991 - 1993), Mrs. Barbara Krieger (1997 - 1998). Dianne Burlew went on to serve as National Episcopal Church Women Treasurer (1994 - 1997). She was nominated to run as national President. Currently Mrs. Stella Williams is treasurer of the Diocesan ECW, (2001 - 2003).

WOMAN'S AUXILIARY

The earliest information about the Woman's Auxiliary came from its first president, Mrs. William S. Bird, who said, "I can remember so well being elected first president, and Mrs. T. C. Parrish said, Elect Jenny president and me Secretary, and I'll help her out."

Nine women were present at that first meeting in 1911. Among them were Mrs. Parrish, Mrs. Bird, Mrs. John Bird, Mrs. Bertha Pierce, Mrs. Estelle Husbands, and Mrs. Howard Wood. In the early years the Auxiliary met only during Lent to sew for the missionary box.

During World War I, the Auxiliary did Red Cross work. Members would make bandages and surgical dressings, etc. Soon other women came to help and the basement of the church (then on the other side of the Philadelphia Pike) became the center for all Red Cross activities in the community.

After the war, the Auxiliary resumed sewing for the missionary box. Women moving into the community augmented its numbers. The meetings began to be held monthly, in the afternoon, then was changed to sometime in the evening, so other women had the opportunity to attend.

Mrs. William Bird continued as president until 1925 when, after serving 14 years, she resigned because of ill health. Mrs. Lester Rigs, who continued in office for 15 years, succeeded her. Other presidents include Mrs. Douglas T. Davidson, Mrs. Canfield Haddock, Mrs. Charles A. Rantz, Miss Mary Jane Miller, Mrs. Robert S. Whitehead and Mrs. William H. Hickman.

Over the years the Auxiliary has made gifts of money to various projects in the Diocese and beyond. It has also sent missionary boxes to many parts of the world

The Auxiliary disbanded when some of its offices were assumed by members of the Women's Board, in 1959.

During World War One, the Auxiliary did Red Cross work. Members would make bandages and surgical dressings, etc. Soon other women came to help and the basement of the church (then on the other side of the Philadelphia Pike) became the center for all Red Cross activities in the community.

During the years the guild has sponsored many covered dish suppers, business luncheons, county fairs, and shows to raise the funds necessary to promote their chosen caused, both within the parish and outside in the larger church, and in the community.

The Ascension Guild was the first organized guild of the parish. This organization met in the afternoon and therefore a certain group of women who were employed, or kept at home by family obligations could not enjoy its activities.

During the summer of 1936, Mrs. Dora Rantz consulted with Mrs. Mabel B. Pierce regarding the advisability of organizing a "junior guild" to bring together women of the church and community for the purpose of promoting social, intellectual and business interests. Meetings were to be held in the evenings.

On October 20, 1936, the first meeting was held in the Parish Hall. The following officers were elected; Mrs. Harold Riggs, president; Mrs. Mabel B. Pierce, vice president; Mrs. William F. Jones, secretary; and Miss Esther N. White, treasurer. The name "Dorantz Guild" was adopted to commemorate the efforts of Mrs. Rantz in the guild's behalf.

Thorough the years the guild has had varied and interesting identity. Its projects include the installing of "office lights" on the altar, installing pads on the parish kneeling benches, remodeling the kitchen in the rectory, installing a light at the driveway, providing new hymnals in the church, new carpet in the center aisle of the church and in the vestibule, a new piano for the church school, and many minor contributions to charities outside the parish.

During the years the guild has sponsored many covered dish suppers, business luncheons, county fairs, and shows to raise the funds necessary to promote their chosen caused, both within the parish and outside in the larger church, and in the community.

During one of its peak membership periods, this ambitious group had a membership of about 30 women. At that time it had a very active schedule, with many additional projects lined up for the future.

The Dorantz Guild dissolved, when the Women's Board was formed in 1959. Its membership moved into the other existing guilds.

PRESIDENTS – WOMEN'S BOARD

1. Mabel B. Pierce 1958 – 1959
2. Ruth A. Gillis 1959 – 1961
3. Gladys Weldin 1961 – 1963
4. Betty A. Boyer 1963 – 1965
5. Elaine Bradford 1965 – 1967
6. Joy D. Murray 1967 – 1969
7. Eleanor Hitchens June 1969 – Dec 1969
8. Betty Hoffman 1969 – 1971
9. Josephine Knapp 1971 – 1973
10. Dianne H. Burlew 1973 – 1975
11. Barbara P. Russo 1975 – 1977
12. Eugenia M. Thomas 1977 – 1979
13. Sharon T. Connerly 1979 – 1981
14. Janet Labree-Baker 1981 – 1983
15. Martha Fisher 1983 – 1985
16. Sadie Nevin 1985 – 1987
17. Irene Lindh 1987 – 1989
18. Barbara Krieger 1989 – 1991
19. Karen S. Sieber 1991 – 1993
20. Cheryl C. Datillo 1993 – 1995
21. Stella R. Williams 1995 – 1997
22. Sandra Desmond 1997 – 1999

The Women's Board disbanded after the 1999 term because there was only one active guild, at that time. That was the Ascension Guild.

PHOTOGRAPHS

44



ORIGINAL CHANCEL - CA 1860
See page #36

ORIGINAL CHURCH BUILDING
(EXTERIOR)
See page #36

45



46



ORIGINAL BAPTISMAL
FRONT (CA 1854)
See page #36

CHURCH BUILDING (EXTERIOR), CA - 1913, PRIOR TO BEING MOVED
ACROSS PHILADELPHIA PIKE
See page #36

47



PHOTOGRAPHS

48



CHURCH BUILDING, INTERIOR
LOOKING WEST TOWARDS ALTER
CA - 1961

See page #36

CHURCH BUILDING, INTERIOR
LOOKING EAST, TOWARDS
DELAWARE RIVER - CA 1961

See page #36

49



50



CROWN LIGHTS IN
PARISH HOUSE
See page #36

YELLOW LIGHTS IN PARISH HOUSE,
ALONG EACH SIDE

See page #36

51



53



CONFIRMATION CLASS, 1949
See page #36

52



BURNING OF THE MORTGAGE
NOVEMBER 5, 1944
See page #36

PHOTOGRAPHS



54

PARISH LEADERS, CA 1951
See page #36

MEN'S LENTEN PASSION PLAY,
1959/1960
See page #36



55



56

PARISHIONERS
CELEBRATING MABEL
PIERCE'S 50TH
ANNIVERSARY AS
ORGANIST
See page #36



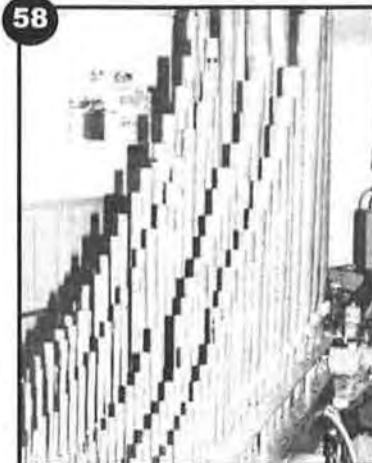
57

MRS. MABEL B. PIERCE
See page #36

TWELFTH NIGHT
CELEBRATION
See page #36



59



58

ORGAN PIPE DURING
REFURBISHMENT,
2000 - 2001
See page #36

PHOTOGRAPHS

60

JUNIOR CHOIR, 1959
See page #36



61



EVERY MEMBER
CANVAS THEME
See page #36

FEAST OF ST. ANDREW,
SCOTTISH HERITAGE SUNDAY
See page #37

62



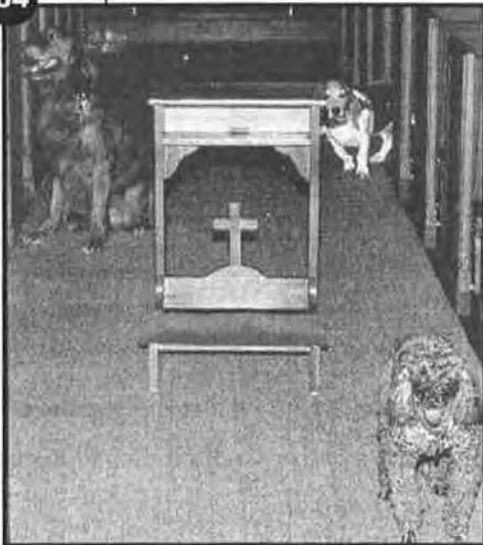
PHOTOGRAPHS

63

LENTEN CHANCEL
DRAMA CAST
See page #37



64



BLESSING OF THE
ANIMALS SERVICE
See page #37

65



CHURCH SCHOOL CHILDREN AT
CHRISTMAS PUPPET SHOW
See page #37

PHOTO CREDITS & IDENTIFICATION

FRONT COVER – EXTERIOR, CHURCH OF THE ASCENSION

Photo Credit – Henry L. Maxwell, Sr.

ASCENSION'S RECTORS 1851 - 2001

Photo #1	Page #5	Rev. Greenbury W. Ridgely	May 3, 1851 – October 14, 1851
Photo #2	Page #5	Rev. L.W.P. Balch, D.D.	December 6, 1851 - August 1, 1852
Photo #3	Page #5	Rev. John B. Clemson, D.D.	August 1, 1852 – April 14, 1874
Photo #4	Page #5	Rev. Samuel F. Hotchkiss	April 14, 1874 - February 14, 1876
Photo #5	Page #5	Rev. Charles E. Betticher	May 1, 1876 – December 15, 1878
Photo #6	Page #5	Rev. Peter B. Lightner	January 14 1883 – April 18, 1886
Photo #7	Page #6	Rev. Charles A. Hayden	August 4, 1891 - June 1894
Photo #8	Page #6	Rev. J. Harry Chesley	October 15, 1894 – March 15, 1913
Photo #9	Page #6	Rev. J. Gibson Gantt	April 2, 1916 – March 30 1919
Photo #10	Page #6	Rev. Charles A. Rantz	October 20, 1919 – June 1, 1952

Source for Photos #1 through 11, Church of the Ascension centennial history booklet

Photo #11	Page #6	Rev. John DeForest Pettus	September 7, 1952 – May 5, 1957 <i>Photo Credit: Phillip F. Crosland</i>
Photo #13	Page #6	Rev. John C. Scobell	December 22, 1957 – September 1, 1972 <i>Photo Credit: Reus. John C. and Kay Scobell</i>
Photo #12	Plate #6	Rev. Edward Cosby	1959/1960 – January 15, 1967 <i>Photo Credit: Wym. E. Lang</i>
Photo #14	Page #6	Rev. Henry N. Herndon, Sr.	January 1, 1968 - December 31, 1978 <i>Photo Credit: Henry N. Herndon Jr., Esq.</i>
Photo #15	Page #6	Rev. Ronald Nevin	June 23, 1973 – December 31, 1994 <i>Photo Credit: Church of the Ascension Archives</i>
Photo #16	Page #7	Rev. Susan E. Cembalisky	May 4, 1996 – September 1, 1999 <i>Photo Credit: Church of the Ascension Archives</i>
Photo #17	Page #7	Rev. John E. Keene	February 1, 1996 - January 31, 1998 <i>Photo credit: Church of the Ascension Archives</i>
Photo #18	Page #7	Rev. Joseph T. Rivers III	November 14, 1999 – January 14, 2001 <i>Photo Credit: Henry L. Maxwell, Sr.</i>
Photo #19	Page #7	Rev. Rita B. Nelson	March 23, 2001 - Current Date <i>Photo Credit: Henry L. Maxwell, Sr.</i>

Rectors whose photos are not available are listed below: (Page 6)

Rev. R. Heber Murphy	July 1, 1879 to November 30, 1882
Rev. Edward Owen	May 30, 1886 to September 18, 1889
Rev. William Henry Moffett	January 10, 1890 to December 26, 1890
Rev. John W. Areson	July 1, 1913 to December 1, 1915

PHOTO CREDITS & IDENTIFICATION

BISHOPS OF THE DIOCESE OF DELAWARE 1841 - 2001

Photo #20	Page #8	Rt. Rev. Alfred Lee	1841 – 1887
Photo #21	Page #8	Rt. Rev. Leighton Coleman, D. D.	1888 – 1907
Photo #22	Page #8	Rt. Rev. Frederick J. Kinsman, D. D.	1908 – 1919
Photo #23	Page #8	Rt. Rev. Phillip Cook, D. D.	1920 – 1938
Photo #24	Page #8	Rt. Rev. Arthur R. McKinstry, D. D.	1939 – 1954

Photo Credit – Diocese of Delaware

Source for Photos #20 through 24, Church of the Ascension Centennial History booklet unless noted

Photo #25	Page #9	Rt. Rev. J. Brooke Mosley	1955 – 1968
Photo #26	Page #9	Rt. Rev. William H. Mead	1968 – 1874
Photo #27	Page #9	Rt. Rev. William H. Clark	1975 - 1985
Photo #28	Page #9	Rt. Rev. Quintin E. Primo (Interim Bishop)	1985 - 1986
		<i>Photo Credit – Rt. Rev. Quintin E. Primo Family</i>	
Photo #29	Page #9	Rt. Rev. C. Cabell Tennis	1986 - 1997
		<i>Photo Credit – Diocese of Delaware</i>	
Photo #30	Page #9	Rt. Rev. Wayne P. Wright	1998 - Present

Source for Photos #25 through 30, Church of the Ascension Archives unless otherwise noted.

STAIN GLASS WINDOWS

Photo #31	Page #21	Advent Window	Dr. and Mrs. Donald R. Diggs
Photo #32	Page #21	Christmas Window	Mr. and Mrs. Earl L. Hughes
Photo #33	Page #21	Epiphany Window	Mr. and Mrs. Harry A. Burlew, Sr. Mr. and Mrs. Harry A. Burlew, Jr.
Photo #34	Page #21	Lent Window	Mrs. Roberta Holcroft Mr. and Mrs. Richard A. Hoffman
Photo #35	Page #21	Easter Window	Mr. Frank Sepcie
Photo #36	Page #21	Ascension Window	Mr. William J. Burns Mr. and Mrs. Raymond Axsom
Photo #37	Page #22	Pentecost Window	Mr. and Mrs. William Gwynn
Photo #38	Page #22	Trinity Window	Mr. and Mrs. Richard A. Palmer
Photo #39	Page #22	Rt. Rev. William White	Mr. Albert Buckley Mr. and Mrs. William Schlittler Mr. and Mrs. Thomas B. Smith Clara Pullman
Photo #40	Page #22	Archbishop Thomas Cranmer	Mr. Earl L. Hughes
Photo #41	Page #22	St. Francis of Assisi	Mrs. Louise F. Hughes
Photo #42	Back Cover	Rose Window	Mrs. Miriam F. McMillan
Photo #43	Page #22	I am the Good Shepherd	Mrs. Clara Specie Mrs. Katherine Reed

All proper names in bold letters indicate memorials to deceased persons; all others are in thanksgiving and donated by parish members.

PHOTO CREDITS & IDENTIFICATION

STAINED GLASS WINDOWS (CONT.)

- Photo #44** Page #29 **Original Chancel – 1860**
- Photo #45** Page #29 **Original Church Building, (Exterior)**
- Photo #46** Page #29 **Original Baptismal Font, (Still in Use) and Madonna Statue**
Photo Credit – Robert J. Thomas
- Photo #47** Page #29 **Church Building (ca 1913, (Exterior)-(Previous to being moved)**
- Photo #48** Page #30 **Church Interior, Looking West, (toward altar), (ca 1961)**
- Photo #49** Page #30 **Church Interior, Looking East, (toward Delaware River, (ca 1961)**
- Photo #50** Page #30 **Crown Lights in Parish House (in center)**
Photo Credit – Henry L. Maxwell, Sr.
- Photo #51** Page #30 **Yellow Globe Lights in Parish House (along each side)**
Photo Credit – Henry L. Maxwell, Sr.
- Photo #52** Page #30 **Burning of the Mortgage and Rev. Rantz's 25th Anniversary as Rector at Ascension, November 5, 1944**
Photo Credit – Phillip F. Crosland
- Photo #53** Page #30 **Confirmation Class, 1949**
Photo Credit – Church of the Ascension Centennial Booklet
- Photo #54** Page #31 **Parish Leaders (ca 1951), (l-to-r: Edward Rowles, Edward Heitmiller, Edward Billstein, Ralph Cole and Robert McElhinney)**
Photo Credit – Phillip F. Crosland
- Photo #55** Page #31 **Men's Lenten Passion Play, (ca 1960), (l-to-r) Henry L. Maxwell, Sr., Walter Phillips, G. Eber Brown, H. Louis Brown, and Charles Proud, Sr.**
- Photo #56** Page #31 **G. Donald Knapp, Miriam McMillan and J. Gordon McMillan, and Roland Stephenson (1976)**
Photo Credit – Robert J. Thomas
- Photo #57** Page #31 **Photograph of Mabel B. Pierce, (ca 1970)**
Photo Credit – Mrs. Sandra Pierce
- Photo #58** Page #31 **Organ pipes (During refurbishment - 2000-2001)**
Photo Credit – Robert J. Thomas
- Photo #59** Page #31 **Twelfth Night Celebration – H. Gregory Stilwell, Helena Stilwell, Doris Page, Sharman Stephenson**
- Photo #60** Page #32 **Junior Choir, (ca 1959), 1st row (l-to-r): France Spare, Greg Aukerman, Christine Proud, Cathy Aukerman, Chip Proud, Billy Spare, Betty Brown. 2nd row (l-to-r): Lois Bradford, unidentified, Cheryl Christianson, Barbara Phillips, Donna Davies, unidentified. 3rd row (l-to-r): Diane Davies, Barbara Decker, Susan Moudy, Freida Fields, Sandy Beideman, Sharon Tull. Last Row (l-to-r): Suzanne Simpson, Linda Spare, Emma Louise Marden, Judy Shepard.**
Photo Credit – Mrs. Sandra Pierce
Photo Credit – Robert J. Thomas
- Photo #61** Page #32 **Stewardship Every Member Canvass Theme, 1999 (Enlarge the Site/Sight of your Tent)**
Photo Credit – Robert J. Thomas

PHOTO CREDITS & ACKNOWLEDGMENTS

STAINED GLASS WINDOWS (CONT.)

- Photo #62 Page #32** Feast of Saint Andrew (Scottish Heritage Sunday - 1996), (l-to r): Tiffanie Pierce (Crucifer), Matt Lichtenstein, and Carl Lichtenstein, (Both Acolytes)
Photo Credit - Robert J. Thomas
- Photo #63 Page #33** Lenten Chancel Drama, (Mid 1990's), 1st row (l-to-r): Martha Fisher, Doris Pearson, Margie Adams, Casandra Desmond, Jean Beth Seward. 2nd row (l-to-r): Patricia C. Chapman, Helena Stilwell, Sandra Desmond. 3rd row (l-to-r): Colleen McDonald, Peggy Groff, Nancy Smith, Sharman Stephenson (Director), Ronald Richardson. 4th row (l-to-r): Victor Reed, Bill Suiter, Frank Groff, Genia Thomas, Phil Crosland, Stella Williams. Last row (l-to-r): unidentified, unidentified, Mike Berheide, Michael McLain.
Photo Credit - Mrs. Patricia C. Chapman
- Photo #64 Page #33** Blessing of the Animals Service - 1996
Photo Credit - Robert J. Thomas
- Photo #65 Page #33** Church School Children at Annual Christmas Puppet Show
Photo Credit - Henry L. Maxwell, Sr.
- Photo #66 Page #12** Photo of Church Interior (Current)
Photo Credit - Henry L. Maxwell, Sr.

Any photos listed above that do not have an acknowledgement can be assumed to come from the Church of the Ascension archives.

ACKNOWLEDGEMENTS

HISTORY AND RESEARCH COMMITTEE:

Robert J. Thomas *	Mrs. Rebecca Elder
Phillip F. Crosland *	Henry L. Maxwell, Sr.
Mrs. Shirley Axsom	Mrs. Doris Page
Mrs. Mary Brown	Mrs. Eugenia M. Thomas
C. Donald Crawford, Jr.	

* = Co-Chairman

RESOURCE PERSONS:

All committee members as listed above	Mrs. Stella R. Williams-(Acolytes)
The Rt. Rev. Quintin E. Primo Family	Ms. Lucille Jones: (Lay Readers)
The Revs. John and Kay Scobell	Ms. Martha Schiek
The Rev. Ronald Nevin	Mrs. Cheryl C. Datillo
Mrs. Helena Stilwell: (Altar Guild)	Kevin Klabunde: (Printing)
H. Gregory Stilwell: (Property Comm. and Organ)	Babak Golgolab: (Photo Scanning and Retouching)
Mrs. Sandra L. B. Pierce: (Choir)	Mrs. Wyn. E. Lang
Henry N. Herndon, Jr. Esq.	

OTHER SOURCES:

Church of the Ascension Centennial Booklet	Dioceses of Delaware Office
"The Episcopal Church in Delaware"	Church of the Ascension Archives
"Images of America - Claymont"	National Episcopal Church Office

1999 Diocese of Delaware Annual Report

Many thanks to all of the people and organizations listed above for your assistance.

Without your help this history could not have been produced.

INVENTORY OF THE CHURCH
ARCHIVES OF DELAWARE

by the

HISTORICAL RECORDS SURVEY

PRELIMINARY DRAFT NOW BEING
CHECKED FOR FINAL ACCURACY

MARCH 1940

Binder #1

WORK PROJECTS ADMINISTRATION

DIVISION OF PROFESSIONAL AND SERVICE PROJECTS

OLD POST OFFICE BLDG.

WILMINGTON, DELAWARE

Minutes, 1900--, 1 vol.; Financial, 1900--, 1 vol.; Sunday School, 1933--, 1 vol.; in possession of B. Christopher, Record of incorporation and deeds: Sussex Co. Recorder's office, Deeds Record; vol. AX46, p. 380; vol. BJ83, p. 75; vol. BBO114, p. 346; vol. DFH212, p. 1.

548. ST. THOMAS CHURCH, 1842--, Elkton Rd., W. of Delaware Ave., Newark.

Organized 1842. Services were held in private homes until church was erected in 1843. It was consecrated in 1845. It is a one story stone structure, with tower and bell. First settled clergyman, Rev. Walter E. Franklin, 1845-52.

Minutes, 1842-1932, 1 vol.; in State Archives. Minutes, 1932--, 1 vol.; in possession of Prof. Elisha Conover, West Main St. Register, 1842--, 3 vol.; in possession of rector, Rev. Andrew William Mayer, 176 W. Main St. Financial, 1842--, 2 vols.; in possession of Dr. J. Fenton Daugherty, 52 W. Delaware Ave. Sunday School, 1842--, 2 vols.; in possession of Mrs. Donald MacCreary, 50 W. Delaware Ave.

549. CHURCH OF THE ASCENSION, 1843--, Claymont.

Organized in 1843 as a mission of St. Martin's Marcus Hook, Pa. (see forthcoming Inventory of the Church Archives of Pennsylvania). Services were held in private homes until 1854 when present building was dedicated. Parsonage was built about 1864. Additions were built in 1927. It is a one story frame building with stone foundation. First settled clergyman, Rev. G. W. Ridgley, 1851-52.

Minutes, 1843--, 3 vols.; Register, 1854--, 3 vols.; in possession of rev. Charles A. Rantz. Financial, 1854--, 3 vols.; in possession of William H. Talley, Darley Rd. Sunday School, 1934--, 1 vol.; in possession of Douglas T. Davidson, Overlook Colony. Records of incorporation and deeds: New Castle Co. Recorder's office, Deeds Record; vol. R6, p. 172; vol. V7, p. 202; vol. E8, p. 28; vol. 38, p. 254; vol. H9, p. 295; vol. M9, p. 440; vol. O26, p. 454;

550. ST. MARK'S CHURCH, 1845--, State St., Millsboro.

Organized 1845. Services were held in homes of members, until 1849 when present building was consecrated. It was remodeled in 1868. It is a one story frame building with belfry and bell. First settled clergyman, Rev. J. Rambo, 1848-55.

Minutes, 1846--, 3 vols.; Sunday School, 1931--, 1 vol.; in possession of Gardner L. Ellis. Register, 1846--, 2 vols.; in possession of Rev. Richard K. White. Financial, 1924--, 1 vol.; in possession of J. A. Burton. Record of deed: Sussex Co. Recorder's office, Deeds Record; vol. AAI57, p. 53; vol. BGP246, p. 383.

551. CHRIST CHURCH, 1848--, Colinton St., Delaware City.

Organized 1848. Cornerstone of building laid in 1849. Services held in building while it was under construction. Building was consecrated in 1857. It is a one story stucco-finished brick building with belfry and bell. First settled clergyman, Rev. Andrew Freeman, 1848-49. See: Resume of history in record vols. Manuscripts and letters in church office.

THE CHURCHES OF DELAWARE

by

FRANK R. ZEBLEY

Author of "Along the Brandywine"



*A history, in brief, of the nearly 900 churches
and former churches in Delaware as
located by the Author.*

1947

was Thomas Clyde of Claymont. He was the head of the company which operated the Delaware River excursion steamer Thomas Clyde, a side-wheeler, well known to Wilmingtonians of that day. It was Mr. Hotchkin's idea to make the new church a memorial to the elder Clydes. He interested Wm. C. Clyde, a descendant of Thomas Clyde and Mr. Clyde contributed generously to the work and provided the beautiful memorial window in the chancel. The old church was torn down and the stone was used in building the new church. The corner-stone was laid on Sept. 26, 1909, by Bishop Frederick J. Kinsman. After the corner-stone was laid a ceremony was performed under unique circumstances when Clara, the infant daughter of Charles B. Palmer was baptized by the Rev. Dr. Hubert W. Wells of St. Andrew's Church, Wilmington.

The following morning the stonemasons arrived slightly "potted" and they decided to lay a corner-stone of their own before the boss arrived. They built a pocket in the n. w. corner of the wall into which they placed a copy of the Wilmington Morning News, fifteen pennies, a paper listing their names and a half-pint bottle of whiskey. They then sealed the pocket and proceeded to build the wall.

The church was dedicated on Sun. afternoon, Sept. 23, 1910, as "Calvary P. E. Church, Clyde Memorial," by the Rt. Rev. Frederick J. Kinsman, Bishop of Delaware. The Rev. S. F. Hotchkin delivered an address. Also taking part were Wm. H. Graef, former lay-leader at the Carrcroft church and the Rev. J. Leighton McKim of Milford. The pews from the old church were used for a few years. The cross in the chancel was from the old church.

The formal opening of the new Sunday School building took place on Feb. 6, 1927, with the Rev. Charles A. Rantz in charge of the exercises. The building was equipped to serve as a social-center.

Calvary Church has been the recipient of numerous gifts including the misal desk from the Rev. P. B. Lightner, a book of memory from Mrs. Henry R. Higgins, a grand-daughter of Bishop Lee, an altar cross as a memorial to Mrs. Frederick W. Queripel and the rebinding, in red leather, of the pulpit Bible from Christopher S. Glover. An organ was presented by the Rev. Edward H. Ford and friends on Dec. 31, 1931. On July 1, 1942, a rectory, on Lore Ave., was purchased.

Ground was broken for a new church, to be known as the "Bishop Philip Cook Memorial" on Tues., Jan. 15, 1946. The ceremonies were in charge of the Rt. Rev. Arthur R. McKinstry, Bishop of Delaware. The first spadeful of earth was turned by the Rev. Chas. A. Rantz, former rector of Calvary Church. Also taking part were the Rev. Jos. C. Wood, former rector, John M. Stewart, W. Albert Haddock, Wm. Heyl Thompson, the architect and the Rev. Francis D. Daley, the rector. Charles Petit Weldin, the contractor who built the first church on this site, was present as were nearly all of the clergy of the Diocese of Delaware.

The corner-stone of the new church was laid on Mon., Oct. 14, 1946, by the Rt. Rev. Arthur R. McKinstry, Bishop of Delaware. Assisting in the ceremonies were the Rev. Charles W. Clash, D.D., the Rev. John Ellis Large, the Rev. Francis D. Daley, the rector, John M. Stewart, Senior Warden, Wm. Heyl Thompson, the architect and Oscar S. Tally, the contractor. A large delegation of clergymen was present. The ceremony marked the 26th anniversary of the consecration of Bishop Cook as Bishop of Delaware.

The new church was used for the first time on Easter Sunday, Apr. 6, 1947 at which time services were conducted in the basement.

The Protestant Episcopal Church of the Ascension, at Claymont. As early as 1843, Bishop Alfred Lee held Episcopal services in a schoolhouse at Naa-

man's Creek, Claymont. A church was organized on Nov. 7, 1850. Stated meetings were held and in January, 1851, a committee was appointed to arrange the erection of a church building. A rector was appointed on Dec. 1, 1851. On Feb. 18, 1854, a lot of land at the cor. of Philadelphia Pike and Church Lane, was donated by the Rev. J. B. Clemson, who lived in the neighborhood. He conducted a private school patronized by many Wilmingtonians.

The church, of frame construction, was completed and was consecrated on Sept. 14, 1854, by Bishop Alfred Lee. It was named "The Protestant Episcopal Church of the Ascension." Horse-sheds were built in 1861.

A bell was purchased in 1863. A rectory was built in 1868. The Sunday School room was enlarged and improved in 1870. In 1874, a recess chancel and a bell-tower were built. Reopening services were held on July 4, 1875. On Easter Sunday, 1878, a silver communion set, in memory of a former warden, was blessed. The old set was to be given to some Indian congregation in the West.

The altar was reconstructed as a memorial to the late rector, the Rev. Wm. H. Moffett, in 1890-91. The church was improved in 1892-93 and new horse-sheds were built in 1895-96. A colored Sunday School was opened in 1903-04. A new altar rail was consecrated by Bishop Frederick J. Kinsman, on July 11, 1915.

On Sun., April 7, 1918, a new organ was dedicated by Bishop Kinsman. It was a memorial to Mrs. Emma A. Lodge presented by her daughters, Mrs. George Lodge and Mrs. Annie Parrish. New pews and furnishings were installed in 1924-25.

In 1926, under the leadership of the rector, the Rev. Chas. A. Rantz, a lot adjoining the rectory property on the westerly side of the Phila. Pike was purchased. The original church was moved to the new site in 1927. At the same time a new parish-house, of stone, was erected, at right angles to the church and connected to it. The corner-stone of the parish-house was laid on June 26, 1927, by Bishop Philip Cook assisted by the rector. The dedication services were held on Nov. 13, 1927, with Bishop Philip Cook and the Rev. Chas. A. Rantz officiating.

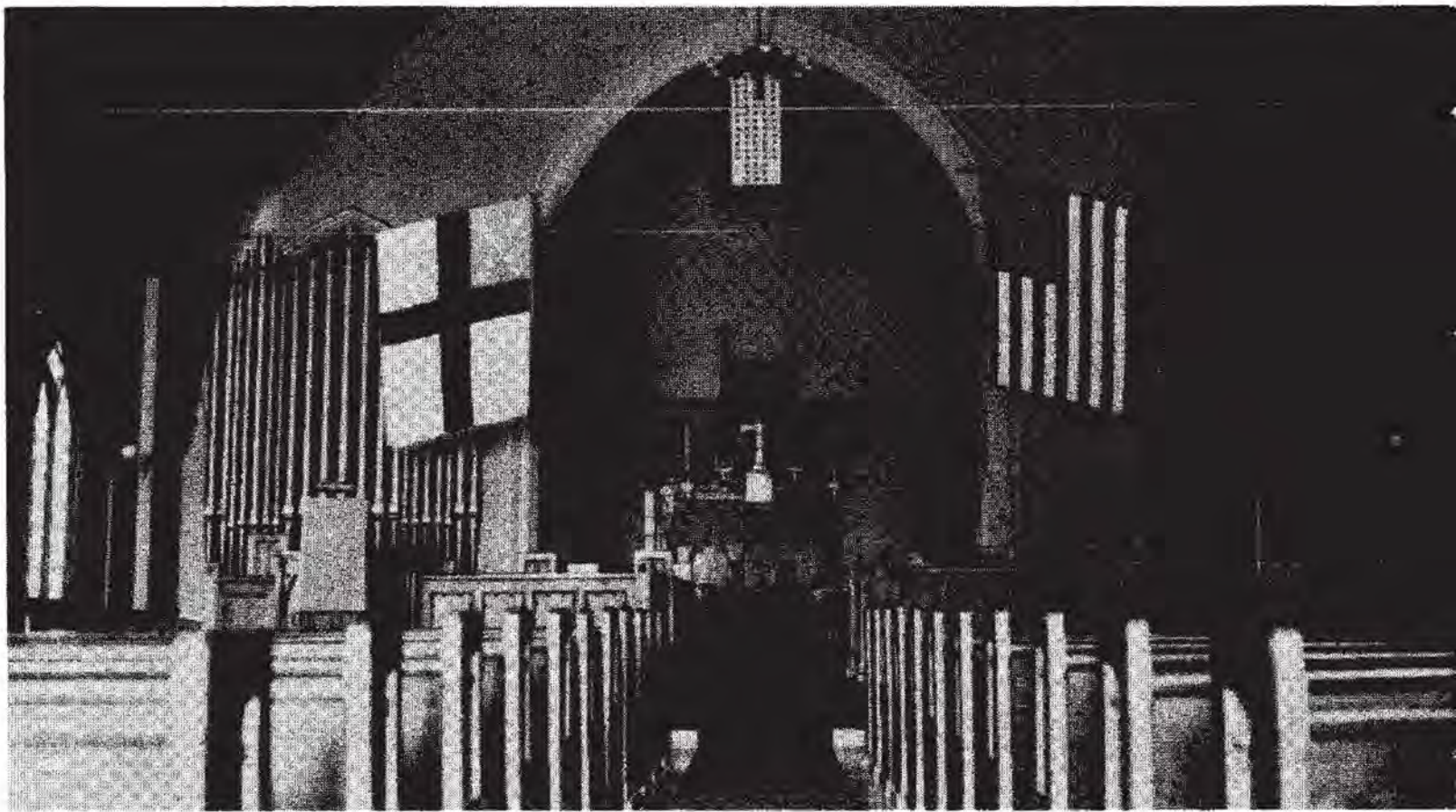
A new organ was installed in 1940-41.

Holy Rosary Church (R.C.) at Claymont. This parish was started on Jan. 7, 1920 when 17 members in the northern end of St. Patrick's parish, assembled for Mass at the home of Joel D. Gillen in Worthland. Mass was offered by the Rev. James M. Grant, D.D., assistant pastor of St. Patrick's parish. The congregation doubled on the second Sunday and on the third Sunday, Mass was said in the Community Hall at Overlook. Lenten devotions were also held in the hall.

In September, 1921, this congregation was constituted a parish with the Rev. F. X. Fitzpatrick as the first resident pastor. Work was begun in October on a new chapel, "Our Lady of Prompt Succor," and the first Mass was celebrated in the new chapel on Dec. 8, 1921. The dedication service was held on Oct. 15, 1922, with the Most Rev. John J. Monaghan, Bishop of Wilmington, officiating. He was assisted by the Very Rev. J. Francis Tucker, the Rev. T. F. Waldron and the Rev. Francis X. Fitzpatrick, the pastor.

A Sunday School was established under the guidance of sisters from the Ursuline Academy, in Wilmington.

A new church site, consisting of 6.6 acres, was purchased on July 24, 1930, on the easterly side of the Phila. Pike, facing Overlook Colony. A new stone rectory was built on this site in 1936. It was completed and opened on Sept. 25, 1936.



P. E. CHURCH OF THE ASCENSION, CLAYMONT
(Page 115)



HOLY ROSARY R. C. CHURCH, CLAYMONT
(Page 116)

HOMECOMING SERVICE: The Church of the Ascension, 3717 Philadelphia Pike in Claymont, will hold a homecoming service with Holy Eucharist, commissioning of volunteers and dedication of a historical marker starting at 9:30 a.m. Sunday. The service will be followed by a brunch.