

3.3 BACKGROUND OF THE NEW CASTLE COUNTY ALMSHOUSE AND DELAWARE STATE HOSPITAL PROPERTIES

The Holloway Campus is composed of properties that formed the basis for two separate but related institutions, the New Castle County Almshouse and the Delaware State Hospital.

The land near the Christiana River where the Holloway Campus now stands was farmland through most of the nineteenth century. The 1849 Rea and Price map shows this site as the farm of "J. & J. McCrone" with a house located adjacent to what is now US Route 13 (Figure 8). By 1868, the farm belonged to the G. Blandy family, which had a house set back from the road at the end of a lane, and a barn closer to the road (Figure 9). The Wilmington Railroad had been constructed along the rear of the current property by 1868, with a station stop called Hare's Corner located where the tracks crossed Hare's Corner Road (now US Route 13). The 1881 Hopkins map also shows the Blandy farm and its lane, house, and barn (Figure 10).

In the years prior to the Revolutionary War, the poor and indigent of Delaware and other colonies were cared for either privately by family members or publicly by a network of almshouses and jails. Many of these persons in public care suffered from mental illness, but they were typically not segregated from the rest of the population. Following the Revolution, almshouses increasingly became dumping grounds for the mentally ill, segregation of mental patients from other almshouse residents became more common, and a few institutions were founded specifically to house the insane. Conditions were generally poor, treatment attempts were minimal, and the patients were often confined or mistreated. During the nineteenth century, reformers publicized these appalling conditions in an effort to improve care for these patients, and the movement toward modern treatment and care of the mentally ill took hold (Bourque 2000; Delaware State Hospital [DSH] 1939:13).

The first almshouse in Delaware was established in Wilmington in New Castle County. In 1791, the county's trustees of the poor were appointed to care for indigent residents from throughout the state, and buildings in Wilmington at Fourth and Broom Streets were erected to house this institution (Herman 2000:124-126). Records show that cases of mental illness were present from the beginning, and by 1843, a separate building was erected specifically for mentally ill residents. Treatment was more custodial than medical, and a number of difficult "lunatic and insane" persons were removed from Delaware's poorhouses to a hospital in Philadelphia during the nineteenth century (DSH 1939:13-14).

By 1871 the Trustees of the Poor were searching for land outside of Wilmington where the indigent could be cared for. The members of the Board took this move very seriously, noting in a resolution that "the members of the board recognize the pressing necessity constantly growing upon them for the removal of the Almshouse from its present location" and felt that the move would provide better care for the comfort and health of a broader range of the county's citizens (NCCTP 1857-1874). Several farms were considered all in the vicinity of Hares Corner, including the G. McCrone property (shown on Beers' Atlas as "Valley Grove" - see Figure 9) at Hare's Corner Post Office, the Graham Blandy farm near Hares Corner Station, and the Richard Jackson farm. Offers were made for the McCrone and Blandy properties in the fall of 1871 and at a special meeting of the Board of Trustees it was reported that the owners of the McCrone farm had accepted the offer of \$125/acre (NCCTP 1857-1874). Early in 1872 the 180-acre-plus farm was rented to Thomas Appleby. The farm did not become a new location for the Almshouse, but did apparently provide employment and produce for the inmates.

Wilmington's growth by the early 1880s was such that the Almshouse was no longer in the country. In 1881, the Delaware Legislature authorized funding for a new almshouse facility in New Castle County with a separate building to care for the insane. A year later, in 1882 the Trustees of the Poor purchased the 100-acre Graham Blandy farm — the same farm they had shown interest in a decade earlier — for \$20,000 (Anonymous 1936). In 1884 two new buildings were constructed at the site by the Wilmington contractors John B. Johnson and Joseph Hyde at a cost of \$163,000. These included what were later known as the New Castle Building and the Main Building. The buildings were intended to function as structures to separately house the county's poor (New Castle Building) and the county's mentally ill (the Main Building). The buildings were first occupied in 1885, when the "inmates" from the Wilmington Almshouse were relocated to the new facility. At unknown dates, a "pesthouse" and a barn were added. It is probable that this barn was the one from the Blandy farm. The property became known as Farnhurst in 1886, when the Delaware Railroad built a station at the highway intersection (Anonymous 1936).

By 1889, a number of physicians had begun lobbying for a hospital to treat the insane, citing medical advances of the past 50 years that proved insanity could be cured with proper treatment. The Delaware General Assembly of 1889 passed a law to establish the Delaware State Hospital for the Insane, making Delaware the first U.S. state to found such a facility, and appointed three trustees from each county to oversee it (DSH 1939:14,19). The two facilities — almshouse and mental hospital — operated side by side from this date until 1933, when the County almshouses were abolished and their functions united under a state agency.

The hospital trustees purchased part of the New Castle County Almshouse facility for \$75,000 from the New Castle County trustees of the poor in August 1889. The acquired property was 10 acres and included the relatively new Main Building, which was described as "a large building, scantily furnished, in need of repairs and general overhauling" (DSH 1939:15). Both paying and public cases were admitted. By 1891, a Superintendent's House, laundry, and amusement hall were constructed, and the hospital's name was shortened to the Delaware State Hospital. The Superintendent's House still stands northwest of the Main Building. By the mid-1890s, overcrowding was apparent, and in 1897, an Annex was added to the Main Building (DSH 1939:16).

By 1904, the USGS map shows the two large buildings of the New Castle County Almshouse and the Delaware State Hospital standing side by side, with a small cluster of additional buildings surrounding them (Figure 11). The station stop at Hare's Corner had been moved east of US Route 13 and was now called Farnhurst. The Farnhurst station stop had been removed by the time the hospital and surrounding area were documented by the Federal Writers' Project in 1938 (Eckman et al. 1938:328–329).

The hospital continued to grow throughout the early 1900s, adding new buildings to separate certain patient groups and alleviate crowding as funding became available. These included the Tuberculosis Building (1902), Black Cottage (1907), and the Swift Building (1915), none of which are extant today. World War I placed stress on the hospital, which faced higher prices on supplies and ran a deficit as a result (DSH 1939:16–17).

In the second decade of the twentieth century the hospital grounds were surveyed to assess conditions and needed system improvements, and a number of infrastructure improvements were made. The Price and Price map depicts the property in 1917, showing a range of buildings and

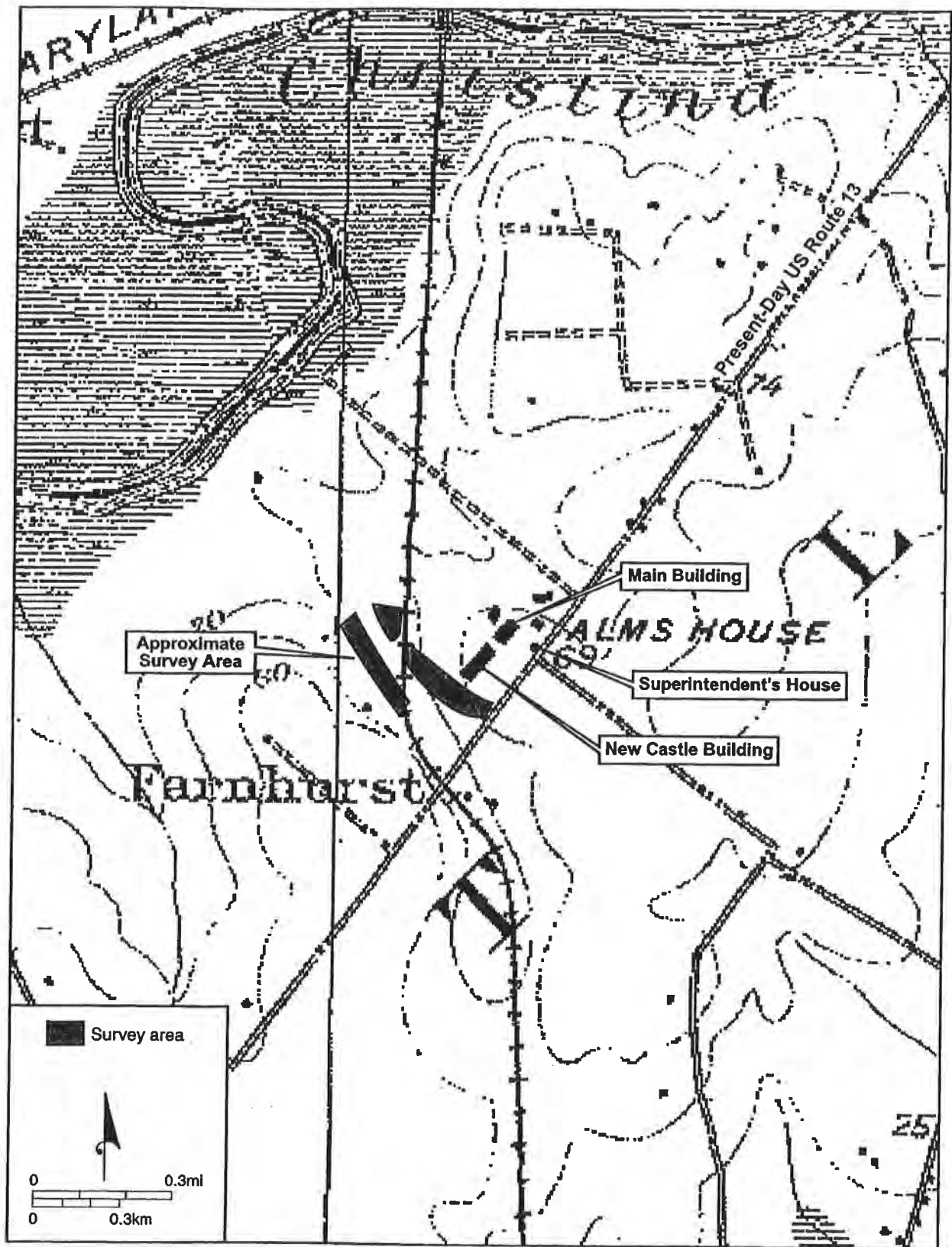


Figure 11. Survey area shown on 1904 USGS *Wilmington, Del.-N.J.* 15-minute quadrangle (USGS 1904).

landscape features such as a lake, a maze, and a cemetery (Figure 12). In the 1920s dental and occupational therapy departments were opened. Dr. M. A. Tarumianz, the hospital's medical director, was promoted to Superintendent in 1926. Shortly afterward, laboratory and X-ray facilities were installed, a nurses' training school was opened, and Delaware State Hospital began to approach the standards of a well-equipped modern hospital. In 1929, a 20-year expansion plan was developed with the approval of Gov. C. Douglass Buck, and funding was made available for construction of a Psychiatric Observation Clinic, Continued Treatment Building, and a Nurses' Home (now the Tarumianz Building) (DSH 1939:18). Most of the buildings in the 20-year plan were never built as planned, however.

During this time the adjoining Almshouse was also receiving maintenance and upgrading, but much of the attention to the facility was negative. In 1926 a publication entitled *The American Poor Farm and Its Inmates* compiled by Harry C. Evans reported that the New Castle County Almshouse was characterized as "disgraceful" (Anonymous 1926). The newspaper reported further that the New Castle facility was

A commodious brick building some 40 years old, undergoing radical repairs; insane asylum across the road. The place is a dump for derelicts of all kinds, the respectable, intelligent poor, the hobo, persons with all sorts of infectious diseases, the mental defectives, whites, negroes; women and negroes occupy separate wings. The diseased and feeble-minded mix freely with other inmates in all rooms.... There are two steel barred cages for unruly inmates (Anonymous 1926).

The early 1930s saw additional state appropriations, at least at the State Hospital, which resulted in construction of the Re-Education Building, a Triplex Residence for doctors, and new steam lines and water mains.

In 1933, the New Castle County Almshouse was closed, and its patients became wards of the state and a new state-run facility was constructed at Smyrna. The Delaware State Hospital purchased the New Castle Hospital's property that year for \$20,000, thus acquiring the New Castle Building and landholdings south of the former main drive between the New Castle and Main buildings. New Castle Building was renovated in 1937 (DSH 1939:19). At the time of acquisition, the county hospital property contained the old Blandy farm barn, part of which was renovated as a gymnasium for the patient population, and a "pesthouse," which was remodeled as offices for a new mental hygiene clinic (DSH 1939:19). The burial ground associated with the Almshouse was also abandoned. By 1934 the cemetery was described as full, with nearly 2,400 interments (Anonymous 1934). ★

In 1936, Delaware State Hospital began receiving annual allocations from the Works Progress Administration, which resulted in the addition of more buildings and improvements. Among the WPA-funded buildings erected on the campus were Kent Hall (1938), the Chapel (1939), new pigpens and a slaughterhouse for the campus farm (1939), a new employee garage (1941), and Wilmington Hall (1942) (DSH 1939:19; State Board of Trustees of the Delaware State Hospital [Annual Reports] 1940-1942). Of these, only Wilmington Hall and the Chapel are extant. Both are located in the project vicinity south of the main drive.

The war years following the bombing of Pearl Harbor were difficult for the hospital. Severe staff shortages resulted from medical personnel being called into the armed services or pursuing

defense jobs. The establishment of a Civilian Public Service Camp at the hospital in the fall of 1942 provided a small source of staff, but this was closed in 1946 and staffing levels did not rebound to prewar levels until a few years later (Annual Reports 1942–1950).

Aerial photographs from the 1920s through 1930s show that the former G. Blandy farmhouse and barn were retained through this time period (Figures 13 and 14). In 1927, the former Blandy farmhouse was depicted as an "Isolation Ward" on a Sanborn map. The 1928 aerial view (Figure 13) shows the farm complex clearly, revealing that the Blandy house was a Greek Revival hip-roofed structure with symmetrical side pavilions, and the barn was a rambling L-shaped structure surrounded by auxiliary buildings. The farm buildings were located in the southernmost part of the campus, not far from where I-295 now stands. According to the 22nd Biennial Report, the farmhouse was remodeled and a piggery was added in 1931 (Biennial Report 1930–1932; Gillies 2005:2). From at least the time of the acquisition of the county almshouse and possibly earlier, Delaware State Hospital ran a farm, which raised various grain crops, orchard fruits, garden produce, chickens, sheep, and hogs and was a source of fresh foods and occupational jobs for patients. The grounds staff included a farmer, who for many years resided with his family in the former Blandy farmhouse and oversaw the farming and gardening operations. The farm facility was documented in 1941 as containing the new slaughterhouse, piggery, a tool shed, farmhouse, main barn, garage, wagon shed, chicken coop, open cattle shed, and a frame brooder house (Annual Reports 1939–1964; Biennial Reports 1920–1940). All of these buildings were clustered near the house and barn, behind the New Castle Building in the southern section of the campus (Figure 14). In early 1942, a heater fire broke out in the barn, causing \$10,000 worth of losses, destroying the gymnasium, and killing 3 of the 34 sheep housed in its lower level (Annual Report 1942–1943). The destroyed part of the barn was apparently not rebuilt, but a small portion on its east end remained standing. In 1942 or 1943, the Old Rec Hall was constructed adjacent to the small remaining barn section to serve as a gymnasium, replacing the one destroyed in the fire. As of 1945, when an aerial view was taken, the farmhouse, remaining barn section, and Old Rec Hall were extant (Figure 15). The house was surrounded by farm fields, and a large planted garden and orchard were visible south of the barn/Old Rec Hall site. The property extended south to the railroad tracks, and no other development was visible in the southern part of the campus.

In the meantime, Dr. Tarumianz and others overseeing the hospital realized that additional on-campus housing was needed to attract and retain quality staff members. Though some housing had been built previously, it was not enough. In 1946, a row of three two-bedroom, two-story detached cottages were built for doctors near the southeast corner of the campus. These resembled average suburban housing, with good-sized rooms and screened side porches. A brick shed and an open shed were also built nearby. Farther west, beyond the Old Rec building and farmhouse, a set of five multiunit dwellings (two quadruplexes and three duplexes) were constructed for hospital employees. This housing was modest and utilitarian, constructed of concrete block. In 1954–1956, two modern ranch-style single-family houses, a large ranch-style triplex, and a small shed were added to the doctors' cluster, and three additional ranch-style duplexes were constructed in the employee cluster. In addition, the Gawthrop Building, intended to house patients unable to physically care for themselves, was built a short distance northwest of the employee cluster in 1952. Most of these buildings are visible in the 1956 aerial view (Figure 16).

The remaining section of the Blandy barn burned down in January 1951 after employees' children started a fire in it. By this time, it was used as storage and was not a drastic loss (Annual Report 1950–1951). A large warehouse was built northwest of the Old Rec Hall in 1955, and a road was

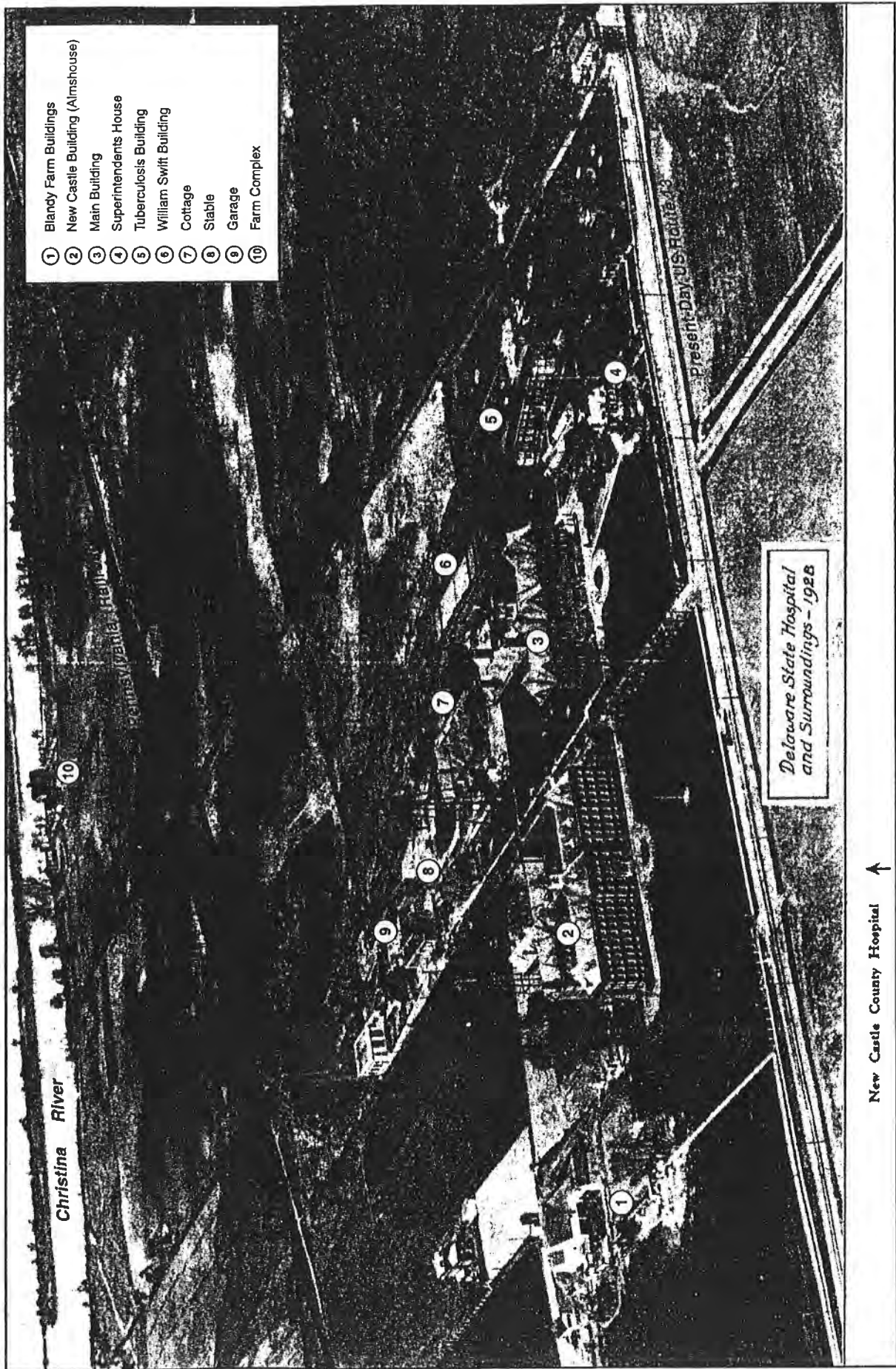
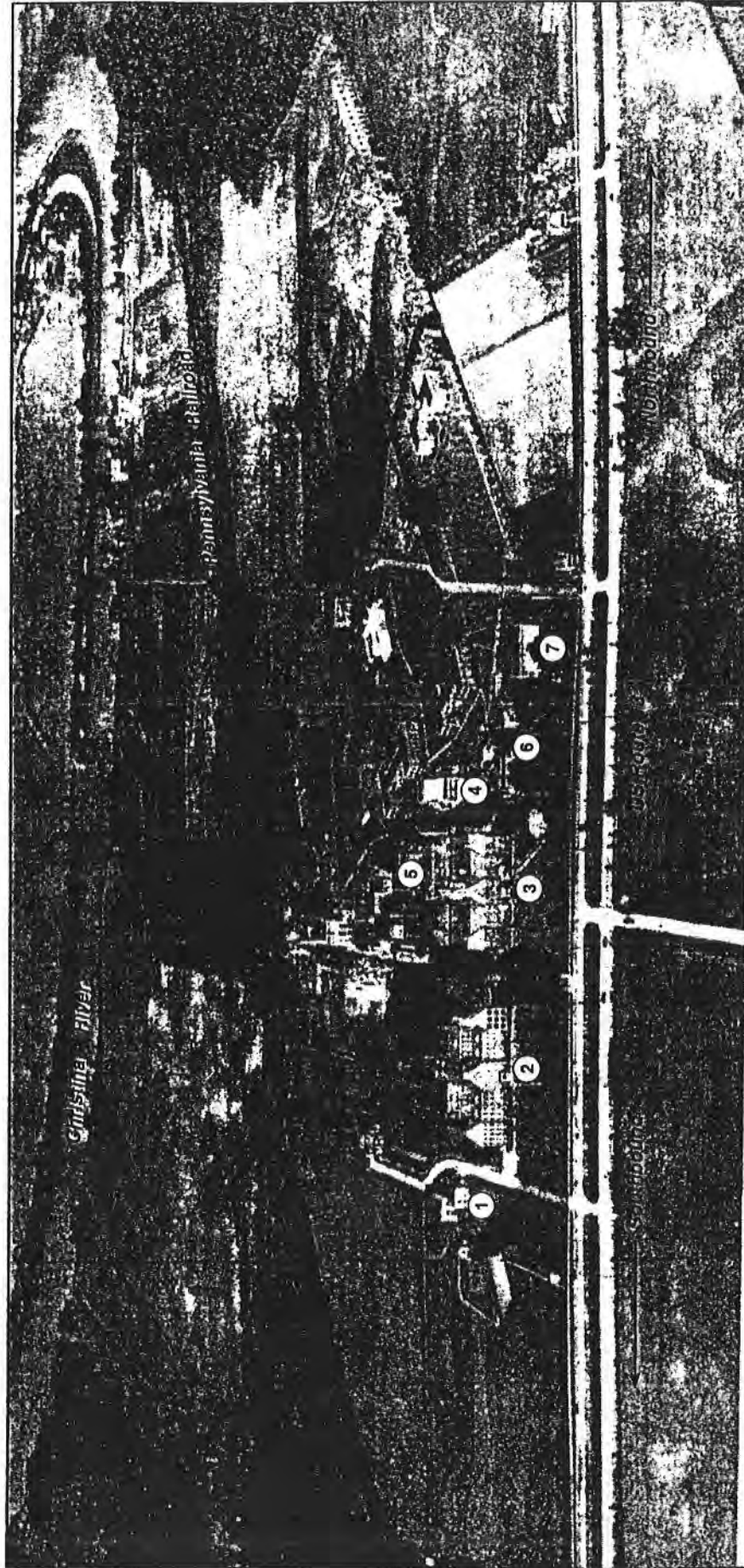


Figure 13. Aerial photo of Delaware State Hospital and New Castle County Almshouse, 1928, from the 20th Biennial Report of the Trustees of Delaware State Hospital (Biennial Reports 1926-1928). The nineteenth-century Blandy Farm buildings are on the left, behind the New Castle Building.



Delaware State Hospital 1938

- ① Former Blandy Farm
- ② New Castle Building
- ③ Main Building
- ④ Swift Building
- ⑤ Black Cottage
- ⑥ Sussex Hall
- ⑦ Nurse's Home

Figure 14. Aerial photo of Delaware State Hospital, 1938, from the 25th Biennial Report of the Trustees of Delaware State Hospital (Biennial Reports 1936-1938). Much of the southern end of the campus is occupied by farm fields and orchards.

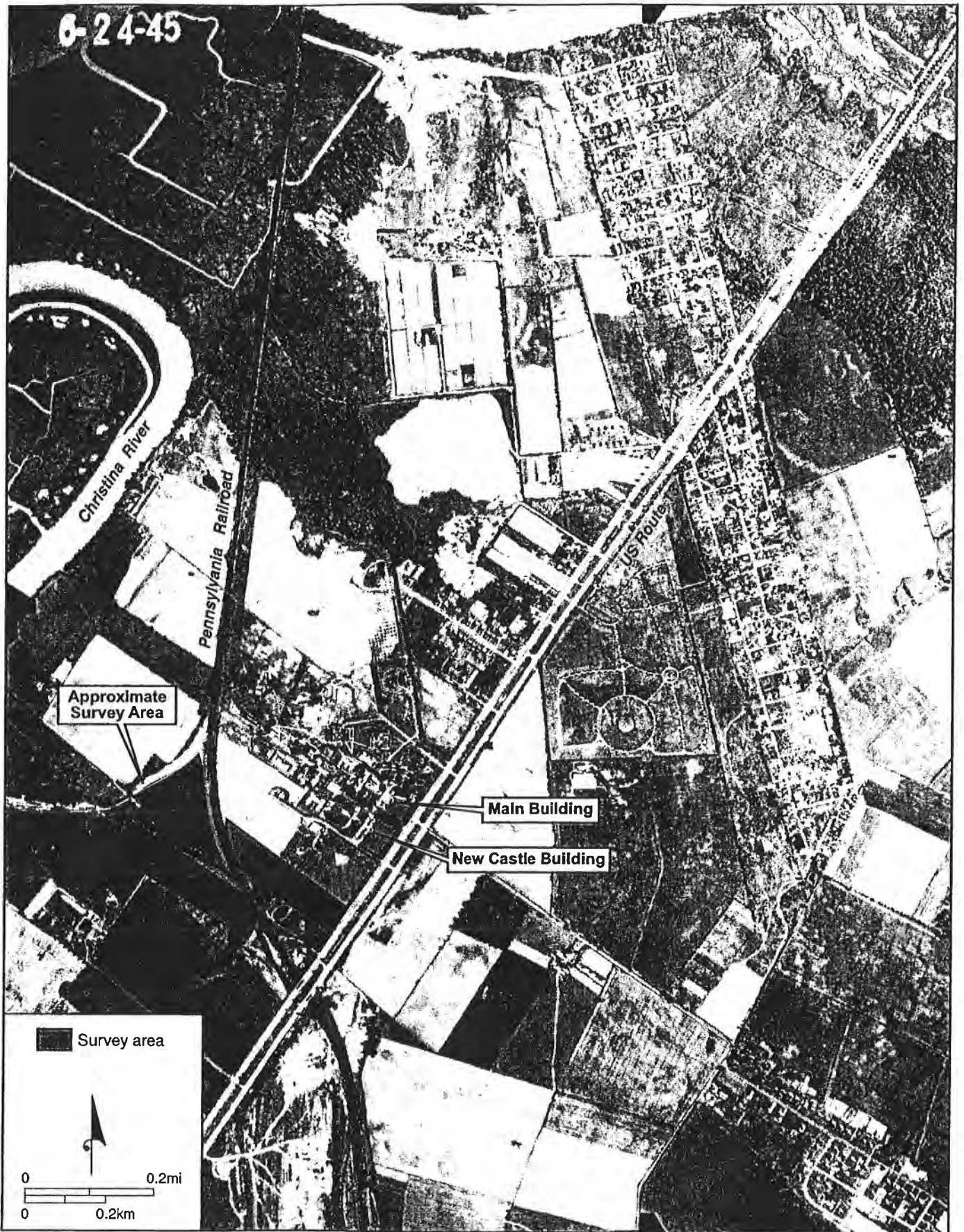


Figure 15. Aerial view showing Delaware State Hospital campus, 1945 (Spatial Analysis Lab 1945). The south end of the campus is still used as a farm and has not been developed, with the exception of Wilmington Hall and the Old Rec Hall.

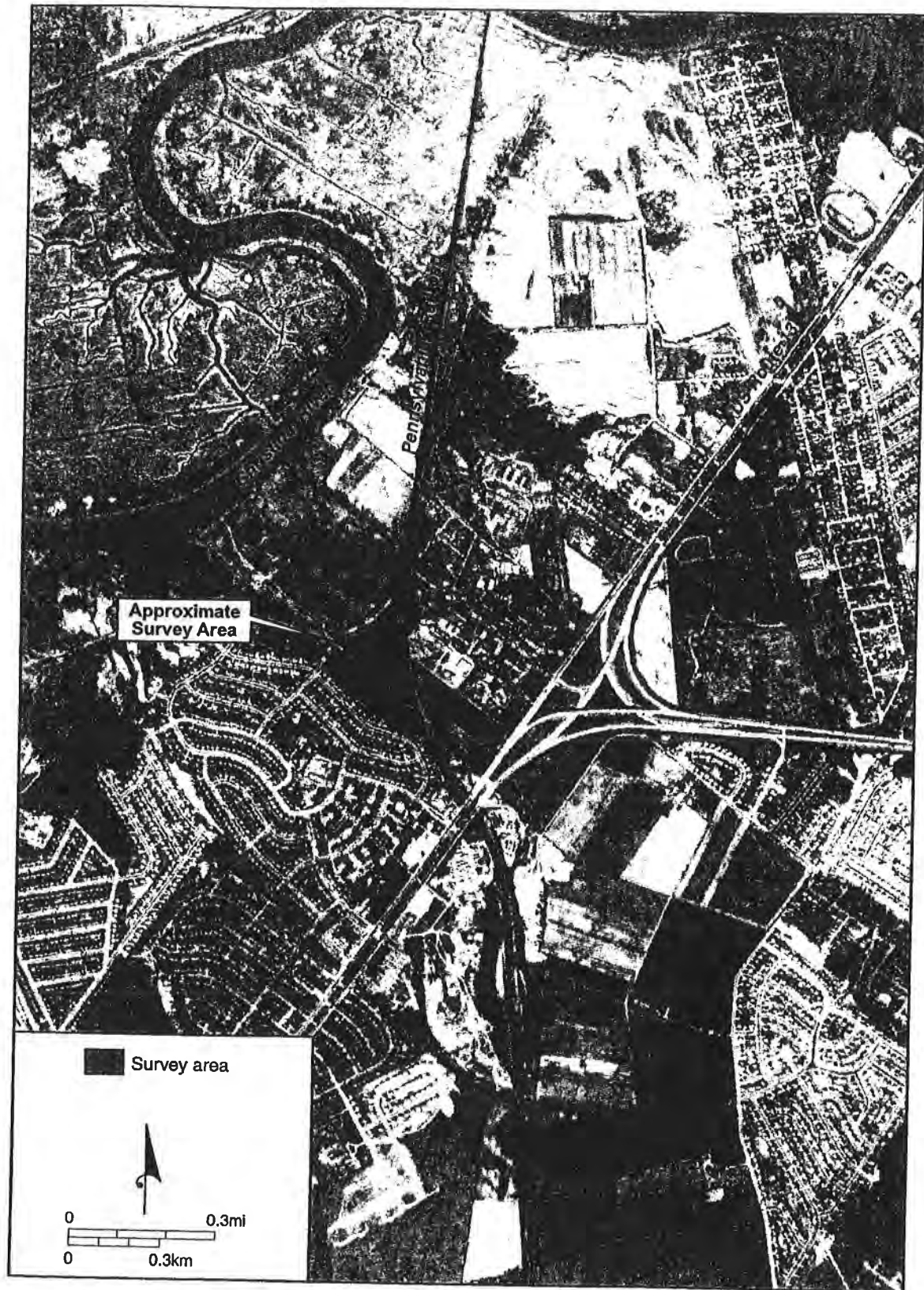


Figure 16. Aerial view showing Delaware State Hospital campus, 1956 (Spatial Analysis Lab 1956). The farm operation has shrunk, the old barn has disappeared, and numerous new buildings have been erected for housing and other purposes on the south end of the campus.

paved between the two buildings where the old barn had been. A Commissary or Clothing Building was added next to Wilmington Hall around the same time. The farmhouse still stood immediately southeast of the employee housing cluster and was visible in the 1956 aerial (Figure 16). Despite the loss of the barn, the farm operation continued into 1964, although it was scaled back dramatically during the 1950s. The 1956 aerial (Figure 16) shows that the orchards and grain fields seen in 1945 had disappeared. Annual reports indicate that the farm had stopped raising grain, orchard fruits, and sheep by the 1951 season, the amount of garden produce declined during the 1950s, and the hog slaughterhouse burned down in 1957 (Annual Reports 1950–1959).

The 1964–1965 annual report indicates that the farm was felt to be of little economic or therapeutic value and was to be phased out immediately, and plans were being drawn for a new facility to replace the 1880s New Castle Building, the first institutional building on the campus (Annual Report 1964–1965). The New Castle Building was seriously damaged by fire in 1966 and subsequently razed in 1967 (Martin 1966; Burroughs and Frank 1966; Frank 1967). The site of this former building is now a parking lot north of the doctors' residential cluster.

A new kitchen and a new patient residential facility were built in the southern part of the campus in 1967. It is unknown when the Blandy farmhouse was finally taken down, but the current Laundry Building, constructed in 1973, occupies its former site. Most of the extensive post-1960 construction on the Holloway Campus, including numerous large buildings, occurred north of the main drive, which was eventually closed off in favor of a new circle entrance to the north of the Main Building. As the primary axis of the campus shifted northward to these newer buildings and the facility underwent changes, the mid-twentieth-century structures on the south end of the campus became remote and obsolete and fell into disuse.

The Delaware State Hospital became subject to reorganizations within the state government. It had been governed since the beginning by a State Board of Trustees. In 1964, the hospital's State Board of Trustees was reorganized to become the Board of Trustees for the State Department of Mental Health (Gillies 2005:3). Another government reorganization in 1969 created a state Department of Health and Social Services, and the hospital was subsequently run by this department's Division of Mental Health instead of by trustees (Gillies 2005:3–4). Further reorganizations ensued, and today the hospital facility is formally known as the Herman M. Holloway Sr. Campus of Delaware Health and Social Services. In addition to a psychiatric inpatient facility, it currently houses administrative, business, and outpatient client functions for Delaware Health and Social Services (DHSS website 2005).

3.4 BURIAL GROUNDS AT FARNHURST

The two institutions located at Farnhurst — The New Castle County Almshouse and the Delaware State Hospital — have had at various times separate, multiple, and concurrent burial grounds. While the Almshouse Burial Ground, or Potter's Field, is the focus of this study since it is situated within the proposed area of construction, background information was compiled for the cemeteries associated with both institutions. Each will be discussed below.

3.4.1 DELAWARE STATE HOSPITAL

The Delaware State Hospital cemetery was established circa 1891, shortly after the institution was established in 1888. The 1917 Price and Price map of the State Hospital grounds (Figure 12) shows a large circular area established as (or planned to serve as) a cemetery with an associated

chapel situated approximately 300 feet west-northwest of the Main Building Annex. This cemetery occupied an area of approximately 160 feet by 120 feet and contained a path system composed of concentric rings. By 1934 this area was occupied by the structure identified as the Utility Building (Figure 17).

A second cemetery area is initially depicted in 1934, shown as a small circle northwest of the main complex of buildings and east of the railroad tracks (Figure 17). This cemetery is apparently depicted on the 1997 USGS quadrangle map as a triangular area adjoining the railroad tracks marked with a cemetery symbol, and a second cemetery is shown a short distance north and on the west side of the tracks (Figure 2).

The Delaware State Hospital burial register, housed at the Delaware Public Archives, listed the deaths and on-site burial of people starting with the first interment, which occurred in September 1891, and ending with a burial in June 1983 (Delaware State Hospital Cemetery 1891–1983). For purposes of estimating the likely population of the cemetery at a number of potentially significant dates, the population of the cemetery was recorded for the years ending including 1933, 1958, 1959, and 1960; these last three were chosen since the date of construction for I-295 is coincident. The number of interments at the end of 1933 was 450, at the end of 1958 it was 663, at the end of 1959 it was 671, and at the end of 1960 it stood at 680. These numbers suggest that an average of eight to ten people per year were buried on the hospital grounds. The hospital's annual report for 1960 lists 146 deaths for that year, nine of which were buried on-site. Monthly and annual reports for the Delaware State Hospital for the period do not mention the disinterment or removal of burials for any of these cemeteries.

3.4.2 NEW CASTLE COUNTY ALMSHOUSE

Based on the information provided by minute books, maps, aerials, newspapers, and other records, the Almshouse burial ground site came into existence circa 1884, at about the time that the County Almshouse was relocated from Wilmington. Specific treatment or placement of the interments was not mentioned in the minutes of the Almshouse Trustees for nearly a decade, but it seems clear from the records that a cemetery was in existence on the property during this period. There was some confusion about authorization of burials and even how many interments there were. In March 1894 the Trustees passed a resolution that "no burials be allowed at the Almshouse Cemetery without an Order from some one of the Trustees to the Superintendent." At the same time the Trustees instructed the Superintendent "to furnish the Board with a report of the number of bodies received, coffins furnished and names of parties buried by him and that the Secretary forward the same to the [County] Levy Court" (NCCTP 1887–1907:209).

The burial ground was again an issue in May 1895, when the Trustees expressed concern that conditions in the potter's field needed improvement, and they directed the Superintendent to level the ground and properly mark the burials (NCCTP 1887–1907:245). In July of the same year the Superintendent was authorized to purchase numbered stones "to mark the cemetery on south side of the railroad tracks" (NCCTP 1887–1907:249). By August 1895 it was reported in the minutes that the first consignment of stones, measuring 5" x 5" x 18" and bearing a consecutive number from 1 to 450, had been supplied (NCCTP 1887–1907:251). After 1895, marker stones were purchased periodically by the Superintendent, as in August 1903 when an additional 400 stones were bought (NCCTP 1887–1907:486).

County almshouses in all three counties were discontinued in 1933, and a state-operated facility in Smyrna was established. A newspaper article published in the Wilmington paper in 1934 (Anonymous 1934) noted that the number of burials in the cemetery had reached 2,376 (Appendix II). This article contains the only photograph of the burial ground found by the project team to date. In that year it was reported that the Almshouse burial ground was full and could accept no more burials.

The DeIDOT archives project files for FAI-1 (the I-295 project) holds a real estate appraisal dated September 16, 1957, of Delaware State Hospital-owned land that the State Highway Department wanted to acquire for the new Interstate (Hickman 1957). That appraisal was done undertaken by Mr. Robert Hickman of the Emmett S. Hickman Company, realtors of Wilmington, Delaware. The appraisal described five separate parcels that were valued at \$164,500.00.

The parcel designated as "Plot A" was described by Hickman and was subdivided into two parcels: parcels 2 and 2A (Figure 18). Parcel 2A was described as being in "agricultural use" for the Delaware State Hospital and as containing approximately 6 acres. Parcel 2 was described as containing 1 to 2 acres. Hickman related that

Plot A is traversed from almost its South corner to its North corner by the Pennsylvania Railroad. To the Northwest of this line lie the parcel of lands designated as Parcel 2 and Parcel 2-A. Within Parcel 2 is Potter's Field, which was used as a burial ground, but which no interments have taken place since approximately 1933. [The] Potter's Field occupied approximately one to two acres of Parcel 2. A portion of Parcel 2 is wooded.... Access to both Parcel[s] 2 and 2-A is now across a dirt lane which leads across the Pennsylvania Railroad tracks. This lane lies within the proposed taking [for I-295] and will have to be relocated so that access to Parcel 2-A may be maintained (Hickman 1957:2).

Also found in the DELDOT archive is an unexecuted contractual agreement drawn up by the State Highway Department's legal section (Purchase Agreement 1958). The agreement, dated 1958, offered the Delaware State Hospital two options under which the State Highway Department would purchase the property. The first offer was for the purchase of the land "as is," for the sum of \$168,000.00 and an additional \$10,000.00 for the construction of a new recreation and picnic area. The second option was for the sum of \$225,000.00, "...for which payment the Hospital will relieve the SHD [State Highway Department] of all responsibilities incident to or in connection with the burial grounds for the indigent. The selection of either plan to be at the election of the Hospital" (Purchase Agreement 1958:2). A second clause associated with these offers was that the Hospital would provide space for the relocation of the burial ground "...at a site to be selected by the Hospital. The area assigned for this purpose will be properly fenced with lawn height chain link fence. Said fencing will be provided at the sole cost and expense of the SHD" (Purchase Agreement 1958:2).

The property-taking map of the FAI-I corridor is the only map that clearly depicts the burial ground area and shows that its location is in the proposed right-of-way for the new turnpike road (Figure 19). The agreement between the Hospital and the Highway departments was never executed, and a newspaper report in the Wilmington paper dated September 11, 1958, provides the explanation (Appendix II). With the headline of "Embankment to Cover Old Potter's Field Area," the paper reported that a search of available state and county records was unable to

uncover any information relative to the names of the people interred at the cemetery. The Highway Department advertised for next-of-kin, but no one came forward to claim any remains. The chief engineer for the Highway Department, Mr. Richard A. Haber, stated that "in the absence of identity of the deceased or any claims for the bodies by relatives, the department plans to cover the cemetery area with an earth embankment" (Anonymous 1958). It was further noted that the interments would not be disturbed and that a portion of the burial ground was being "buried deeper" (Anonymous 1958). While Chief Engineer Haber was quoted in the paper, the announcement of the treatment of the burial ground was actually made by Mr. William J. Miller Jr., deputy chief engineer.

As part of the background review, JMA historian Wade Catts interviewed former DelDOT engineer Mr. Joseph Wutka, former DelDOT real estate manager Mr. Harvey Berry, and Mr. William J. Miller Jr., the former deputy engineer for the State Highway Department and the individual credited with the 1958 newspaper announcement. Mr. Berry recalled that the burials had been removed, contrary to the recollections of the other interviewees. Both Wutka and Miller confirmed that a portion of the Almshouse burial ground was covered with the highway embankment during the construction of the road section known as FAI-I. Indeed, Mr. Miller had a strong recollection of the circumstances regarding the cemetery and the decision reached to construct the embankment. Mr. Berry and Mr. Miller both recalled that an ecumenical religious ceremony was performed at the burial ground to the commencement of road construction. As noted in the Section 2.1 (see above) local residents added little pertinent oral information regarding the burial ground or the road construction.

The New Castle County Hospital Death Book dating to the period from 1926 to 1932 contains the names, dates of death, race, age, grave number, nature of disease, location of interment, and name of undertaker (NCCTP 1926-1932). The records in this book indicate that the burial ground referred to as "Farnhurst" received 737 interments during the seven-year period, and grave numbers for interred individuals were issued from 1901 to 2312, with several numbers reissued or reused, such as 1633, 1665, 1761, and 1840.

The foregoing discussion of the New Castle County Almshouse Burial Ground or Potter's Field leads to the conclusion that the burial ground was in use from approximately 1884 to 1934, a period of approximately 50 years. After the last interment in 1934 the cemetery was allowed to fall into disuse and was not maintained (compare Figures 20-22). The construction of I-295 resulted in the placement of a road embankment above approximately two-thirds of the property. Information provided by interviews and documentary research reveals that the interments situated within the right-of-way for the new turnpike road were not removed or relocated but were buried. A small portion of the cemetery was unaffected by the road construction and is still intact.