

#10  
**DOVER**  
DELAWARE

**DOVER**  
DELAWARE



The Capital City of the First State The Capital City of the First State



Residence Dr. Cahall Sipple Facing Silver Lake, Dover



State St. Looking South, Dover



Presbyterian Church, Dover

### foreword

*THIS is a booklet of "brass tacks" information for busy executives. Compiled from authentic sources, it is condensed to give only the high spots and beauty in and around the city of Dover, also the manufacturing and distributing opportunities which will enable you to visualize the actual trade conditions in this rich and growing country. Opportunities here for particular types of industry will be outlined in detail in an exhaustive survey to executives who make inquiry to the Chamber of Commerce. On the following pages you get only a glimpse—Dover invites you to come and see for yourself. You will receive a cordial welcome from people, hospitable by nature and training.*



Kent County Court House, Dover



Residence of Dr. Frank Hall, Dover



Park and Silver Lake, Dover

JAN 26 1944

# DOVER

*The Capital City of the First State*  
DELAWARE

## HISTORICAL FACTS

DOVER, the capital of the State of Delaware, is a busy legislative and industrial center whose history dates back to 1683, when William Penn ordered the town laid out. It was located half way between the north and south boundaries of the State. In 1699, according to history, permission was received from Philadelphia, for the formal erection of the town to be called Dover. In that year a court house was erected on the ground now occupied by the Kent County Court House. In 1717, the Dover Green was laid out, from which the sons of Delaware marched to the war in 1776, and which even until today remains unchanged. In 1722 the old court house was abandoned, and converted into the Old King George Tavern, and the new court house, located on the site of the present State House, was built. Although alterations and additions have been made to this old court house, it remains practically the same as it was more than two hundred years ago, and is today the second oldest state house in the country. Its walls are adorned

with rare paintings of Delaware's famous sons and the principal epochs of Delaware's History. The Hall of Records in which are collected all the important historical documents of the State from the time of its founding is open to visitors each week day.

There are many other old colonial buildings in Dover besides the State House. The Ridgely home built in 1728, the Lockerman House, built 1746, the old home of Caesar Rodney still in a good state of preservation, all monuments to the builders of the colonial period. In the cemeteries of Dover are to be found the graves of many of Delaware's illustrious sons, including Caesar Rodney, signer of the Declaration of Independence, John M. Clayton, the Secretary of State of the Nation, and Col. John Hazlet, a famous hero of the Revolutionary War. The traditions of the old Delaware families, the Rodneys; the Bayards, the Saulsburies, the Ridgelys, the Claytons and the McKeanes and many others are still heard in and about the capital.



South Part of Silver Lake, Dover



## DOVER, DELAWARE

### CLIMATE

THE climate of Dover and the surrounding territory is quite similar to that of the entire Delmarva Peninsula, and when considered "all the year around" is one of the most delightful in the United States.

The average summer temperature is about 76°, and the average temperature during the coldest part of our winter is about 34°. This is due to the tempering influences of nearby bodies of water and to its proximity to the warm Gulf Stream. The annual rainfall averages 43 inches, and its distribution throughout the year is almost ideal. The average annual snowfall is small, and, as a rule, it does not remain on the ground for any great length of time. The normal growing season is approximately 187 days in length, as the average date of the last killing frost in the spring is April 20, and that of the first heavy frost in the fall is October 24. There are never any cyclones, floods, blizzards or earthquakes.



First National Bank, Dover



Richardson & Robbins Plant, Dover, Del.



New Warehouse of J. A. Frear & Sons, Dover



Office and First Warehouse of J. A. Frear & Sons, Dover



## The Capital City of the First State

### TRANSPORTATION

DOVER is on the main line of the Delaware Division of the Pennsylvania Railroad, and on a paved State Highway. There are from 75 to 100 trains daily, 14 of them being passenger, and bus service extends as far north as Wilmington and south to the ocean at Rehoboth Beach, Delaware, and to Salisbury, Maryland.

Daily motor truck freight service is also available covering practically the entire Peninsula.

The city is on the most direct and "shortest-by-a-day" all improved route connecting the North Atlantic States with the Southland. In fact it is connected in all directions with a network of improved highways and is within twenty-four hours of one-half the population of the United States. Its situation on the St. Jones River makes it accessible by pleasure craft to the Delaware Bay and Atlantic Ocean.

### GOVERNMENT

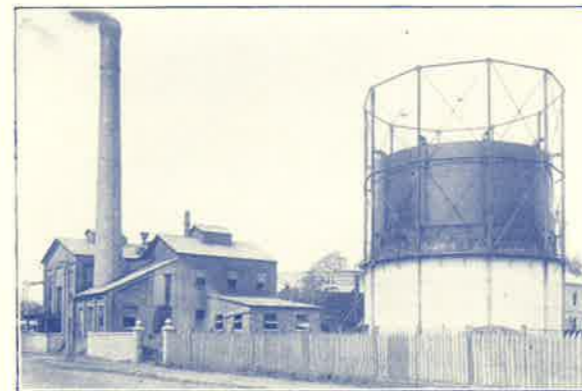
DOVER operates under a modified form of City Manager government. The legislative



Pennsylvania R. R. Station, Dover



Service Ice and Cold Storage Plant, Dover



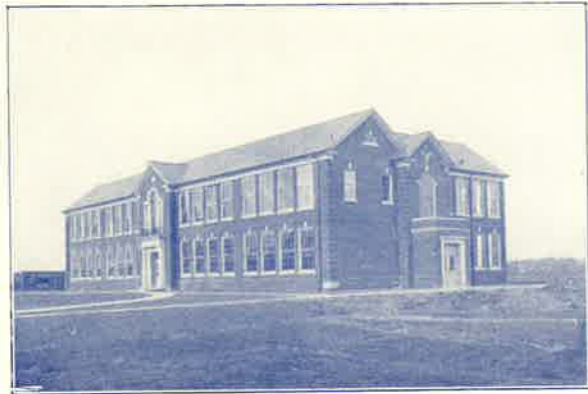
Plant of Dover Gas Light Co.



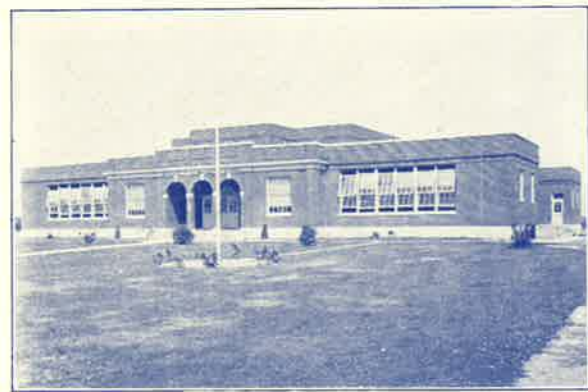
East Coast Ice & Storage, Inc.



DOVER, DELAWARE



New Building at Colored College, Dover



School for Colored, Dover

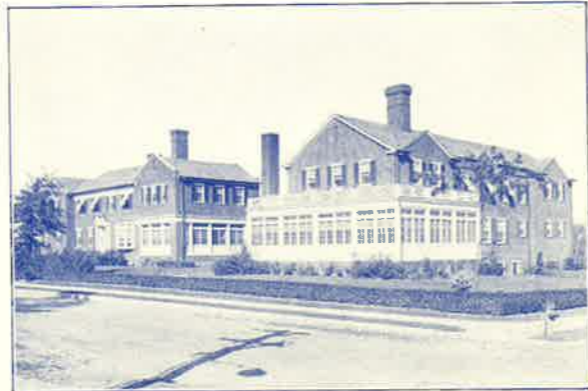


Colored College Campus, North of Dover

branch is composed of the Mayor and Council who serve without salary, while the Administrative branch is under a paid City Manager.

Dover owns and operates her own utilities. The electric plant is modern in every detail. Equipped with water-tube boilers, force draft underfeed stokers and automatic feedwater regulation, enables the generation of steam at the highest efficiency. The generating room is equipped with the most modern turbo-generators, surface condensers and automatic voltage regulation. Current is generated at 2300 volts and distributed at that voltage over the entire city and surrounding country. It is sold at a top rate of 10 cents with power as low as two cents per K. W. H. The service is un failing, as the power-house is in duplicate, giving a source of reliable supply.

The water works is in conjunction with the electric plant. Water is from deep wells, furnishing an un failing supply of 100% pure water. Dover has twenty-seven miles of pipe lines, ranging from 14" to



Cottages, Elizabeth W. Murphey School, Dover



The Capital City of the First State

4", with a 100,000 gal. elevated tank for reserve. Practically 100% of her residences are connected to the water system. Ample fire hydrants are distributed over the entire city, and the best of fire protection therefore exists.

The streets of Dover are better lighted than any city of its size on the Eastern Shore. Three of the streets are entirely illuminated with ornamental white-way lighting standards and no poles or wires are on these streets. Other streets are partly illuminated in this way, while all streets are well lighted.

Over fourteen miles of hard surfaced streets are now in use. The street and sewer department is equipped with power sweepers and all modern apparatus for maintaining these streets and sewers in the best of condition. You will always find the streets clean and beautifully shaded. The equipment is entirely motorized and all trash, garbage, ashes, etc., are hauled free weekly. The entire city is supplied with both storm and sanitary sewers having pipes as large as 48" in diameter.



Bank of Delaware Trust Co., Dover



People's Christian Church, Dover



Elizabeth W. Murphey School Administration and Infirmary



Post Office, Dover



DOVER, DELAWARE

The Capital City of the First State



Dover Public School

SCHOOLS

A NEW combined Grade and High School has recently been built in Dover at a cost of approximately \$250,000. The school offers courses in all branches usually taught in the best High Schools. It has good athletic equipment and takes a real interest in the development of the body as well as the mind of the student. Social activities of the school and student body are numerous and on a high plane.

The Wesley Collegiate Institute, a preparatory school is located in the heart of the city and is rated as one of the best schools of its type in the State.

Situated on the outskirts of the city is the State College for Colored Students as well as the Booker T. Washington School, a separate public school for colored children.

About an hour's ride from Dover, at Newark, is the University of Delaware, which is co-educational. This is a State Institution, rated among the best in the country and free to Delaware students.



St. Paul's M. E. Church, Dover

First Baptist Church, Dover



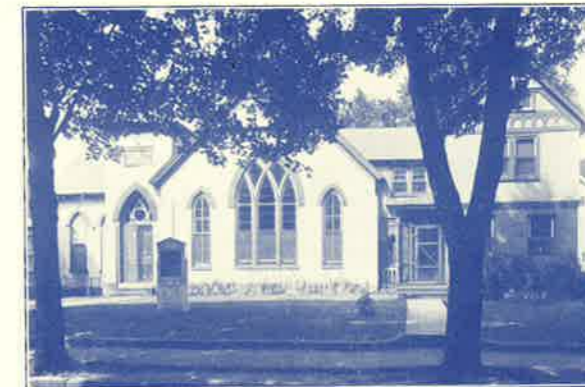
Hotel Richardson, Dover

Wesley M. E. Church, Dover



Catholic Church, Dover

Hotel Bayard, Dover



M. P. Church, Dover

CHURCHES

IN THE development of Dover as a thriving city of business and industry, the spiritual side of the community life has not been overlooked. Dover is a city of many churches, some of them having unusually beautiful and commodious edifices. They are presided over by well-informed and forceful ministers who are actively engaged in promoting every good enterprise that looks to the betterment of the city.

INSTITUTIONS

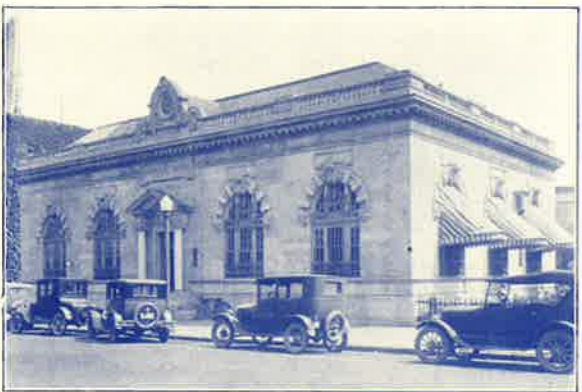
THE new Kent General Hospital, a community enterprise, containing 35 rooms is one of the best equipped hospitals in lower Delaware. It serves not only Dover but the entire county as well, and is partly maintained by income from endowments and public subscriptions.

The Elizabeth W. Murphey School, Inc., is a unique institution located here and given to the community by the late Sanford S. Murphey. It is for the use without charge of children whose parents are not

DOVER, DELAWARE



Kent General Hospital, Dover



Farmers Bank, Dover



Wesley Collegiate Institute, Dover

able to give them proper advantages, and its policy is to endeavor to give its children every parental advantage, even to the extent of a college education. The school is heavily endowed and the board of directors is composed of the leading citizens of the community. No indigent or unfortunate family of the county therefore need fear for the welfare of its children.

HOTELS

DOVER has good hotel facilities. The Richardson Hotel offers accommodations which compare favorably with those of cities of like size. In addition there are smaller hotels which also offer clean and comfortable accommodations at reasonable rates; prominently among these are the Hotel Bayard, Cook's Hotel, Hotel Bell, and several smaller hotels with ample room to take care of the summer vacationists.

THEATRES

THE city has two theaters. The new Dover Opera House recently remodeled at a cost of over \$100,000 is said to be the



Dover Water Works and Electric Plant

The Capital City of the First State

last word in modern theater construction. The Temple Theater, a smaller moving picture house is under the same management.

RECREATIONAL

THE Mapledale Country Club located about one mile west of Dover has proven to be quite a factor in the social life of the community. The attractive club house and fine nine hole Golf Course is a center of attraction for the 200 members.

Silver Lake, located near the city, is a famous fishing place, and Little Creek and Bowers Beach to the east are well known to the people of Delaware and other states who indulge in fishing and crabbing. Oysters are in abundance at these resorts and the towns have achieved great fame on account of the fishing and oyster industries.

The Bays and Inlets near Dover are the home of the Canvasback Ducks and the stopping places of Mallard, Blue and Green-winged Teal and other ducks. Quail



Fishing Boats on River at Bowers



Richardson & Robbins Plant, Dover, Del.



Ridgely House, Dover



Oyster Fleet and Motor Boats at Little Creek

DOVER, DELAWARE



Pilgrim Holiness Church, Dover



Armory, Dover



Lockerman St. Looking West, Dover



Lutheran Church, Dover

and rabbits are numerous and fox hunting and coon hunting are favorite sports.

AGRICULTURAL

DOVER is situated in the center of a fertile agricultural section of the State, where the land is practically level, and the soil is of a sandy loam character which is very responsive to modern farming practices for growing all kinds of crops.

Throughout the area surrounding Dover are numerous commercial apple and peach orchards and grape vineyards, in addition to the many farms that are adapted to the growing of grain crops and tomatoes. This section also offers excellent opportunities for dairy farming and the raising of poultry, as well as all kinds of truck.

The total value of all farm crops in Kent County, including our most important ones such as corn, wheat, soybeans and tomatoes, amounts to approximately \$4,500,000, with an additional value of \$2,000,000 for our apple, peach and grape crops.

The Capital City of the First State

The poultry industry, which has been expanding very rapidly during the past five years, represents a total value of \$5,500,000 for poultry and the sale of eggs.

All dairy products such as whole milk, cream, and butter, sold in the county, return an income of almost \$1,000,000 annually, which equals practically one-half the value of all dairy cattle.

Taking into consideration all of the agricultural products and livestock in Kent County, we have an aggregate value of at least \$15,000,000 which indicates that this county is one of the leading farming sections in the east.

A SUBSTANTIAL COMMUNITY

The final test of a permanent work of any community is the substantial developments in its area, its latent possibilities, its citizenship, its location and its financial resources.

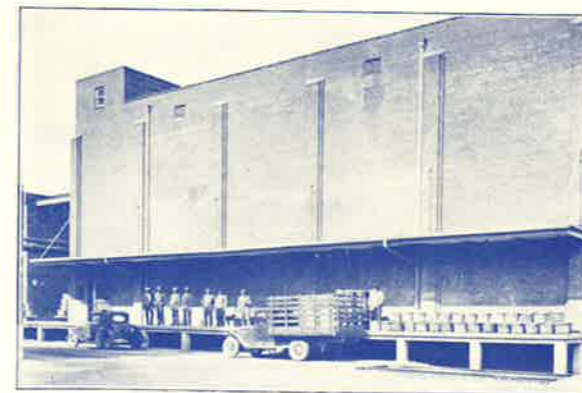
The combined statement of the three Dover Banks as of June 29, 1929, shows total de-



Sinclair Oil Tanks, Dover



E. L. Jones & Co., Inc., Plant, Dover, Del.



East Coast Ice & Storage, Inc.



Tomatoes at Factory of F. Romeo and Co., Dover



DOVER, DELAWARE



Farmers Cooperative Canning Plant, Dover



Delmarva Warehouses, Inc., Warehouse No. 1, Dover

posits of \$17,889,647.82. These accounts are carried by home owners, manufacturers, farmers and business concerns. The city has two Building and Loan Associations which are functioning well in aiding to provide more homes. Dover has a property valuation of approximately \$7,500,000.00.

Owing to its location and its accessibility many travelling men make it their headquarters. It is a jobbing center for groceries and produce, and the main retail shopping center for a trading radius of twenty miles.

The city tax rate is 95c on \$100.00 of assessed valuation.

The average weekly payroll is \$85,000.00.

Last but not least the police and fire protection is excellent, there having just been a reduction in the basic insurance rate.



Robbin's Hose House, Dover



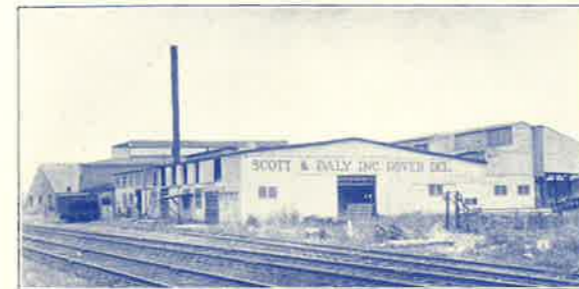
Delmarva Ice Cream Co., Inc., Plant, Dover, Del.



Brick Plant, Dover



The Capital City of the First State



Canning Plant, Scott & Daly, Dover



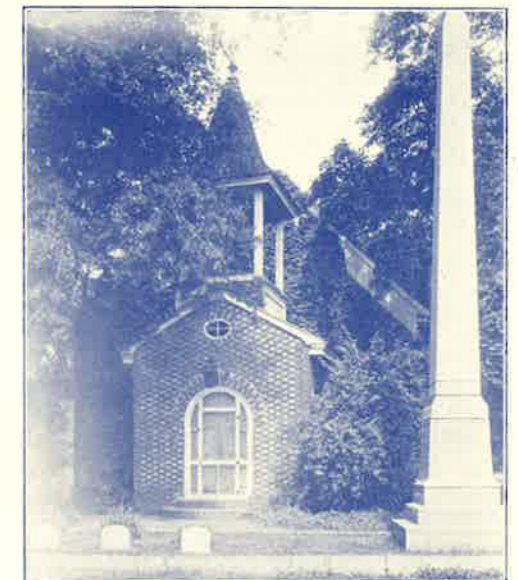
Layton & Co., Inc., Wholesale Grocery Warehouses, Dover



Dover Opera House

FOR YOUR INTEREST

Observe our excellent public buildings, beautiful homes, up-to-date schools and churches, the attractive window displays in our retail establishments, the well-paved and sanitary condition of our streets, and you will agree that Dover should be proud to be known as "The Capital City of the First State."



Christ Episcopal Church, Dover



Country Club, West of Dover



View of Gulf, Texaco and Holt Oil Tanks, Dover

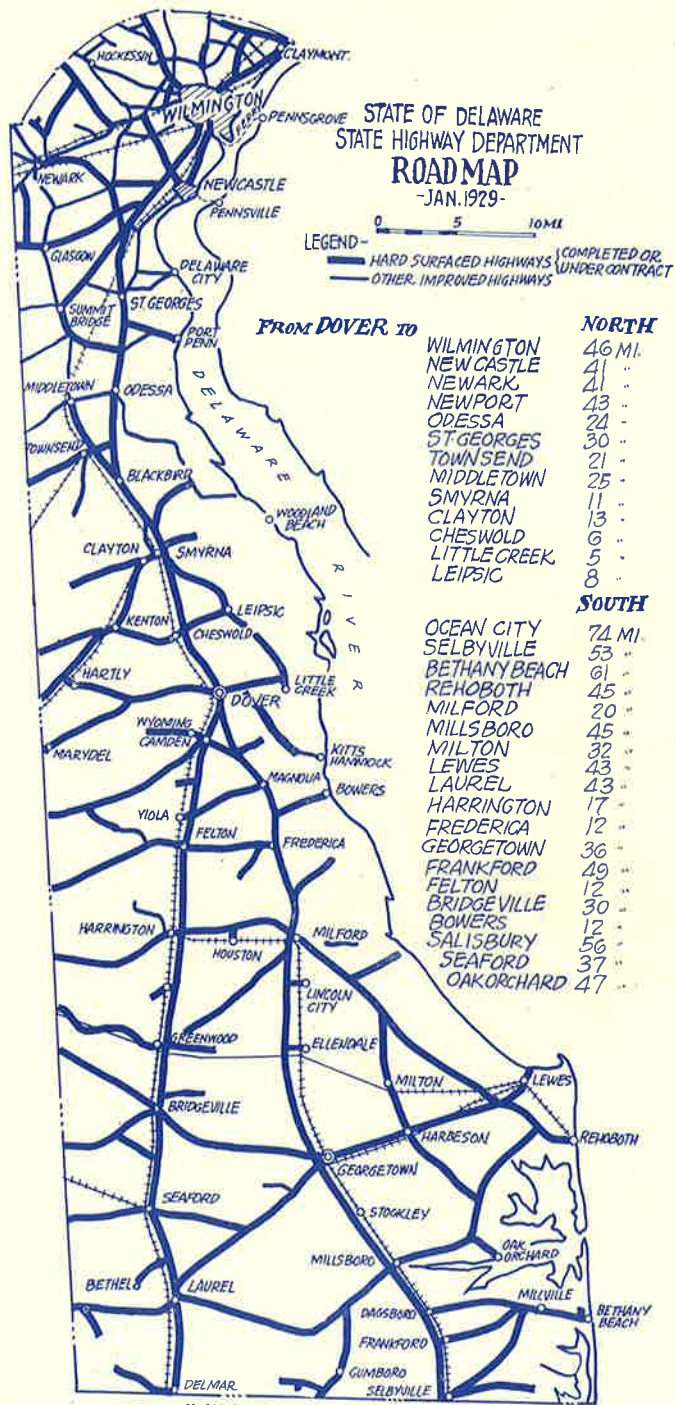


## POINTS OF INTEREST

- STATE HOUSE
- KENT GENERAL HOSPITAL
- COUNTY COURT HOUSE
- YE OLDE DOVER GREEN
- MAPLEDALE COUNTRY CLUB
- WESLEY COLLEGIATE INSTITUTE
- STATE ARMORY
- ELIZABETH W. MURPHEY SCHOOL
- SILVER LAKE
- RICHARDSON PARK
- OLD HILLIARD HOUSE
- LOGAN FARM (6 MILES)
- JOHN M. CLAYTON MONUMENT  
(Presbyterian Cemetery)
- CAESAR RODNEY HOME (6 MILES)
- COL. HASLET MONUMENT  
(Presbyterian Cemetery)



Issued by  
**CHAMBER OF COMMERCE**  
 DOVER, DELAWARE



"All Roads Lead to Dover"

Printed by  
 CANN BROTHERS & KINDIG, INC.  
 WILMINGTON, DELAWARE