

DELAWARE



The First State

GENERAL INFORMATION ABOUT

Dover, Delaware

POPULATION — Within City Limits 1954; estimated, 7,500; including surrounding developments, 15,000.

SHOPPING POPULATION — Within 25 mile radius 1954 estimated — 60,000.

CLIMATE — Average summer temperature about 76; coldest part of winter average about 34. Annual rainfall averages 43 inches. The normal growing season is approximately 187 days. We do not normally experience cyclones, floods, blizzards or earthquakes.

FORM OF CITY GOVERNMENT — Mayor, Council and City Manager.

STATE CAPITAL AND COUNTY SEAT.

LIGHTS AND POWER — Furnished by the Dover Power & Electric Company — Municipally owned.

WATER — Furnished by the Dover City Water Department by four artesian wells. Municipally owned.

TRANSPORTATION FACILITIES — Bus Service is provided by Trailways, Greyhound, Short Line, with modern equipment, operating in all directions.

AIR LINE — Allegheny Airlines.

TRUCKING SERVICE — Provided by the principal leading Eastern trucking companies.

RAILROAD — Pennsylvania Railroad serving this area.

EDUCATIONAL FACILITIES — Two Elementary Schools, two High Schools, two Colleges, one Parochial School. Two additional Elementary Schools with 12 rooms each under construction.

CHURCHES — 16, Representing all religious denominations.

HOSPITAL — The modern Kent General Hospital has a 100 bed capacity. There are 25 physicians and three surgeons on its staff. The recently opened new wing has three operating rooms, two delivery rooms and contains the newest and best equipment and protection available.

BANKS — Farmers Bank of the State of Delaware, Delaware Trust Company, Equitable Security Trust Company.

MANUFACTURING — International Latex, Richardson & Robbins, Coty.

RADIO STATION — WDOV, 1,000 kil., 1410 on your dial — "Delaware's Capital Voice."

NEWSPAPERS — Delaware State News (daily) circulation — 5,863, The Dover Index (weekly) circulation — 2,214.

HOTELS AND MOTELS — This area has modern accommodations with a total of 122 units within a three mile radius.

RECREATION — Two public playgrounds, two motion picture theatres, and one drive-in theatre, municipal swimming lake and club swimming pool, bowling alley, roller skating rink, tennis courts, nine-hole golf course (Maple Dale Country Club), three lighted athletic fields for night games.

FISHING AND HUNTING — Excellent fishing (salt and fresh water) and hunting.

For further information contact



Dover Welcomes New Industry

This folder was prepared with the cooperation of the Delaware State Development Department
Design and Production: Grafco, Inc., Wilmington 1, Delaware

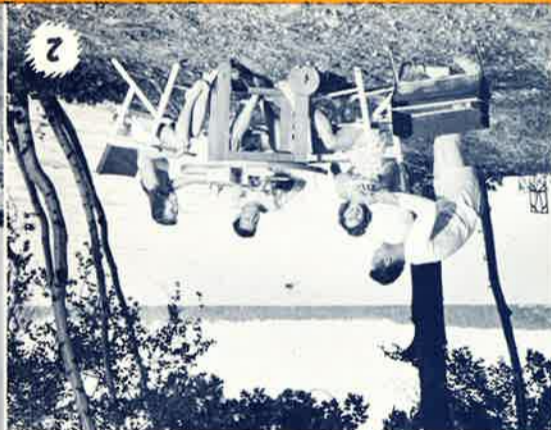
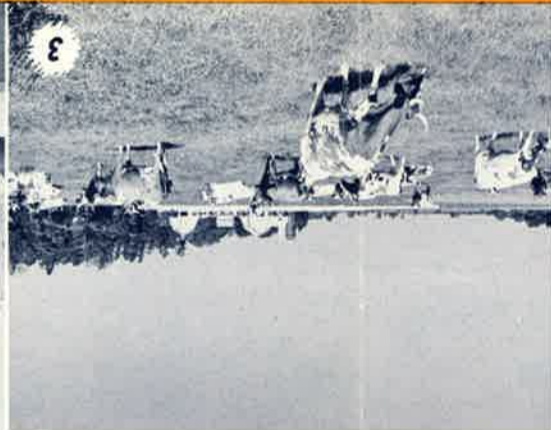
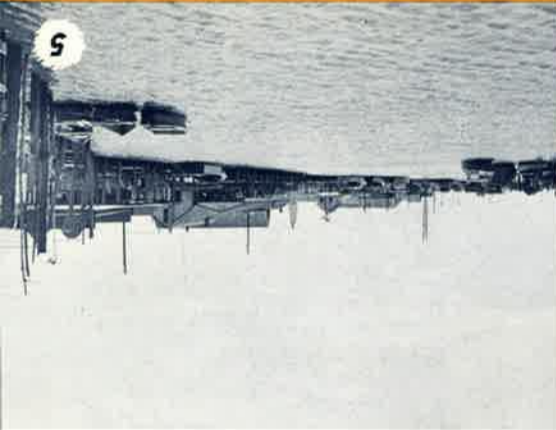
**Beautiful
Historic**

Delaware Bay

DOVER

DELAWARE

The Capital of the First State



4. DOVER AIR FORCE BASE — port of embarkation for all Atlantic Division MATS bases.
5. BOWERS BEACH — charter boats are available for Bay fishing during the season.
6. MURPHY SCHOOL — given to the community by the late Sanford S. Murphy. It serves children whose parents cannot give them proper advantages.

PEOPLE: For many of the same reasons people like to visit Dover — many choose to establish residence here. Add to this fine schools, good government, modern hospital, etc., and all the conveniences of a big city . . . and you describe Dover, a desirable community for pleasant living.

1. STATE MUSEUM — in an old Presbyterian church (1790). Displays devoted to State history, natural resources, agriculture, industry, and transportation.
2. PUBLIC PICNIC AREAS — a typical spot on the shore of Silver Lake.
3. PASTORAL SCENE — representative of the milk and broiler industries prominent in the area.

HISTORY: Dover is a show place of American history and architecture. Many historic buildings are maintained in fine preservation. Delaware State Museum offers permanent displays depicting early life in Delaware up to present day developments. The Hall of Records is the repository of the Public Archives of Delaware. Among notable documents are the Royal Grant of 1682, Records of Duke of York and William Penn periods. "Dover Day" is annually celebrated the first Saturday in May. Colonial homes, gardens, ancient documents and collections are then open to the public.

RECREATION: Summer recreation abounds near Dover. Fresh water fishing and bathing can be enjoyed inland. Nearby, Delaware Bay and Atlantic Ocean provide salt water activities at their best. Vacationers find Delaware salt waters superb for Ocean and Bay bathing, fishing, crabbing and boating.

INDUSTRY: Decentralization is bringing Dover to the attention of industrialists. Here, in an ideal temperature climate, centrally located on the coast, power and transportation facilities are keeping up with the rapid increase in commercial development. Should you feel Dover may have advantages to offer your industry, an inquiry to the Dover Chamber of Commerce will bring you desired information.

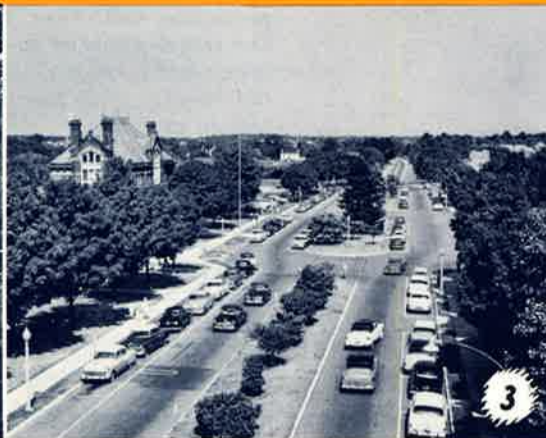
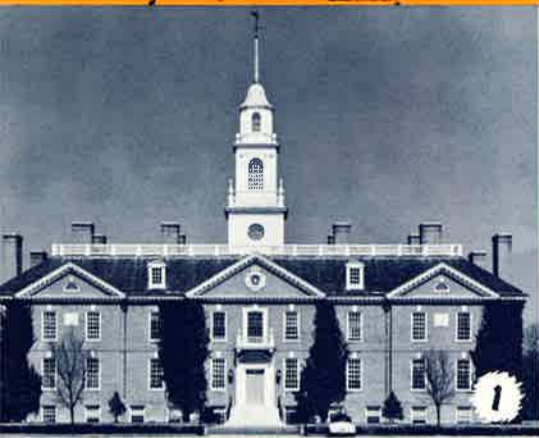
DOVER is a city befitting the role, "The Capital of the First State." Whether for business or recreation Dover's central location offers quick access to all Delaware and the East Coast. Dover offers metropolitan conveniences and industrial advantages in a beautiful rural setting.



DOVER • DELAWARE

Welcomes

**VISITORS
INDUSTRY
RESIDENTS**

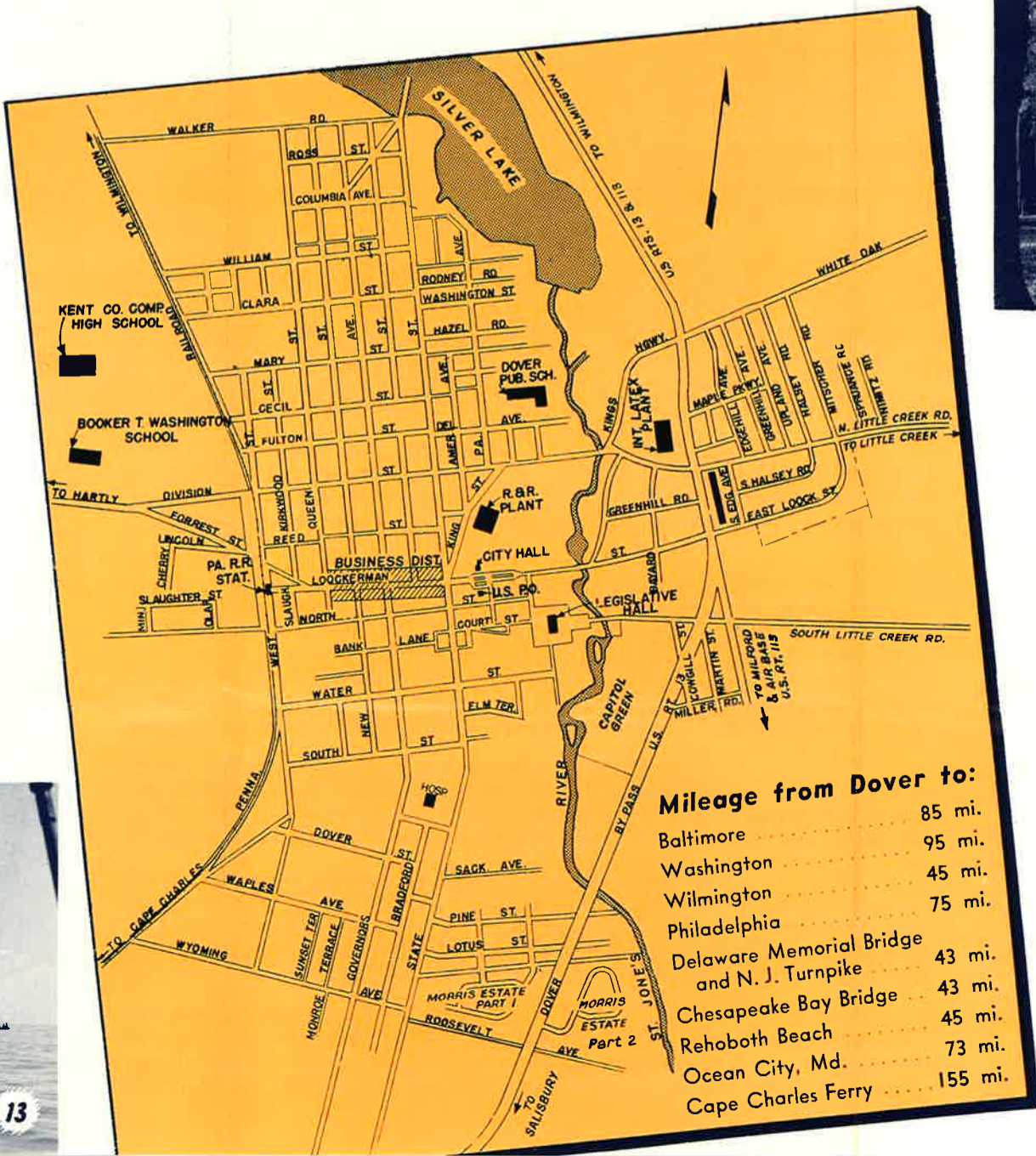


A brief pictorial presentation of beautiful, historic DOVER, DELAWARE . . .

1. LEGISLATIVE HALL — contains many interesting architectural features, and valuable eighteenth century portraits. Chambers of State Senate, House of Representatives, and offices of the Governor and Secretary of State.
2. KENT GENERAL HOSPITAL — 100 bed capacity, 25 physicians and 3 surgeons. The recently opened new wing has 3 operating rooms, 2 delivery rooms and the newest equipment available.
3. DOVER PLAZA — typical of the modern, landscaped streets, well arranged to handle today's traffic.
4. DOVER HIGH SCHOOL — one of Dover's many up-to-date educational centers.
5. OLD STATE HOUSE — second oldest in America, still in use. Here Delaware ratified the Federal Constitution, December 7, 1787, as the first state to enter the Union. Dover has been the State Capital since 1777.
6. INTERNATIONAL LATEX CORPORATION — Playtex Park, beautiful main plant of the company. World-famous Playtex products are produced here in modern, air-conditioned buildings.
7. DICKINSON HOUSE — mansion home of John Dickinson, "Penman of the Revolution." Near Dover, Delaware.
8. OYSTER DREDGING — illustrated is one of the many commercial oyster boats in a re-seeding operation over the beds in Delaware Bay.
9. SILVER LAKE — north of the city of Dover. Offering bathing, boating, fishing, and picnic areas.
10. WESLEY JUNIOR COLLEGE — main building. Founded in 1873 as the Wilmington Conference Academy. Accredited co-educational Junior College.
11. KITTS HUMMOCK — bathing, boating, crabbing, and fishing.
12. DOVER DAY — held annually, the first Saturday in May. Visitors are welcome to tour open houses, gardens, and see our ancient documents and loan collections.
13. WOODLAND BEACH — principal crabbing center; rowboats and bait available. Swimming and refreshments.
14. DU PONT HIGHWAY, ROUTE 13 — looking north from Dover. A modern dual-lane highway which is an integral part of the north and south seaboard route.



HOME OF JOHN DICKINSON
"PENMAN OF THE REVOLUTION" MEMBER OF DELAWARE COLONIAL AND STATE ASSEMBLY, MEMBER OF CONTINENTAL CONGRESS, ANnapolis CONVENTION, AND PHILADELPHIA FEDERAL CONSTITUTIONAL CONVENTION. FOUNDER FOR RELEASE OF ARTICLES OF CONFEDERATION AND FEDERAL CONSTITUTION GOVERNOR OF DELAWARE AND PRESIDENT SECOND DELAWARE CONSTITUTIONAL CONVENTION. BORN MARYLAND, 1722; DIED WILMINGTON, 1808.



Mileage from Dover to:

Baltimore	85 mi.
Washington	95 mi.
Wilmington	45 mi.
Philadelphia	75 mi.
Delaware Memorial Bridge and N. J. Turnpike	43 mi.
Chesapeake Bay Bridge	43 mi.
Rehoboth Beach	45 mi.
Ocean City, Md.	73 mi.
Cape Charles Ferry	155 mi.

