

THE CHURCHES OF DELAWARE

by

FRANK R. ZEBLEY

Author of "Along the Brandywine"



*A history, in brief, of the nearly 900 churches
and former churches in Delaware as
located by the Author.*

1947

was arranged to be held on Nov. 12, 1865, with the Revs. A. Manship, J. J. Pearce, Mr. Colclazer and A. D. Davis taking part.

On Jan. 20, 1881, John T. Jakes donated a church site at the cor. of Layton Ave. and College St. More land was purchased on July 8, 1881, from Sarah A. Williams. The ground was broken for the present church on Mon., July 4, 1881. The corner-stone was laid on July 31, 1881, by the Revs. A. W. Lightbourne, J. S. Willis, J. H. Caldwell and J. N. Pilchard, the pastor. The church was incorporated on May 8, 1883. It was dedicated in September, 1883. After having been entirely redecorated a reopening service was held on Oct. 7, 1888. The building was improved in 1902 and a reopening was held on Sept. 14, 1902. On Dec. 29, 1912, the church was rededicated after extensive improvements.

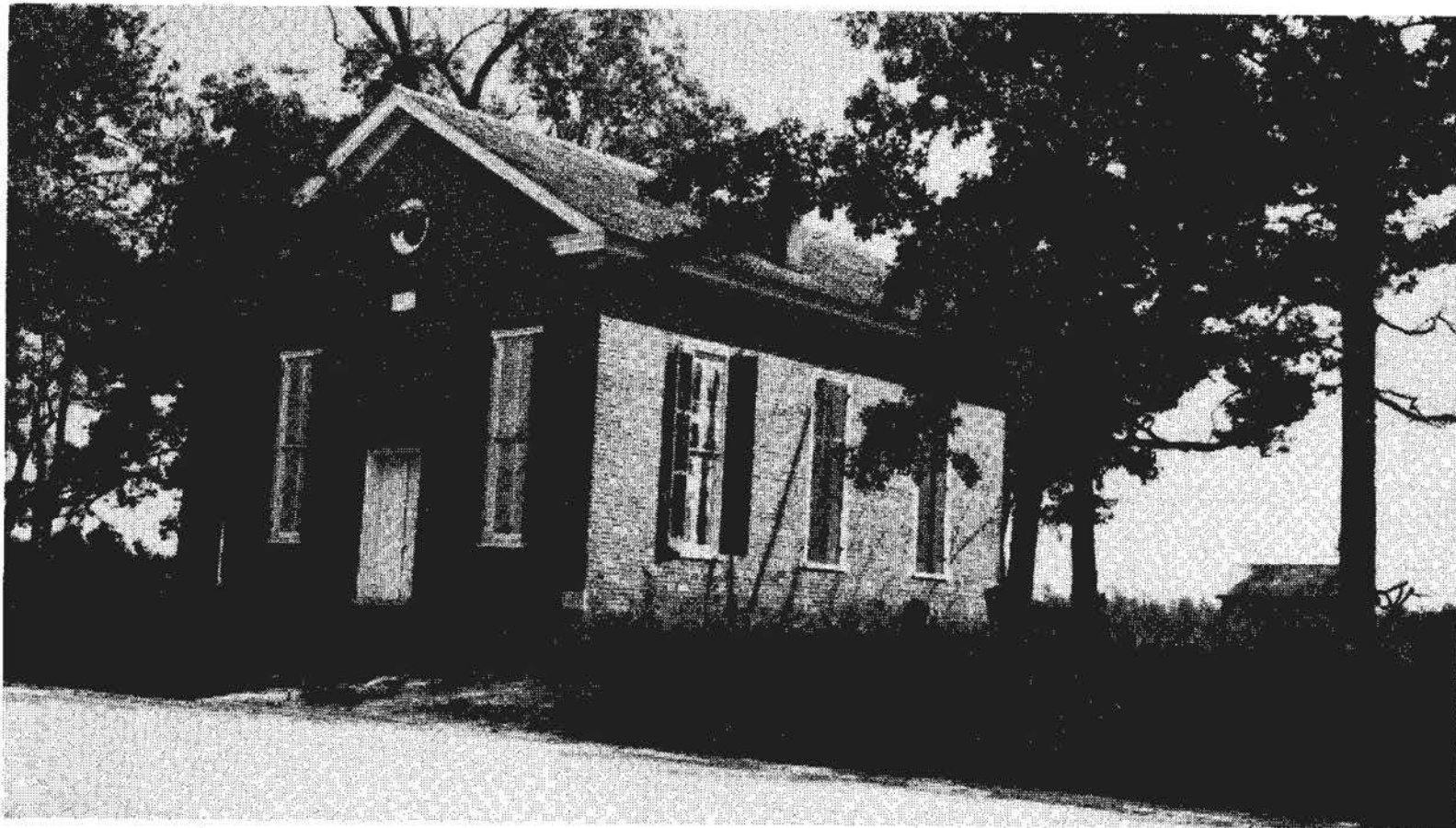
Zion A. M. E. Church was organized in Wyoming in 1845 and a church was built. Additional land was purchased on Sept. 12, 1848, from Geo. Jones and on Apr. 9, 1863, from John Jones. A second church was built in 1889. On Oct. 6, 1898, while a service was in progress, Sam Jones jumped up and declared, "I am the Lord and all who don't believe it are liars." Then the trouble started. Ike Fulman drew his pistol and shot into the ceiling first and then sent a bullet crashing into Chas. Waters' breast. A general melee followed after which Jones and Fulman fled to Hazletville and then on into Maryland.

On Aug. 15, 1923, one-quarter of an acre of land was purchased from Wm. Gaynes.

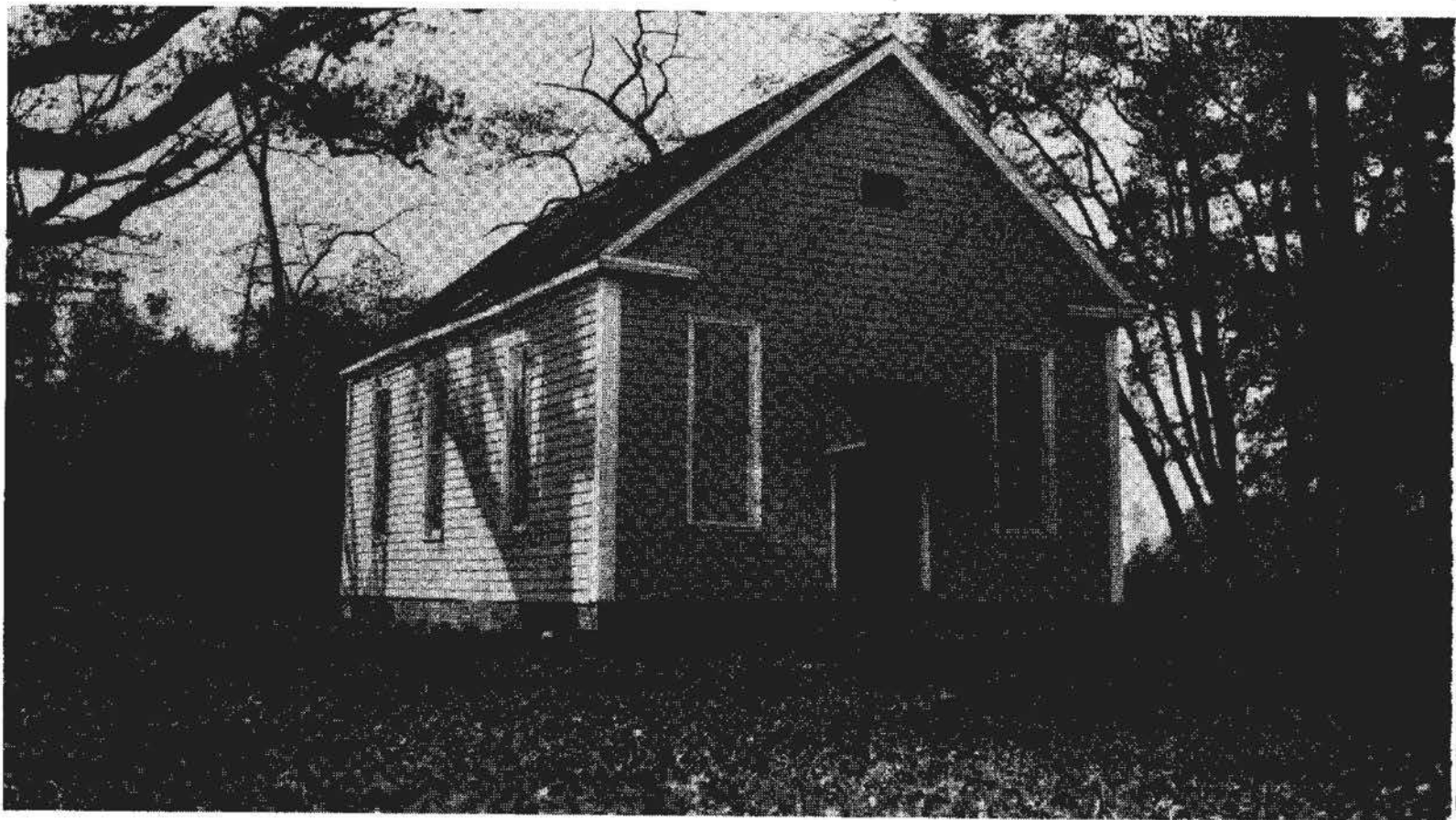
Union Methodist Church (M.E.) is located four miles west of Wyoming. The first camp-meeting in this section was held, in 1805, near the site of this church. The first church was probably built previous to, or at about this time. This building was used until 1859 when it was moved away to be used as a barn. A new frame church was completed and was dedicated on Dec. 25, 1859, by the Revs. Dr. Cooke and John B. Mann. In the graveyard the first interment was John Seward who died on Feb. 23, 1847. Extensive improvements were made in 1894. Pennell Emerson donated additional land on May 20, 1931. In 1933, the minister appointed by the Conference was refused by the congregation and the church was closed. It was opened as a Sunday School in 1935 which is still continued with occasional preaching.

Thomas' Methodist Chapel (M.E.) is located four miles west of Hazletville. One-half acre of land was donated by Hannelope Freeman-Mrs. Owen Irons to the Rev. Wm. Thomas to be used as a site for a church by "the people called Methodists to preach and expound God's Holy Word." A log chapel was built and a graveyard was laid out. On Dec. 24, 1779, Mr. Thomas transferred the property to a board of trustees. It was known locally for many years as the "Log Chapel" and as "Forest Chapel" although its official name was "Thomas' M. E. Chapel" in honor of the Rev. William Thomas. On May 13, 1781, Harry, a negro, preached upon the subject, "The barren fig tree" and from the mention made by Bishop Asbury "that the circumstance was entirely new and that the white people looked on with attention," it is believed to have been the first instance of a negro preaching to white people on the Peninsula. Harry was Bishop Asbury's servant and accompanied him on his travels.

The log chapel was moved away, in 1798, and a frame chapel was erected. This chapel was dedicated by Freeborn Garrettson. The present brick chapel was built in 1825. It was dedicated by the Rev. Solomon Higgins. In 1877, the chapel was rebuilt in modern style. The walls were raised three feet, the



THOMAS' METHODIST CHAPEL
(Page 226)



ST. JONES' METHODIST CHURCH
(Page 229)

gallery was removed and a recess pulpit was built. It was dedicated on Nov. 25, 1877, by Pres. Elder Charles Hill and the Rev. J. H. Caldwell.

Services are held every other Sunday afternoon. In the rear gable, the date 1825, in large figures, is laid out with black header bricks. The graveyard beside the chapel is well maintained. The oldest tombstone that the writer could find is that of the Rev. John Connelley who died on Dec. 21, 1845.

Parker's Methodist Church, colored, is located two miles s. w. of Westville. This church was founded in 1877. 25 perches of land were donated on Jan. 9, 1878, by Joshua Parker, as a church site. There is a graveyard.

Star Hill M. E. Church, colored, is located at Star Hill, east of Camden. The first building was erected in 1866. The present church was built in 1905. Additional land had been purchased from F. W. J. Heinemann on Feb. 16, 1903.

Star Hill Unity Holiness Church, colored, is located at Star Hill. This building was originally the home of the Lutheran Church at Rising Sun. In 1931, the building was moved to its present location. The church site had been donated by Albert M. Palmer on Oct. 13, 1930.

Rising Sun M. E. Church was organized in 1888, and meetings were held in a local hall. The interest was not sustained and the effort failed in about three years.

St. Paul's Evangelical Lutheran Church at Rising Sun. This congregation was formed in 1900, and met over the blacksmith shop at the five corners. On Jan. 13, 1903, a building committee was elected. The church was incorporated on Feb. 16, 1903. A plot of land was purchased from Robert Richardson, on Mar. 3, 1903, and the building was started. The corner-stone was laid on Mar. 29, 1903. The opening service was held on May 24, 1903. The church was given the name "St. Paul's" and was dedicated on Aug. 2, 1903, by the Revs. E. L. S. Tressel and W. Zimmerman. Sometime between Mar. 12, 1911 and 1916 this congregation was dissolved. Mission services were held from 1916 until 1924 when the church was closed, the congregation transferring to the Dover church. The building was sold, in 1931, to a congregation of colored Holiness who moved it to Star Hill.

Lebanon Methodist Church (M.E.) at Lebanon, was built in 1858. The church site had been purchased from John Sapp on Oct. 19, 1857. The church was incorporated on Apr. 2, 1874. On Mar. 12, 1922, the church was destroyed by a fire that originated next door in the home of Captain Walker. A new church was built and it was dedicated in 1925. The church was closed in 1939. Since that time occasional services have been held by students of the Wesley Junior College.

Lebanon P. E. Mission was founded by the Rev. Benjamin F. Thompson, B.D., of Dover, in January, 1931. The early meetings were held in a private home. The Methodist church was closed at that time and Father Thompson was given the use of it for his services. In February, 1933, a class was ready for confirmation and this was done by Bishop Philip Cook in St. Paul's Church at Camden. At this time the Methodists decided to reopen their church. This depleted the mission to some extent. One of the members volunteered to transport the members, by bus, to attend the services at St. Paul's Church in Camden, after which the mission at Lebanon was closed.