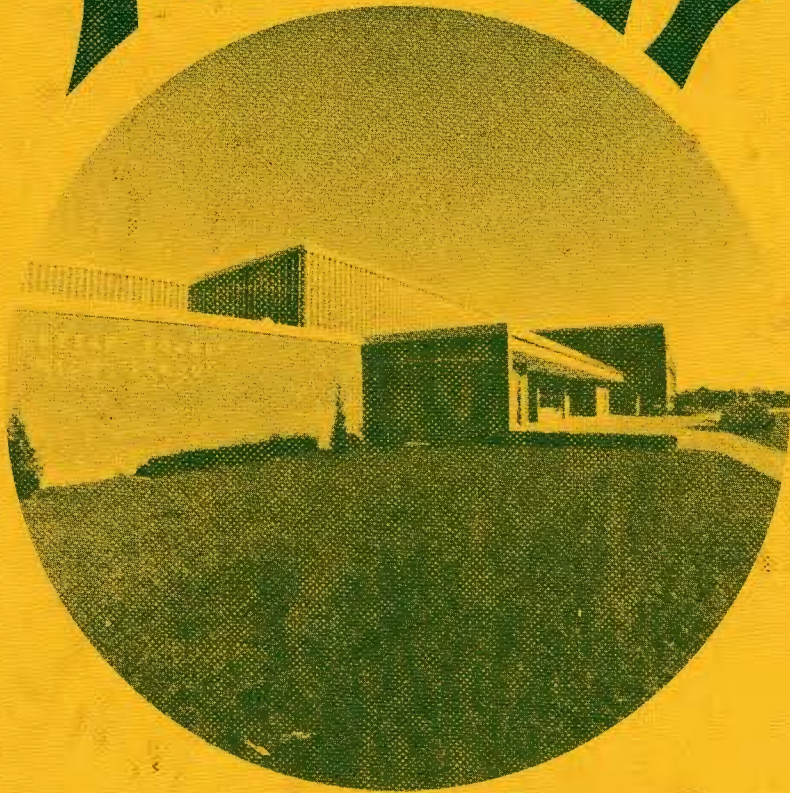


CAESAR RODNEY



CRISP OF 1970

Gary Walker



STUDENT LIFE 2

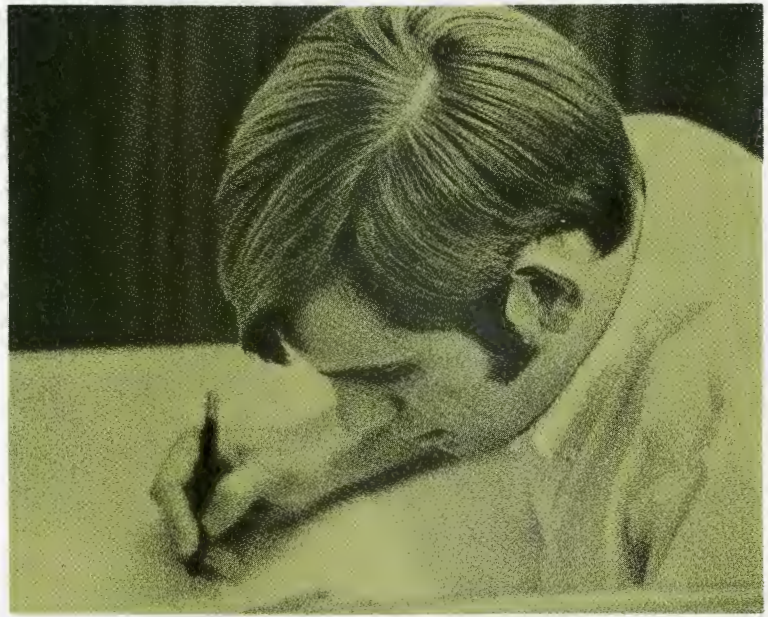
PEOPLE 16

ORGANIZATIONS 84

SPORTS 118

ADS 139

CRISP 169



Mirrored through our looking
glass we discover . . .



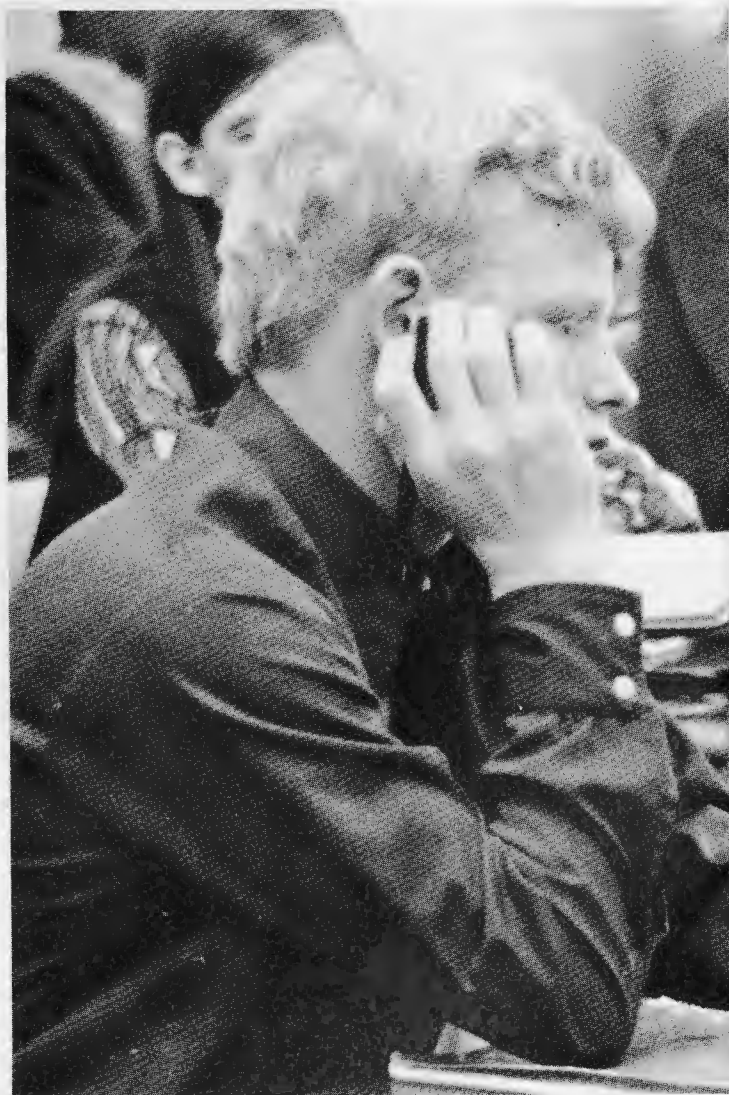


Caesar Rodney Senior High
Camden, Delaware

AS WE LOOK BACK

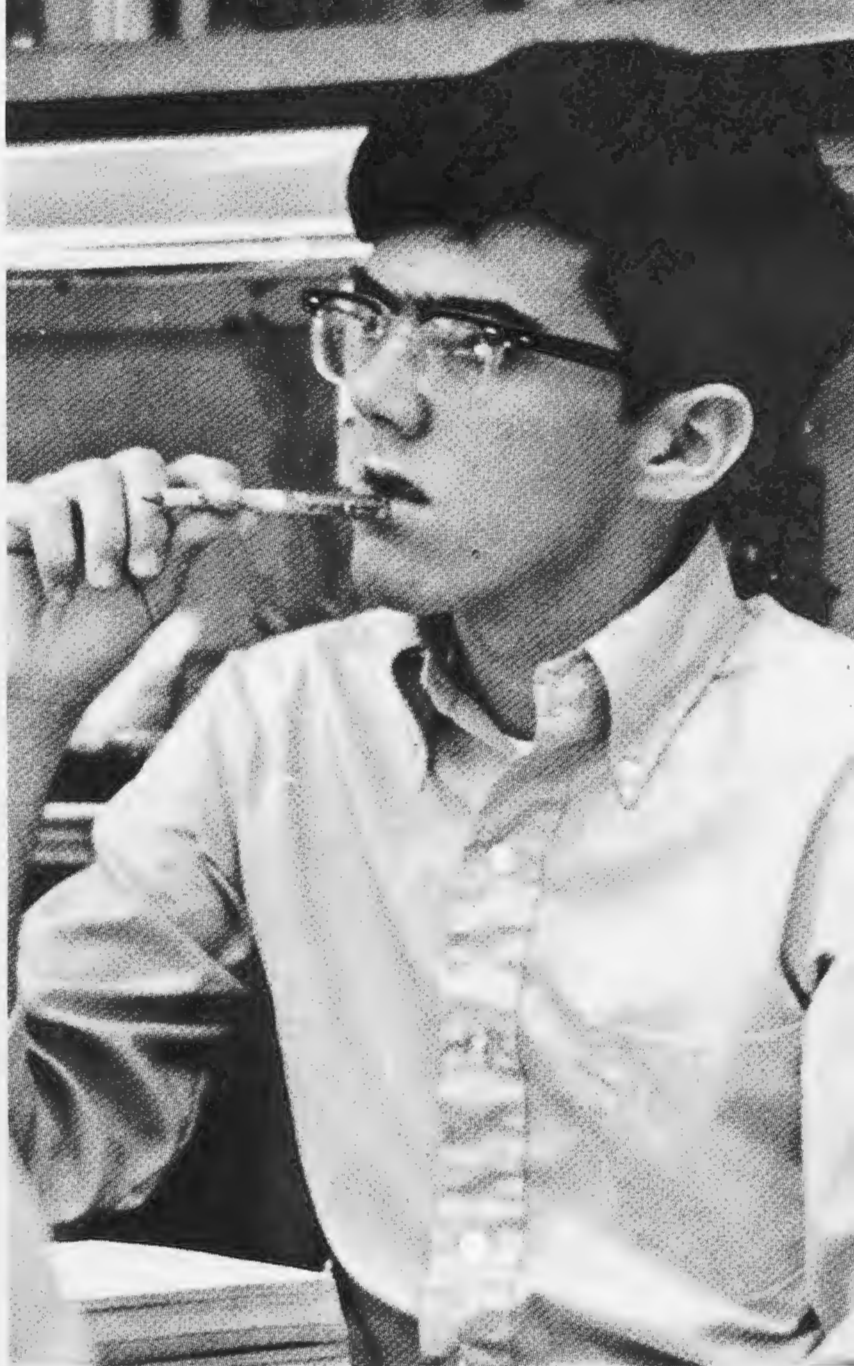


AND DREAM ABOUT





THE YEARS BEHIND



WE BEGIN TO REMEMBER





FACES



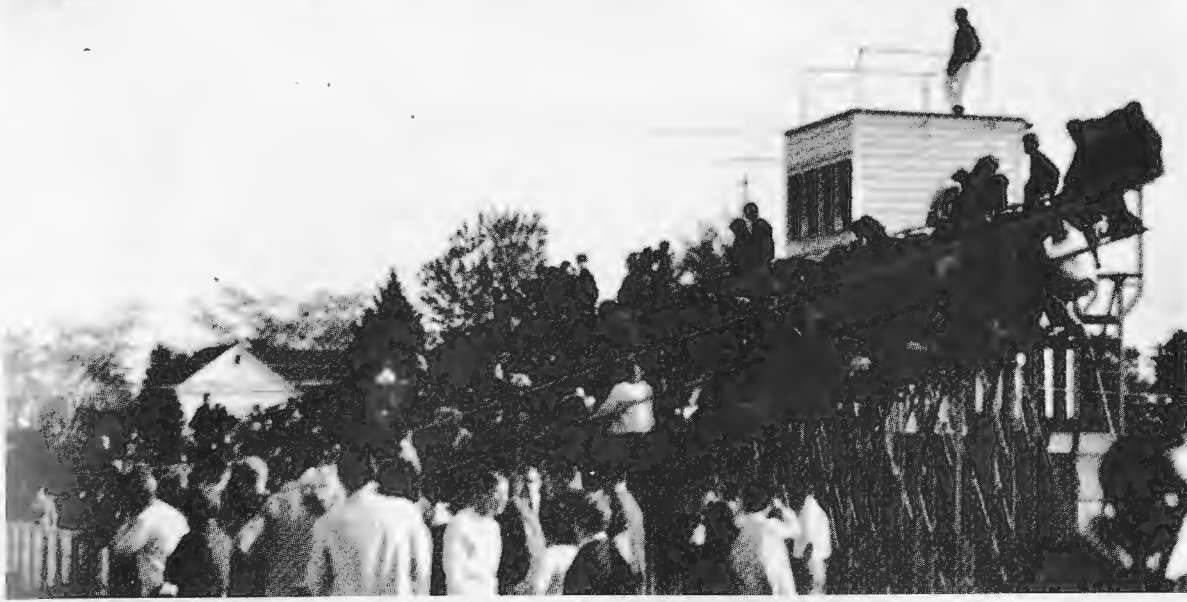
The best to a student.
five B. Kneeland





PLACES



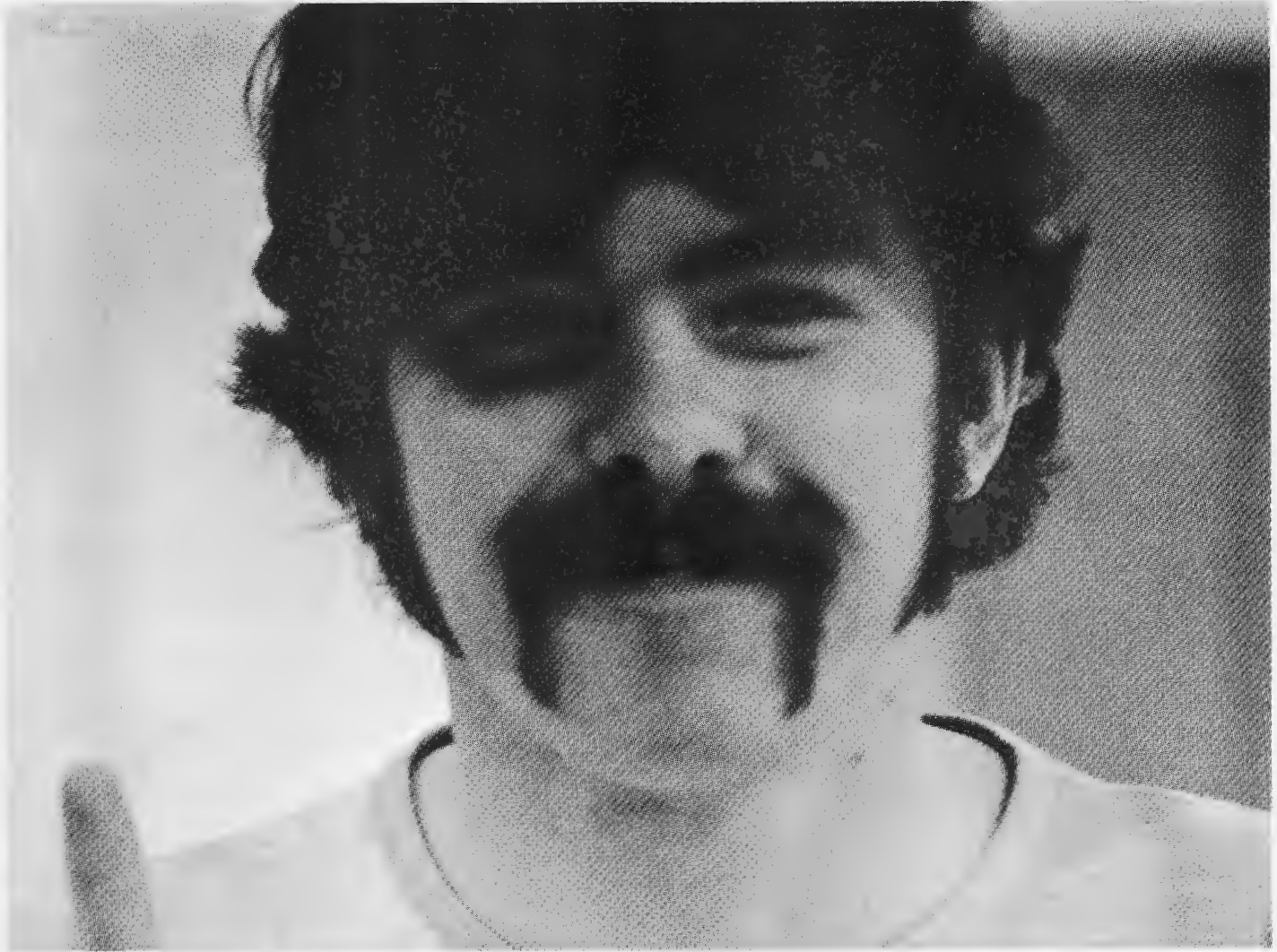




TIMES







Davis Griffin





Page 84

LAUGH

BELIEVE

GROOVE

DOUBT

LOVE



Page 16



Page 118

SOUL

SNEER

CLAN

CATTY

GREAT

CLASS OF "70"



Bob Metheny	President
Harry Rigby	Vice President
Ann Mancuso	Secretary
Linda Pastlewaite	Treasurer



Brenda Joy Alexander
"Kidney"

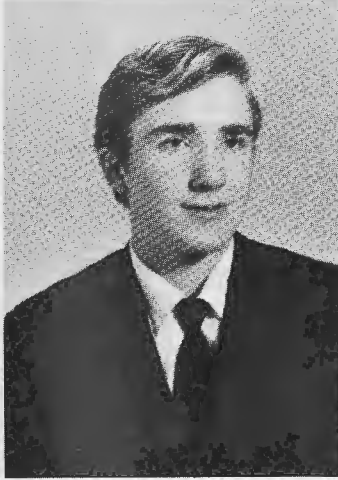
"The door to success is labeled push."
"I dig you, babe."



Karla Aliff
"Up against a wall?"



Paula Aliff

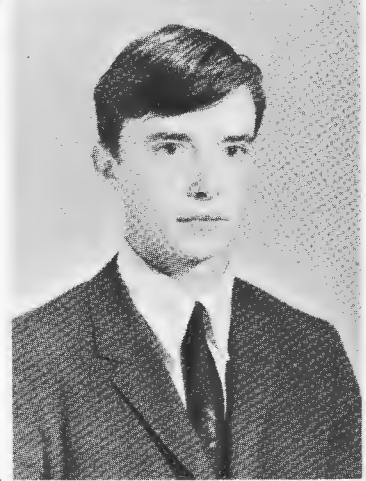


Dennis B. Allen
"Allen"
"It ain't right."
Band 1, 2, 3, 4. Orchestra 3, 4.



Beth Ann Appenzeller
"Beth"

J.V. Hockey 2; J.V. Basketball 1, 2; V. Basketball 3, 4; V. Softball 3, 4; Student Council 2, 3; Activities Chairman 4; Dance Committee Ch. 3; A.F.S. 2, 3, 4; A.F.S. Pres. 4; Senior Class Executive Council Chairman; Senior Float Committee.



John Arthur
"Potts"



Susan Carol Ayrault
"Susan"
"So?" "Oh, crud!"
Orchestra 1, 2, 3, 4; G.A.A. 4; Honor Society 3; Softball 2, 3; V. Hockey 3, 4; J.V. Hockey 2; J.V. Basketball 2; F.B.L.A. 4; S.O.P. Office Worker 2.



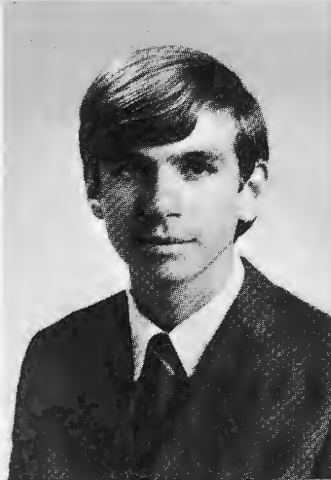
Janet L. Bamberger
"Jan"



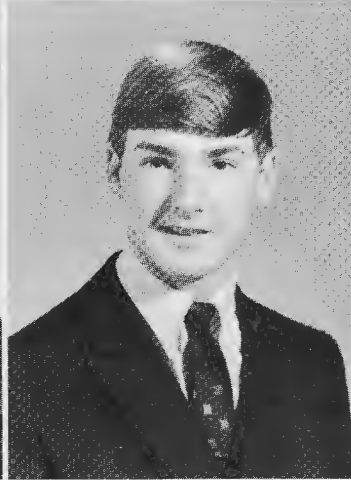
Marilyn Sue Banks
 "Sue"
 "Oh Shoot."



Thomas William Barlow
 "Tom"
 "I trust everything will turn out
 alright."



Robert Bartley
 "Bob"



Hal Bennett
 "HB", "Homer"
 "Do it!"
 J.V. Football 1; J.V. Basketball 1;
 Spanish Club 1; Latin Club 1.

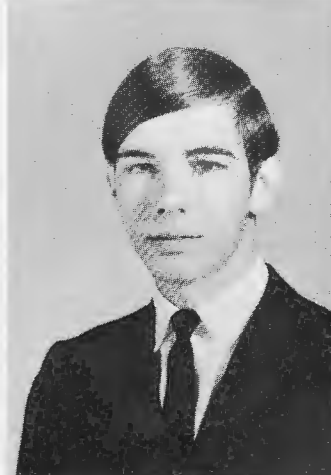


Robert James Bennett Jr.
 "Junior"
 "Hang it up."
 VICA 2, 3, 4.

Christine Ann Berni
 "Chris"
 "Aiyee!" "God!" "Oh come on
 you know you did it!" "Hey Pam,"
 "Candy," "Mary," and "Sue"
 ... "I'm glad to see you made it."
 Transferred 3; Cheerleading 1;
 C.Y.O. 2; Prom Committee 3.

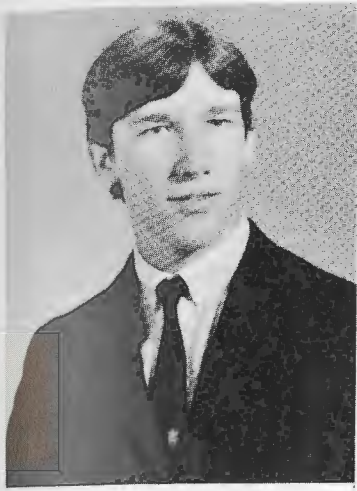


Brenda Mae Bordley
 "Bren", "Bren-Bren"
 "Now ask me how funny that
 was!"
 Jr. Band 1; Sr. Band 1, 2,
 3, 4; Glee Club 1, 2, 3, 4; Sec-
 retary 4; Debate Club 1; Span-
 ish Club 2, 3, 4; Secretary 4;
 Student Council 3; Senior Play
 Selection 4; Senior Soul Section;
 Prom Committee 3; F.T.A. 1, 2.



Ralph Blades
 "Ralphy"
 "I was just wondering, if you'd
 like to ah..."





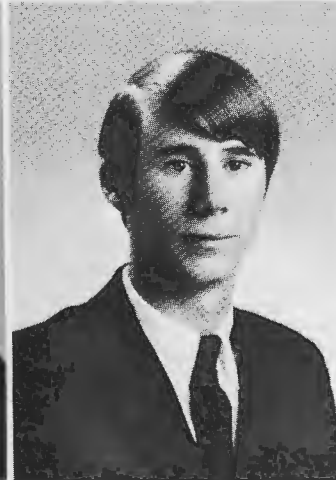
Kevin W. Boyd
 "Roach"
 "Go ye forth and multiply . . ."
 Wrestling 3.



Carol Lynn Bradley
 "Heck!"
 Science Club 2, 3, 4; Pep Club 3.



Jean Brougher
 "Jean"
 "Oh, right!"
 "Your out of your tree!"
 Glee Club 4; VICA 2, 3, 4.



Dennis Brown
 Spanish Club 4.



Leatha A. Brown
 "Lee"
 "Stay in school, you may have a
 better life."

Pamela Brown
 "Pam"
 "Are you serious?"
 "You've got to be kidding!"
 Crisp 1; Pep Club 1; Latin Club 1,
 2; Student Council 3; Student
 Council Executive Club 3; Jr.
 Class Council 3; Drama Club 3,
 4, Math Club 2, 3, 4; Cheer-
 leading 2, 3, 4, Treas. 4; Honor
 Society 2, 3, 4. Corresponding
 Secretary 4; A.F.S. 4.



Elizabeth Rose Clapp
 "Betsy"
 "Oh heck!"
 Glee Club 2, 3, 4; French Club 3,
 4; Drama Club 3; Math Club 3,
 4; Science Club 2; Student Council
 Executive Comm. 4; Home-
 room Rep. 3; Glee Club Pres. 4;
 Math Club Sec. 4; Rider Staff 2;
 Colorguard 3, 4, Captain 4.



Norman Carney





Christina Clinton
 "Chrissie" "Chris"
 "Say What?"
 Cheerleading 1; Pep Club 1.



Rosemary Clouse
 "Rose"
 Drama Club; A.F.S. 1

Vernon Collins
 "Don't ask me, I ain't in it."



Susan Edith Comegys
 "Sue"
 "Definitely"
 Band 1, 2, 3; Library Club 1;
 Business Club 1; F.B.L.A. 1.



Janet Anne Cooper
 "Hey, wait a minute!"
 Pep Club 1; F.T.A. 1; F.N.A.
 3, 4; French Club 4; A.F.S. 4;
 Glee Club 3, 4; Drama Club 1;
 Rider 2.

John Cooper



Karen Cooper
 J.V. Basketball 1; D.E.C.A. 3, 4.



John E. Conrad, III
 "Conrad"



Hartzell Emanuel Coppage
 "Hartz"
 "I doubt it!"
 "Yea!"
 Orchestra 1, 2, 3, 4; Librarian 1,
 2, 3, 4; All State Orchestra 3, 4;
 Entre Nous 3, 4; Glee Club 3, 4;
 Ensemble 4; Homeroom Presi-
 dent 1.



Gary Keith Corder
 "Clyde"
 Pep Club 1, 2, 3, 4; Treas. 3;
 Spanish Club 4; Glee Club 2, 3, 4;
 Football 1, 2, 3, 4; Drama Club 4;
 Junior Class Play 3; A.F.S. 4;
 Tennis Team 2, 3, 4; F.T.A. 4.



Therese Cousseau
 "Terri"
 "Speak slowly, please"
 A.F.S. Student 4; A.F.S. 4;
 Drama Club 4; French Club 4.



Elreta LaMaye Craig
 "Reet"
 "What's happening?"



Holly Cravens
 "Hol"
 "Really."
 Class Treasurer 1; Basketball 2;
 Crisp 3; Spanish Club 3, 4; V.
 Pres. Drama Club 3, 4, treasurer
 4; Color Guard 3, 4; F.T.A. 3.
 Homeroom Rep. 1, 2, 3, 4.



Gary D. Curl
 "Gary"
 "You're really neat!"
 Crisp 1, 2, 3, 4; Wrestling 1, 2, 3,
 4; Tennis 2, 3, 4; Pep Club 1.



Rosemary Curley
 "Rosemary"
 Entre Nous 2, 3, 4; Drama Club
 3, 4; A.F.S. 4; Math Club 4;
 Science Club 1, 2; National
 Honor Society 3, 4; Treasurer 4.



Gail Dannemann
 "I don't understand."
 French Club 1, 2, 3, 4; President
 4; Glee Club 3, 4; Drama Club
 1, 2, 3; Treasurer 3; Science Club
 1, 2, 3, 4; Math Club 2, 3, 4;
 Rider 1, 2, 3, 4; Tennis 1, 2, 3, 4;
 A.F.S. 2, 3, 4; Safety Squad 1, 2.



Tommy Dantonio
 "K.C."
 "Oh man! What's your game."
 Lettermen's Club 1, 2; Track 1;
 Basketball 1, 2, 3, 4.



Beverly Darling



Charlotte Ann David
 "Ann"
 "Have you seen my blue flash?"
 Band 1, 2, 3, 4; F.N.A. 3, 4, V.
 Pres. 1; JV Hockey 1, 2; Varsity
 3, 4, Co-Captain.



Maria deBlois
 F.T.A. 1, 2, 3; French Club 3, 4;
 Honor Society 3, 4; Science Club
 3, 4; Glee Club 1, 2, 3, 4; Math
 Club 3, 4.



Lorraine Carole Dennis
 "You'd be surprised!"
 Orchestra 1, 2, 3; F.N.A. 2, 3;
 Science Club 3, 4; Secretary 4;
 French Club 2, 3, 4, Treas. 4;
 Glee Club 1, 2, 3, 4; Jr. Class
 Play 3; Drama Club 4.



**Gene Allen
 Dill**



John Dill
 "Dilly"
 "Get out of my sight."
 VICA 1, 2, 3; State Photographer
 1; State V. Pres. 1; State Parlia-
 mentarian 1; Class President 1, 2.



Phyllis Dill
 "Phyl"
 "You ain't done it yet."
 DECA 1, 2.



Paulette M. Dixon
 "Dixie"
 "Ain't nothing like the real thing!"
 Glee Club 1, 2, 3, 4.



James Michael Donnelly
 "Mike"
 "Why?"



Charles Thomas Donovan
 "Charlie"
 "I give up . . ."
 Crisp 1, 2, 3, 4; Assistant Business Manager 3; Band 1, 2, 3, 4; Assistant Business Manager 4; Kent County Band 1, 3, 4; Pep Club 1, 2; Commentators Club 1, 2; Track 1; Golf 3, 4; Jr. Play 3; F.T.A. 3, 4; Entre Nous 2, 3; Coed Hi-Y 3, 4; Handbook Comm. Chairman 4; Student Activities 1, 2, 3, 4;



Sandra Lee Downes
 "Sandy"
 "I don't believe you, or do I?"
 Pep Club 1.



Pamela J. Dudley
 "Pam"
 "Oh, Peanuts!"
 Drama Club 3; F.N.A. 4; Crisp 4.



Herbert Dulin
 "Hoag"
 J.V. Basketball 1; Wrestling 2;
 D.E.C.A. Parliamentarian.



Julie Dunn



Murphy A. Elliott
 "Murph the Surf"
 "What's happening?"
 V.I.C.A. 2, 3.



Ranita English
 "Smile, the world may depend on it some day."
 Glee Club 3, 4; Vice President 4;
 Drama Club 3, 4; President 4;
 Spanish Club 4; F.T.A. 4; Junior
 Class Play 3.



Stephen P. Ereik
 "Steve"



Raymond S. Failing III
 "Jiggs" Failing Jr.
 JV Football 1, 2; Captain 1,
 Varsity 1; Cross Country 1, 2, 4;
 Student Council 1; Basketball 1;
 Letterman's Club 1, 2, 3, 4; V.
 Pres. 3; Rider 2.



Diane Cheryl Faircloth
 "Oh, Blast it!!"
 "Chuck is coming home!!!"
 Latin Club 1, 2, 3, 4; Mu Alpha
 Theta 3, 4; Honor Society 2;
 Omega Alpha Sci. 3 V.P.; Pres. 4.



Maria Theresa Falasco
 "Teri"
 "You dirty shebotandunken-
 toogaboo."
 Glee Club 1; Journalism 2, 3;
 DECA 1, 2, 3.



Bonnie Sue Farley
 "I resemble that remark!"
 VICA 2, 3, 4.



Patti Ann Farschman
 "Patti"
 Drama Club 1; Rider 1, 2; Office
 Worker's Club 1, 2, 3, 4; A.F.S.
 1, 2, 3, 4.



Sheryl Field



Warren Joseph Field
"Fease"

"Make your move, Duke!"
"It's all pink on the inside!"
Class Pres. 1, 2, Student Council 1, 2, 4; Band 1, 2; Glee Club 1; F.T.A. 1; Pep Club 1; Football 2, 4; Basketball 1, 2, 3, 4; Golf 1, 2, 3, 4; Letterman's Club 2, 3, 4; Math Club 2, 3, 4.



Harold Fitrer
"Fitch"

"Hey man! Surfs up!"
DECA 1, 2; Overlin Surf Team 1, 2; Flying 1, 2, 3, 4, 5; Sports Cars 1, 2, 3.



Margaret Elizabeth Floyd
"Bunny"

"You're kidding!"
Distributive Education 1, 2; Library Club 1; Drama Club 1; F.N.A. 1.



Stephen L. Ford
"Steve"

Stage Crew 1.



Diane Foster

Nancy Freeman
"Nance"

"Say that again?"
"I don't get it!"

Glee Club 2, 3, 4; Honor Society 3, 4; F.N.A. 2, 3; Rider Staff 3, 4; Color Guard 4; A.F.S. 3, 4; Mu Alpha Theta 3, 4; Orchestra & Ensemble 1, 2, 3; Glee Club Ensemble 4.



Joyce Marion Fritz
"Joy"

A.F.S. 2, 4; Pep Club 1, 2, 3; F.N.A. 3, 4; F.T.A. 1, 2, 3, 4; Tennis Team 2, 3, 4; Spanish Club 2, 3, 4; Commentator's Club 1.



Brian Gale
"Canuck"

"Yes, but in Canada it's better!"





Richard Gamberg

Jackie Lynn George
"George"

"There's no use in me asking. They always find some excuse to keep me home."

Student Council 1, 2; Pep Club 1; Prom Committee 3; Homecoming Float Committee 1, 2, 3.



Marvin Graves
"Marr"
"That boy must be crazy."



Larry Grier
"Ain't that something?"



James Grose
"What ha doin' tonight. Babe?"

Michael L. Gunderman
"Dr. Spock"
Kent Vo-Tech Photographer;
Transferred 4.



Edward Thomas Hammond Jr.
"Ed"
"Sweetlips"
"Budwagon Forever"
Newspaper 1; French Club 4;
Baseball 1, 2, 4.



Becky Ellen Harmic
"Beck"
J.V. Hockey 2; F.N.A. 1, 2, Treas. 3; Drama Club 1; J.V. Basketball 2. Pres. 4; Pep Club 1, 2, 3; V. Hockey Manager 3, 4; Latin Club 1, 2; A.F.S. 4.



Melissa Anne Harris
 "Liza"
 "You wish!"

F.N.A. 1, 2, 3, 4, Treas. 4; F.T.A. 1, 2, 3, 4; Junior Class Play; Pep Club 1, 2; Latin Club 1, 2, 3; Commentators Club 1, 2; Debate Club 1.



Richard Eric Haufe
 "Eric"
 "You sly dog!"

Pamela Jane Hayes
 "Pam"

"Aiye!" "Tod's coming home this weekend!"
 Drama Club 1, 2; Pep Club 1, 2; C.Y.O. 1, 2; Transferred from Holy Cross 3; Drama 3, 4; Prom Committee 3.



Misako Heesh



Gary Heller

"What the heck." "Let it all hang out."
 Basketball 2.

Marianne Ellen Hickey
 "Hick," "Marianne"
 "Who... me?"

Transfer 2; A.F.S. 3; F.N.A. 3; F.T.A. 1; Pep Club 2; Spanish Club 2; J.V. Basketball 1; V. Basketball 2; Drama 1.



Robert Hungerford
 "Bob"

"You ain't wound too tight"
 Football 4; J.V. Football 2; J.V. Basketball 1, 2; V. Basketball 3, 4; J.V. Baseball 1; V. Baseball 2, 3, 4; Rider Staff 2.



Anita Jackson



Mary Ann Jazan



Joe Jenkins
"Joey"

"Man, I'm a sweet innocent little kid." "Colt 45 is great."
Cross Country 2; Wrestling 4;
Lettermen's Club 2.



John Richard Jenner
"Jack"



Rhonda Johnson
"Ronnie"

"Heck if I know"
DECA 3, 4; Rider 2; Safety Squad
3.



William H. Jopp
"Bill"



Archie R. Jordan Jr.
"Randy"



Jon Kendall Judd
"B.P. Boy." "Jud"
"Yea, I have some gum!"
Band 2, 3, 4; Tennis 2, 3, 4
Lettermen's Club 4; DECA4.



Edward Joesph Kaczka
"Ed"

"Hey you ole Buzzard." "How
you doin'?" "Que pasa, amigo?"
F.F.A. 1, 2; Spanish Club 2, 3, 4;
Lettermen's Club 3, 4; JV Foot-
ball 1, 2; JV Baseball 1, 2; V
Football 3, 4; Class Council Rep.
4.





Christina Kapp
"Chris"

"If I had brains. I'd be dangerous.
What? You snorkel!"
Pep Club 2; CRISP 2; Library
Club 2; Guidance Office 3; VICA
3, 4, Pres. 4.



Joan Gail Kelly
"Geel"

Pep Club 1, 2, 3, 4; P. Sec. 2;
GAA 1; Hockey 3; F.N.A. 3.



Michael David Kilgore
"Mikie-Pie"

"That gets it."
Senior Soul Section; Senior Play
Selection Committee.



Gary King

"That's the way!"
V. Football 3, 4; J.V. Football 1;
Spanish Club 2; Commentators
Club; Safety Squad 1, 2; CRISP
2; Pep Club 1, 2.



Kathleen Mary Kirwan
"Kathy"

"Alligators can be your friends,
but if you don't like them they
can be your shoes."
Transfer H.C. 3; Drama Club 4;
Ski Club 4.



Barry L. Kline
"Barr"

"Hey! Mike, are you going to
Gino's for lunch?"



Linda Kling
"Lin Joy"

"Don't do today what you can
put off till tomorrow."
GAA 3, Pres. 4; JV Hockey 1, 2,
co-captain 2; V. Hockey 3, 4; JV
Basketball 2; Softball 2, 3; V
Basketball 3, 4; Pep Club 2, 3;
FNA 2, 3; Co-Ed Hi-Y 1; Band 1,
2, 3, 4; Jr. Band 1, 2.



Donald Knight
"Gary"

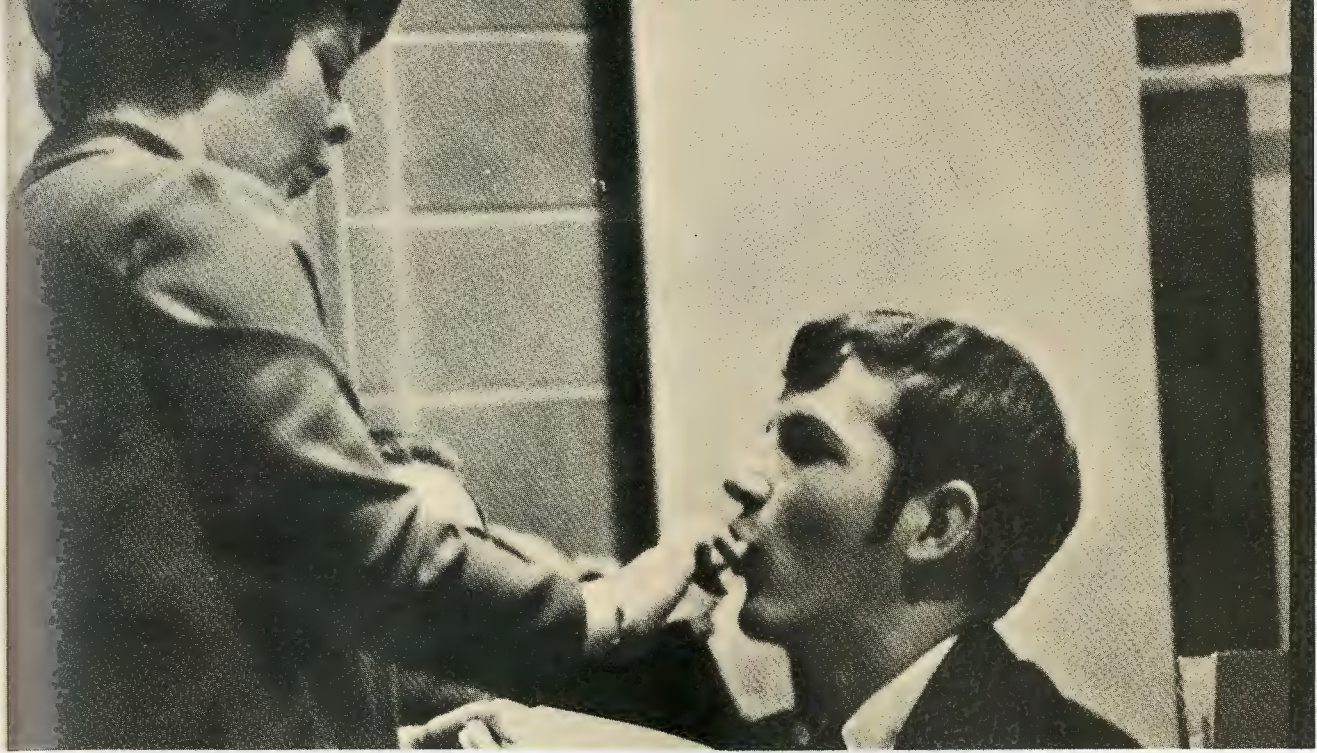
"What ails you?"
Lettermen's Club 2; Football 2.



Miss Patricia Bradway
B.A. Susquehanna University
Drama Club
English

THE HAPPIEST MILLIONAIRE







Gary Knight

John Fred Knight

"Fred"
"I'm the toughest guy on the team."
JV Baseball 1; JV Football 2;
Varsity Football 3, 4; Lettermen's
Club 3, 4.



Peter Kolonia
"Pete"



Susanne Mary Krasulak
"Sue"
"Thrills!"



Reinhold Otto Kruger
"Rhyno"
"You are what you eat!"

Jeanette Yvonne LaFrance
"Gosh, I don't know."
JV Basketball 2; Pep Club 2;
Prom Committee 3; Pep Club
Float 2.



Taylor Leon
"You are what you eat."
Band 1, 2, 3, 4; French Club 1, 2.



Sherry Lewis
"Louie"
"Be quiet a minute, please."
F.B.L.A. 4.



Laura Lee Leyshon
"Laurie"

"You're not going to believe this but..."
Library 1; Ski Club 2, 3, 4; Cheer-leading 2; Student Council 1; A.F.S. 4; Drama Club 1, 2, 4; Secretary 3; Art Club 3; Vice Pres. 3; Science Club 2, 3, 4; Secretary 4; Commentators Club 1; Pep Club 1, 2, 4; Crisp 1, 2, 3, 4; Jr. Class Play; Prom Committee co-chairman; Debate Club 1; F.N.A. 4; Latin Club 1, 2; Spanish Club 4;

Mildred Lindale
"Millie"

"Whatever turns you on!"
Vica 2, 3; F.T.A. 1; Office Worker 1.



Larry Little

"Big Little," "Lawrence"
"Oh, Forget it! I don't believe it!"
J.V. Baseball 1, 2; Varsity Baseball 3, 4; Lettermen's Club 4.



Frank Joeseeph Lobaccaro
"Frank"

"Oh, good grief; she did it again!"
Wrestling 3.



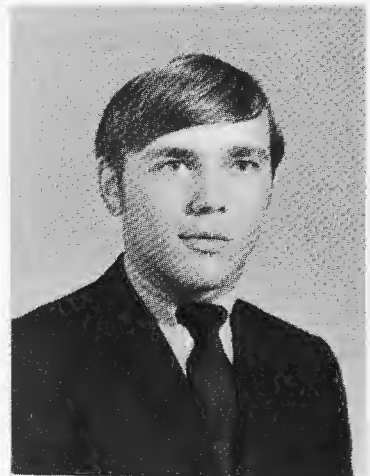
Janet Ann Lucks
"Janet"

"Oh, for Pete's sake"
Traffic Safety 2, 3, 4, Captain 3, 4; Office Workers 2, 3; F.B.L.A. 4; Guidance Helper 1, 2, 3, 4.

Bruce Madden
"Bruce"

"Now how funny was that?"
"God darn"

Football 1, 2, 3, 4, captain 4; Wrestling 1, 2, 3, 4; F.F.A. 1, 2, 3, 4; Lettermen's Club 1, 2, 3, 4, vice-president.



Cynthia Anne McCoy

"Cindy, Cam, Stanley"
"YOU know, you're right"
Student Council 2, 3; Tri Hi-Y 1, 2, 3, 4, Vice-President 3; Prom Committee; Junior Class Council; Trans. 3.



Debra Ann McCoy
"Debby"

Senior Class Play Selection Committee 4; French Club 3, 4; Vice Pres. 4; Prom Decoration Committee 3; Jr. Class Play Make-up and Costume Committee 3; Glée Club 4; Student Council Rep.





Michael Robert McHugh
"Mike"
"Herbie, want to go to Gino's?"

Vicki Marie McWilliams
"Vic"
"Are you kidding!?"
"You wish!!!"
Transferred from Dover 3; Student Council 3, 4; Committee Chairman 4; Junior Prom Committee Chairman 3; Crisp 4; Honor Society 4; Junior Class Council 3; Senior Class Council 4; Rider 3, 4; Senior Float 4; Pep Club 3.



Margaret Ann Maloy
"Maggie"
Pep Club 1, 2, 3; Pres. 1, 2; Mu Alpha Theta 1, 2, Pres. 1; Glee Club 1, 2, 3, Treas. 1; French Club 2; Honor Society 3, 4; FTA 1; Jr. Class Play 3; Drama Club 1; GAA; JV Hockey 1, 2; Varsity Hockey 3, 4; Varsity Tennis 1, 2, 3, 4; JV Basketball 1.



Ann Marie Mancuso
"Sport"
"Where's Harry??"
"Oh, Harry! Come on ya . . . yell!"
Transferred from California 1; Honor Society 2, 3, 4; Sec. 4; Class Sec. 2, 3, 4; Student Council 1, 2, 3, 4; Prom Committee Chairman 3; Spanish Club 1, 2, 3, 4; Cheerleading 2, 3, 4; Captain 4, Co. Capt. 4; Drama Club 2, 3; Pep Club 1, 2, 3, 4; GAA 1; Jr. Class Council 3; Sr. Class Council 4; Mu Alpha Theta 3, 4; F.T.A. 2.

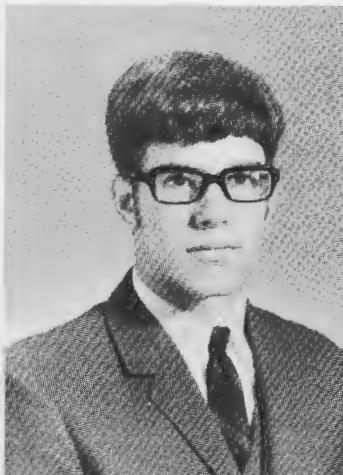


Edna Marker
"Holy Holly"
Vica 1, 2, 3.

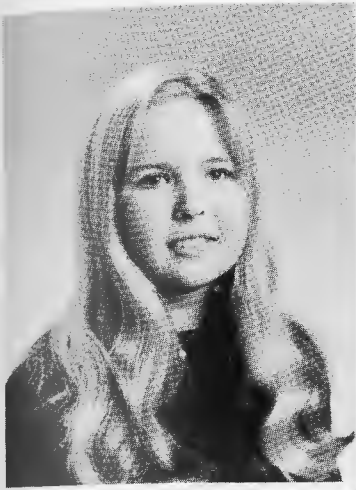
Clarence Marr III
"Buddy"
"Frodo Still Lives!"
Transferred from Dover 3; Science Club 1; DECA 1, 2; State Winner, Advertising 1; Tennis Team 3, 4; Spanish Club 1; Library Club 1.



Frank Ottis Marshall
"Franky"
"You better straighten up!"
Drama Club 3, 4; Homeroom Officer 1; Commentators Club 1, 2; Treas. 1; Crisp 1, 2; Prom Committee 3; Jr. Play Comm. 3; A.F.S. 4; F.T.A. 4; Spanish Club 3, 4; Jr. Class Float Comm.



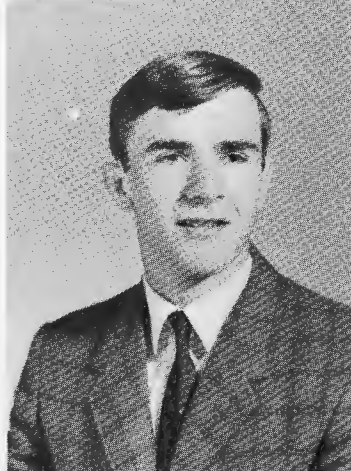
Bruce Alan Marsteller
"Happy Harry"
"Think we've got time?"
"Had any lately?"
Mu Alpha Theta 3, 4; Junior Play; Senior Soul Section 4.



Christine Agnes Mathews
 "Chris", "Christopher"
 "Have you no couth?"
 Pep Club 1, 2, 3; Glee Club 3, 4;
 Drama Club 3, 4; Mu Alpha Theta
 3, 4; Honor Society 3; Rider 2,
 3; Editor 3; French Club 2, 3, 4;
 Debate Club 1; Commentators
 Club 1, 2.



Gary R. Melvin
 "Reds"
 "Don't get any on ya!"
 Lettermen's Club 3, 4; D.E. 3, 4;
 Football Mgr. 3, 4; Basketball
 Mgr. 3, 4; J.V. Baseball



Robert Morton Metheny
 "Otis"
 Glee Club 3, 4; Track 3; Football
 3, 4; Basketball 2, 3; Math Club
 3, 4; Honor Society 3, 4; Jr. Class
 Pres.; Sr. Class Pres.; Jr. Class
 Play; Exec. Club; Student Council
 1, 2, 3; Boy's State Delegate.



Brenda Elizabeth Miller
 "Brink"
 "Oh! Wouldn't I!"
 "You wanna make a bet!"
 Pep Club 1, 2, 3, 4; Treas. 4;
 Drama Club 4; Spanish Club 4;
 Prom Committee 3; A.F.S. 4;
 Understudy and prompter for Jr.
 Class Play.



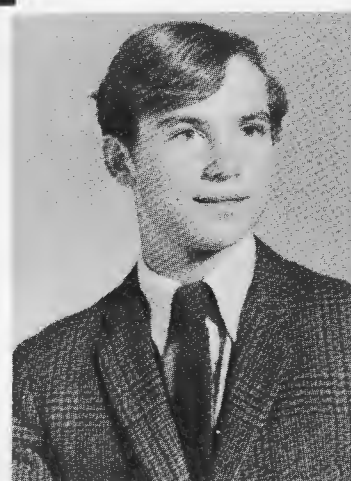
Sara Louise Miller
 "Sallie", "Sal"
 "You can lead a horse to water,
 but when you get him to swim on
 his back you've really accom-
 plished something!"



Judy Minnick
 "Jude"
 "Mike called last night"
 "You're not supposed to take it
 that way"
 A.F.S. 3, 4; Pep 1, 2; F.N.A. 2,
 3; Rider 3; S.S.S. 4; F.T.A. 1;
 French Club 3; Jr. Float Comm.



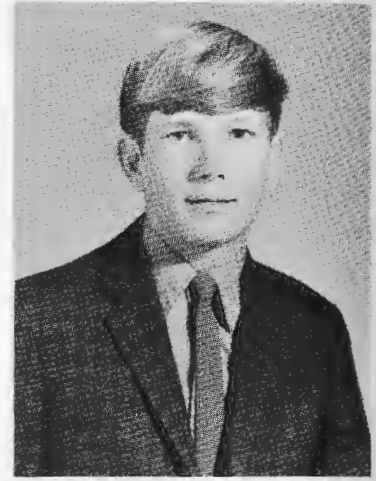
Wayne Minor
 "Wayne"
 Wrestling 1, 2, 3, 4.



David Mitten

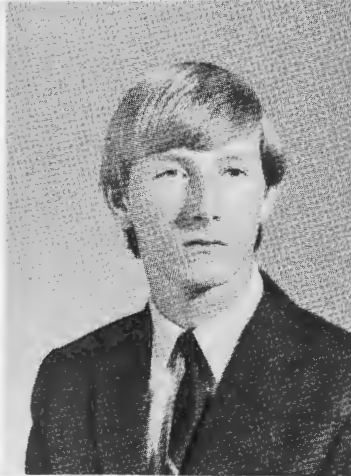


Debra Sue Moore
 "Debbie"
 "Oh well . . . That's life." "Hang
 it up!" "Oh Wright!!!"
 D.E.C.A. 1; A.F.S. 1; Office
 Workers 1, 2.



Coleman Morris
 "Bijo"
 "He who hesitates is lost!"

James Alvin Morris
 "Jim"
 D.E.C.A. 1.



JoAnn Morris
 "Jo Ann"
 "What? Are you serious?"
 Pep Club 1, 2, 3, 4; Drama Club
 3, 4; French Club 3, 4; Basket-
 ball 2; Hockey 1; A.F.S. 4.



Lou Ann Natale
 "Lu"

Richard E. Nickerson
 "Nick"
 Lettermen's Club.



William Marshall Northcott
 "Marsh"
 "Here comes Register, the lead
 gossip!"
 Mu Alpha Theta 4; Entre Nous 4.



Thomas O'Donnell
 "Tod"
 JV Basketball 1, 2; JV Football 1,
 2; Tennis 3, 4; Mu Alpha Theta
 4; Crisp 4; Latin Club 4.

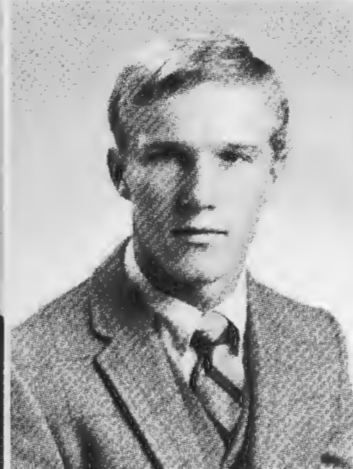


Deborah Oeller
"Debbie"

Linda Jane Olliver
"Grace", "Graceful"
"That's pitiful!!"
F.N.A. 2; Pep Club 2; Latin Club
2; Student Council 2; Executive
Committee Council 3, 4; D.E.C.A.
3, 4; President 3, 4; Girl's State
Delegate; Prom Committee 3;
Junior Trip Planning Committee
3; Junior Play Planning Com-
mittee 3.



Brenda Sue Palmer
"That's really neat!"
Glee Club 1; Orchestra 1, 2;
Hockey 2, 3; Prom Committee 3;
Cheerleading 4; Secretary 4;
D.E.C.A. 4; Vice President 4.



Steven Philip Pankoff
"Pany"
Varsity Football 4; Lettermen's
Club 4; D.E.C.A. 4.



Audrey Parker

Gregg W. Parker
"Porkie"
"Oh, cheesel"
"Baaahh!"
JV Baseball 1, 2; Varsity Base-
ball 3, 4; Wrestling 1, 2, 3, 4;
Lettermen's Club 1, 2, 3, 4; Span-
ish Club 4; Homeroom President
1; Latin Club 2; Mu Alpha Theta
3.



Thomas Pecher
"Gomer"
"Surprise, surprise!!"
V.I.C.A. 1, 2, 3.



Rita Pendry
D.E.C.A. 1, 2.



Lawrence M. Perry
 "Skip"
 "Oh, great frogs, the world knows that."
 VICA 3, 4.



Susan Jane Perry
 "Sue"
 "I didn't know"
 "Oh! Mish-Mosh!"
 Cheerleading 1, 2, 3, 4; Glee Club 1, 2, 3, 4; Student Council 1, 3; Latin Club 1, 2; Pep Club 1, 2; Jr. Sr. Float Commit. FTA 1; Treas. Pep Club 2.



Cathryn Pindzola
 "Cathy"
 "Rats!"
 Orchestra 1, 2, 3, 4; Entre Nous 2, 3, 4; Drama Club 4; Orchestra letter winner.



Linda Mae Postlewait
 "Lin Mae P."
 "There's a hole in the road."
 Band 1, 2, 3, 4; Bus. Mgr. 4; Kent County Band 1, 3; All-State Band 3, 4; Glee Club 1, 2, 3, 4; F.T.A. 3; JV Hockey 1, 2; Hockey 3, 4; Club 1, 2; Spanish Club 4; Orchestra 1, 2, 3, 4; GAA 4; Pep Club 1, 2; Junior Play; Girl's State 3; Class Treas. 2, 3, 4; F.N.A. 3.



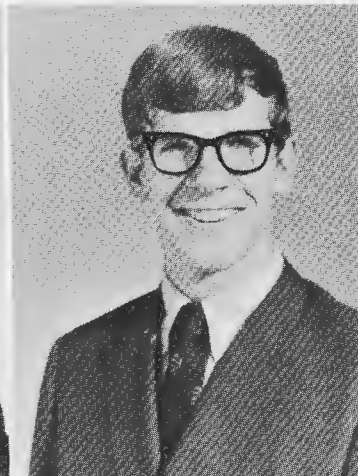
Richard Leonard Prahl
 "Rich"
 "The heck with it."
 F.F.A. 2, 3; Band 1, 2; JV Wrestling 2, 3; D.E.C.A. 3, 4.



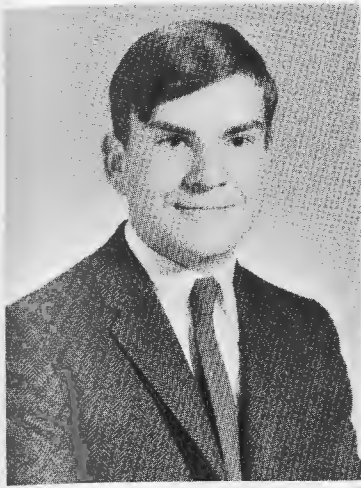
Janet Gail Pruett
 "Jan"
 "... I do not!!!"
 Glee Club 2, 3, 4; Accompanist 2, 3, 4; Rider 3, 4; Crisp 2, 3, 4; Pep Club 2, 3, 4; Drama Club 3, 4; Junior Play Publicity Committee; Art Club 2, 3; French Club 3, 4; F.T.A. 2; Commentators Club 2, 3; A.F.S. 4; Junior Prom Committee; Jr. Sr. Float Commit. 3, 4; Senior Play Selection Commit.



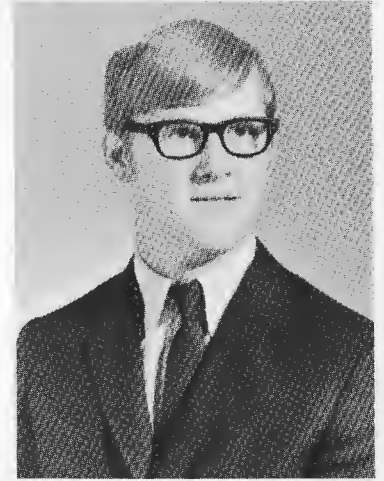
Ronald James Pryor
 "Linoleum"
 "Wooh Baby, I'll do it for five dollars."
 Senior Soul Section Band 1, 2.



Donald Veit Rahmes
 "Big Don"
 "I, in your name."
 Latin Club 3, 4; Math Club 3, 4; National Honor Society 3, 4; Glee Club 3, 4; Kent County Student Council 4; Boy's State Alt. 3; Football 3, 4; Basketball 3, 4; Student Council Pres. 4; Jr. Play 3; Executive Club 4.



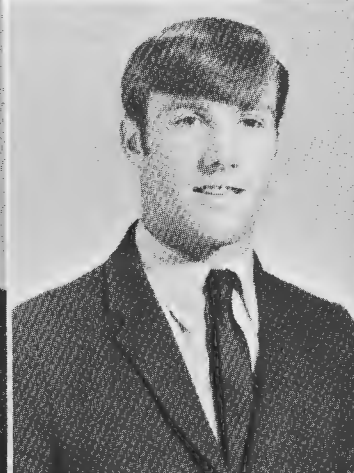
Gary Jackson Register
Junior Play



Tom Remus
"Red Ball"
"If you don't have a ground hog
going to be"
F.F.A.; Baseball.



Harry Rigby
"Oh Ann, You're Dum"
Lettermen's Club 2, 3, President
4; Football 1, 2, 3, 4; Wrestling 1,
2, 3, 4; Baseball 1, 2, 3, 4; Senior
Class V. Pres.; F.F.A. Charter.



Roy Rigby
"Hey Babe"
Wrestling 1, 2, 3, 4, Captain 3, 4;
Track 1, 2, 3, 4, Captain 3, 4;
Baseball; Football 1, 2, 3, Captain
3; Lettermen's Club 2, 3, 4.



Patrice Marie Riggi
"Patt"
"Indeed, it is"
Drama 1; Glee Club 1, 2; Latin
1, 2, 3; VICA 3, 4; Vo-Tech class
V. Pres. 3, 4; Student Council I.



Rhonda Rolon
"Ronny"
"Guess what happened last
night"
Spanish Club 1; Entre Nous 3, 4.



Martin Rutter



Cynthia Jean Sawyer
"Cindy"
Student Council 1, 2, 3; Drama
Club.



Stephen Schellinger



Lora Fae Schumann
"Lorie"
"Tata Troopies"



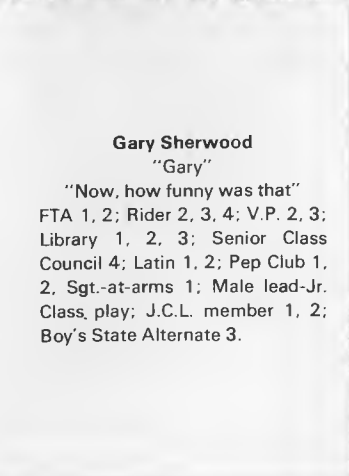
Theresa M. Scott
"Tessie"
"Don't Mean Nothing"
F.N.A. 1, 2, 3, 4; Secretary 1.



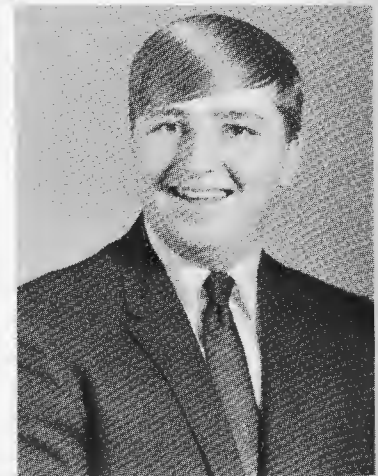
Linda Scranton
"Dognabit"
Basketball JV 1, 2; Softball 4.



Richard Sharp
"Rick"
"Hey Idiot"
Baseball 1, 2, 3, 4; Basketball
1, 2, 3, 4; Lettermen's Club 1, 2.



Gary Sherwood
"Gary"
"Now, how funny was that"
FTA 1, 2; Rider 2, 3, 4; V.P. 2, 3;
Library 1, 2, 3; Senior Class
Council 4; Latin 1, 2; Pep Club 1,
2; Sgt.-at-arms 1; Male lead-Jr.
Class play; J.C.L. member 1, 2;
Boy's State Alternate 3.



David Shinn
"Bill"
Lettermen's Club 1, 2; Rider 1;
Spanish Club 1, 2; Pep Club 1;
Math Club 1; Football 1; Basket-
ball 1; Cross Country 1, 2; Base-
ball 1, 2, 3.

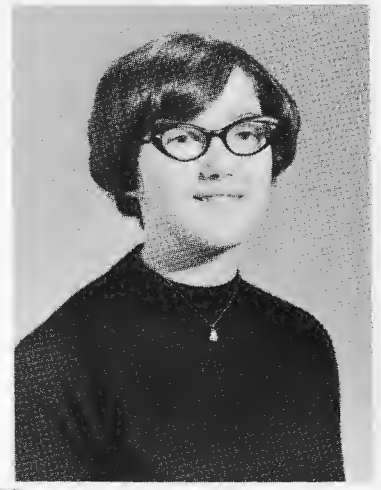


Karen Skotarczak
"Kar", "Mike"
"Are you kidding me?"
"Really?"





Edmond Alfred Smallwood
 "Ed"
 Lettermen's Club



Susan Kay Smith
 "Sue"
 "Darn, I don't know"



John Robert Soltis
 "Soak"
 "1, 2, 3 — Bzzzz; Klutz"
 Football 1, 2, 3, 4; Tennis Team
 3, 4; Senior Play Selection Com-
 mittee; Lettermen's Club 3, 4.



Bayard Wharton Spencer
 "Byo"
 Spanish Club 3, 4; Rider 3, 4;
 Football 1, 2, 3, 4; Lettermen's
 Club 3, 4; Secretary 1; Treasurer
 1; Junior classical League 3, 4.



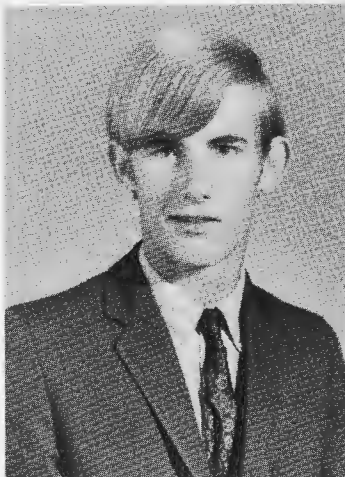
Sandra Ann Stanley
 "Sandy"
 "oh, yeah!"
 Pep Club 2; Latin Club 3; Science
 Club 1.



Todd Delano Starke
 Lurch"
 "You can do it if you try"
 Football 3, 4; Cross Country 1, 2,
 3, 4; Lettermen's Club 2, 3, 4.



Gene Stevens
 "It's your world, squirrel."



Celeste Margret Stone
 "Celeste"
 "Oh you Dude"
 "you cool thing"
 Transferred from Felton; Nurses
 aid 1, 2, 3; Teacher's aid 1, 2, 3.





Shirley Talley
 "Rabbit"
 "Do you think we should?"
 "Do you think we should take the chance?"
 D. E. 1, 2.



Eric T. Tarburton
 "Chevy is the best."
 F.F.A. 1, 2, 3, 4; President 4.



Nancy Carolyn Taylor
 "Nancie"
 "Do your own thing."
 Business Club 1; Drama Club 3;
 F.T.A. 4; Glee Club 2, 4; A.F.S. 4.



Alfred Thomas
 "Al"
 F.F.A. 1, 2, 3, 4; Treasurer 3;
 Vice-President 4.



Maragaret Susan Thomas
 "Margo"
 "What ...?" "You're kidding."
 "Come off it."
 S.O.P. 4; F.B.L.A. 4.



Arlien Thompson
 Drama Club 3, 4; Latin Club 3, 4;
 Science Club 3; F.T.A. 4; Math
 Club 4; Prom Committee.



Theresa Kay Toner
 "Teri"
 "To each, his own"
 Transferred; V.I.C.A. 4.



Scott A. Townsend
 "Scout"
 Football 2, 3, 4; Basketball 2;
 Band 1; Rider Staff 3, 4.



Charlotte Tribbett
 "Beetle"
 "What?" "You must be mad!"
 Library Club 1; Glee Club 1; D.E.
 1, 2; F.N.A. 1; Drama Club 1.



James Tumbleson



**Dorothy Beatrice
 Underwood**



Sandra Vandruen
 "Sandy"
 "oh, right!"
 Transferred from Dover 3; A.F.S.
 3, 4; F.T.A. 4; Tri-Hi-Y 2, 3, 4;
 Treasurer_3; Modern Dance Club
 2; D.E.C.A. 3.



Mark Vanderlee
 "Bud"
 "When you're in a plane don't
 get bombed out!"
 Transferred.



Ann Villarroel



Ronald Dawson Voshell
 "Buck"
 "Oh, yeah!"
 D.E.C.A. 1, 2.



Richard Walton
 "Oh! Pss—shaw goofed again!"
 Latin Club 1, 2, 3, 4; Ser Sgt. at
 Arms 1; Science Club 2, 3, 4;
 Keeper of Equipment 4; Science
 Symposium 2; Probationary
 member of Honor Society 2, 3,
 4.



Andrew Werner
 "Andy"
 "Why not!!"



Kathleen Mary West
 "Kathy"
 "You wish!!"
 Honor Society 2, 3, 4; Traffic Safety Squad 1, 2; Senior Soul Section 4; Basketball 1, 2; Student Council 1; Rider Staff 2, 3, 4; Math Club 2, 3, 4; Latin Club 2, 3, 4; Secretary 3.



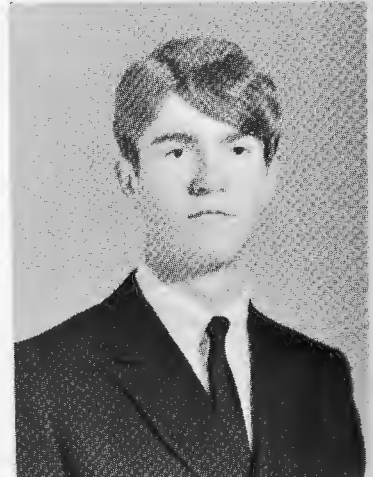
Charles Whitehurst
 "Chuck"
 "Hey Metheny, tell Rahmes the answer!"
 Spanish Club 2, 3, 4; Honor Society 2, 3, 4; Mu Alpha Theta 2, 3, 4; Lettermen's Club 2, 3, 4.



Maureen Roberta Wild
 French Club 2, 4.



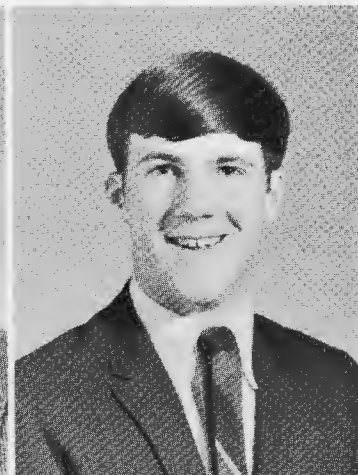
Steve Williams
 "Worm"
 "You ain't lyin'."
 Cross Country 1.



Gary R. Witt
 "Yea"
 Orchestra 1, 2, 3, 4.



Glenn L. Wofford
 "Kong"
 "Poindexter lives!"
 Football 1, 2, 3, 4; Lettermen's Club 2, 3, 4.



Scott Wood
 "Scott"
 Lettermen's Club 2, 3, 4; Band 1, 2, 3, 4; Pep Club 1; Wrestling 3, 4; Cross Country 2, 3, 4; Track 2, 3, 4; Basketball.



ABOVE ALL . . .



SHE GAVE PATIENCE

Mrs. Shirley Jarrell
B.A. Marshall University
Head of English Dept.; Composition and Speech; English; Senior Class Sponsor



AND WE THANK HER

CLASS OF "71"



Cort Massey	President
Marilyn Parker	Secretary
Carol Lissy	Treasurer
Nora Madden	Vice President



Rick Acosta Andy Aiken Joseph Albright David Allen Ginger Angstadt Nancy Jo Anthony Stan Anthony Paul Apostalina Jim Arthur



John Arthur Roberta Arthur Barbara Austin Bill Austin Tyeise Ayers Linda Baily Jim Bather Pat Berger Frances Bergold



Joe Birch Pam Bixby Gail Blann Pete Bogetti Corrine Bordley Dennis Bordley Karen Bowden Frances Bowers Keith Boyette



Carla Bramble Richard Brodeur Harry Brooks David Burke Houston Burris Myrtle Burris Shirley Caldwell Greg Carney Danny Carey



Kathie Chadwick Bob Carrico Lawon Cobb Jack Collier Lisa Conner Michelle Cool Debbie Cooper Janice Coronite Gil Cosdon



Ricky Cox Jill Cravens Terry Cripps Mary Cross Jo Ann Daniels Carol Davis Susan Dean Cathy deBloois Bob DePue



Carl Dickerson

George Dill

Paul Dill

Pat Dolan

Sue DolBow

Gerry Donnelly

Beverly Downham

Sylvia Driggus

Lewis Duncan



Mike Dunlop

Dave Emswiler

Joyce Evans

James Fennemore

Robin Failing

Patti Fields

Terri Finazzo

Karen Fones

John Forbes



Michael Forbes

Glen Ford

Arthur Fortson

Barbara French

Rita Gaidis

Betsy Gamberg

Bruce Glanden

Gloria Glanden

Craig Goldberg



Cathy Golden

Peggy Gonzales

Dana Gooden

Lorraine Goodman

Ruth Gorman



Debbie Graham

Gilbert Graves

Pat Graziosi

Barbara Haas

Carolyn Hall



Pamela Hamilton

Tom Hammond

Caron Harmon

Gloria Harris

James Harrison





Barry Harvath

Rita Harvey

Beverly Hay

Connie Hearne

Eddie Helker

Ruthann Hollinger

Christy Horton

Shirley Hughes

Kathleen Hutchins



Kathy Hutchins

Charles Jackson

Jeffrey Jeffers

Laurie Jessop

Carol Johnson

Tommie Jones

Eydie Jopp

Tony Kaczka

John Kellam



Jim Keller

Carolyn Kelley

Jim Kenney

Stephen Kerns

Gary Killen

Sandi Kirk

Freddie Kitchen

Pat Kitchen

Spring Kittleson



Debbie Klapp

Beth Knouse

Steve Koerner

Sue Kolonia

Debbie Kowinsky



Mary Krupka

David Kucek

Arthur Kuhling

Donald Landing

Ron Landing



Robert Lefort

Cathie Lemay

Paul Lemieux

Susan Little

Norma Littleton



Carol Lissy



Joe Lobaccaro



Mary Lorea



Cathy Luff



Bob McCulloch



Colleen MacDonald



Dianne McDonald



Walter McDougall



Deloy McGinnis



Bobby Mack



Nora Madden



Paul Maddox



Cort Massey



Eileen Mayan



John Mears



John Miller



Randy Miller



Clayton Minear



Steve Moore



Cynthia Morris



Frank Morris



Jan Murray



Paul Muzik



Michael Noble



Jackie Nye



Carol Oestreich



Jim Oldham



Steve Oldham



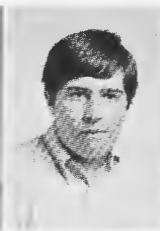
Joe Opperman



Ernie Padilla



Janet Malie



Bill Malone



Karen Marr



Bob Mehrtes



Pat Meredith



Jim Miller



Bruce Montgomery



David Moore



Doug Moore



Tom Morris



Tom Morris



Bonnie Mosley



Eddie Palmer

Art Pankoff

Dennis Parker

Marilyn Parker

Cledus Paskins

Debbie Patterson

Diane Pepper

Jean Pfannebecker

Larry Pippin



Martha Prah

Mike Rash

Richard Reed

Michael Regan

Glenys Reh

Stephanie Reinker

Ron Remus

Virginia Reynolds

Kim Richardson



Brenda Robertson

William Roscoe

Robert Ross

Kathy Rowley

Doug Russum

Gordon A. St. Mary

Rosalind Sapp

Roy Schepens

Kathryn Schmidt



Joe Schurter

Lester Scott

Cheryl Scranton

James Sells

Robert Sells

Rosalie Seward

Melissa Shaffer

Mike Shahan

Bobby Shelton



Barbara Shinn

Betty Short

Valerie Shorts

Robert Shotzberger

James Slaughter

Pat Spayd

William Spence

Spring Spicer

Tim Steckelberg



Barbara Sterner

James Stewart

Richard Stricklin

Cynda Stone

Bev Surguy

Dorothy Swain

Leslie Taylor

Ursula Thomas

Jerry Thompson



Suzanne
Thompson

Wanda
Thompson

Bill
Tieman

Clifton
Tiighman

Ralph
Todd

Rick
Torres



Loretta
Tripp

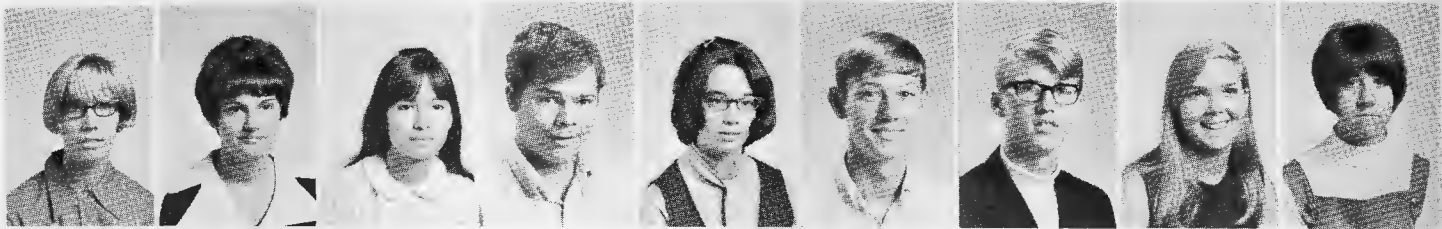
Sandy
Truitt

Mary Alice
Tudor

Seth
Tuthill

Suzanne
Urey

Gary
Utley



Beverly
Vanderwende

Marsha
VanSant

Sylvia
Villarroel

Paul
Vitanza

Sue
Wagner

James
Waldbusser

Gary
Walker

Cyndie
Wallace

Kathy
Wandall



Michael
Warren

Nancy
Warrington

Janet
Watson

Nancy
Webb

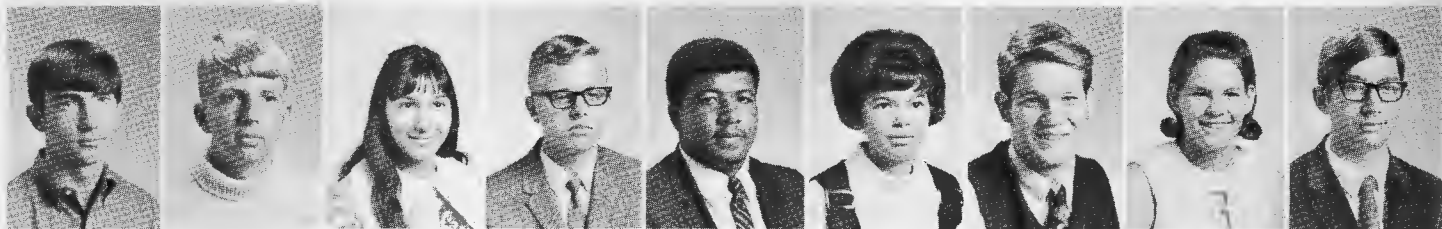
Karen
Webb

Walter
Weeks

Nancy
Weiss

Paul
Welzeh

Michael
Weyant



Dale
Wharff

Dean
Wheeler

Roxana
Whiting

John
Wild

Alvis
Wilkins

Linda
Willard

Steve
Willey

Denise
Williams

Greg
Williams



Terry
Witt

Donna
Woodard

Linda
Woodard

Patricia
Woodard

Ardesa
Wright

Marian
Yelverton

Wilford
Yelverton

John
Zimmerman

CLASS OF "72"



Valerie Weeks	President
Anita Petty	Vice President
Mary Appenzeller	Secretary
Patti Powell	Treasurer





Donna Aalders
Mark Adams
Roger Akers



Barbara Albright
Cathy Andrews
Mary Appenzeller
Kathleen Austin



Patricia Austin
Jim Bahder
Susan Baker



Joan Bartsch
June Bartch
Fonda Basnight
Terry Baughman



Joseph Berry
Nadine Bennet
Lynn Bennett



Jane Bensinger
Dianna Bickling
Donna Bilow
Cindy Black

Debbie Bloom
Debbie Bloth
Barry Ann Bolden
Michael Bounds



Carolyn Bowers
Laura Bowker
Debbie Brantly
Mike Brittingham

Stephen Brodeur
Bob Brown
Diane Brown
Jeff Brown



Wayne Buckle
Pat Burke
Merritt Burke
Raimundo Caballero

Pat Cain
Mike Camisky
Gordon Campbell
Anthony Casson



Linda Cataldi
Dinita Carney
Jane Carrico
Walter Carson



Barbara Carter
Christine Kaczka
Chip Clapp
James Clark

Joan Clarke
Pandora Cobb
Thomas Cobb



Kathy Coleman
Michelle Coleman
John Collier
Carol Collins

Mike Commons
Harry Consalo
Cyndi Cooper



Mike Corkle
Bob Cornell
Darlene Coulson
Allyson Crawford

Bill Cristy
Jackie Crum
Maureen Darling





Steve Davidson
Johnnie Deakins
Dennis Delmar
Kathy Demarie

Debbie Deveau
Sue Devroude
Shirley Dill



Bob Donovan
Sylvia Driggins
Pam Dube
Sue Dudley

Don Duffy
Rosemarie Dufraime
Beth Eberly



Debbie Elliott
Janet Englehart
Jo English
Larry Evans

Preston Evans
Rosanne Evans
Barbara Fibelkorn



Mike Figary
John Fillmore
Travis Fleming
Dennis Focht



Richard Foraham
Wanda Ford
Jan Fowler
Randy Fox

Glenn Francisco
Norm French
Tom French
Charlie Frost



Chris Gede
Steve Gedney
Gary Gehrmann
John Gibbs

Bill Gillis
Jean Gonzales
Dennis Courley
Pat Graf



Lajuana Grant
Debbie Gravell
Jeanne Graves
Dale Grice



Charles Gunderman
Steve Hahn
Irene Haley

Nancy Hall
Chris Hallenbeck
Fred Hallock
Betty Hamby



Meta Hampton
Veronica Hamrick
Donna Haneline

Thomas Harmon
Mary Harris
Jeff Harris
Catherine Harris



Vera Harris
Pat Harrison
Donna Harrison

Mary Harvey
Charles Hearne
Carol Heller
Kathy Hickey





Jan Hickman
Doris Hicks
Norma Hicks
Penny Hill

Sandy Hill
Connie Hobbs
Herbert Hobbs



Danny Holcomb
Kathy Hosterman
Reginald Huggins
Richard Hurd

Janice Hutchins
Vicki Hutchins
Paula Hutchins



Jim Irwin
Thomas Jackson
Billy Jardine
Michael Jelliffe

Jan Jenkins
Steve Jenner
Tom Jenner



Mike Jester
Debbie Johnson
Georgie Justice
Spencer Kelley



Mary Keller
Phyllis Kemp
Mike Kerns
Bonnie Kersey



Patty Kindred
Linwood Killer
Cindy Kirk
Robert Kittleson



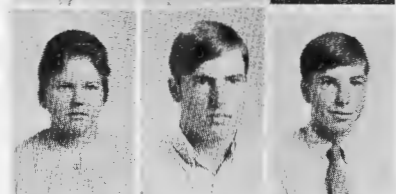
Charlene Klein
Edward Knight
Elwood Knight

Charles Kobb
Diane Koble
Billy Konrumpf
Koziski Connie



John Krasulak
Earl Kunkle
Niki Lafferty

Michelle La France
Paul Lambert
Carol Lane
Holly Lawrence



Peggy Lee
Jim Lemmons
Chuck Lewis

Tim Lewis
Nancy Lins
Judy Lomax
Susan Lorenz





Adriaau Mauzarares
 Maria Manzarares
 Cam Maas



Brenda Mack
 Barbara McClain
 Denise Maggart



George Meyers
 Lillie Mickens
 Sandra Miles



Mike Machen
 Chester McCulley
 Debbie McCully
 Chris MacInnes



Larry Marvel
 Paula Marsteller
 Thom Matthews
 Kathy Metcalf



Steve Miller
 James Minner
 Robert Minus
 Pat Mitchell



Rodney Mitchell
 Colette Miyo
 Mike Moran
 Debbie Moore



Dona Moore
 JoAnn Moore
 Eddie Motley
 Sandy Mumpower



Lesley Murphy
 Donald Nechay
 Francis Nichols
 Jon Nichols



Robin Neese
 Athena Nefsey
 Debbie Nelson
 David Nevins



Beverly Palmer
 Becky Patterson
 Luann Payne
 Bob Pecher



Jan Porter
 Rick Porter
 Pam Potter
 Jeff Poulliot

Lisa Nye
 Mary Olliver
 Bill Pajerowski



Patty Pepper
 Anita Petty
 Donna Phelps



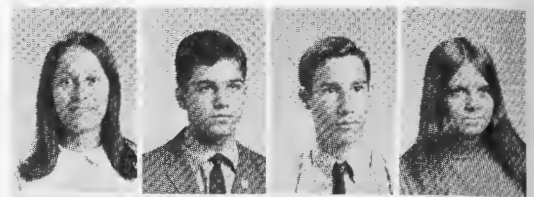
David Powell
 Patty Powell
 Evelyn Pratt





Peggy Prettyman
Debbie Price
Ann Pruett

Harriet Pruski
Vic Rash
Rick Redman
Linda Reed



Sherrie Reed
Larry Regan
Carol Reinker

Joe Richard
Teri Richardson
Freeda Rigby
Lawrence Roe

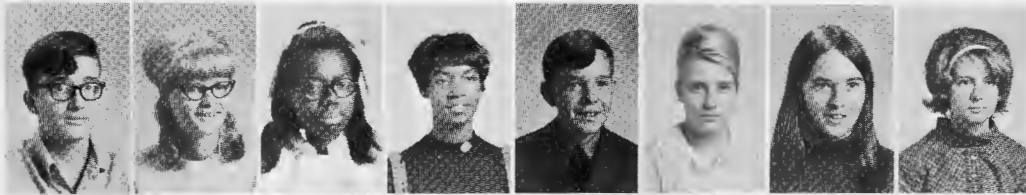


Claudia Rolon
Janice Rolsal
Ricard Roscoe

Tom Rosko
Ronlod Rucker
John Russ
Jon Ryan



Mike Slizzoni
Martha Sanders
Artisha Saulsbury
Deborah Saunders



John Saxton
Stephanie Schade
Barb Scott
Elizabeth Scott

Reggie Scott
Stephanie Scott
Willis Seaman
Kenny Sellers



Maria Semens
Sarah Shaffer
George Shank
Richard Shehorn

Karen Shinn
Claude Shockley
Coleen Shockley
Debbie Shockley



Joe Shockley
Mable Shockley
Nancy Shrum
Deanne Skalberg



Debbie Snellgrove
Carol Snyder
Spence Vic
Philip Spiering

Allen Stake
Kenny Stefanoski
Robert Steffens



Keith Sterling
Darlene Stubbs
Ronald Summers
David Swetland

Ed Swain
Gloria Swain
Joe Teaff



Debbie Thomas
Kathy Thompson
Robin Thornley
Terri Tieman

Renne Tomlinson
Theresa Torres
Alan Townsend





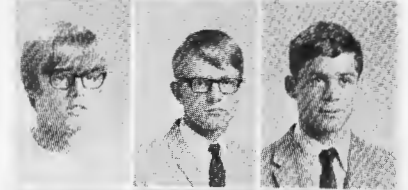
Karen Townsend
George Trimper
Earl Tribbett
JoAnn Truitt

Lisa Unruh
Bobbi Vandegrift
Sondra Vanderlee



Kathy Van Drunen
Charles Voshell
Clarence Voshell
Grace Voshell

John Walker
David Walls
Bill Walsh



Gregory Ward
Barb Warren
Linda Warren
Louise Warren

Debbie Wambold
Marine Warren
Donald Warrington



David Webb
Harold Webb
Valerie Weeks
Theresa Werner



Jeani Whalon
Veda White
Belinda Whitley
Doris Whitman

Dora Whittington
Debbie Wilhelm
Becky Wilkinson
Dean Willey



Jerry Williams
Linda Willeams
Joan Wilson
Don Winslow

Judy Wofford
Peggy Wolf
Donna Wood
Donald Woodall



Reginald Woodall
Harold Woodlin
Phillip Worthey
Steve Wothers



Harry Wyatt
Douglas Wyman



Cathleen Yancho
Steve Zimmerman



CLASS OF "73"



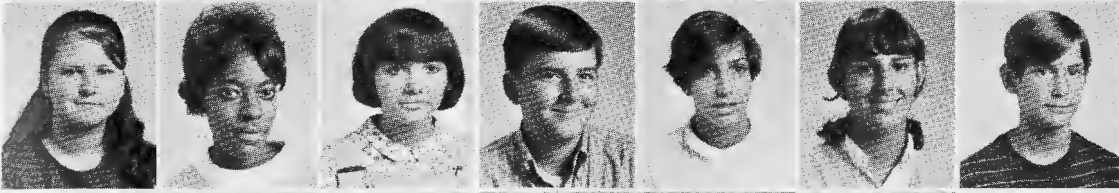
Joan Fogwell	President
Meg Kolonia	Vice President
Debbie Friudenberg	Secretary
Robin McHugh	Treasurer



James Absher
Richard Albright
Patricia Alexander
Charlie Angstadt
Linda Arrington
Bob Arthur



David Austin
William Austin
Cheryl Babcock
David Bailey
Robert Barlow
Gail Basnight
Steve Beasley



Karen Beebe
Ethel Benson
Donna Bentley
Robert Berger
Arlene Berni
Dona Berotti
Sam Birch



Garry Bodine
Patty Bosco
Jerry Bowers
Gary Bowman
Glenn Boyd
Karen Boyd
Karen Boyer



Linda Braxton
Keith Brodeur
Keith Brown
Janet Brown
Vanessa Brown
Tyrone Browne
Betty Bruns



Tom Bryson
Samuel Bucher
Wayne Buckworth
Mike Burke
Charles Burris
Dwight Burris
Jim Burris



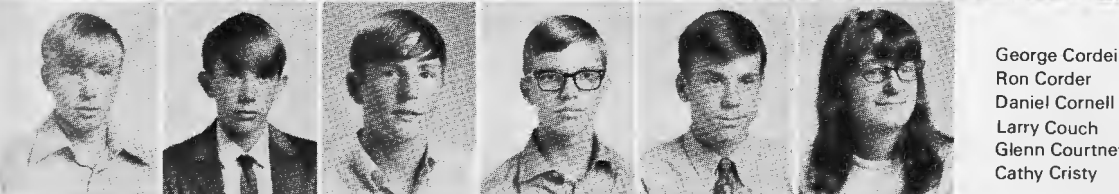
Lori Butler
Howard Buzzell
Tony Buzzell
Teri Caldwell
Robert Cameron
Patti Camp
Charlotte Campbell



Diane Carter
Ty Case
Charles Sterner
Pat Chase
Stephen Cimo
Raymond Clark
Beverly Clifton



Lesley Clopper
Robert Coleman
Paul Collins
Debbie Conrad
William Cook
Kendall Cool
Wynell Coppage



George Cordeiro
Ron Corder
Daniel Cornell
Larry Couch
Glenn Courtney
Cathy Cristy

Anthony Crabtree
 Colleen Cross
 Bonnie Dantonio
 June Daugherty
 William Dean
 Howard Dear
 Jeanne DePue



Thomas Deputy
 Allan Dix
 Howard Donze
 Johnny Dowell
 Judy Downes
 Constance Driggus
 Rick Dudley



Chip Dukes
 Sue Earley
 Alan Earnest
 Mark Ebling
 Wayne Ellison
 Delmas Failing
 Denise Failing



Linda Fairress
 Jimmy Faunt
 Dale Faulken
 Christina Faust
 Bill Fields
 Thomas Figary
 Charles Fisher



Darlene Fleming
 Mario Flores
 Patricia Floyd
 Terrie Flynn
 Bobby Focht
 Joan Fogwell
 Arlene Forbes



Dennis Forbes
 Gloria Ford
 Johnnie Ford
 Sandy Ford
 Guy Fowler
 Paul Fransisco
 Jill Fritz



Debbie Friudenberg
 Steve Fulkerson
 Donna Fullman
 Barbara Furber
 Colleen Gallaher
 James Gamble
 Patricia Gedney



Robert Gertz
 Mary Gibbons
 Linda Gibson
 Henry Giddens
 Mike Gillis
 Ken Glenden
 Janet Goldsborough

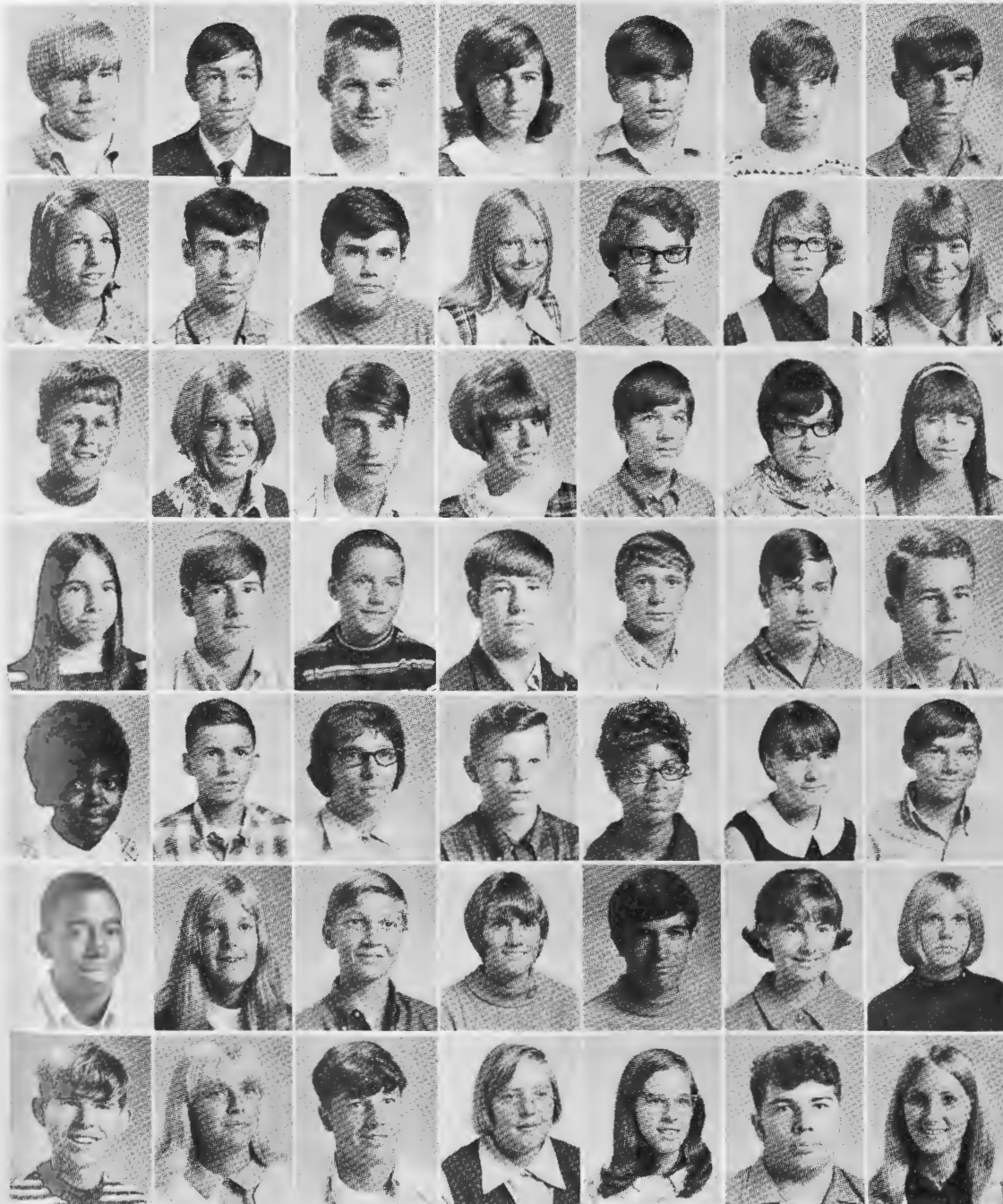


Kathleen Goodman
 Judith Gordon
 Bill Gorman
 John Graham
 Lori Graham
 Diane Gravatt
 Gloria Graves



Kathy Green
 Robert Greene
 Debra Greenfield
 Debbie Grier
 Bryan Griffin
 Nancy Haas
 Pat Halfen





Dan Hall
 Michael Handges
 Keith Harker
 Sue Harriet
 Bob Hartley
 Robert Harvey
 William Harvey

Barbara Haxton
 Joe Haxton
 Richard Hayes
 Marie Hedges
 Joyce Hodges
 Gina Hoffstadt
 Sandy Holcome

Randy Holderbeum
 Cyndy Hollinger
 Larry Hollinger
 Gayle Hollingsworth
 Charles Horne
 Elaine Horne
 Kathy Hoster

Linda Hoster
 Danny Hosterman
 Marc Howard
 Jeff Hubbard
 Sammy Hughes
 Doug Hunn
 Terry Hunter

Joan Hurd
 David Huchins
 Linda Huchins
 Steve Huttie
 Dianne Jackson
 Kathy Jackson
 Gerald Jennings

Joe Jones
 Lucilla Jones
 Leo Kelly
 Sue Kelly
 Kenneth Kennedy
 Linda Keuger
 Gayle King

Don Kinsey
 Penny Kittleson
 Ralph Kling
 Zana Knutkowski
 Bonnis Kobb
 David Koble
 Meg Kolonia

Denise Kowinsky
 Peggy Kramesas
 Renee LaFrance
 Robert Landing
 Keith LaVere
 Chris Ledwith
 David Lee



John Lehman
 Betty Lemmons
 Art Lewis
 Jane Lewis
 Gail List
 Mark Lloyd
 Mike Lloyd



Lorraine Lodholz
 Floyd Longfellow
 Mike Lord
 Gail McClary
 Mike McGraw
 Douglas McCray
 Pat McDaniel



Cheryl MacDonald
 Ralph McDougall
 Rodney MacDougall
 William McGaughey
 Margie McGhee
 Pat McHenry
 Robin McHugh



Joe MacInnes
 Mary MacKillin
 Paula McKinney
 Mike McLaughlin
 Gene McNatt
 Gregory Madden
 Thomas Malie

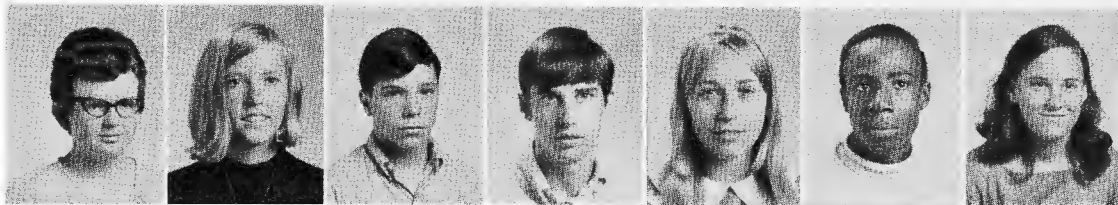


Nancy Maloney
 Colleen Maloy
 Carol Manlove
 Elwood Marker
 Lori Martin
 Bill Mason
 Randy Massey



Neil Mathison
 George Melvin
 John Melvin
 Linda Melvin
 Willard Melvin
 Steve Meredith
 Robert Meyers





Donna Miller
 Patricia Miller
 Paul Minner
 Keith Minner
 Toni Mitchell
 Acie Mitchell
 Linda Morris



George Anne Moyer
 Benita Murphy
 Mary Murphy
 Cathy Myers
 Art Naumann
 Melvinia Neal
 Debra Neizer



Don Neizer
 David Oldham
 Steve Oldham
 William Opperman
 Donnie Painter
 Bob Pajeroski
 Robert Palmer



Eugene Park
 Janice Parker
 Wanda Patterson
 Dame Pecher
 Maria Pena
 William Perkins
 Vivian Perrin



Margie Peterson
 Carol Phelps
 Emilie Philips
 Deborah Piercy
 Millard Pippin
 Leroy Plank
 Lynda Prescott



Mike Pruet
 Philip Pulleyn
 Diane Purnell
 Randy Pyne
 James Queen
 Donald Rash
 Thomas Rash



Scott Reagen
 Debbie Redick
 Patti Reed
 Paula Reh
 Shirley Reh
 David Rehkamb
 Dorothy Reilly



John Reinert
 Kenneth Reitsma
 Lynn Renner
 George Rhinehardt
 Jim Rhoads
 Michael Richard
 John Rissmiller



Deanna Robertson
 Reginold Rolsal
 Jack Rosko
 Danny Romesburg
 Catherine Ronsom
 Debbie Rouse
 Edie Ryan



Tina St. John
 Roberta Sapp
 Doris Sells
 David Schellinger
 Herbie Semans

Dave Schepens
Eddie Schraeder
John Scott
Richard Scott
Bill Scott
Jim Scuse
Marc Seeley



Sharon Shahan
Theresa Shahan
Steven Shank
Cathie Sheranko
Jim Sheranko
Bruce Shelton
Larry Shepherd



Bill Shockley
Harold Shockley
Larry Shockley
Richard Shockley
Joni Shotzberger
Denise Simmons
David Sipple



Deric Snow
Ann Soltis
Debbie Spayd
Manuel Speicher
Tom Stanton
Carlene Starke
Robert Stephenson



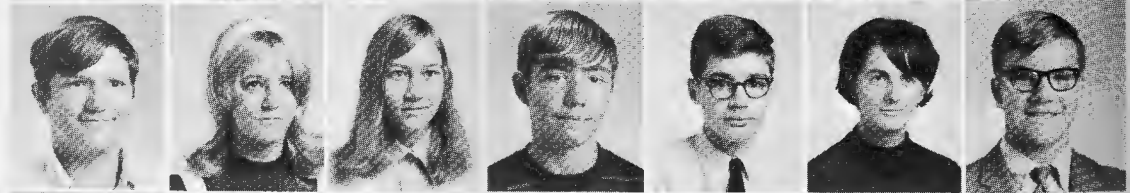
Haie Stevens
Vera Stevens
Susan Stewart
Edward Stone
Kathy Stone
David Stokes
Ann Stubbolo



Cindy Sylvester
Willie Swain
Cheryl Sweeney
Laurie Tanner
Mary Tazelaar
John Tazelaar
Keith Terry



Brian Thomas
Parline Thomas
Ray Thompson
Robert Thompson
Candy Timbs
Tara Tisinger
Jerry Topolski



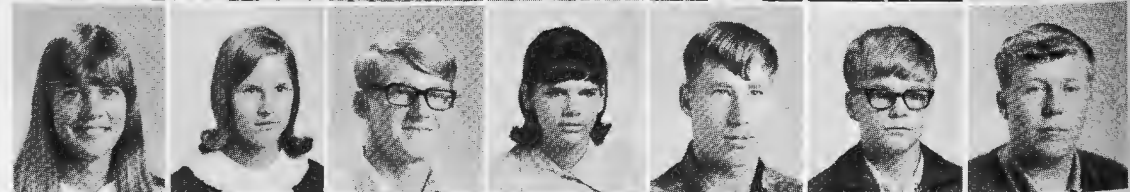
John Traegler
Sue Traves
Earl Trumbo
Janice Tucker
Dave Underwood
Debbie Underwood
Richard Utberg



Nancy Utley
Victor Valeski
Cindy VanSant
Coleen Vivartt
George Voshell
Joann Wafford
Robert Wagner



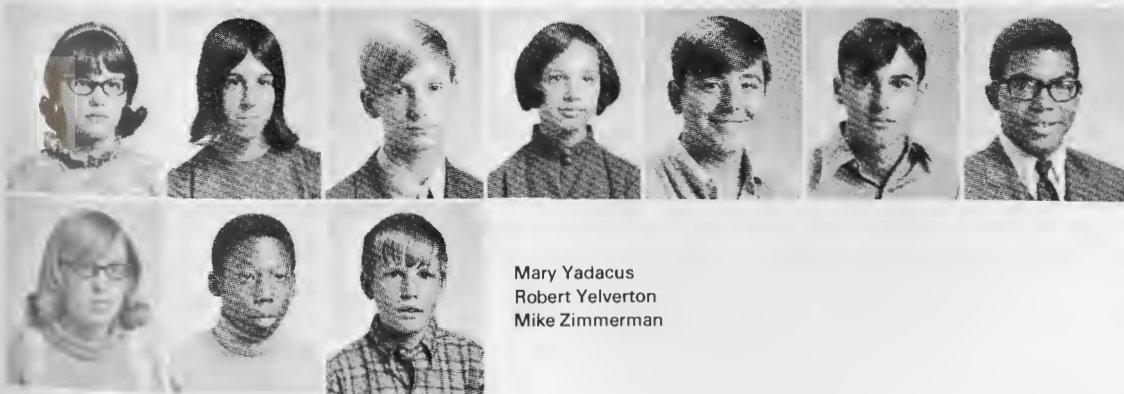
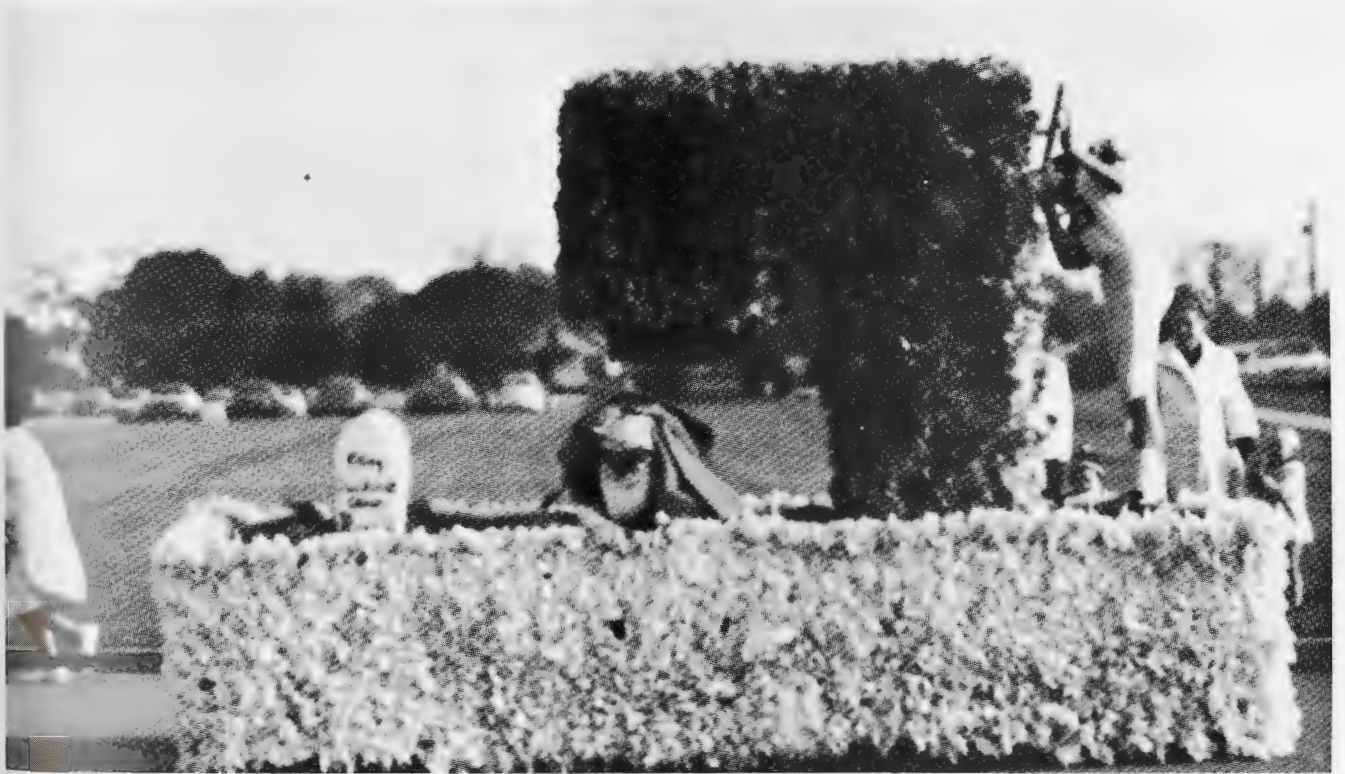
Randy Wallick
Mike Walton
Sylvia Wamboid
Nancy Waldbuzzer
Cheryl Warren
Hollis Warren
Dana Watford





Chris Webb
 John Webb
 Brenda Weeks
 Donna Welch
 Mike Weller
 Darid Wharff
 Donna Weatley

Joseph Wheatley
 Glenn Wilhelm
 Jackie Wilkerson
 Lee Williams
 Richard Wilson
 Dawn Winkler
 Linda Wisher



Karen Withrow
 Anita Wollison
 Danny Wood
 Gail Wood
 James Woodruff
 Michael Wooters
 Michael Wright

Mary Yadacus
 Robert Yelverton
 Mike Zimmerman

BOARD OF EDUCATION

(left to right)
 Dr. Spence
 Dr. Harmic
 Dr. Saulsbury
 Mr. West
 Dr. White
 Mr. Bennett
 Mr. Clinton



ADMINISTRATION

Dr. Warren White
 B.A., University of Texas
 M.A., University of Texas
 E.D., George Peabody College
 for Teachers
SUPERINTENDENT
CAESAR RODNEY
SPECIAL DISTRICT



Mr. George Benner



Mr. Archie R. Jordan
 B.S., University of Alabama
 M.E., University of Delaware
 M.A., University of Delaware
DIRECTOR OF SECONDARY
EDUCATION
CAESAR RODNEY SPECIAL
SCHOOL DISTRICT



Mr. Frank Wolfe



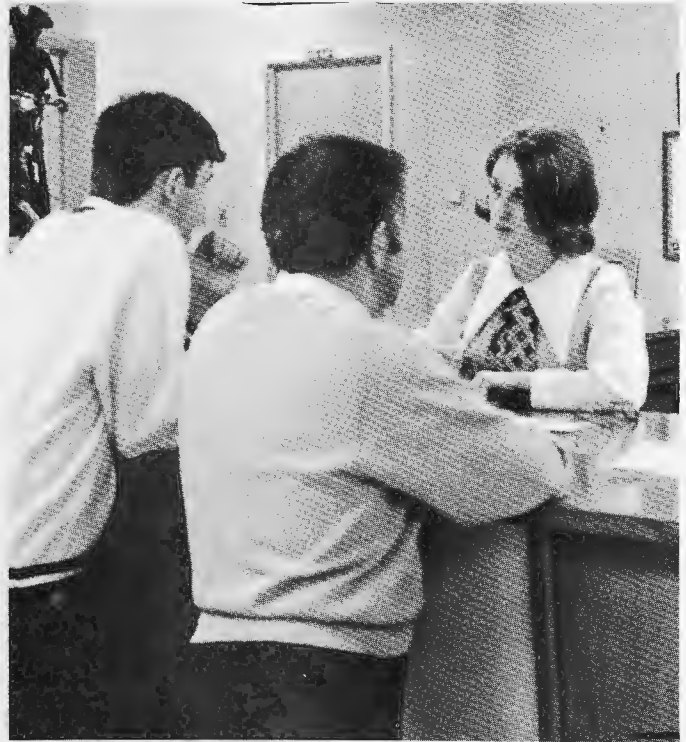
PRINCIPALS and SECRETARY



mr. clay



mr. blakey



miss bell



mrs. layton



mr. buckley

GUIDANCE

miss miller



miss st. mary



mr. gerzin



mr. sherer



mrs. jennings



mr. englehart



mr. leiberman — c. thompson



miss akers

SPECIAL SERVICES



mr. caldwell

mrs. shoemaker



mrs. cool



mr. conley



mr. dean



mr. hill



mrs. marsh



mrs. abraham

*Raul -
Bonne chance à
un gentil garçon et
un étudiant excellent!
Apreame Wiedmann*



mrs. weidmann
miss fiske



mrs. mohle



miss kopinke



mr. magrone



LANGUAGES

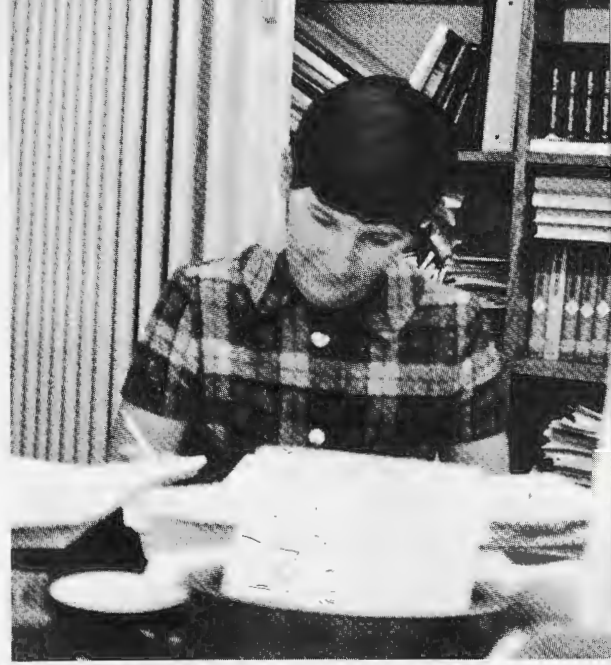
ENGLISH



mr. wallace



mrs. kneeland



mrs. rankin



mr. grace



miss bradway



miss groves



miss klees



miss warren
miss attack



mrs. jarrel



mr. ward

SOCIAL STUDIES



miss gehling



mr. buckworth



mr. quirk

mr. o'brien

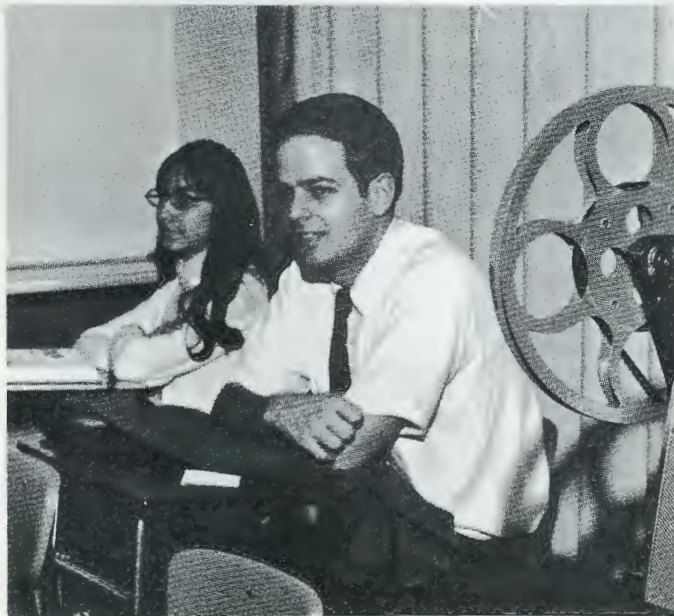


mr. silcox

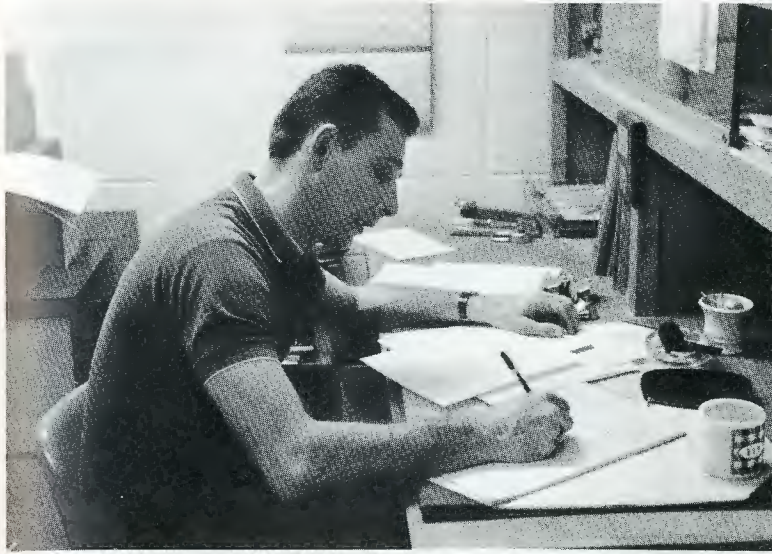


mr. west

mr. shaffer



Gary, I've enjoyed having such a fine student and young man as you in my class. Mr. Shaffer



mr. isenberg

*Best of
luck in the
future Powell*



mr. powell
miss ries

PHYSICAL EDUCATION



mr. kane



miss holland





D. R. Williams
mr. williams



mr. crouch *Best of luck in the future to the winners of the C.R.*



Memorial Insect Collection, A.R.C.
mr. evans
mrs. saltern

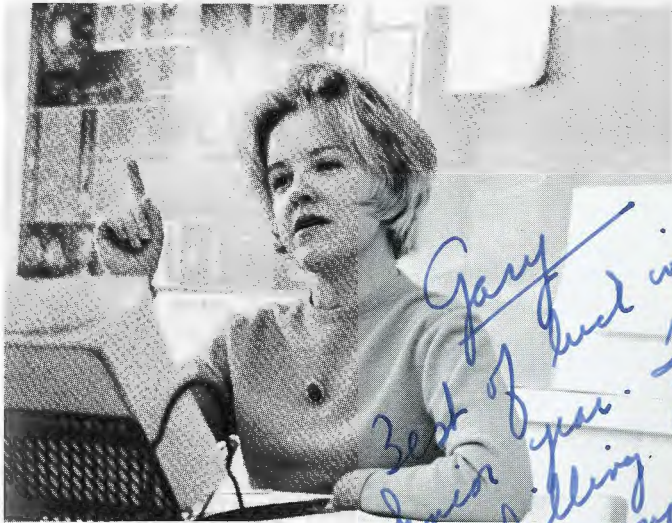


mr. benner

Best wishes to a good Chemistry student. It has been a pleasure having you in my class
SCIENCE

Sincerely yours
Mr. Benner





miss hall



mrs. lowe



mr. carter



mr. leaming



mrs. shoupe

MATH



mr. taylor



mr. johri

*Gary
Best of luck in your
Senior year. Thanks
for filling in for
me a couple times
this year.
A.E. Hall*

BUSINESS AND VOCATIONAL TRAINING



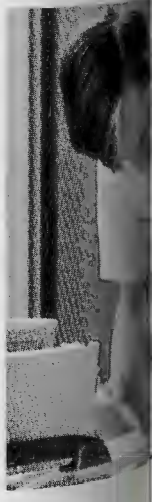
mrs. joseph
mrs. mcdowell



mrs. brackett
mr. billys



mr. lewis





mrs. runyan



mr. watson



mr. annett



miss holloman



mrs. lewis



mr. lytle



mr. short

CAFETERIA PERSONNEL



mrs. kersey



mrs. bell



mrs. powell



mrs. lemp



mrs. dice



mrs. butler



mrs. wood



mrs. west



mrs. ford



mrs. analore



mrs. smallwood



mrs. tice

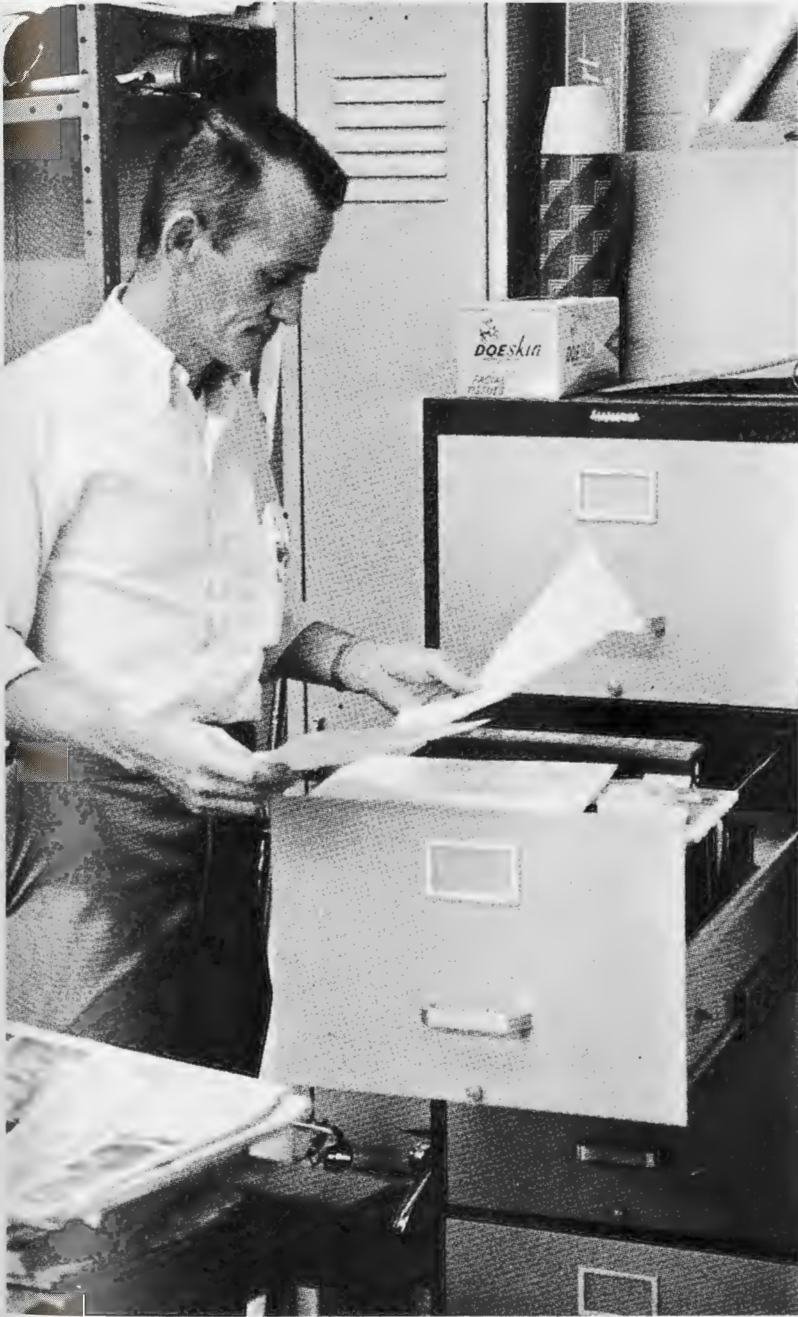


mrs. finazzo



mrs. knight

CUSTODIANS



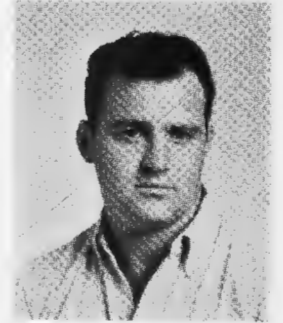
mr. klein



mr. warren



mr. cook



mr. holleger



mr. barke



mr. smith



mr. cooper



mr. singleton



mr. bowers



mr. scott





Page 16



Page 118

CIRCLE

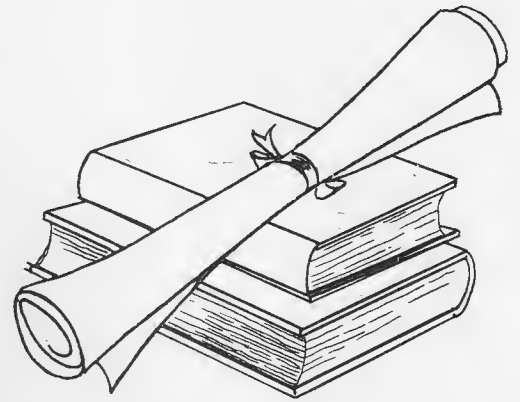
ENLIGHTEN

VEND

DEPRESS

REWARD

EXECUTIVE CLUB



FIRST ROW: K. Hutchins, B. Harmic, N. Taylor, M. de Bloois, L. Postlewaite, C. Pindzola, L. Tripp, B. Appenzeller, J. Lucks, D. Faircloth, SECOND ROW: B. Short, B. Clapp, M. Maloy, E. Tarburton, B. Metheny, H. Rigby, E. Arndt, J. Lobaccaro.



TRAFFIC-SAFETY SQUAD

The power of command is offered to each member. These students maintain order both in the halls and at home games. When on duty they are identified by their badges or shoulder bands.

OFFICERS: Mr. Short, Advisor; J. Lucks, Co-Capt.; M. Figary, Lt.; B. Pajerowski, Lt.; B. Kittleson, Lt.; B. Short, Co-Capt.



1st ROW: J. Lucks, C. Harmon, P. Camp, P. Kittleson, B. Short, S. Kittleson. **2nd ROW:** Mr. Short, M. Figary, B. Pajerowski, B. Kittleson, D. Lee, B. Arthur. **3rd ROW:** C. Sterner, P. Chase, D. Focht, T. Bryson, D. Wharff, S. Meredith, H. Webb.



CONCERT BAND

FLUTES

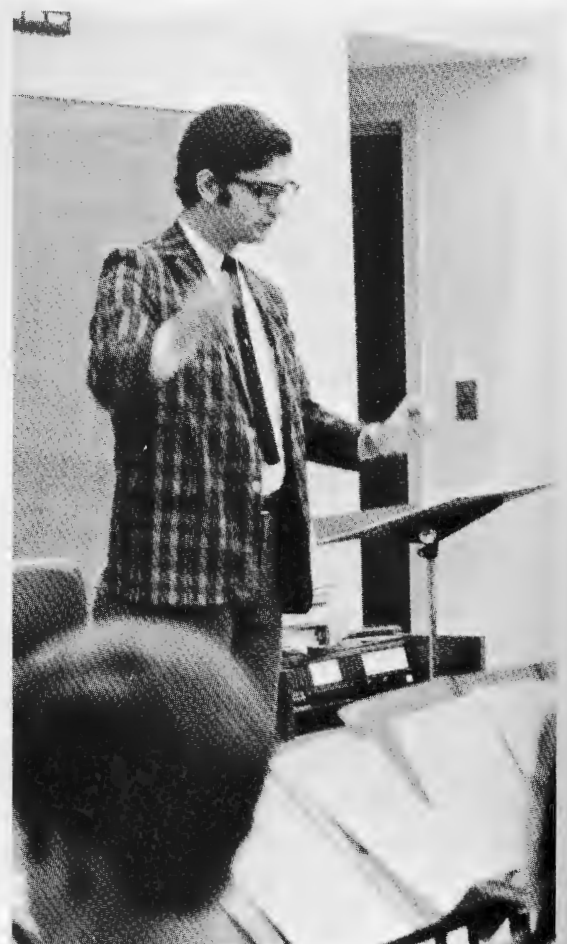
C. Kirk
 N. Webb
 J. Carrico
 D. Koble
 C. Warren
OBOE
 R. Rucker
CLARINETS
 L. Postlewaite
 Concertmistress
 C. Golden
 D. Aalders
 A. Pruett
 K. Bowden
 K. Boyette
 M. Krupka
 K. Hutchins
 B. Downham
 K. Webb
 P. Fields
 C. Yancho
 W. Weeks
 S. Thompson
 J. Daniels
 R. Roscoe
 T. Tieman
 C. Wallace
 K. Sellers
 C. Bordley
 R. Neese
 S. Lorenz
 J. Collier
 C. Babcock
 N. Weeks

C. Sylvester

N. Waldbusser
 W. Carson
 S. Reh
 D. Sells
 G. Wilhelm
ALTO CLARINET
 B. Bordley
 J. Clarke
BASS CLARINET
 R. Steffens
 D. Elliot
 G. Angstadt
ALTO SAXOPHONES
 B. Eberly
 P. Hutchins
 N. Haas
 J. Traegler
 S. Brodeur
TENOR SAXOPHONES
 T. Leon
 J. Hubbard
BARITONE SAXOPHONE
 J. Judd
CORONETS
 C. Donovan
 S. Hahn
 B. Patterson
 L. Marvel
 R. Gamberg
 P. Meredith
 S. Wood
 J. Hutchins
 H. Brown

D. Underwood

C. Dukes
 B. Griffin
 J. MacInnes
FRENCH HORNS
 D. Allen
 B. Kobb
BARITONE HORNS
 L. Kling
 P. Lambet
TROMBONES
 R. Carrico
 D. Webb
 H. Wyatt
TUBA
 C. Kobb
PERCUSSION SNARE DRUM
 B. Darling
 A. David
 G. St. Mary
 R. Wagner
 A. Lewis
 D. Kowinsky
 C. Webb
 V. Valeski
 H. Webb
BASS DRUM
 G. Gehrman
 K. Glanden
CYMBALS
 J. Englehart
 C. Angstadt
TYMPANI & BELLS
 J. Englehart





Executive Board: C. Golden, P. Hutchins, C. Donovan, A. Pruett, S. Wood, J. Englehart, L. Postlewait, Mr. Englehart.



Senior Members: 1st ROW: D. Allen, B. Darling, B. Bordley, L. Postlewait, A. David. 2nd ROW: C. Donovan, R. Gamberg, S. Wood, J. Judd, L. Kling, T. Leon.

MARCHING BAND 1969-1970

Director—Mr. Englehart
 Drum Major—K. Sellers
CLARINETS
 L. Postlewaite
 C. Golden
 K. Hutchins
 K. Bowden
 B. Downham
 P. Fields
 C. Wallace
 K. Boyette
 C. Babcock
 N. Waldbusser
 G. Angstadt
 S. Thompson
 M. Kurpka
 R. Neese
 R. Roscoe
 N. Maloney
 B. Kobb
 C. Bordley
 J. Daniels
 R. Rucker
 C. Yancho
 W. Curson
 C. Sylvester
 S. Lorenz
 W. Weeks
FLUTES
 C. Kirk
 J. Carrico
 N. Webb
 C. Wood
 D. Koble
ALTO CLARINET
 B. Bordley
BASS CLARINET
 R. Steffens
 D. Elliott
ALTO SAXOPHONES
 B. Eberly
 P. Hutchins
 N. Haas

TENOR SAXOPHONES
 J. Hubbard
BARITONE SAXOPHONES
 J. Judd
TRUMPETS
 S. Hahn
 B. Patterson
 J. MacInnes
 P. Meredith
 R. Gamberg
 C. Dukes
 L. Marvel
 C. Donovan
 B. Griffin
 S. Wood
 D. Underwood
BARITONE HORNS
 L. Kling
 P. Lambert
FRENCH HORN
 D. Allen
TROMBONES
 R. Carrico
 D. Webb
 H. Wyatt
SOUSAPHONE
 C. Kobb
PERCUSSION
BASS DRUM
 G. German
 K. Glanden
CYMBOLS
 J. Englehart
 C. Angstadt
SNARE DRUM
 B. Darling
 A. David
 G. St. Mary
 A. Lewis
TENOR DRUMS
 R. Wagner
 D. Kowinsky



COLOR GUARD: Banner Carriers; M. Keller, P. Powell. Rifle Carriers; N. Freeman, A. Crawford. Flag Carriers; B. Clapp, Capt., H. Cravens, C. Kaczka.



Baton Twirlers: J. Clarke, T. Tieman, H. Lawrence.



DIRECTOR: Mr. Edwin F. Englehart.



Flag Twirlers: A. Pruett, K. Webb, D. Aalders.

FIRST VIOLINS
 D. Gravell
 J. Lobacarro
 B. Short
 SECOND VIOLINS
 H. Coppage
 L. Connor
 L. Dennis
 C. Pinzola
 B. Mack
 VIOLA
 N. Madden
 C. Klien
 B. Dean
 CELLO
 S. Ayrault
 G. Witt
 N. Freeman
 STRINGBASS
 T. Witt
 C. Maas
 PIANO
 B. Clapp
 FLUTES
 N. Webb
 C. Kirk
 OBOE
 R. Rucker
 CLARINET
 L. Postlewaite
 C. Golden
 SAXOPHONE
 B. Eberly
 T. Leon
 TRUMPET
 C. Donovan
 S. Hahn
 FRENCH HORN
 D. Allen
 TROMBONE
 B. Carrico
 D. Webb
 SOUSAPHONE
 C. Kobb
 PERCUSSION
 TIMPANI
 J. Englehart
 SNARE DRUM
 B. Darling



ORCHESTRA



SENIORS: D. Allen, B. Darling, T. Leon, N. Freeman, C. Donovan, C. Pindzola, H. Coppage, S. Ayrault, G. Witt



L. Dennis, L. Postlewaite.



OFFICERS: D. Gravell, V. Pres.; C. Pindzola, Pres.; H. Coppage, Lib.; N. Madden, Sec.; L. Connor, Treas.



Accomp.: B. Clapp, J. Pruett



ENSEMBLE: FIRST ROW: J. Englehart; D. Gravell. SECOND ROW: B. Clapp, M. Maloy, L. Postlewaite. THIRD ROW: J. Kellam, H. Coppage, D. Emswiller.

FIRST ROW: P. Hutchins, G. Justice, D. Gravell, J. Englehart, N. Freeman, B. Darling, N. Taylor, Q. Minus, S. Lorenz, A. Pruett, K. Hutchins, S. Perry, J. Cooper, R. English, P. Harrison, SECOND ROW: N. Maddon, M. deBloois, C. Matthews, D. McCoy, J. Dunn, G. Angstadt, P. Dixon, B. Alexander, N. Bennett, C. deBloois, B. Short, J. Bensinger, J. Pfannebecker, P. Burke, K. Metcalf, Miss Marsh, THIRD ROW: G. Brougher, D. Patterson, B. Lemmons, C. Horton, D. Bilow, D. Kowinsky, M. Peterson, B. Clapp, M. Maloy, B. Bordley, L. Postlewaite, D. Underwood, B. Shinn, J. Pruett, G. Danneman, FOURTH ROW: V. Rash, K. Sellers, G. Corder, B. Metheny, H. Coppage, T. Witt, R. Roscoe, S. Hahn, D. Rhames, G. Williams, J. Kellam, C. Kobb, D. Emswiller, H. Wyatt, T. Mattews, D. Webb.





ell, N. Freeman, R. English. **SECOND ROW:** T. Matthews, C. Kobb, D. Rhames,

SENIORS: FIRST ROW: Nancy Freeman, Paulette Dixon, Brenda Alexander, Gail Danneman, Sue Perry, Janet Cooper. **SECOND ROW:** Julie Dunn, Nancy Taylor, Beverly Darling, Debbie McCoy, Janet Pruett, Dorothy Underwood. **THIRD ROW:** Maria de Bloois, Lorraine Dennis, Linda Postlewait; Chris Mathews, Betsy Clapp, Ranita English, , Brenda Bordley. **FOURTH ROW:** Jean Brougher, Hartzell Coppage, Gary Corder, Don Rahmes, Bob Metheney, Maggie Maloy.

OFFICERS: Seated: B. Clapp, Pres.; J. Pruett, Accomp.; R. English, V. Pres.; B. Bordley, Sec.; M. Maloy, Treas.; B. Darling, Libr.



GLEE CLUB

CO-ED HI-Y

This most charitable organization extends a helping hand to needy families each year. Their goal is to demonstrate the goodness and Christianity of high school students by serving the community in any way possible. Each student strives to share his high ideals of life with others less fortunate.



P. Hutchins, S. Thompson, V. Pres.; J. Englehart, Sec.; P. Fields, Treas.; Mr. Englehart, Sponsor.

K. Webb, J. Daniels, U. Thomas, P. Burke, J. Hutchins, S. Lorenz, B. Short, M. Krupka, K. Sellers, P. Meredith, B. Downham, J. Collier, J. Graham, J. Taza-laar, H. Wyatt.



PEP CLUB *Oh! How Cute!!*



OFFICERS: Mr. Carter, Sponsor; R. Sapp, Pres.; B. Miller, Treas.; G. Kelley, Sec.; S. Scranton, V. Pres.



Go Riders!!! is a commonly heard phrase by the Pep Club, which encourages school spirit. These energetic people attend all games giving support to our players. They delve school spirit by selling buttons, ribbons, and stickers for games. Through the artistic hands of the sponsor, Mr. John Carter, and members, students are kept well informed of all games.



FIRST ROW: L. Bennett, P. Burke, P. Hutchins, S. Shaeffer, R. Sapp, C. Lissy, P. Ries, G. Hoffstadt, D. Redick, J. Tucker, R. McHugh, J. Fogwell, B. Weeks, E. Phillips, **SECOND ROW:** B. Miller, M. Keller, C. Kaczka, T. Tieman, A. Petty, M. Tazelaar, N. Lins, J. Morris, C. Black, L. McGhee, A. Wollison, L. Graham, C. Campbell, T. Mitchell, **THIRD ROW:** M. Shaeffer, H. Pruski, C. Wallace, D. Mitten, D. Moore, P. Vitanza, K. Chadwick, L. Connor, D. Maggart, S. Kirk, R. Sapp, K. Wilson, L. Melvin, D. Grier, C. Oestrich, **FOURTH ROW:** M. Adams, N. Bennett, B. Kersey, K. Townsend, J. Smith, L. Leyshon, B. Hass, S. Ware, J. Malie, F. Bergold, B. Bolden, C. Phelps, T. Donnaly, M. Aurther, V. Hutchins, **FIFTH ROW:** N. Anthony, J. Bartsch, G. Kelly, B. Kittleson, P. Kittleson, C. Kline, R. Neese, L. Clopper, W. Coppage, N. Utley, J. Parker, D. Piercy, A. Soltis, L. Gibson, C. Starke, D. Pepper, J. Cooper, **SIXTH ROW:** M. Olliver, J. Bartsch, R. Darling, H. Lawrence, J. Jenkins, C. Rolon, J. Hickman, J. Daughter, S. Wambol, V. Weeks, Debbie Graham, B. Wilkinson, D. Williams, V. Shorts, Arliene Thompson, **SEVENTH ROW:** K. Metcalf, R. Evans, P. McDanials, S. Early, B. Austin, K. Wandell, N. Shrum, S. Van Drunen, C. Nechay, L. Taylor, C. Scranton, A. Wright, D. Kowinsky, D. McGee, D. Spayd, E. Mayan, M. Tudor, Ann Villarroel, **EIGHTH ROW:** J. Hutchins, D. Sells, P. Alexander.

LIBRARY CLUB

Better understanding of the library is promoted by the Library Club. Members work as assistants to the librarians and are given full command of the resource centers. The club shows their appreciation to the faculty for their cooperation by sponsoring a tea.



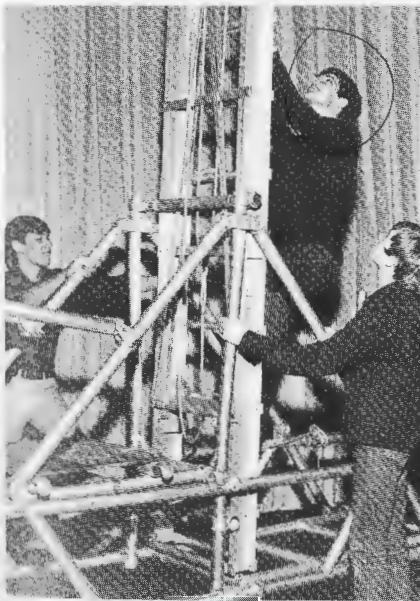
S. Cool, Miss St. Mary, C. Bordley

1st ROW: D. Spayd, M. Hedges, S. Stewart, D. Bloth, D. Sells, M. McKillips, C. Maloy, D. Greenfield, D. Miller, J. Parker, T. Tlyman, S. Reh. 2nd ROW: P. Halfin, D. Bilow, B. Wilkerson, C. Van Sant, L. Tanner, D. Clapp, M. Shaffer, D. Reddick, P. McDaniel, C. Wallace, D. Williams, M. Kolonia, M. Murphy, L. Jones. 3rd ROW: C. Sweeny, A. Petty, M. Van Sant, D. McCulley, M. Pena, B. Alexander, B. Mosley, J. Wilson, D. Shockley, V. Hutchins, J. Gonzalas, G. King, J. Bensinger, D. McGee, R. Sapp, J. Toss. 4th ROW: L. Jackson, J. Bowers, P. Woodar, C. Klein, B. Hamberg, N. Hicks, N. Bennett, A. Saulsbury, R. Evans, L. Bennett, S. Dudley, J. Daugherty, S. Wambold, D. Kowinsky, J. Pfannebecker, N. Littleton, S. Kittleson. 5th ROW: J. Whimp, J. Hubert, B. Pajeroski, C. Angstadt, B. Groffan, T. Lewis, H. Wyatt, M. Connors, D. Wyman, C. Dukes, R. Rucker, G. Wilhem, G. Carney.





C. Clapp, J. Kellam, M. Warren, C. Minear, G. Cosden, R. Torres, Mr. Watson, Sponsor.



up the ladder... ①



pass me the light... ②



Oops!! Well, there goes another light. ③

Behind all the scenery you'll always find a member of the Stage Crew. No matter if they're perfecting sound and lights, preparing scenery, or making last minute adjustments, they always find time to smile. The boys work hard to prepare the stage for plays, guest speakers, and entertainers.

STAGE CREW

DISTRIBUTIVE EDUCATION



1ST ROW: K. Reichelt, P. Will, L. Kling, R. Meadows, D. Oeller, R. Pendry, B. Palmer, L. Olliver. 2nd ROW: M. Noble, W. Melvin, G. Stevens, E. Padilla, B. DePue, P. Tolson, S. Scott, G. Harris, D. Swain, T. Summers. 3rd ROW: J. Schurter, K. Wandall, M. Cassidy, P. Graf, C. Nechay, D. Graham, V. Collins, B. Mack, B. Alexandrr, H. Brooks. 4th ROW: G. Killen, T. Morris, B. Keck, R. Prah, S. Anthony, W. McDougall, S. Urey, S. Reicker, M. Codeiro, L. Willard, G. Glanden. 5th ROW: Mr. Lewis, Sponsor, S. Talley, T. McKewen, M. McHugh, H. Dulin, G. Melvin, D. Wilson, P. Vitanza, E. Helker, J. Albright, H. Fitrer. 6th ROW: J. Judd, C. Marr, F. Knight, T. Hamman, S. Pankoff, J. Morris, S. Tumbleson, R. Voshell.

R. Johnson, D. Swain, Mr. Lewis, S. Urey, L. Olliver, E. Helker, B. Palmer, H. Dulin, T. Hamman, D. Wilson.



Tomorrow's businessmen are being molded today in the Distributive Education Class. Students are provided with a background in marketing, merchandising, and management. This program should add to advanced studies on the college and business college level.

FUTURE TEACHERS OF AMERICA



The field of teaching is open to students planning a teaching career. In order to grasp knowledge about teaching the FTA sponsors a trip to the University of Delaware. It also permits students to student teach within their school, and present a tea in conjunction with the AFS.



S. Kirk, Treas.; F. Marshall, Sen.; E. Arndt, Pres.; C. Donovan, Sen.; Miss Akers, Sponsor; C. Kaczka, Sec.



1st ROW: P. Halfin, F. Marshall, J. Tucker, L. Melvin, T. Mitchell, A. Wallison, T. Mitchell, C. Kaczka, 2nd ROW: K. Shinn, R. Sapp, K. Godman, L. White, K. Hickey, D. Skalberg, K. Townsend, D. Maggert, K. Hosterman, 3rd ROW: D. Gravell, S. Kirk, L. Jessop, K. Wandell, F. Bergold, B. Gamberg, S. Wagner, L. Tripp, 4th ROW: P. Kramedeas, P. Harrison, H. Wyatt, S. Merideth, J. Pakrer, N. Utley, J. Bartsch, J. Bartsch, M. Olliver, G. Hoffstadt, 5th ROW: J. Lewis, D. Wharff, L. Goodman, B. French, E. Jones, J. Englehart, A. Pruet, C. Crawford, B. Patterson, E. Arnst, 6th ROW: D. Piercey, C. Harmon, P. Marsteller, H. Pruski, R. La France, D. Redic, P. McDaniel, B. Short, C. Donovan, J. Truitt, 7th ROW: K. Chadwick, L. Connor, J. Toss, L. Brachtston, D. Gravatt, S. Dudley, R. Sapp, D. Grier, G. Justice.

GIRLS' ATHLETIC ASSOCIATION

This select group of girls keep busy all through the year. They sponsor a gym night, the School Spirit Award, and decoration of the goal posts for home football games. Each member participates in some type of sport and therefore promotes girl's athletics and school spirits.



OFFICERS: L. Postlewaite, V.Pres.; L. Kling, Pres.; M. Maloy, Sec.; Miss Ries, Sponsor; S. Cool, Treas.

FIRST ROW: G. Danneman, B. Appenzeller, J. Fritz, M. Maloy, L. Postlewaite, S. Ayrault, L. Kling. SECOND ROW: S. Cool, V. Hutchins, F. Rigby, P. Mitchell, S. Ware. THIRD ROW: B. Gamberg, N. Littleton, Miss Ries; Sponsor.





FIRST ROW: Mr. Buckley, J. Judd, C. Whitehurst, W. Minor, B. Spence, B. Madden, H. Rigby, T. Dantonio, G. Melvin, J. Jenkins, D. Rhames, SECOND ROW: F. Knight, D. Mitten, S. Dill, E. Kaczka, J. Soltis, R. Sharpe, D. Hill, R. Rigby, D. Minus, T. Starke, THIRD ROW: G. Wofford, B. Metheney, L. Little, D. Knight, S. Wood, R. Nickerson, D. Shinn, G. Parker, W. Fields, FOURTH ROW: B. Austin, J. Waldbusser, E. Palmer, R. Landing, D. Wilson, E. Helker, M. Rash, A. Thomas, P. Maddox.



OFFICERS: B. Madden, V. Pres.; H. Rigby, Pres.; B. Spence, Sec. and Treas.; Mr. Buckley, Sponsor.

LETTERMEN'S CLUB

Muscular masculinity best describes the sophisticated young lettermen. Membership is achieved by sports participation and the proven ability to obtain a school letter. Their highlight of the year was the basketball game between the faculty and lettermen.

FUTURE FARMERS OF AMERICA

Expert leadership in agriculture is obtained in the FFA. Members participate in a state judging contest, a parent-son banquet, and leadership training conferences. Several students are usually given an opportunity to visit the National Judging Contest in Kansas City.



OFFICERS: Mr. Short, Sponsor; T. Remus; J. Harrison; D. Russum; B. Madden; D. Webb; A. Thomas; E. Tarburton, Pres.

1st ROW: E. Tarburton, A. Thomas, Dave Webb, R. Pahl, J. Harrison, Mr. Horace Short. 2nd ROW: H. Brooks, D. Melvin, F. Longfellow, B. Pajeroski, G. Killen, P. Dill, J. Schurter, D. Russum. 3rd ROW: J. Webb, T. Kaczka, T. Remus, B. Madden, H. Rigby, G. Madden, G. Rhinehart, B. Thompson. 4th ROW: J. Roe, R. Wilson, R. Burke, J. Tazalaar, W. Rash, D. Browne, R. Remus, W. McDougall, T. Cobb.





OFFICERS: R. English, Pres.; N. Taylor, V. Pres.; Miss Bradway, Sponsor;
C. Bordley, Sec.; H. Cravens, Treas.

DRAMA CLUB

Drama began hundreds of years ago and lives today through Miss Pat Bradway. This club enables students to learn more about the theater by allowing to visit stage plays in neighboring cities. Their transportation is paid by the profit from their annual bake sale.



1st ROW: D. Gravett, L. Cataldi, K. Townsend, L. Graham, A. Wollison, J. Toss, P. Alexander, R. Sapp, G. King, M. Kolonia, 2nd ROW: D. Skalberg, M. Appenzellar, L. Tripp, D. Spady, M. McGee, L. Hoster, D. Wharff, F. Marshall, P. Krameeas, M. Maloney, J. Lewis, 3rd ROW: R. Redman, J. Tazelar, M. Heesh, T. Coussea, B. Gamberg, J. Pruett, C. Pindzola, B. Alexander, L. Taylor, C. Sweeny, C. Bordley, A. Bernie, K. Hoster, 4th ROW: C. Harmon, A. Wright, M. La France, N. Taylor, D. Swain, C. Tribbett, V. Rash, D. Maggart, D. Moore, B. Bandergrift, L. Conner, K. Chadwick, D. Mitten, 5th ROW: J. Fogwell, R. McHugh, K. Green, W. Patterson, T. Caldwell, D. Johnson, D. Sells, T. McKuen, J. Morris, M. Hickey, 6th ROW: P. Harrison, J. Hickman, C. Rolon, R. Curley, R. Clouse, J. Cooper, B. Miller, J. Fritz, L. Leyshon, J. Bensinger, C. Crawford, N. Bennett, N. Abrahams, 7th ROW: K. Hickey, L. Braekston, M. Neal, S. Kirk, A. Thompson, A. Villarroel, R. Rolon, G. Reynolds, K. West, M. Shaffear, C. Luff, C. Andrews, D. Bloom, N. Hall, T. Matthews, G. Corder, T. Mitchell, C. Campbell.



LATIN CLUB

Roman culture lives at CR through the Latin Club. Each year the Latin Club members have a busy schedule to fulfill. It consists of money making projects, sponsoring Roman Day and the Roman Banquet. It's also affiliated with the Delaware and National Junior Classical Leagues.



OFFICERS: R. Roscoe, Sgt. at Arms; D. Alders, Sec.; J. Lobaccaro, Pres.; U. Thomas, Treas.; P. Burke, member at large.

FIRST ROW: K. Hosterman, J. Brown, J. DePue, U. Thomas, D. Faircloth, K. Goodman, P. Halfin, A. Stebilo, A. Marvin, M. Gibbons, L. Jones, T. Shahan, SECOND ROW: H. Pruski, C. Lane, D. Nelson, D. Bilow, J. Bartsch, L. Tripp, D. Alders, S. Stanley, P. Kishmedeas, Mrs. Mohle, L. Prescott, A. Thompson, THIRD ROW: B. Eberly, B. Patterson, M. Peterson, D. Philips, R. Roscoe, S. Cool, J. Lomax, B. Kobb, P. Graziosi, D. Sells, P. Burke, M. Figary, FOURTH ROW: R. Hayes, P. Puyleun, B. Hartly, J. Wild, A. Pruett, T. Figary, V. Valeski, D. Failins, B. Fields, P. Collins, B. Pajerowski, FIFTH ROW: M. Celly, T. Wagner, D. Hosterman, S. Wothers, B. Donovan, J. Collier, D. Wyman, J. Ryan, K. Sellers, H. Webb, D. Focht.





1st ROW: P. Hutchins, S. Lorenz, P. Burke, R. Neese, P. Harrison, J. Clarke, C. Metcalf, D. Aalders. 2nd ROW: C. Lissy, B. Eberly, D. Elliot, D. Carter, C. Drigus, P. Alexander, P. Floyd, M. Neil, D. Hicks. 3rd ROW: K. Andreves, D. Bloom, N. Shrum, N. Anthony, P. Kraemadis, D. Grier, K. Green, D. Gravett, L. Brackslau. 4th ROW: G. Kelley, C. Sawyer, M. Maloy, A. David, B. Harmic, M. Harris, J. Fritz, L. Leyshon, D. Gooden, S. Dudley. 5th ROW: T. Scott, S. Wood, N. Lins, D. Wood, J. Brown, J. DePue, A. Saulsbury, M. Pena, G. Justice, N. Hicks. 6th ROW: J. Rolstal, K. Townsend, R. McHugh, J. Hickman, C. Rolon, D. Hackston, R. LaFrance, E. Horne, S. Kittleson, D. Kowinsky. 7th ROW: D. Swain, C. Tribbit, D. Moore, D. Maggart, B. Shinn, G. Donnelly, M. Arthur, E. Mayan, P. Gonzales, C. Nechay, S. Ware. 8th ROW: N. Haas, B. Dantonio, D. Smith, C. Lane, D. Selle, B. Bolden, C. Horton, C. Wallace, I. Haley.

OFFICERS: T. Scott, Treas.; M. Harris, Sec.; B. Harmic, Pres.; Mrs. Shoemaker, Sponsor; A. David, V.Pres.



FUTURE NURSES OF AMERICA

Under the expert leadership of Mrs. Olive Shoemaker, girls are introduced to several aspects of nursing. In doing so, the girls work as candy strippers at the local hospital or observe the school nurse at work. Annually trips are sponsored to nearby schools of nursing, as well as, homes for the ill. Their scholarship fund is obtained by their Christmas bake sale, where they also give gifts to Stockly Hospital for the retarded.

AMERICAN FIELD SERVICE

In order to make the world a better place in which to live, the AFS tries to close the communication gap between countries. High schools all over the U.S., like ours, tries to achieve this by exchanging American students for foreign students. This student is able to share American life with their friends when they return home. Each year the club sponsors AFS Day, when exchange students from local schools visit CR to learn more about the American high school student.



OFFICERS: Terry Cousseau, B. Appenzeller, Pres.; N. Freeman, Sec.; Mrs. Layton, Advisor.



SENIORS: 1st ROW: T. Cousseau, M. Heesh, J. Pruett, F. Morris, G. Corder, D. Mitten, J. Morris. 2nd ROW: R. Cluse, R. Curley, C. Tribbet, R. Rolan, A. Thompson, A. Villarroel, K. West, J. Fritz. 3rd ROW: C. Pindzola, D. Swain, J. Cooper, B. Miller, L. Leyshon, M. Hickey, T. McKewen, B. Alexander.





FIRST ROW: Mrs. Layton, B. Appenzeller, T. Cousseau, N. Freeman, C. Kaczka, V. Weeks. SECOND ROW: D. Skalberg, R. Caballero, C. Rolan, J. Hickman, A. Petty, N. Anthony, N. Shrum, M. Appenzeller, C. Hickey. THIRD ROW: J. Fritz, L. Cataldi, K. Townsend, R. Culey, B. Hamrick, L. Leyshon, R. Clouse, M. Van Sant. FOURTH ROW: D. Moore, D. Mitten, M. Hickey, G. Corder, J. Morris, H. Bennett, D. Miller, J. Cooper, C. Bordley, B. Mack. FIFTH ROW: A. Parker, J. Pruett, C. Luff, G. Curl, J. Minnick, P. Harrison. SIXTH ROW: S. Kirk, J. Bensinger, S. Wagner, F. Morris.



MATH CLUB

Also known as the Mu Alpha Theta, members try to encourage mathematical interests. As the formal title signifies, this is a M.A.T.H. club, which avails itself to students with mathematical problems. Pleasure is obtained by sponsoring a dance, a math test, and a picnic. Members are also given the opportunity to attend the Regional Conference.



OFFICERS: Mrs. Lowe, Sponsor; M. Maloy, Pres.; R. Gamberg, V.Pres.; B. Clapp, Sec.-Treas.



1st ROW: S. Wagner, C. de Bloois, K. West, A. Mancuso, B. Clapp, C. Mathews, R. Curley, M. de Bloois, D. Faircloth. 2nd ROW: G. Dannemann, Mrs. Lowe, B. Shelton, R. Gamberg, D. Rahmes, C. Whitehurst, B. Metheny, M. Northcott, M. Maloy.





Mrs. Ryan, Sponsor; M. de Bloois, Pres.; D. McCoy, V.Pres.; A. Mancuso, Sec.; R. Curley, Treas.; K. Boyette and C. Goldberg, Junior Representatives.



KNEELING: N. Freeman, D. McCoy, M. de Bloois, R. Curley, K. Hutchins, D. Faircloth. SEATED: S. Wagner, B. Shinn, C. De Bloois, A. Mancuso, P. Meredith, P. Graziosi, C. Harmon. STANDING: S. Kirk, K. Boyette, L. Tripp, K. West, V. McWilliams, N. Webb, C. Golden, S. Ayrault, C. Goldberg, S. Moore, R. Gamberg, B. Shelton, B. Metheny, D. Rahmes, C. Whitehurst, D. Emswiler, M. Maloy.



NATIONAL HONOR SOCIETY

Education is the basis for leadership. Leadership evolves from people with a good personality and a will for leading. All of which are represented by the members of the National Honor Society. These students who use their ability to maintain a 90.0 or better average for five semesters are asked into the Society to render their services to others and promote their qualities, as well as, the scholarship program. The club sponsors tutoring services, an Alumni Tea, and a dance.

SPANISH CLUB



OFFICERS: R. Gamberg, Pres.; H. Cravens, V.Pres.; B. Bordley, Sec.; M. Hickey, Treas.; Mrs. Abraham, Sponsor.



1st ROW: D. Patterson, S. Baker, C. Oestrich, J. Moore, C. Rolan, R. English, J. Clarke. **2nd ROW:** R. Neese, S. Kirk, C. Kazcka, D. Skalberg, L. Postlewaite, L. Leyshon, P. Harrison, S. Shaeffer, G. Reynolds, D. Bloom, C. Andrews, B. Shinn, G. Donnelly, B. Gamberg. **3rd ROW:** L. Cataldi, C. Bordley, B. Miller, K. Townsend, D. Maggart, D. Moore, J. Fritz, K. Hickey, B. Bordley, H. Cravens, M. Hickey, A. Mancuso, N. Linns, J. Englehart, P. Marsteller, G. Angstadt, D. Kowinski, J. Pfannebecker, T. Tieman, H. Lawrence. **4th ROW:** J. Harrison, S. Brodeur, G. Ford, C. Marr, R. Gamberg, J. Harris, K. Sterling, F. Marshall, J. Teaff, E. Kazcka, G. Corder, T. Lewis, D. Emswiler, J. Nichols, D. Nechay, D. Brown, Mrs. Abraham, C. Morris, B. Shelton, C. Harmon. **5th ROW:** R. Clabello, B. Tieman, J. Bather, R. Rucker, D. Woodall, H. Bennett, C. Whitehurst, D. Shinn, D. Mitten.

Each year Panamanian exchange students visit CR through the Spanish Club. Although these students know their language, others encounter difficulties in Spanish. Under Mrs. Joan Abraham's supervision the club is not only able to tutor fellow students, but also to provide the students with a taste of Spanish culture.



Estudiantes.



FUTURE SECRETARIES ASSOCIATION

Sponsored by the National Secretaries Association, girls having 6 years experience in businesses around Dover, may become members of the Future Secretaries Association. The F.S.A. was formed by eliminating the Office Workers Club and recruiting more members with different goals in mind. Regular visits are made to local businesses, where they learn how to apply for a job.

SEATED: M. Banks, Pres.; S. Aynault, Sec.; S. Downes, Treas. STANDING: Mrs. Brackett, Mrs. Joseph, Sponsors; S. Comegys, V.Pres.



1st ROW: S. Comegys, S. Aynault, J. Lucks, B. Palmer, C. Stone, S. Lewis. 2nd ROW: M. Banks, C. Klien, W. Ford, C. Bradley, M. Thomas, C. Stone, S. Miller, K. Kirwen, S. Smith. 3rd ROW: S. Downes, J. Jenkins, R. Darling, S. Kittleson, K. Marr, M. Rudisill, A. Saulsbury, G. Justice, N. Hicks.

SCIENCE CLUB

Though we live in a man-made world, nature is still sought by the Omega Alpha Sci. In addition to field trips, the club also travels to nearby scientific institutions. Every day they endeavor to interest students in the scientific world about them.



OFFICERS: J. Wild, V.Pres.; L. Goodman, Treas.; D. Faircloth, Pres.; D. Walton, Sec.

1st ROW: B. Kersey, K. Townsend, D. Nelson, N. Bennet, S. Ford. 2nd ROW: C. Crawford, L. Goodman, C. Harmon, B. Short, S. Wagner, J. Wofford, D. Goodman, C. de Bloois, C. Phelps, D. Faircloth. 3rd ROW: D. Shinn, D. Walton, Mrs. Saultern, Mr. Evans, S. Moore, D. Emswiler, G. Walker, E. Arndt, D. Wyman, J. Fillmore, S. Wothers, G. Carney, Mr. Crouch, J. Roscoe, H. Seamans, Mr. Williams.





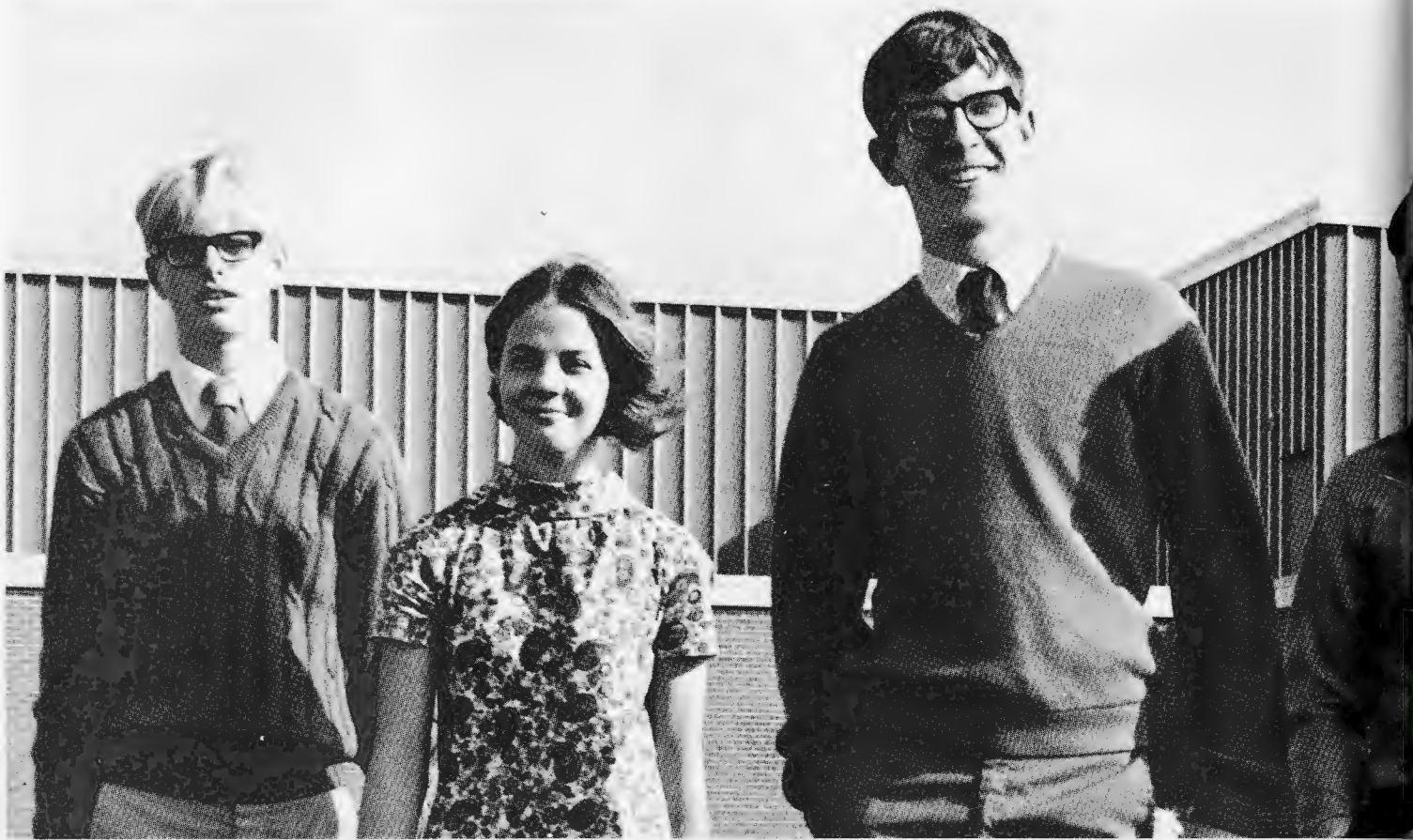
OFFICERS: G. Danneman, Pres.; D. McCoy, V. Pres.; C. de Bloois, Sec.; Mrs. Wiedman, Advisor.

ENTRE NOUS

To spread French culture and enable students to speak the language are the origins of the French Club. Since that time, they have grown to spread their knowledge by giving teas, sponsoring French Day, and offering a tutoring service. In an attempt to make the students feel comfortable when speaking the language, all meetings are conducted in French.

1st ROW: M. VanSant, B. Clapp, R. Curley, M. Maloy, M. Arthur, M. Shaeffer. **2nd ROW:** B. Haas, N. Bennett, D. Gravett, C. Pindzola, J. Pruett, G. Danneman, R. Gaidis, B. French. **3rd ROW:** M. Heesh, M. Wild, J. Bensinger, C. Crawford, B. Shinn, L. Goodman, D. McCoy, S. Wagner, C. Yancho, C. de Bloois, C. Matthews, M. de Bloois, T. Cousseau, J. Cooper. **4th ROW:** Mrs. Wiedman, H. Wyatt, E. Arndt, H. Coppage, E. Hammon, T. Matthews, M. Northcott, K. Boyette.





OFFICERS: Bill Tieman, Treas.; Cathy de Bloois, Sec.; Don Rahmes, Pres.; Keith Boyette, V.Pres.



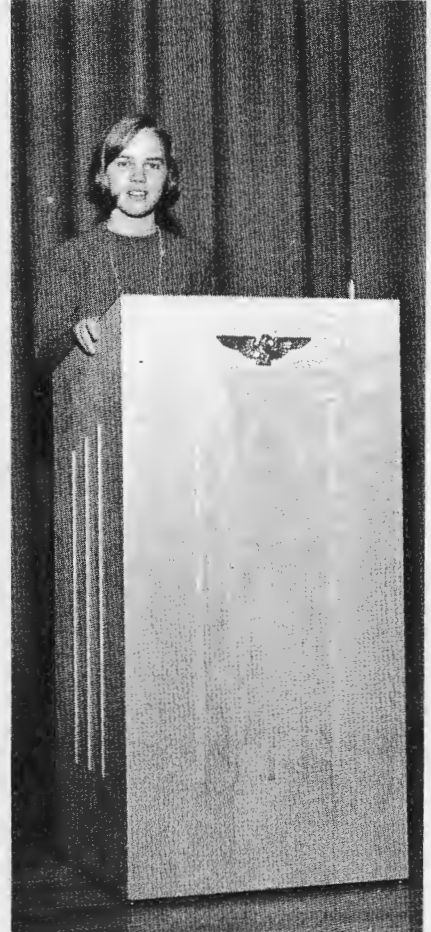
MEMBERS: LEFT—R. Landing; M. de Bloois; M. Maloy; P. Hutchins; D. McCoy; A. Mancuso; B. Clapp; Mr. Grace; B. Tieman; D. Rahmes; B. Appenzeller; C. Massey; K. Glanden; D. Niezer; R. McHugh; J. Fogwell; K. Boyette; C. de Bloois; W. Field; B. Metheny; M. Appenzeller; V. Spence; K. Hickey; L. Cataldi.

STUDENT COUNCIL

As the primary organization at CRHS, the Student Council is active in every facet of the school. Under the supervision of Mr. Eugene Grace and Council president, Don Rahmes, the Council has been in many diverse activities including: Club Day, a candy sale, the All-School Banquet, and new banners for the gymnasium.



The Winner.



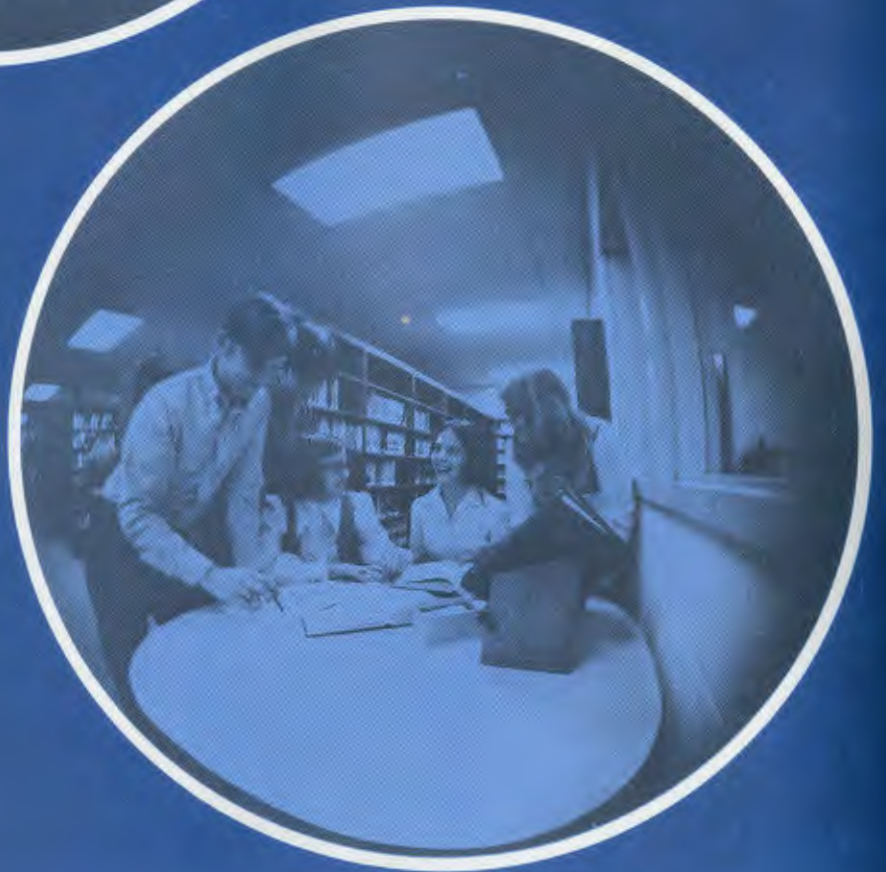
His Runner-up.



Golden; S. Cool; E. Phillips; M. Rash; C.



For whom shall we vote.



Page 84

GO

MOVE

RUN

KICK

YELL



Page 16



Page 118

FIGHT

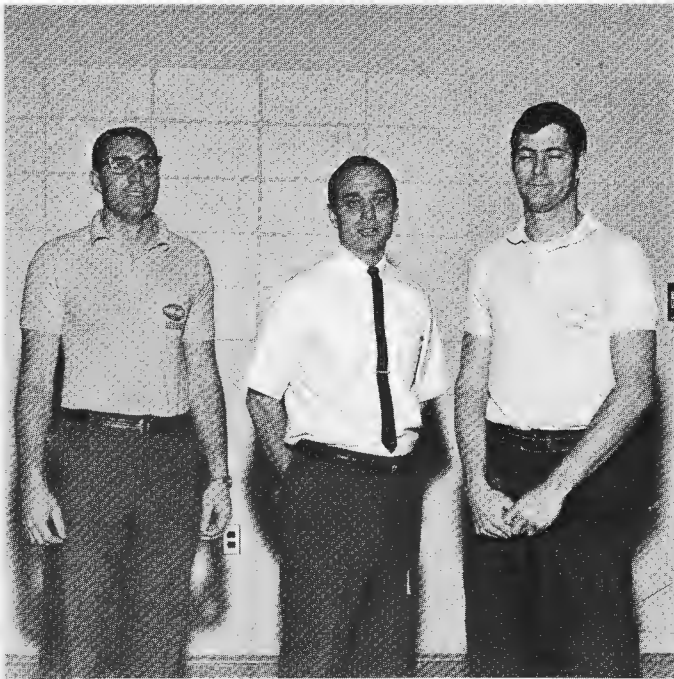
MATCH

SCORE

TIRE

WIN

VARSITY FOOTBALL



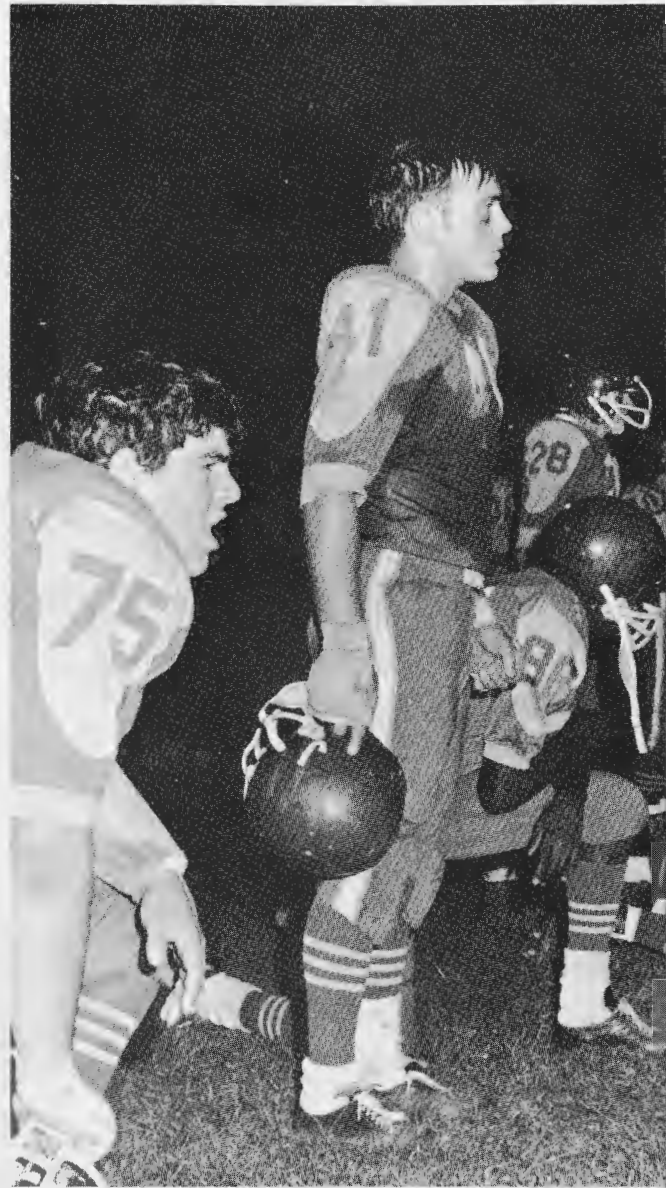
Coaches: Mr. Powell, Mr. Ward, and Mr. Caine



Managers: Mike Jellife, Jiggs Failing, and Gary King



1st ROW . . . E. Palmer, R. Acosta, D. McGinnis, J. Opperman, P. Vitanza, G. Corder, B. McCullough, M. Fennemore, M. Baker, Mr. Caine. 2nd ROW . . . S. Pankoff, A. Fortson, H. Broohs, D. Minus, David Hill, J. Soltis, B. Spence, E. Kaczdkas, B. Metheny, B. Madden, B. Hungerford, D. Hill, J. Soltis, S. Tutthill. 3rd ROW . . . M. Jellife, G. King, J. Failing, D. Knight, L. Scott, B. Jardine, D. Rahmes, T. Starke, J. Montgomery, W. Fields, J. Kenny, J. Thompson, D. Kucek, G. Carney, D. Baker, R. Landing, Mr. Powell, Mr. Ward. 4th ROW . . . T. Spence, R. Strickland, B. Cornell, C. Whitehurst, S. Townsend, J. Harrison, F. Knight, H. Rigby, M. Rash, G. Wofford, E. Jelker, D. Bordley, M. Shahan.



	C.R.
Annapolis	26 12
Middletown	58 6
Milford	26 2
Sussex Central	6 14
Lake Forest	8 20
Woodbridge	8 22
Seaford	6 14
Cape Henlopen	33 16
Laurel	6 12
Dover	20 8

Kill 'em Riders





Give the kid a break



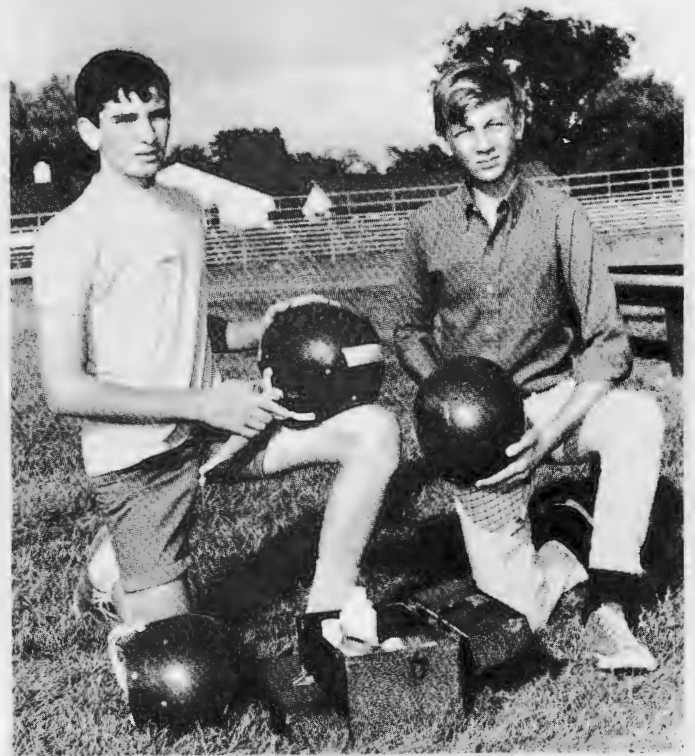
JUNIOR VARSITY FOOTBALL



1st ROW: A. Naumen, S. Hughes, C. Webb, R. Roscoe, J. Lemmons, K. Cool, M. Lloyd, E. Swain, T. Harmon, M. Kelly. 2nd ROW: D. Maggart, J. Webb, S. Beasley, J. Tazelaar, J. Deakins, F. Hallock, J. Bahder, M. Moran, B. Hartley, B. Fields, R. Hayes. 3rd ROW: C. McCully, M. Jester, C. Lewis, T. Lewis, G. Cortney, J. Clarke, D. Duffy, K. Stefanoski, C. Herne, M. Adams, L. Roe, J. Graham, Coaches: Mr. Hill, Mr. Dean, Mr. Magrone.

KNEELING: K. Stefanoski, F. Hallock, T. Lewis, Mr. Hill. STANDING: Mr. Dean, J. Lemmons, R. Roscoe.

Managers: A. Nauman, M. Kelly.



CROSS COUNTRY



KNEELING: B. Austin, M. Wooters, S. Wooters, B. Walsh. SEATED: G. Madden, R. Schepens, S. Shinn, E. Stone, R. Jordan, L. Jackson, Manager. STANDING: Mr. Caldwell, P. Koconia, P. Apostalina, S. Wood, S. Ereka, J. Rowe, J. Waldbusser, D. Brown.



Capt., S. Wood; Coach, Mr. Caldwell; Manager, L. Jackson.



VARSITY HOCKEY



L. Postlewaite, Co. Capt.; Miss Holland, Coach; A. David, Co. Capt.



L. Kling, All-Star Goalie



1st ROW: L. Olliver, B. Patterson, S. Little, D. Gooden, S. Cool, K. Hutchins, S. Truett, P. Fields. 2nd ROW: B. Darling, C. Stone, L. Postlewaite, R. Failing, G. Kelly, M. Maloy, A. David, S. Ayrault, L. Kling, Miss Holland.



1st ROW . . . K. Shinn, C. Kaczka, B. Eberly, T. Richardson, L. Unruh, P. Wolfe, B. Vandegrift, F. Rigby, L. Grant. 2nd ROW . . . H. Pruski, K. De Marie, J. Truitt, T. Mitchell, E. Ryan, W. Patterson, M. Kolonia, J. Wofford, N. Waldbusser. 3rd ROW . . . P. Mitchell, B. Oantonio, S. Early, D. Riley, D. Failing, L. Graham, S. Stewart, T. Shahan, T. Torres, Miss Ries.

VARSITY BASKETBALL



STANDING: Manager, S. Ware, L. Scranton, D. Gooden, B. Gamberg, F. Bergold, L. Kling, G. Reh, N. Littleton, Coach; Miss Ries. KNEELING: V. Hutchins, S. Cool, P. Mitchell, F. Rigby.

JUNIOR VARSITY BASKETBALL



1st ROW . . . D. Grier, K. Metcalf, B. Haxton, D. Kowinski, L. Unruh, B. FibelKorn. 2nd ROW . . . C. Phelps, M. Appenzeller, K. Hickey, K. Shinn, B. Eberly, B. Patterson, Z. Keneski. 3rd ROW . . . B. Bolden, S. Caldwell, L. Graham, D. Hicks, T. Caldwell, V. Brown, D. Johnson, J. English.

Varsity Coach, Miss Ries; Co-Captains, S. Cool, P. Mitchell.

J.V. Coach, Miss Holland; Co-Captains, V. Brown, K. Metcalf.



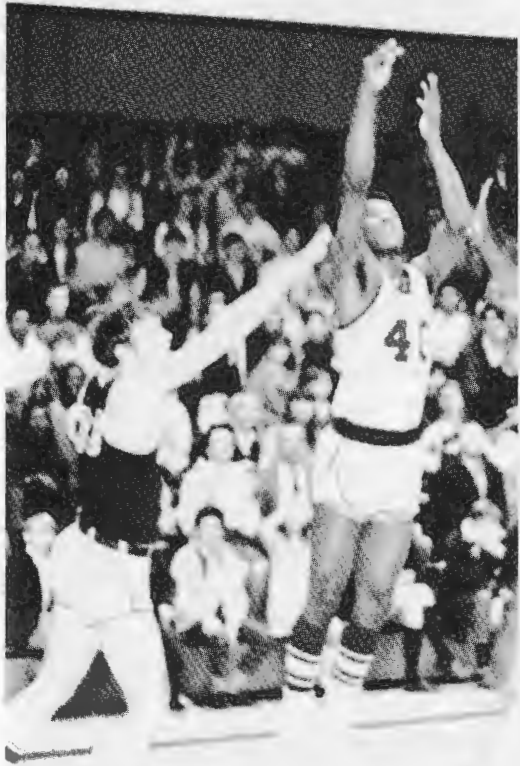
VARSITY BASKETBALL



Captains D. Bordley; C. Whitehurst; Coach, Mr. Hill.



KNEELING: M. Wright, J. Kenny, H. Dickerson, J. Thompson. STANDING: C. Shockley, Manager D. Bordley, C. Whitehurst, D. Rahmes, R. Sharp, L. Scott, W. Fields, Mr. Hill, Coach.



J.V. BASKETBALL



KNEELING; Mr. Geppart, Coach, R. Huggins, B. Jardine, T. Harmon. STANDING; R. Fox, W. Buckworth.

KNEELING; D. Maggart, W. Buckworth, T. Williams, STANDING; Mr. Geppart, B. Jardine, R. Fox, R. Huggins, S. Gedney, C. Donnelly, T. Harmon, B. Hartley, Manager.



1st ROW: Mr. Quirk, R. Alexander, R. Wilson, L. Shepherd, R. Corder, J. Thaxton, B. McGaughy, J. McNatt, T. Deputy, H. Seamans, M. Kelly, D. Hunn, S. Hattie, T. Malie, R. Shockley, K. Minner, H. Warren, S. Birch.

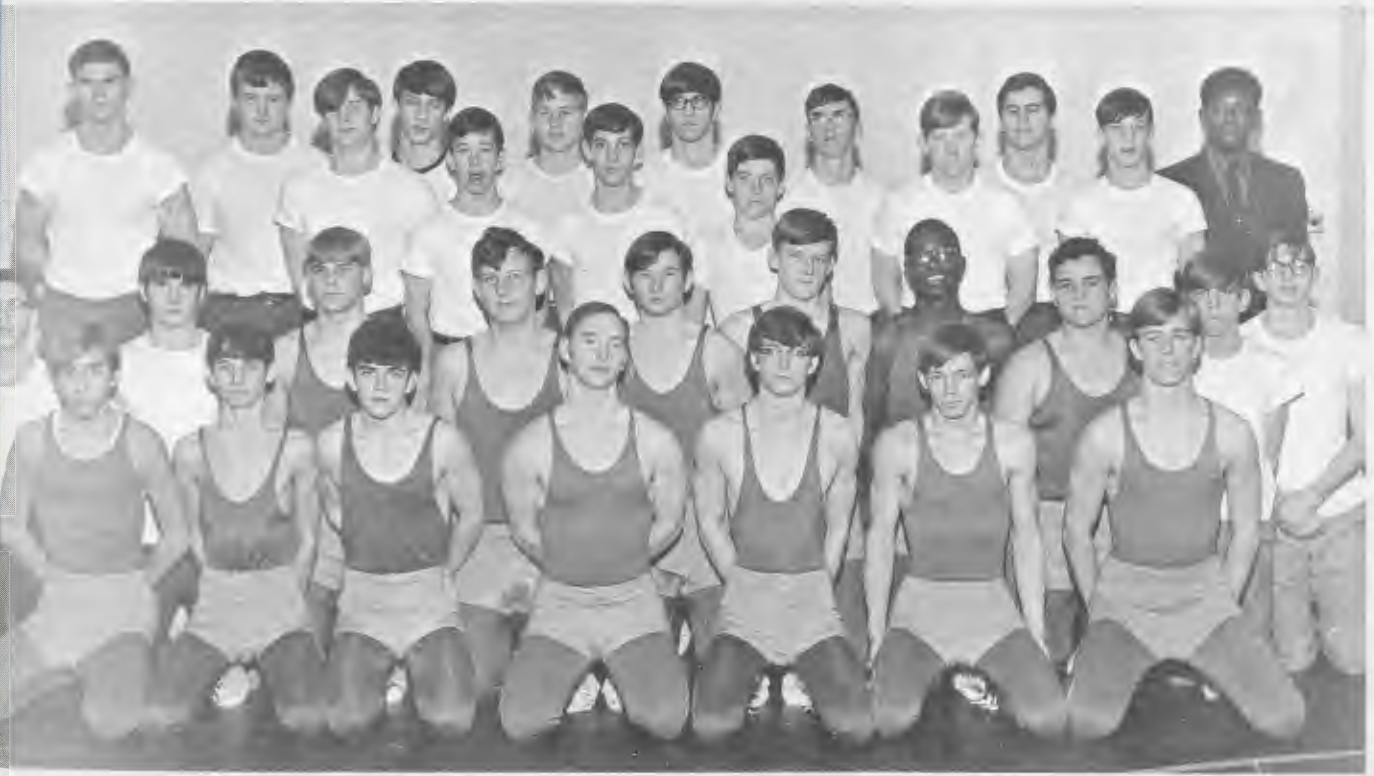
NINTH GRADE BASKETBALL



J.V. WRESTLING



Captains: R. Roscoe, D. Gourley, D. Swetland. Coach: Mr. Buckworth.



1st ROW: J. Rhoades, S. Wothers, N. French, D. Gourley, D. Swetland, G. Madden, R. Roscoe, 2nd ROW: M. Howard, E. Kunkle, C. Webb, D. Painter, A. Burke, G. Knight, K. Brown, G. Ward, R. Schpens, D. Focht, 3rd ROW: R. Acres, M. Withrow, J. Ryan, D. Hunn, S. Bucher, K. Sellars, 4th ROW: J. Roe, J. Leen, M. Warren, T. Lewis, T. Baughman, G. Parks, S. Broder, J. Russ, Manager.



VARSITY WRESTLING



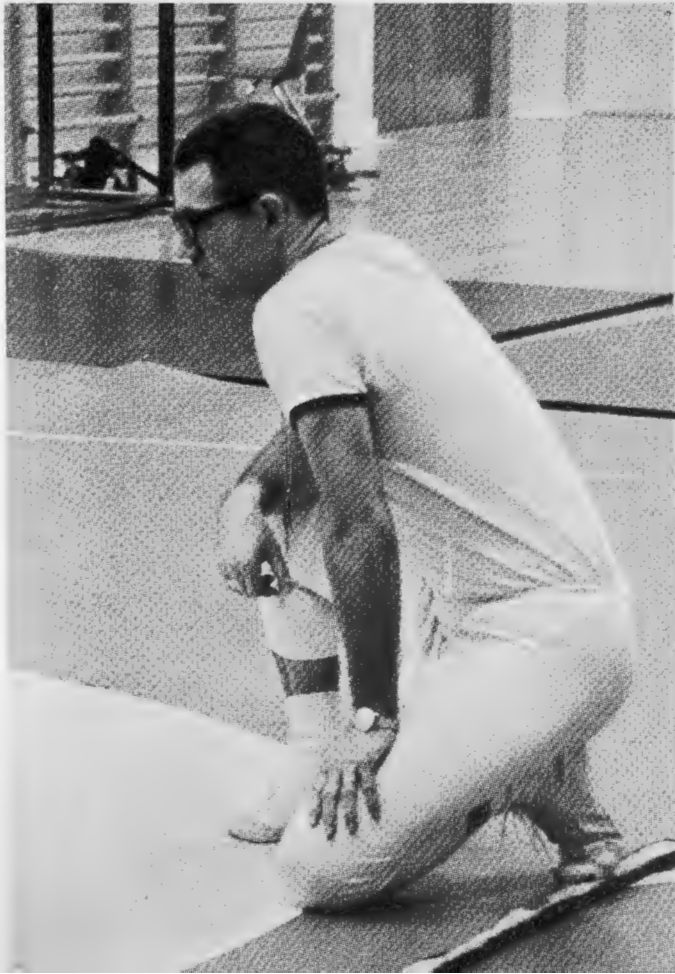
Now you've got him.

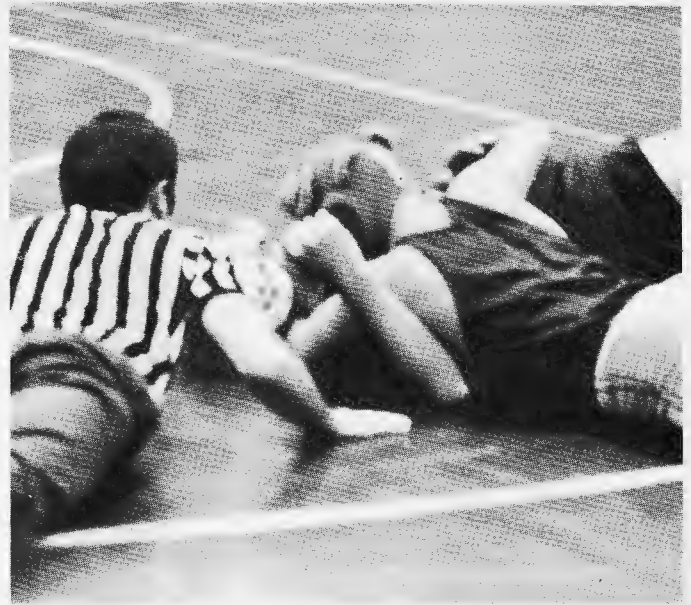


KNEELING: D. Webb, C. Lewis, P. Maddox, M. Jester, T. Steckelberg, W. Minor, **STANDING:** Mr. Wilt, T. Spence, M. Jelliffe, B. Marstellar, B. Madden, H. Rigby, S. Wood, G. Carney, J. Harrison, J. Russ, Manager.



Mr. Wilt, Coach; H. Rigby, B. Madden, W. Minor; Captains.





TRACK TEAM



Gene Dill



Coach Mr. Caldwell, J. Waldbusser



Lester Scott



KNEELING: J. Waldbusser, J. Sells, A. Casson, L. Williams, D. Emswiler, E. Kunkle, S. Wothers, E. Dill, STANDING: J. Roe, L. Scott, P. Evans, S. Wood, G. Utley, G. Walker, C. Goldberg, Mr. Caldwell.

TENNIS



R. Gamberg, S. Boyd, J. Judd, T. O'Donnell, C. Marr, G. Corder.



1st ROW . . . M. Maloy, L. Postlethwaite, G. Dannemann, Coach; Miss Holland. 2nd ROW . . . B. Gamberg, U. Thomas, J. Pfannbecker, J. Malie.

C. Donovan, M. Jester, T. Lewis, W. Fields, D. Mitten, G. Wofford, R. Fox.

GOLF



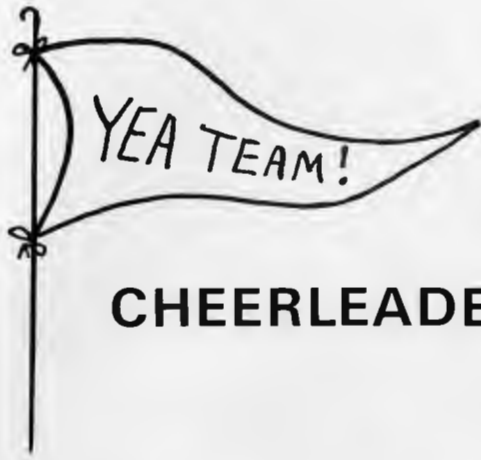
BASEBALL

R. Sharpe, H. Rigby, B. Hungerford, M. Jelliffe, G. Ward, L. Little, R. Acosta, D. Shinn, C. Whitehurst, R. Nickerson, Coaches, Mr. Magrone, Mr. Buckworth.



SOFTBALL

KNEELING: B. Appenzeller, S. Ayrault, L. Kling, L. Scranton, STANDING: K. Hutchins, Manager, B. A. Boulden, J. Daniels, B. Fibelkoen, F. Rigby, S. Ware, V. Hutchins, N. Littleton, B. Patterson, S. Cool.



CHEERLEADERS



Varsity Cheerleaders: B. Shinn, A. Mancuso, L. Conner, P. Brown, N. J. Anthony, B. Palmer, K. Luff, S. Perry





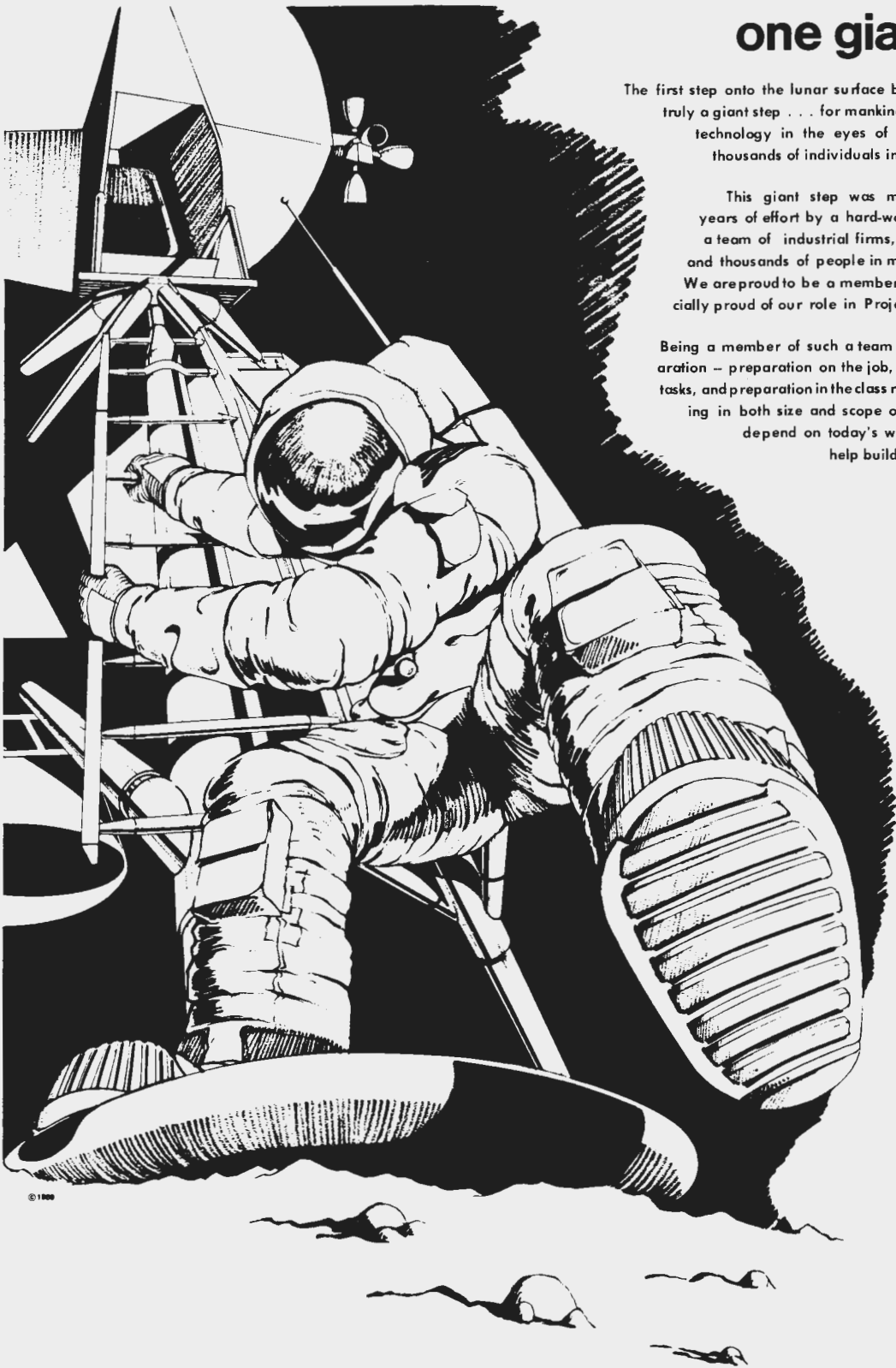
J.V. Cheerleaders: M. Olliver, D. DeVeau, B. Weeks, J. Wooford, N. Shrum, V. Weeks.



Now the varsity!!!

PHYSICAL EDUCATION





one giant step

The first step onto the lunar surface by Neil Armstrong was truly a giant step . . . for mankind . . . for our country's technology in the eyes of the world . . . and for thousands of individuals in our space industry.

This giant step was made possible through years of effort by a hard-working, dedicated team—a team of industrial firms, government agencies and thousands of people in many diverse disciplines. We are proud to be a member of this team and especially proud of our role in Project Apollo.

Being a member of such a team requires years of preparation — preparation on the job, preparation for specific tasks, and preparation in the classroom. Our team is growing in both size and scope of responsibility and we depend on today's well prepared student to help build our team of tomorrow.

ILC INDUSTRIES, INC. 350 PEAR STREET, DOVER, DELAWARE 19901



KEMP'S GROCERY STORE

Willow Grove

697-6827

CONGRATULATIONS

S & S MOTORS

Mark III

Montego

Lincoln Continental

734-7505

S. Governor's Ave. (at Hope St.)

GENERAL FOODS CORP.

A PROUD MEMBER OF THE



**B & B
EDUCATIONAL MUSIC SERVICE**

200 Lookerman St. Dover, Del.

Robert M. Bennett
Frederic W. Brown
Harry M. Voshell
734-2502



HESS

THE BEST

Wilkinson Hess Station

Phone

TO THE CLASS OF "70"

JELLO – DOVER

DELAWARE COMMUNITY



SERVICE

FOR LESS

423 Dual Highway

674-9820



COMPLIMENTS

of

FIRST NATIONAL BANK OF WYOMING

Your Community Bank

697-3241

120 Camden-Wyoming Ave.
Wyoming, Delaware

Miss Patricia Bradway
H. E. Warrington
Denny Williams
John & Naomi Townsend
Miss Kopinke
Luv, Dave "72"
The Hoeflich Family

Compliments of
J. G. SMITH AUTOS, INC.

Volkswagen

Downtown Dover

News

Sports

1410
AM

WDOV

94.7
FM

Music

Weather

Starfire Diamonds
Exclusive Dealer

Expert Watch And
Jewelry Repairing

KENT JEWELERS
114 Loockerman St.
Downtown Dover, Del.

James Sudler
Manager

Telephone 734-9313

LAVERE'S T.V.

Camden, Delaware

Zenith & Admiral

Sales & Service

697-6457

PUGH'S ATLANTIC

758 North DuPont Highway

Dover, Delaware

Phone: 734-4231

Mr. & Mrs. James Bell and Family
Elton's Florists & Gifts
Shellie Bell
Mr. & Mrs. Howard Seward and Family
Debe O'Donnell
Dover Country Day School
Mr. & Mrs. Joseph Yadacus





Mrs. Raymond P. Carson
 Mrs. Marilyn Gorden
 Mr. & Mrs. W. R. Kane
 Mr. & Mrs. Paul Knight
 Mr. & Mrs. Charles Gleadow
 Miss P. Warren
 Dr. & Mrs. Marvin R. Berman
 Brad, Doug & Freddie

C. F. SCHWARTZ MOTOR COMPANY INC.

Chrysler — Plymouth — Imperial

International Trucks

Sales and Service

1076 N. State Street

Dover, Delaware

Compliments
 of
STARDUST BEAUTY SHOP

THE BROWN FOX

Cocktail Lounge

Rt. 113 Opposite Dover Air Force Base



DOVER RESTAURANT

821 S. Governors Ave.

Famous Home Cooking

6 a.m. to 8 a.m.

Compliments
 of
DOVER ANIMAL HOSPITAL

Mrs. Edwin Cameron
 Mr. and Mrs. Hans Steffens
 Mrs. Ruth Sanderson
 Elizabeth Lane
 Mr. and Mrs. Charles Birch
 Mr. and Mrs. Donald W. Knight
 Mr. and Mrs. Walter Prahl

JOS. LEVI AND CO.
111 LOOCKERMAN STREET
DOVER, DELAWARE
734-1484



COMPLIMENTS
OF
WESTVILLE 4-H CLUB



Phone: 674-9934

FREEMAN'S ATLANTIC

318 North DuPont Highway
Dover, Del. 19901

GOD BLESS

JIGGS FAILING



PIONEER HOMES

DUAL HWY.

CAMDEN, DELAWARE



Congratulations To The
Class of 1970



Brunswick

GOLD CROWN LANES

Rodney Village Shopping Center

Dover, Delaware

734-7501

HOWARD FURNITURE

U. S. By-pass Dover

736-1433



Compliments

of

THE LAUGHING GULL

Mr. and Mrs. William C.
Meredith, Jr. and Steven
Mrs. Elsie Chapman
Mary E. Hill
Mary Ellen Short
Cheryl Scranton
Mr. and Mrs. Robert J. Fisher
Harry and Ann
Mr. and Mrs. J. A. McWilliams Jr.

VILLAGE BARBER SHOP

Rodney Village Shopping Center

"We take pride in our work"

Hours: Tues.—Sat. 8 a.m.—6 p.m.

674-9691

J. E. BECK CO.

"Fine Furniture Since 1906"

Dover, Delaware 734-3591



VAN'S ELECTRICAL SERVICE

P.O. Box 392 – 772 S. Old Mill Road
Dover, Delaware 19901
Electrical Contractor

Bob Vandegrift

697-2888

**CANCEL
SHOE**

Famous Name Brand

Q. J. McCallister
Owner

HORNES GROCERY

U. S. 13 Woodside

**COMPLIMENTS
OF
A FRIEND**

DOVER ELECTRIC SUPPLY CO. INC.

DISTRIBUTOR FOR RESIDENTIAL

INDUSTRIAL – COMMERCIAL

SUPPLIES

PHONE 674-0115
1631 S. DuPont Hwy.

DOVER, DELAWARE

HARRY LOUIE'S LAUNDRY

and

DRY CLEANING

129 South Governors Avenue

Dover, Delaware
734-8195

Dover Air
Force Base
736-6242

LATION CENTER

ds at Discount Prices

DuPont Highway
at Maple Parkway
Dover, Del.



FORNEY'S JEWELRY STORE

Lenox China . . . Fine Jewelry

13 Lookerman Street

CAPITOL ARENA

The skating rink with Olympic standards

Public Sessions —

Tues. — 8:00-10:30 p.m.

Wed. — 8:00-10:30 p.m.

Fri. — 8:00-11:00 p.m.

Sat. — 8:00-11:00 p.m.

Class and private instruction



Mr. and Mrs. F. G. Hubbard
The Kinane Family
Mr. and Mrs. Thomas J. O'Donnell
Ed and Kathy

Mrs. Elsie Chapman
Mr. and Mrs. William C. Meredith, Jr.
and Steven, Chip and Kelly



THE ART SHOP

oil paintings — local scenes

Yiella Shorts

Little Creek, Del.

Phone: 734-4334

Compliments

of

RUPERT CONSTRUCTION COMPANY

3400 Lancaster Avenue

Wilmington, Delaware

playtex

MANUFACTURERS OF FINE PRODUCTS
FOR THE FAMILY

Playtex Bras & Girdles
Playtex Baby Pants & Bibs
Playtex Nursery Kits
Playtex Toothbrushes
Playtex Shower & Bathing Caps
Playtex Household Gloves
Playtex Tampons

Complete Sarong Line

INTERNATIONAL PLAYTEX CORPORATION
DOVER, DELAWARE

GEORGES BARBER SHOP

Lebanon Road
and
South State Street

Pleasing you pleases us.

LAWTON'S TEXACO SERVICE

Gas
Accessories



Oil
Lubrication

"Road Service"

Rt. 113 & North Little Creek Road

Dover, Del.

Phone 674-9939

MURPHY'S HARDWARE

Old time friendly service courtesy to contractors

Garden supplies
Pratt & Lambert Paints
Electric appliances
Fishing tackle

Phone 736-1884

146 South Governors Ave.

Dover

NATIONAL SHOES

Rodney Village

Shopping Center

674-9686

Mr. and Mrs. Nicholas FisFis
Mr. Tom Shaffer
Tux and Janet
Ginger and Sam

Mrs. Joseph Lomicky
Mr. & Mrs. Horace E. Short
Mr. and Mrs. Braden Shoupe

FIFER'S FRUIT FARMS

Magnolia	284-9200
Rising Sun	697-6847
Wyoming	697-7145
Dover	734-7216

DOVER COCA-COLA BOTTLING COMPANY

Cherry Street

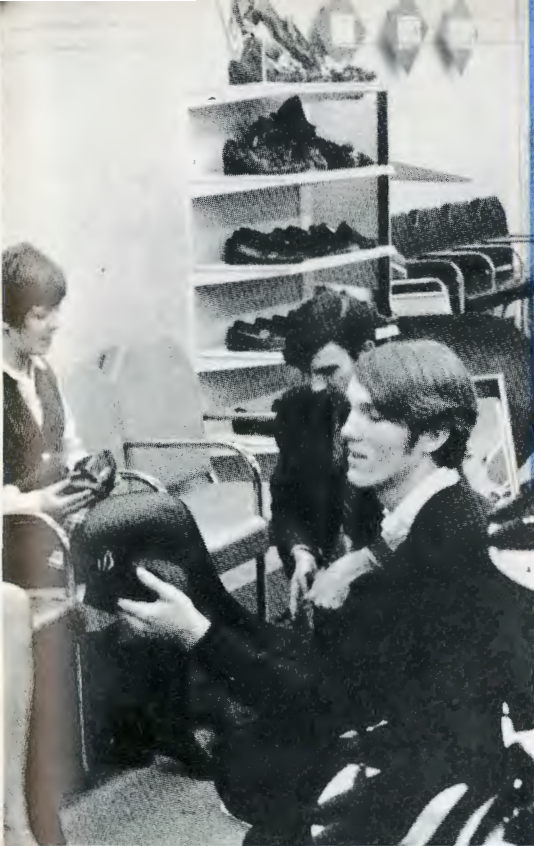
Dover, Delaware

Phone: 734-2651

Mr. and Mrs. C. Wesley Webb
Mr. and Mrs. William T. Webb
Mr. and Mrs. Don DeWitt and family
Miss Marilyn A. Ries
Betty Short
Mr. and Mrs. Harry Newsome
Bill and Margaret Englehart

WAYNE C. BISHOP *Electrical Contractor*
245 Old Mill Road • Dover, Delaware 19901





BUCHANAN SERVICE INC.

Firestone

Complete car service

Philco — Motorola

540 South Governor Avenue

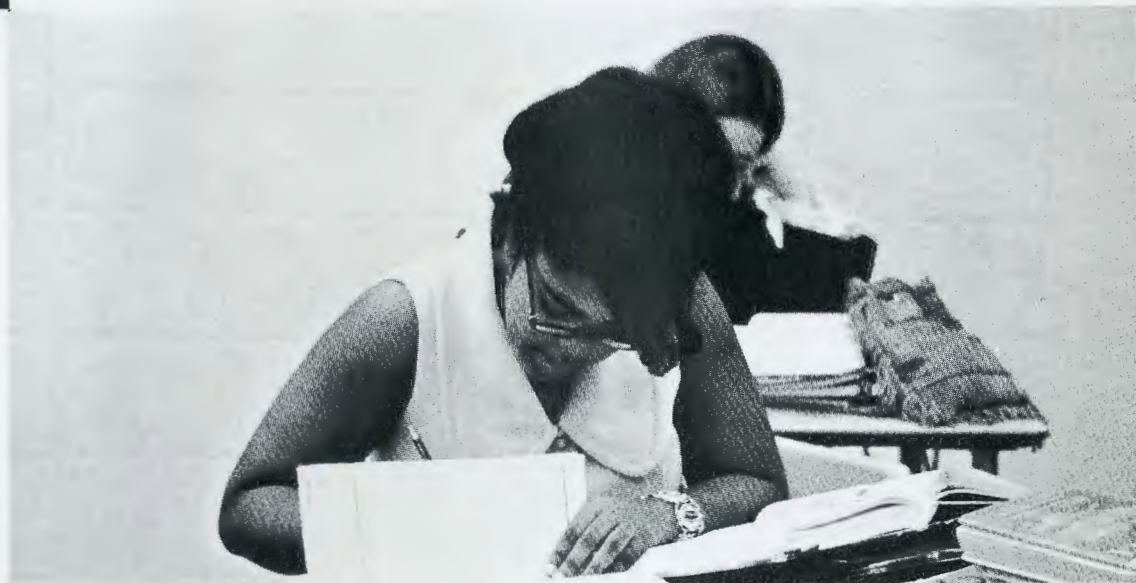
Dover, Delaware

Phone: 734-5941

Compliments of
NCO Wives Club

Officers Wives' Club
Base Commander

"The Thrift Shop"



Compliments
of
SANDERS JEWELRY

Dover, Delaware

Karen Marr
Best Wishes
Mr. and Mrs. H. E. McClary
Mr. and Mrs. Samuel Hughes

Mr. and Mrs. John Knight
Mr. and Mrs. Carl Coon
Mr. and Mrs. Clyde Jensen and Karin
Mr. and Mrs. Walter Fritz

OUTTEN BROS. INC.

Del-Mar-Va's Largest Furniture—Carpeting—Appliance Store

1275 S. Dupont Highway

Dover, Delaware

Phone: 736-1496

Hours: Daily and Saturday 9-6 Thursday and 9-9 Friday

Also Route 13 in Salisbury

and Pocomoke, Md.

SARAH COVENTRY

Kathryn Hutchins

Branch Manager

697-7503

Congratulations and Best Wishes

To

Class of 1970

"Our Leaders Tomorrow"



DOVER FEDERAL CREDIT UNION

Dover Air Force Base

TORRES & SONS INC.

Willow Grove, Delaware

697-7653

DONALD C. APPENZELLER

RD 1 BOX 101 Magnolia, Del.

Potatoes
Peaches
Apples

Phone: 335-5497

Phone: 335-3835

General Contracting & Excavating

Crane & Equipment Rentals

Water – Sewers

MAAG'S
140 Loockerman St.
Phone 736-1727



PETE NIBLETT
MOBILE HOME SALES & SERVICE

We install new gun-type furnaces
for all make mobile homes

U. S. 13 Woodside Crossroads
Open 8-8, 7 days a week
Phone 697-2282

DELAWARE STATE COLLEGE

DuPont Highway

Dover, Delaware

Phone: 734-8271



GREATER DOVER CHA

140 North Dupont Parkway - P.O.

Phone 302

WKEN
Radio 160
Salutes the
1970 Rider Grads

**ARCHIE STUBBS
SINCLAIR SERVICE**

South Governor Ave.
Dover, Delaware

Phone 674-9951

Best Wishes for the Future

**WKEN – C. R. FOOTBALL &
GOOD RADIO AT THE TOP OF YOUR DIAL**

Mr. & Mrs. Samuel B. Walker
Marjorie M. Stiles
Mr. & Mrs. Paul S. Kneeland
Arthur F. Walker, Jr.
Gary Walker
Mr. & Mrs. Thomas B. Sterling
Mr. & Mrs. Robert L. Blunt & Son



Compliments

of

ERDLÉ'S TV & RADIO

DEB – M – NISE

11 Janeka Drive
Camden, Delaware

Phone 697-3757

Marge Kowinsky Everett, Owner



MBER OF COMMERCE

Box 576, Dover, Delaware 19901

734-7513

Compliments
of
DORIS MARKET

AL'S TEXACO SERVICE STATION

Since 1960

Motor Tune Ups

Road Service

Minor Auto Repairs

We give S & H Green Stamps

Rt. 13 & So. Governors Ave.

Dover, Delaware

Adjacent Expressway

Phone 734-5437

WATKINS AUTO SUPPLY, INC.

Wholesale Distributor

Auto Parts

Complete Machine Shop Service
for all makes of cars and trucks

5675 Governors Avenue
Dover, Delaware

674-0211

CONGRATULATIONS TO THE CLASS

OF '70

KEN STOCKSLAGER & SON

Home Improvements

Wyoming, Delaware 697-7291

Kenneth L. Stockslager

C. Richard Stockslager

WILSON COACHES

Travel Trailers

Campers

Tent Trailers

Motor Homes

Tops

Rising Sun, Delaware

Phone 697-7940

S. E. Pratt

BESTLINE DISTRIBUTOR

POWDER PUFF BEAUTY SALON

225 Willow Ave.

Camden, Delaware 19934

Evening Appointments

697-7690

697-6450

HAROLD M. CARTER

Contractor and Builder

697-6144

Dover, Delaware



Compliments

of

DELAWARE TIRE CENTER, INC.



FLEISCHER'S BAKERY

Quality Baked Foods.

149 South Governors Avenue

Dover, Delaware

Phone: 734-9012



LUND TRAILER SALES

M. H. Lund
Owner

J. J. Gehrman
Sales Manager

5 Miles S. of Dover – Rt. 13

Woodside, Delaware

302/697-7341

DAWSON BUS SERVICE

107 East Camden Wyoming Ave.
Camden, Delaware

Phone 697-6342

**TOWNSEND BROTHERS CHEVROLET
INC.**

Sales and Service
Serving Kent County Since 1930

Dover, Delaware

674-0100



Mr. and Mrs. Jim Powell,
Jeb, Jennifer, Elizabeth, and
Smokey

Mr. and Mrs. Jack Lewis
Fease and Bud
Mr. Wayne Silcox
Bob and Linda
Miss Peggy Fiske
Miss P. Warren
Mr. and Mrs. Paul Knight
Mr. and Mrs. Charles Gleadow

MITTEN CONSTRUCTION CO.

Contractors — Builders

COMPLIMENTS

of

STEVENSON'S FUNERAL HOME





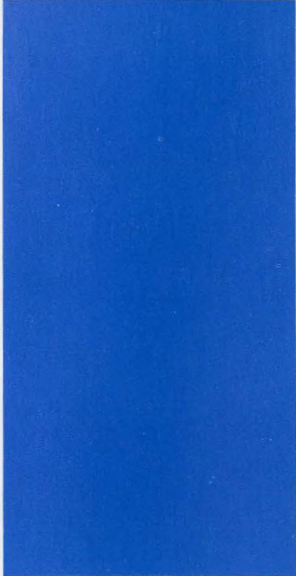
JEN-MOR INC. FLORISTS

and

GREENHOUSES

S. DuPont Hwy.

697-3273



Faye & I
Mr. and Mrs. Clyde Jensen & Karin
Chas. W. Hardesty Agency, Inc.
Best Wishes Mr. and Mrs. H. E. McClary
Mr. and Mrs. Edwin Englehart and Family
Recorder of Deeds Maurice N. Jarrel
Doctor McCoy



W. B. Mitten, Jr.

302/674-0900

P.O. Box 904 • Dover, Delaware 19901

BURKE'S MOTOR SERVICE

125 N. Main Street, Camden

Phone: 697-7980



Compliments of
BIDDLE'S TASTEE-FREEZE
Dover-Hartly Road

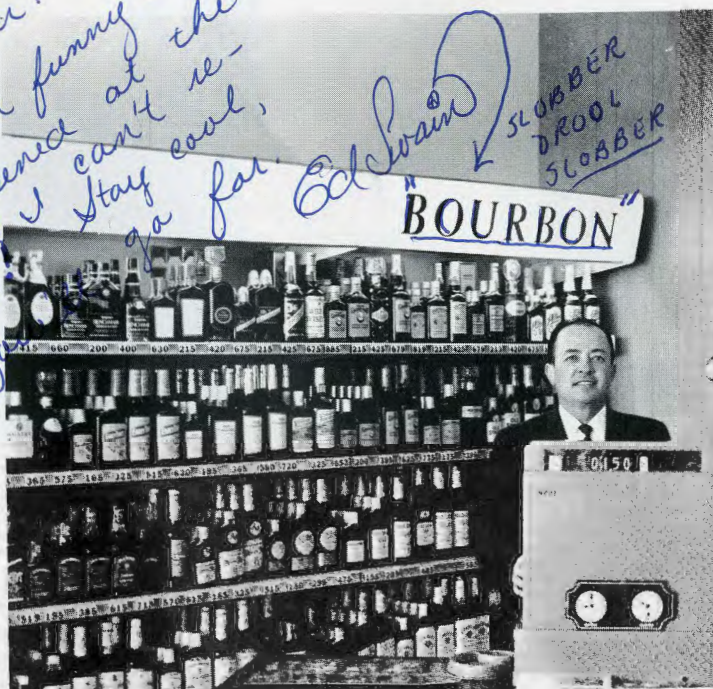
KENSIL RASH AND SONS
Specializing in Hauling Dressed and
Frozen Poultry
Woodside, Delaware
Phone: 697-6531

DELAWARE SHOE REPAIR
150 South Governors Avenue
Dover, Delaware

CARL KING, INC.
Distributor of Atlantic Products
109 South Main Street
Camden, Delaware
Plus S & H Green Stamps

*Gary,
Here I am writing
on our kind of our page.
Remember all our fun
parties or whatever. I
will I ~~will~~ be your
friend I ~~will~~ tell
some of the funny things
that happened at the
party but I can't re-
member and you stay cool,
and you go for*

Compliments
of
DOVER LIQUOR MART
Dover Mart



Compliments
of
BOLAN MOTORS INC.
Ford Sales
&
Service
Dover, Delaware



SHORE SERVICE CENTER

RT. 13 & Maxwell Street
Dover, Delaware 19901
Phone: 674-9560

Foreign Car Service
Quality Texaco Products

Compliments

of

BILL THE BAKER

Specializes in Pizza

Lebanon Road

Dover, Delaware

Phone: 697-2800

CALHOUNS PAINT SUPPLY

401 South Governors Ave.

Phone 734-9666

Dover, Del. 19901

Mr. and Mrs. C. B. Elliott
Mr. and Mrs. A. L. Barrow
and Loretta

THE LEADER

The John Dudley Family
Mr. and Mrs. Richard L. Shorts
Valerie Shorts

JOE'S SUNOCO

N. DuPont Highway
Near Nichols

674-9405

Tune-ups Tire changes

Brake changes

Oil changes

Compliments

of

SAN-DEL PACKING COMPANY

Packers of Pickles & Peppers

Phone 284-4775

Best Wishes

Class of 1970

BOULEVARD ELECTRIC

Sales & Service, Inc.

Mr. and Mrs. Wm. Krupka
Mr. and Mrs. T. H. Evans
Mr. and Mrs. Curley Hutchins
Mr. and Mrs. W. R. Kane
Mr. and Mrs. O. Shoemaker
and John
Mr. and Mrs. Frank C. Cataldi

32 N. Walnut Street

Milford, Del.

LAKELAND FURNITURE MART

SOUTH STATE STREET

DOVER, DELEWARE

PHONE: 697-0180

For Individualism in Fine Furniture

CLYDE A. SIMMONS

738 N. DuPont Highway

Dover, Delaware 19901

Phones: Off. 736-1977
Res. 734-2920

State Farm Insurance Companies

Home Offices: Bloomington, Illinois

Compliments of

ANTHONY'S REST

108 Railroad Ave.

Wyoming, Delaware

697-7448

BEST OF LUCK TO THE CLASS OF "70"

KENT COUNTY BUSINESS MACHINES

739-SOUTH GOVERNORS AVENUE DOVER, DELAWARE 743-8600

A complete line of Business Machines, for the
home, school, and office.

COMPLI

OF

FOKESTER'S AN

COMPLI

OF

HASTINGS

CAPITAL

AND

LAUND

THREE LOCATI

217 SOUTH

140 SOUTH

SOUTH STAT

DOVER,

674-

MENTS

COMPLIMENTS OF

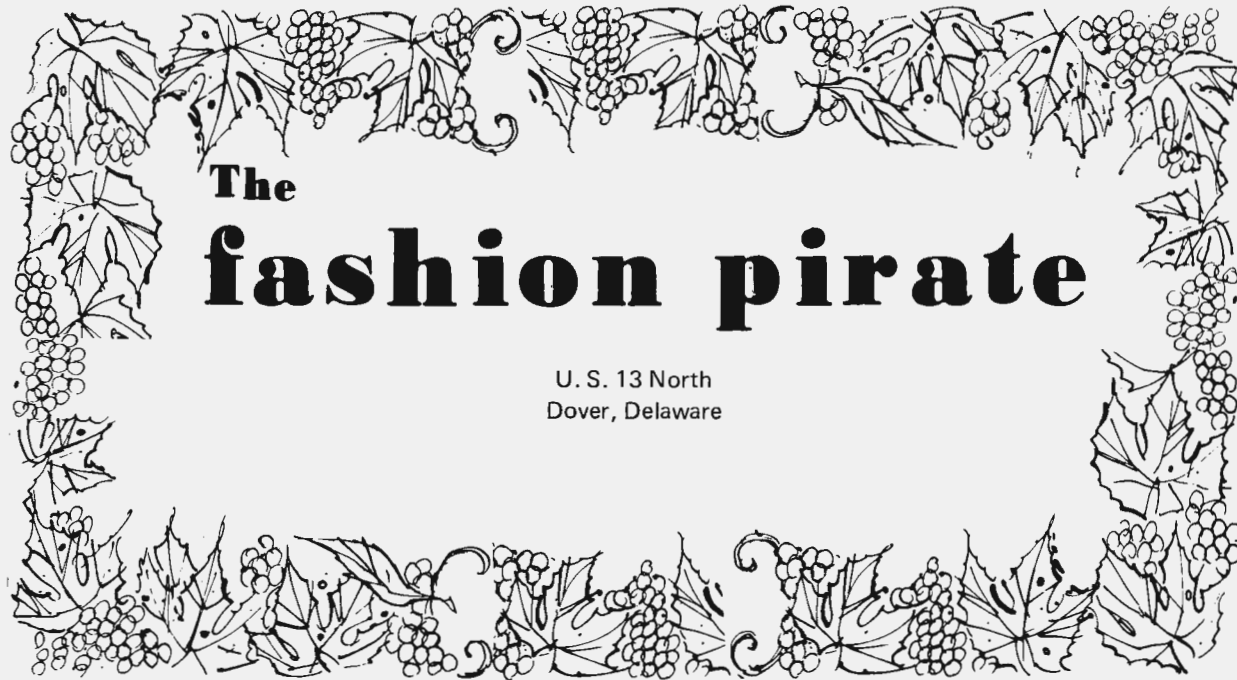
COMPLIMENTS

OF

NADEL'S FURNITURE
CO.

PAPEN FARMS

IMAL HOSPITAL



MENTS

CLEANERS

CLEANERS

BEST WISHES

EIRERS

COMPLIMENTS

FROM

ONS TO SERVE YOU

OF

GARY SCHOMBERT AND

NEW STREET

COX'S MOTOR SHOP

CHUCK POWELL'S

GOVERNORS AVE.

MOBILE HOMES

E STREET

DELAWARE

05:00



Barnard Marine

DuPont Blvd.
Dover, Delaware 19901

Phone 734-5893

HEADQUARTERS FOR BOATS, MOTORS & ACCESSORIES

Compliments

of

DOLPHIN SEAFOODS

Dover, Delaware

BEST WISHES

Class of 1970

BOULEVARD ELECTRIC

Sales and Service, Inc.

122 N. DuPont Parkway

Dover

COOK & SMITH

GREENHOUSE

State & Lotus

Dover

734-3281

Mr. and Mrs. Wm. H. Troemel
Miss J. Holland
Fred and Vicki
Walter Kennett
Eric and Sandy
Pat McLuney
Mr. John A. Carter
Andy and Sandie
Patricia A. Perkiss
Mrs. Esther L. List
R. A. Boaman
Mr. and Mrs. Banks
Mr. and Mrs. S. A. Malie
Mr. and Mrs. David Oldham
Mrs. Daris S. Farr
Mr. and Mrs. Paul Edwards
Elizabeth Lane
Mr. and Mrs. Charles Leasure
KERSHAW HARDWARE
Harry and Ann
Benny and Karen
Lavinia M. Jones



**SIMONS
DEPARTMENT STORE**

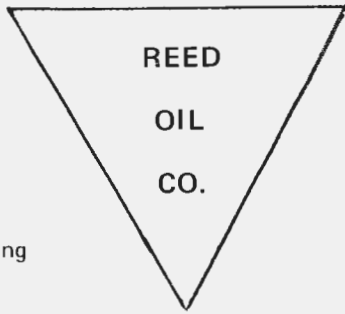
215 Lookerman Street

734-3051

Compliments

of

RICHARD L. SHORT



Heating
Oils

Burner
Service

697-3400

SIMPSON LUMBER COMPANY
Camden, Del.

Lumber
Air Conditioning
Paneling-A-Speciality
S & S Seamless Floors
Building Materials
Warm Air Heating
Colonial Homes & Interior
Special Millwork

697-3281

Compliments

of

FORDS' ATLANTIC

Compliments

of

DANNEMANN'S

Best Wishes from Mrs. Lowe
Capt. & Mrs. Michael Rankin
Mr. & Mrs. Harold K. Carlisle
Miss Janice Miller
Mr. and Mrs. Jack Salmon
Good Luck "70" Mitch
James E. Quirk

Compliments

of

THE PANELRAMA

For all your home Remodeling
needs at Discount Prices

**DAVEY LUMBER
COMPANY**



1502 North DuPont Highway

Dover, Delaware 19901

Dover's "Do It Yourself" Headquarters

Compliments

of

KNIGHTS' MARKET

Camden, Del. 697-3935

ACCORDION INSTRUCTION

MUSIC HOUSE

11 W. Camden-Wyoming Ave.

Wyoming, Del.

697-3954



CAMEO BRIDAL SALON

Complete Bridal Service

714 South Governors Avenue
Dover, Delaware 19901

Phone 678-0155

FLEISCHER'S

Quality Baked

149 S. Governors

Dover,

Phone:

CLYDE A. SIMMONS, Agent

738 N. DuPont Highway
Dover, Delaware 19901

Phones: Off. 736-1977 - Res. 734-2920

STATE FARM

INSURANCE COMPANIES



Home Offices: Bloomington, Illinois



*Gary, Best of luck
to a real Alg.
whis. Take care
of Ralph and
Mik - Have fun
over summer
see ya next year.
As Always.
Bill
1971*

To The Peoples Right To

Today, more and more young people stepping back and taking a long hard at the values . . . the advantages . . . inhe in a career in

JOURNALISM

"The greatest reward is the complete freedom of expression."

"The definite realization of accomplishment."

"Being proud to be a newspaperman, getting and keeping high ideals."

(Quotes from NNA publication)

Compliments

of

H. W. TIEMAN SONS INC.

Delaware State News

BAKERY

Foods

Avenue

Delaware

734-9012

SOUTHERN STATES

Dover

Dover, Delaware



TRADER FUNERAL HOME

12 Lotus Street
Dover, Delaware

Phone
734-4620

Roland P. Trader
Funeral Director

BOULEVARD ELECTRIC

122 N. DuPont Highway

Dover, Delaware 19901

Know ...

are
look
rent

*Gary,
Best
to you in the future.
I hope your senior class
is "Cool" with the guys as well.
also have fun with those
girls. Good Luck
Bill
'73'*

CAPITOL GLASS & MIRROR, INC.

1205 S. DuPont Pkwy.
Dover, Delaware
Phone 674-0160

"Everything in glass and mirrors"

DAVIS & BUTLER

P.O. 702

Dover, Delaware

HAROLD L. BENNETT

130 CAMDEN-WYOMING AVE.
CAMDEN, DELAWARE
REPRESENTING

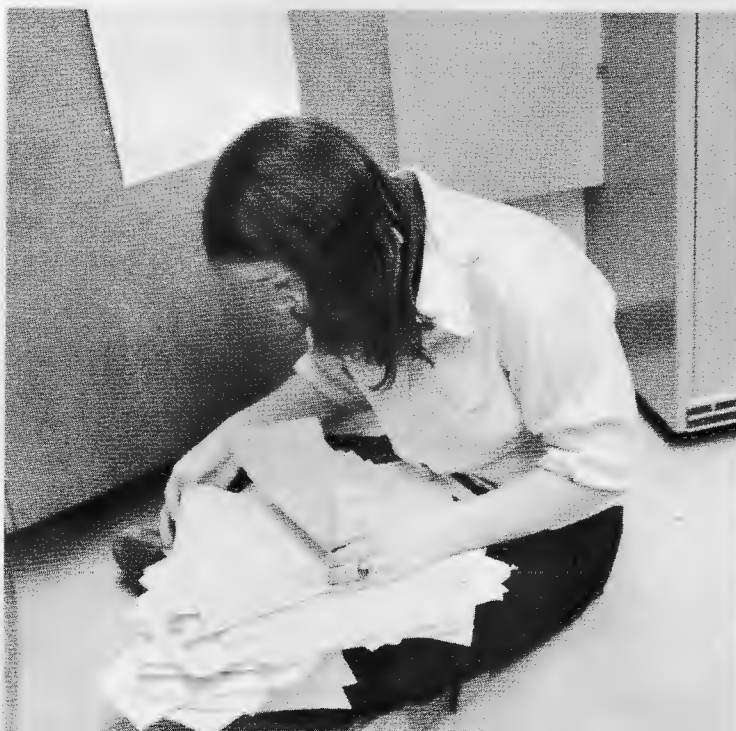
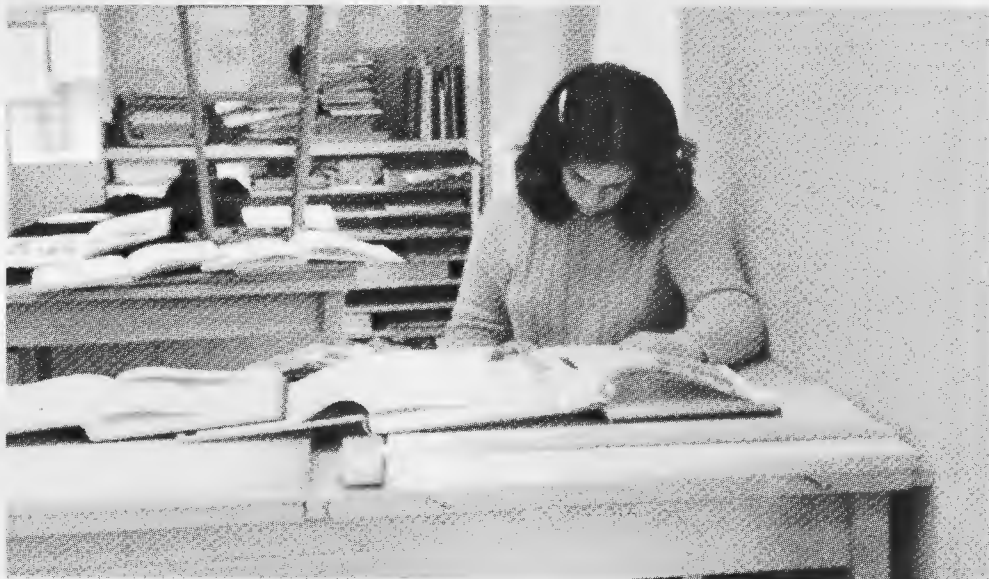
STATE FARM INC.



See For
AUTO
FIRE
LIFE

Phone: 734-8750
697-7250





CRISP

As Caesar Rodney grows, so does the Crisp. Within the Caesar Rodney Interscholastic Press all those memorable moments of high school life are captured. In doing so staff members are offered opportunities in salesmanship, layout work, photography, and copy-editing. Each member puts many hours of hard work into the production of the Annual, so that every student can always look back into their exciting teen-age life and remember themselves as others saw them.





This book is dedicated to the individual student. In its production we have tried to capture the individual in search of himself. I sincerely hope you can remember your moments of surprise, suspense, laughter, and disappointment while looking through the '70 Crisp. Our photographer has tried to capture your moments as others saw them.

I am especially indebted to Linda, Business Manager; Karen, Assistant Business Manager; Betty, Assistant Editor; Sue; Don; Pete; Janet; Rick; Pam; Janet; Steve; Cathleen; and Mike for their many extra hours of hard labor. A special thanks to Bob Montgomery for last minute photos and Mike Kilgore for the cover design. Needless to say, without the kindness to endure and knowledge to guide, this production would have been impossible without our devoted advisor, Mr. James R. Watson. To such a really great person I say "Thank you."

As a great date must come to an end, so must the Crisp. For those leaving, may a part go with you, but for those returning, the whole will remain.

Loretta Tripp

Editor

1970 Crisp

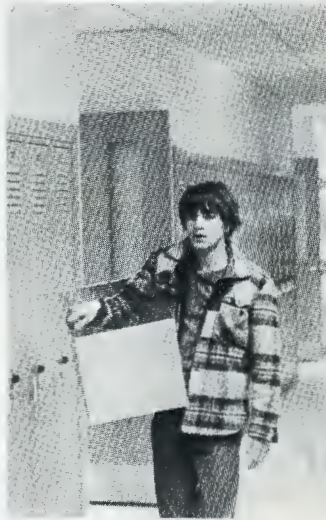
*Gary,
A really nice boy, who knows how to keep a class going. Don't forget the great times in French class; and well Crawford's party. Love luck in every thing, and have fun this summer.
Sincerely,
Jo Ann (Yanni)
PS Maybe I'll see ya in French II next year!!!*

listening ...



The CRISP staff dedicates this yearbook to you the student, whether:

walking ...



practicing ...



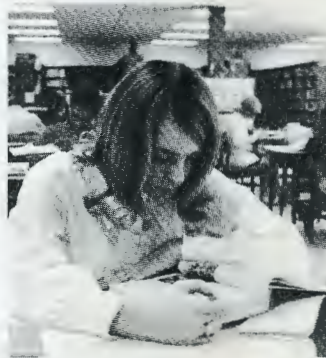
waiting ...



talking ...



reading ...



writing ...

phoning ...



answering ...



typing ...



reporting ...

working ...

