



**A celebration of
things that aren't
there anymore**

SPRING/SUMMER 2024





**A celebration
of things
that aren't
there
anymore**

SPRING/SUMMER 2024

Remember rocking out at the Stone Balloon? Or enjoying a muskrat meal at The Wagon Wheel? Or a shopping spree at Wanamaker's? Revisit times past and some of Delaware's favorite landmarks as you walk down MEMORY LANE.

To help you turn back the hands of time, we've compiled seventy-five digitally-restored vintage photos of Delaware's past - things, places, and events which no longer exist.

Places like Gino's Hamburgers, S & H Green Stamps, Wilmington Dry Goods, and the Dinner Bell Inn may be places you barely remember. This nostalgic look at times gone by will hopefully bring those memories into better focus.

Visit us on Facebook and Instagram to view more MEMORY LANE images. Your first step begins here...at the Delaware Public Archives. Enjoy your stroll.



Front Cover: Corner of Loockerman Street and Governors Avenue, Dover; date unknown
Back Cover: Main Street, Little Creek; 1938



Ronny's Garden World

Ronny's Garden World was one of Delaware's largest garden centers and regional distributor of plants and landscaping products. Founders and Smyrna natives Ronald and Glenda Burris first started selling produce out of a cart at Pine Tree Road before buying land along Route 13 in Smyrna. After a 50-year run, Ronny's Garden World in Smyrna closed doors in 2020. 1969



Clements Supply

W.F. Clements and J.R Clements owned and ran a hardware store in Clayton along Main Street that specialized in mechanical tools and "implements of all kinds". DATE UNKNOWN



Wagon Wheel

The Wagon Wheel Restaurant, a Smyrna landmark famous for its muskrat dinners and for being featured on the TV show "Restaurant Impossible", closed in September 2014 after more than 40 years of serving home-style meals. DATE UNKNOWN



State Theater

Built in 1929, the State Theater was a true Newark landmark. Located near the University of Delaware on Main Street, it was closed near the end of the 1980s, and it was demolished in 1989. Did you see "The Rocky Horror Picture Show" there? 1950



Dover Hardware

Loockerman Street staple Dover Hardware met the needs of Dover do-it-yourselfers and handymen (and handywomen) for decades before closing shop in December 2006. The building was demolished in June 2007. DATE UNKNOWN



Farmers Bank

Farmers Bank of Delaware was the second bank chartered by Delaware. It operated from 1807 until 1981. On December 20, 1981, when the bank was on the verge of bank failure, it was acquired by Girard Bank for \$38.6 million. Girard Bank was acquired by Mellon Bank in 1984 and was sold in 2001 to Citizens Financial Group.

DATE UNKNOWN



Richardson Hotel

The Richardson Hotel was located in Downtown Dover at the intersection of Loockerman and State Streets. The hotel was razed in the 1950s after falling victim to fire and spending its final years in disrepair. 1936



Kirby & Holloway

Established in 1948, Kirby and Holloway Family Restaurant at 656 N. Dupont Highway in Dover was a popular eatery with hearty and inexpensive meals. It was destroyed by a fire in 2014 and demolished in 2015. 1999



S.S. Kresge's 5 and 10

Kresge's 5 and 10 was located on the northwest corner of 8th and Market Streets in Wilmington. S.S. Kresge Co. was incorporated in 1899 and renamed Kmart Corporation in 1977. The first store with the Kmart name opened in 1962 in Garden City, Michigan. DATE UNKNOWN



Sol Kline's Department Store

Businesses along Market Street in Bridgeville including Sol Kline's Department Store, R. Francis Adams Groceries, and Lord's Liquor Store thrived. 1950



Dover Cinema

Built in 1969 inside the Blue Hen Mall by Schwartz Theatres, the Dover Cinema had a giant 60' screen and stadium seating. There were about 200 seats on the main floor and the other 1,000 were all stadium. The theater stopped showing movies in the early-1980s after the Schwartz chain was sold to Fox Theatres of Reading, PA. and was then used sporadically for concerts. 1969



Delmar Drive-In

The Delmar Drive-In opened April 8, 1950 with Robert Young in "Relentless". This single screen drive-in had a capacity for 750 cars. Sad to say that the screen is now completely demolished. DATE UNKNOWN



Wilmington City Railway

By the early 1920s, electric streetcar companies faced increasing competition from automobiles. Buses and trackless trolleys proved more efficient and the Wilmington & Philadelphia Traction Co., which changed its name to the Delaware Electric Power Co. in 1927, began to fade out its trolley systems in favor of gas buses. The company discontinued all of its electric streetcars in 1940. DATE UNKNOWN



Wilmington Dry Goods

Opened in 1924 by J. M. Lazarus at 414 Market Street, the Wilmington Dry Goods policy was to "sell a lot for a little". The Market Street store closed in the mid-1970s followed by the closing suburban stores in the 1980s. DATE UNKNOWN



J. H. Latchum's Confectionery

J. H. Latchum's Confectionery was located north of the creek on the west side of Walnut Street in Milford. Dosey Bowen's Grocery was next door. DATE UNKNOWN



Old Smyrna Diner

Owned and operated by Sandy Margist and her family since 1972, the old Smyrna Diner was located along US 13 in Smyrna from 1956 to 2008. The new Smyrna Diner is located near the Route 1 interchange in southern Smyrna.
DATE UNKNOWN



R.M. Kaufman Drug Store

Dr. R.M. Kaufman served up his No. 2 Cough Syrup inside his drug store along High Street in Seaford. If you're feeling tired and bilious, try some K & M Capsules or some one cent Joy Mint Gum.
DATE UNKNOWN



John Wanamaker

The John Wanamaker department store in Wilmington along the Augustine Cut-Off opened in 1950 and was very popular to Northern Delaware shoppers. Since 2014, it's been the home of Incyte Corp. pharmaceuticals.
DATE UNKNOWN



Robin Hood Theater

The Robin Hood Theater in Ardentown, opened its doors in the 1930s, and operated as a summer stock theater until the mid-1960s. The cozy theater attracted such resident actors as Barbara Bel Geddes, Jack Klugman, and Anthony Perkins. In 1969, it became the Candlelight Music Dinner Theatre, one of the first on the east coast, and today remains a popular theater.
DATE UNKNOWN



MBNA America

In the early 1980s, Maryland banks lobbied for legislation to permit higher interest rates on credit-card charges, but lawmakers refused. Delaware, however, had removed interest-rate restrictions in 1981. When Maryland failed to do the same, MNC Financial moved its credit-card business across the state line. MBNA was founded in 1982 as Maryland Bank, N.A.. Always a sponsor on race weekend at Dover International Speedway throughout the 1990s, pictured here, MBNA merged with Bank of America in 2006. 1997



Oak Orchard Boardwalk

Oak Orchard on Indian River Bay drew huge summertime crowds in the early 20th century as a popular summer resort complete with calm and shallow water beaches and a boardwalk promenade. The town is still there but the boardwalk and attractions have long since disappeared. 1915



Woody's Diner

One of Delaware's treasured landmarks, Woody's Diner, was opened in Selbyville in 1950 by Woody Sturgis, and quickly became a popular eatery frequented by local residents and travelers. In 1983, The Doyle family purchased the diner, renamed it Doyle's Restaurant, and made only a few changes to its 1950's décor. DATE UNKNOWN



F.W. Woolworth

Time caught up with Woolworth department stores in 1997 when it closed its last remaining stores in the U.S. From 1940 to 1997, the F. W. Woolworth Company operated a store at 839 N. Market Street in Wilmington, this location being one of the last to close. The building is now a Walgreens. Woolworth also operated another store, four blocks away at 504 Market Street. This second location now houses the Delaware History Museum. DATE UNKNOWN



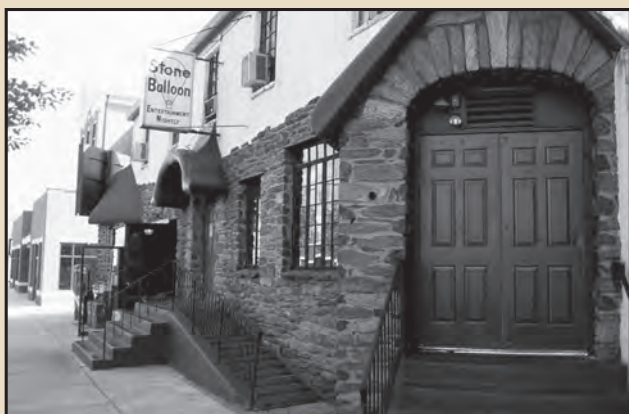
W. T. Mendenhall's Store

Over one hundred years ago, W. T. Mendenhall's Store in Hockessin was your one-stop shop for groceries, provisions, fresh meats, and Escanaba cigars. 1912



Moraine's Restaurant

A landmark restaurant in Harrington, Moraine's was famous for its oysters. 1925



The Stone Balloon

The Stone Balloon Tavern and Concert Hall opened its doors in 1972 and served as Delaware's premier live music venue until closing its doors in 2005. Located on Main Street, the club was an active part of the evening social scene in Delaware hosting such iconic American bands as Bruce Springsteen and the E Street Band, The Dave Matthews Band, and Metallica. In 2014, it reopened as a rock-n-roll themed restaurant but has just recently announced it would not be renewing its lease for 2024. 1998



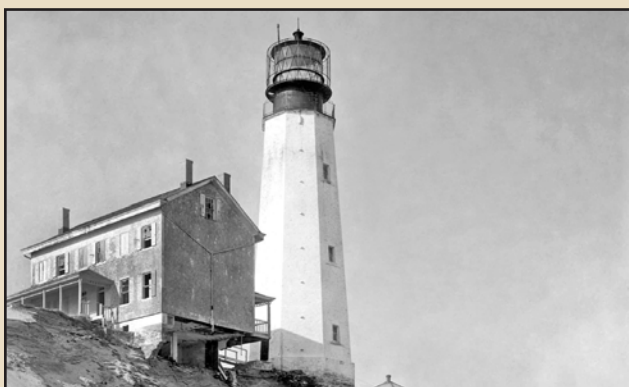
Maag's Sporting Goods

Just about every Kent County kid from the 1950s to the late 1970s bought sports equipment from the mighty Maag's Sporting Goods on Loockerman Street in Dover. DATE UNKNOWN



Gino's Hamburgers

Founded in Baltimore by Baltimore Colts defensive end Gino Marchetti and running back Alan Ameche, the chain had 359 company-owned locations when the Marriott Corporation acquired it in 1982. Marriott discontinued the brand and converted locations to Roy Rogers Restaurants. 1977



Cape Henlopen Light

Built in 1767, the Cape Henlopen Light was located on the north side of the Great Dune in Cape Henlopen State Park. First lit in 1769, the lighthouse was the sixth built in the colonies. By 1897, the sand dune surrounding the tower was blowing away at a rate of three to five feet per year. It was deactivated in 1924 and in April 1926, it collapsed into the Atlantic Ocean. 1926



Leeds Travelwear

Many Smyrna-Clayton residents made a case for working at Leeds Travelwear. The building which was home to the creation of tote bags and luggage is now home to Eagle Group. CIRCA 1960S



Kmart

The first store with the Kmart name opened in 1962. At its peak in 1994, Kmart operated 2,486 stores globally, including 2,323 locations in the United States. Kmart now has 6 locations — three in the US Virgin Islands and one each in Florida, Long Island, and Guam. The Rehoboth Beach Kmart closed in February 2020. It was Delaware's last Kmart. DATE UNKNOWN



Thomas England House

Woodlawn was a historic home located in Smyrna along Rt. 13. It was first known as Morris Rambles when built in 1741. It was most recently known as the Thomas England House Restaurant. Before that, it was run as a candy shop known as Candy Manor. The house was one of only two temple-front, Greek revival pieces of architecture in Delaware. The house was demolished in 2017. DATE UNKNOWN



Original Rehoboth Beach Bandstand

The original Rehoboth Beach Bandstand was first conceptualized by the late Mr. William Hayes in 1963 whose passion for music drove him to persuade the city to establish a music venue in the town. The City of Rehoboth Beach then constructed the well-known bandstand structure that stood for more than 40 years. Today's bandstand was built in 2006. DATE UNKNOWN



Smyrna Times

The first issue of The Smyrna Times appeared on Wednesday, July 5, 1854, with the motto "A Family Paper, Devoted to Temperance, Education, Literature, Agriculture, and General Intelligence." The Smyrna Times continued to publish until 1987, when it merged with the Smyrna Clayton Sun to become the Smyrna Clayton Sun-Times. 1954



Libby's Cottage Restaurant

Libby's Cottage Restaurant, near the intersection of Routes 24 and 1 west of Rehoboth Beach, was a popular eating spot for many years, as was its sister operation, Libby's Restaurant, on the ocean highway in Fenwick Island. DATE UNKNOWN



A&P Supermarkets

The Great Atlantic & Pacific Tea Company, better known as A&P, was founded in 1859 and from 1915 through 1975, it was the largest grocery retailer in the United States (and, until 1965, the largest U.S. retailer of any kind). In 1930, A&P was the world's largest retailer, reaching \$2.9 billion in sales (\$50.8 billion today) with 15,000 stores but after two bankruptcies, A&P finally closed the last of its doors in 2015. 1960



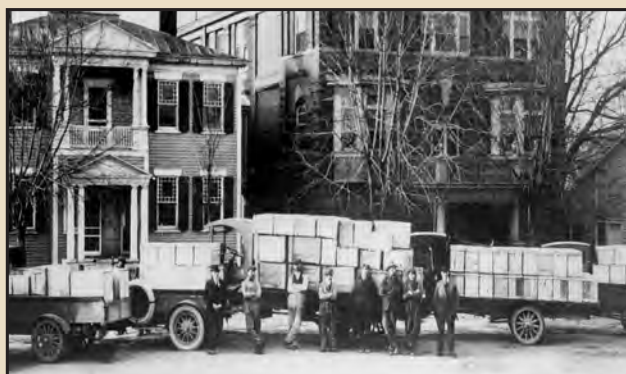
Carter Store

Carter Store in Downs Chapel was one of many general stores in Delaware in the first half of the 20th century. In addition to often being the only provider of "store-bought goods" and the post office, the country store served other roles, including the community's social center, as an "exchange bank," community message center, and political club and forum for men in the community. 1953



Marshall & Chipman Drug and Dept. Store

Marshall & Chipman Drug and Department Store in Georgetown was the place for Eisenlohr's Cigars and Dr. Kilmer's Swamp-Root. Chipman was Dr. James Henry Chipman (1878-1927), a doctor and druggist. DATE UNKNOWN



L.D. Caulk

Milford's flagship company was founded by dentist Dr. Levin D. Caulk, who in 1877, gave up practicing dentistry to devote his efforts to creating dental products in a humble shed behind his home. Dr. Caulk passed away in 1895, and the company is still located in Milford but now as Dentsply Caulk, a division of Dentsply International, the world's largest professional dental products manufacturer, who bought the company in 1963. 1918



Old Dover Library

The old Dover Public Library, located at 45 South State Street, served Dover from 1961 to 2012. In 2012, a newly-built Dover Public Library was opened on Lookerman Street at a cost of \$21,000,000. 1967



Delmarva Chicken Festival

The Delmarva Chicken Festival began in 1948. Organizers boasted “the world’s largest frying pan,” cooking 800 chicken quarters in 150 gallons of oil. The group evolved into Delmarva Poultry Industry Inc. and held the last festival in 2014. The original giant frying pan was donated to Georgetown Historical Society. The festival was revived once in 2023 to celebrate the industry’s start 100 years ago. DATE UNKNOWN



Rosedale Beach Hotel

The Rosedale Beach Hotel and Resort was a destination point for many people of color along the East Coast from the early 1900s to the 1970s. The resort featured a hotel, boardwalk, dance hall, beach area, campground and amusement park. Once Delaware integrated its public facilities, visitation to the resort began to decline. The boardwalk was destroyed by the storm of 1962 and was never replaced and the resort was eventually sold to Gull Point in 1983. DATE UNKNOWN



Howard Johnson's

The former restaurant chain was founded in 1925. In the 1950s, the company expanded operations by opening hotels, which were often located next to restaurants. Throughout the 1960s and 1970s, it was the largest restaurant chain in the U.S., with more than 1,000 combined company-owned and franchised outlets. Failing to update its menu, along with increased competition, sealed the fate of the restaurant chain. The last location closed in 2017 in New York. DATE UNKNOWN



Lord De La Warr Motel

The Lord De La Warr Motel was built in the early 1950s along US 13 just south of Wilmington. At the height of its popularity, it was described as having 200 comfortable rooms, efficiency units and suites. Before its closing in the late 1970's, it was notorious for illicit criminal activity. DATE UNKNOWN



Laughing Gull

The Laughing Gull was one of a number of long-since gone watering holes in Little Creek. DATE UNKNOWN



Apple Blossom Festival

When Delaware's Apple Blossom Festival debuted in 1928, a report said, "the apple orchards were veritable fairylands in their spring gowns of white blossoms." This photo shows Dr. J.A. Long – whose apples were judged the region's best – inspecting his trees. Delaware's top crop was 570 million pounds in 1946, when bushels averaged \$2.15. It's been decades since the festival existed but for the past 30+ years Bridgeville has hosted its annual Apple Scrapple Festival. 1935



Woodland Beach

In the 1880s, Woodland Beach was a popular resort area near Smyrna that included the Woodland Park hotel; a two-story pavilion with live music, a bar, restaurant, glass observatory on top, and games such as billiards, shuffleboards, and archery; a forested park area with tables, chairs, and swings; and facilities for fishing, swimming, and hunting. All of these amenities have long since gone but the beach remains. DATE UNKNOWN



Brandywine Raceway

Brandywine Raceway was the 28th harness racing plant in the nation opening for its first season in 1952-53. In 1960, Brandywine converted its racetrack from a half-mile course to a five-eighth mile oval adding a new clubhouse featuring a window which could become open-air when weather permitted. Brandywine closed after several seasons of steep losing financial setbacks in 1989. DATE UNKNOWN



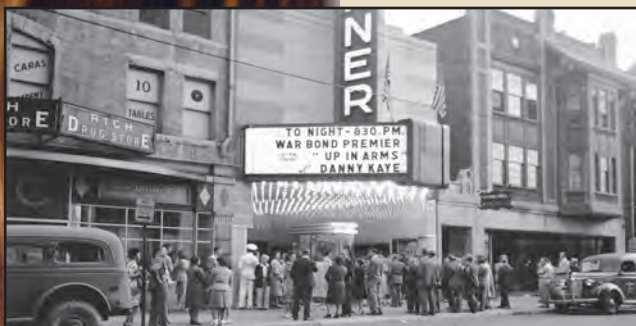
Clemente's Travel Center

This Delaware road stop opened in 1951 located on U.S. Route 13 southwest of New Castle. It billed itself as the place "WHERE THE NATION MEETS AND EATS". It was the major rest stop and transfer point for the interstate bus system. The stop consisted of a cafeteria, gift shop, restrooms, and the ticket counters for the buses. It sadly closed in 1992. 1962



E.B. McCabe General Store

Fresh vegetables, fruits, frozen foods, cigarettes, candies, and ice cream – E.B. McCabe's in Fenwick Island had it all. 1961



Warner Theater

The Warner Theater, located in the heart of Downtown Wilmington, had a historical presence since 1920. Closing in December 1976, the theater was once the largest and most lavish theater in the State of Delaware. Now, it's an apartment building. 1944



R.A. Haggerty General Store and Post Office

The 1940 Census shows a Rose Haggerty living in Little Creek and listed her occupation as "post mistress". In 1940, she was 41 years old and lived in Little Creek, Delaware, with her husband, George, and 2 daughters - perhaps the two young girls in the photo. 1938



Blue Hen Mall

The Blue Hen Mall opened in August 1968 along Bay Road in Dover and was the main shopping hub in the area until the Dover Mall opened in 1982, leading to its decline. The mall has now been converted into a combination of medical care and state office facility. Tenants include Delaware Department of Labor, VA Outpatient Offices, and Bayhealth Medical Center. CIRCA 1960S



Grants

W. T. Grant, or Grants, was a United States-based chain of mass-merchandise stores founded by William Thomas Grant in 1906. By the time Grant died in 1972 at age 96, his chain of W. T. Grant Stores had grown to almost 1,200. W. T. Grant's bankruptcy in 1976, the second largest in US history, was in part due to a failure to adapt to changing times. 1968



Brandywine Springs Park

Brandywine Springs County Park was a popular amusement park in the rural countryside outside Wilmington from approximately 1890 to 1923. DATE UNKNOWN



W.T. Smithers Restaurant

The property at 140 S. State Street in Dover was once known as W.T. Smithers Restaurant and was very popular with rowdy Wesley College students and lunchtime legislators. The property has been restored and has been home to the upscale Grey Fox Grille & Public House since 2015. 1993



Movies 6

Opening in 1981, Movies 6 was Dover's first multi-screen theater offering six films for the audience to choose from. In the early 2000s, its screens went dark and it became an Ollie's Bargain Outlet. 1999



Silco Stores

Downstate readers may recognize Silco Cut Price Stores. Ahead of their time, Silco was the forerunner of today's discount stores and sold just about everything. 1960



Island Field Museum

The cemetery at the Island Field archaeological site near South Bowers was associated with a Native American village dating back to the ninth century and was considered so notable that the state constructed a museum around the remains in 1973 drawing thousands of visitors. However in 1986, members of Delaware's Native American Nanticoke tribe protested the open display of graves in a sacred site and asked that the facility be closed, out of respect to their ancestors. State officials listened and agreed. The museum site is no longer open to the public. DATE UNKNOWN



Dolle's Sign

Dolle's Salt Water Taffy, and its large sign, have been Delaware staples since opening on the Rehoboth Beach boardwalk in 1927. Their lease at 1. Rehoboth Ave. expired January 2022, and owner Tom Ibach moved the candy store to a smaller location right next door but the giant red sign was to go. Ultimately, the sign found a new home at the Rehoboth Beach Museum. DATE UNKNOWN



Wayside Inn

Opened in 1925, The Wayside Inn on Rt. 13 in Smyrna was a local landmark for generations, but the restaurant's long run came to an end in April 2010. DATE UNKNOWN



Normandie Restaurant

The Normandie Restaurant at the corner of Loockerman Street and Governors Avenue in Dover with Maag's Sporting Goods, Sears and J C Penney across the street. DATE UNKNOWN



J.M. Webb's Shop

Wagonbuilder J. M. Webb had a huge shop on N. E. Front Street in Milford in the early 20th century. 1910



Bank of Delaware

The Bank of Delaware, the state's first chartered bank, opened for deposits in 1795. Its prominent Wilmington building at Ninth and Market — dubbed "ultra-modern" inside and out — was built in 1958-60. The Bank of Delaware was acquired and renamed by PNC Financial Corp. in 1989. 1960



Glasgow Arms

Constantine "Gus" Slavos opened the Glasgow Arms in 1937. Later run by his children, the restaurant, once called the area's one true namesake landmark, stayed popular over decades for special-occasion dining. Closed in 1994, it's later replaced by an Arby's. DATE UNKNOWN



Heartbreak Hotel

The Heartbreak Hotel was a true Delaware landmark and how it got renamed are the stuff of legend. Built about 1850, it was originally called Bowers Beach Hotel and Johnson Hotel. But after Elvis Presley's 1956 hit, it's dubbed the Heartbreak Hotel. Some say that's for its rendezvous reputation and others say it's for a bartender who broke a lot of hearts. The late Anna Dean, longtime owner, makes the name official with Heartbreak Hotel on its signs. The building is later sold, closed and razed in 2005. DATE UNKNOWN



Chuck Wagon

The Chuck Wagon opened its doors along Kirkwood Highway in 1956 when developer Ralph Gordy Sr. created this carhop landmark at his namesake plaza off the Kirkwood Highway at Farrand Drive. The place went all-in with its conestoga shape, cowboy-camp coffeepot door, cattle-brand menu and wagon-wheel lights. In 1987 came news of The Chuck Wagon's last roundup. 1966



Pierce Hardware

Pierce Hardware in Milford was on the west side of downtown Walnut Street and in business at that location until 1960. 1929



Young's Studio

After capturing Dover memories for more than 60 years, Young's Studio along Lookerman Street closed its doors for the last time in 2015. Long operated by Ross and Lois Young – and in later years featuring the work of the Youngs' award-winning photographer son Eric – the independent photo studio became an institution in the capital city. 2006



Dinner Bell Inn

Located in Rehoboth Beach on the corner of 2nd & Christian Streets, the Dinner Bell Inn was famous for delicious meals served in a friendly atmosphere. When owner Ruth Cowgill Emmert opened her doors in 1937, she wanted to be able to feed people who couldn't normally afford to go out to eat. By the late 1950s, she was serving 1,000 people a day in the summertime. Emmert retired and sold the restaurant in 1974. DATE UNKNOWN



Blue Coat Inn

The Blue Coat Inn Restaurant in Dover was the scene of many wedding receptions, prom dinners, family celebrations, post-legislative camaraderie and fine dining for special occasions. It was demolished in 2008. DATE UNKNOWN



Hotel Carlton

The former Hotel Carlton in Rehoboth Beach is now home to t-shirt shop The Shirt Factory. 1940



Clarkie's Store

Every Clayton kid had the pleasure of visiting Clarkie's Store along Main Street for some penny candy, baseball cards, bubble gum and chocolate bars. And also to visit with his many pet cats. 1970



Peter Pan Diner

Opened in 1953, the "Home of the B-29 Burger"- the Peter Pan Diner was an iconic eatery located at Du Pont Highway and Basin Road next to the New Castle County Airport. From 1978 to 2018 it was famously known as Arner's Restaurant & Bakery. It is now open as Legend Restaurant & Bakery. CIRCA 1950S



Capitol Theater

Constructed in 1904, the Dover Opera House was home to live theater productions until it was purchased by George Schwartz in 1922. He built a new facade and marquee, expanded the seating to 900, refashioned the interior in Art Deco style, and renamed the building the Capitol Theater. It flourished for decades, not closing until 1982. The theater was renovated and reopened in 2001 and renamed the Schwartz Center. 1946





121 Martin Luther King Jr. Blvd. North, Dover, Delaware 19901

302-744-5000

www.Archives.Delaware.gov

